

SPECIFICATIONS

Rating: 50 μ A 3V DC to 10mA 5V DC max.
Contact Resistance: 500m max.
Insulation Resistance: 100M min.
Dielectric Withstanding Voltage: 100V AC for 1 Minute
Bounce: on Bounce 10ms max. off Bounce 10ms max

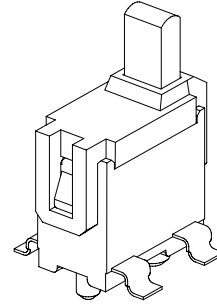
Detector Switch
1BD002 Series
SMT Type H=8.5mm
Asymmetric Post

Mechanical

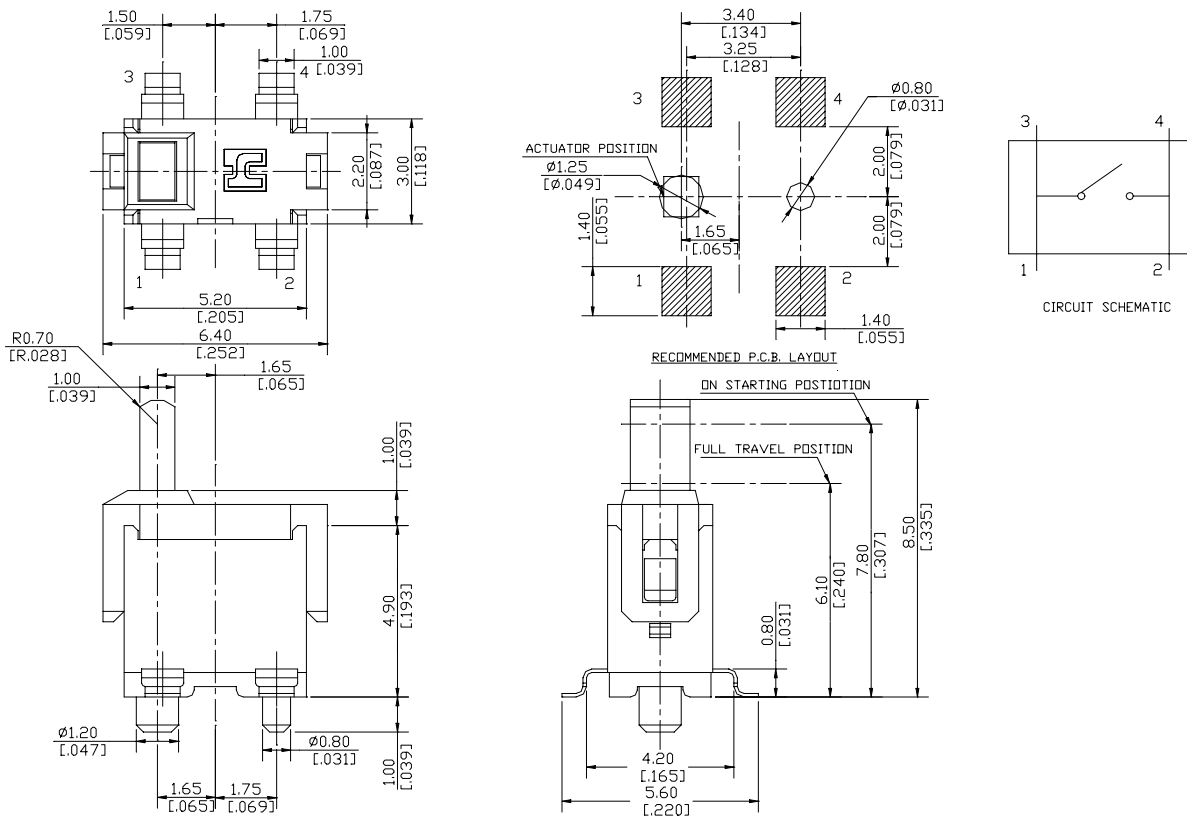
Operating Force & Durability: 35gf max ,50000 Cycles
On-off position : 7.80 \pm 0.30mm

Physical

Operating Temperatures: -10 to +70



DRAWING



ORDERING

PRODUCT NO.: 1BD002-***-***

- | | | | | |
|---------------------|--------|-----|-----|---------------------|
| Switch | 1BD002 | *** | *** | Modification Code |
| Detector Switch | | | | None=w/o ground |
| Product Series | | | | 003=asymmetric post |
| 002=The Second Type | | | | Plating |
| Pole Number | | | | 0=Standard |
| 1=1 | | | | L=Lead free |
| 2=2 | | | | Terminal |
| S=Special | | | | 1= SMT |
| Throw Number | | | | 3= T/H, R/A |
| 1=1 | | | | Total High |
| 2=2 | | | | 0=8.50 mm |
| | | | | 1=9.30 mm |
| | | | | 2=10.7 mm |
| | | | | 3=11.2 mm |