

IP67 COMBINATION D-SUB

Solder pin – Straight – Precision machined contacts

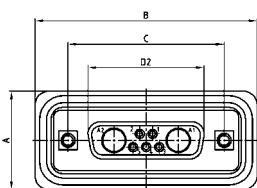


RoHS compliant – CSA listed, File No.: LR 115000-1 – UL listed, File No.: E202784

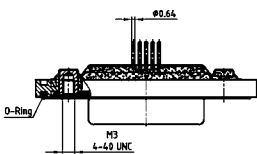
DESCRIPTION

- Contacts: high power or coaxial contacts
- Mounting style: with 4-40 UNC or M3 threaded insert
- Quality class 3 (also available in quality class 1)
- Shell: Brass tin plated (Stainless steel on request)
- Nickel plated die-cast frame (Black plastic frame on request)
- Suitable hex bolts are supplied loose

SOCKET CONNECTOR



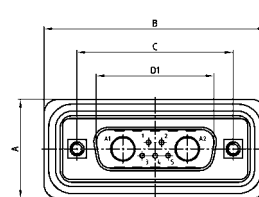
Shell size	A +0.2	B +0.2	C	D2 +0.25
1	21.10	39.40	25.00 ^{+0.12/-0.13}	16.46
2	21.10	47.70	33.30 ^{+0.15/-0.10}	24.79
3	21.10	61.40	47.04 ^{+0.13}	38.50
4	21.10	77.90	63.50 ^{+0.13}	54.96
5	23.90	75.50	61.10 ^{+0.14/-0.11}	52.55



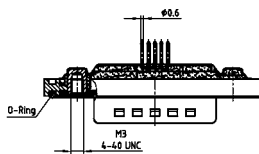
Shell size 1-4

Shell size 5

PLUG CONNECTOR

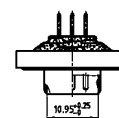
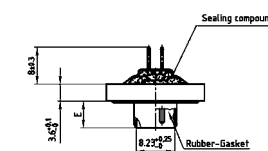
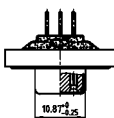
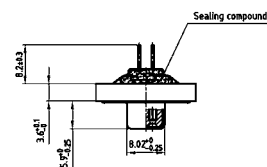


Shell size	A +0.2	B +0.2	C	D1 +0.25	E -0.30
1	21.10	39.40	25.00 ^{+0.12/-0.13}	16.79	5.82
2	21.10	47.70	33.30 ^{+0.15/-0.10}	25.12	5.82
3	21.10	61.40	47.04 ^{+0.13}	38.84	5.69
4	21.10	77.90	63.50 ^{+0.13}	55.30	5.69
5	23.90	75.50	61.10 ^{+0.14/-0.11}	52.68	5.69



Shell size 1-4

Shell size 5



ORDER DATA

SOCKET CONNECTOR		High power contact	Part Number
5W1	Threaded insert	20 A	6 005W1SAR68 B30 X
7W2	Threaded insert	20 A	6 007W2SAR68 B30 X
11W1	Threaded insert	20 A	6 011W1SAR 68 B30 X
9W4	Threaded insert	20 A	6 009W4SAR68 B30 X
13W3	Threaded insert	20 A	6 013W3SAR 68 B30 X
17W2	Threaded insert	20 A	6 017W2SAR 68 B30 X
21W1	Threaded insert	20 A	6 021W1SAR 68 B30 X
13W6	Threaded insert	20 A	6 013W6SAR 68 B30 X
17W5	Threaded insert	20 A	6 017W5SAR 68 B30 X
21WA4	Threaded insert	20 A	6 21WA4SAR 68 B30 X
25W3	Threaded insert	20 A	6 025W3SAR68 B30 X
27W2	Threaded insert	20 A	6 027W2SAR68 B30 X
24W7	Threaded insert	20 A	6 024W7SAR68 B30 X
36W4	Threaded insert	20 A	6 036W4SAR68 B30 X
43W2	Threaded insert	20 A	6 043W2SAR68 B30 X
47W1	Threaded insert	20 A	6 047W1SAR68 B30 X

PLUG CONNECTOR		High power contact	Part Number
5W1	Threaded insert	20 A	6 005W1PAR68 B30 X
7W2	Threaded insert	20 A	6 007W2PAR68 B30 X
11W1	Threaded insert	20 A	6 011W1PAR 68 B30 X
9W4	Threaded insert	20 A	6 009W4PAR68 B30 X
13W3	Threaded insert	20 A	6 013W3PAR68 B30 X
17W2	Threaded insert	20 A	6 017W2PAR68 B30 X
21W1	Threaded insert	20 A	6 021W1PAR68 B30 X
13W6	Threaded insert	20 A	6 013W6PAR 68 B30 X
17W5	Threaded insert	20 A	6 017W5PAR68 B30 X
21WA4	Threaded insert	20 A	6 21WA4PAR68 B30 X
25W3	Threaded insert	20 A	6 025W3PAR68 B30 X
27W2	Threaded insert	20 A	6 027W2PAR68 B30 X
24W7	Threaded insert	20 A	6 024W7PAR68 B30 X
36W4	Threaded insert	20 A	6 036W4PAR68 B30 X
43W2	Threaded insert	20 A	6 043W2PAR68 B30 X
47W1	Threaded insert	20 A	6 047W1PAR68 B30 X

For other contact configurations refer to part number creator.

Contact	Code
High power 20 A; D=.080/1.95 mm =	68
High power 20 A; D=.102/2.60 mm =	69
High power 20 A; D=.110/2.85 mm =	70
High power 30 A; D=.130/3.18 mm =	71
High power 40 A; D=.150/3.75 mm =	72