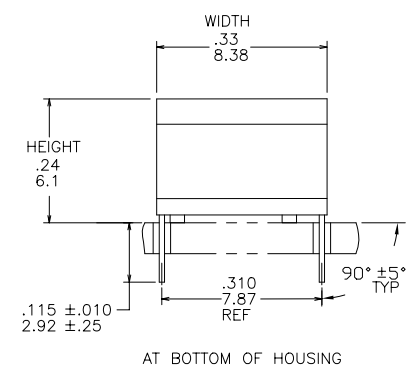
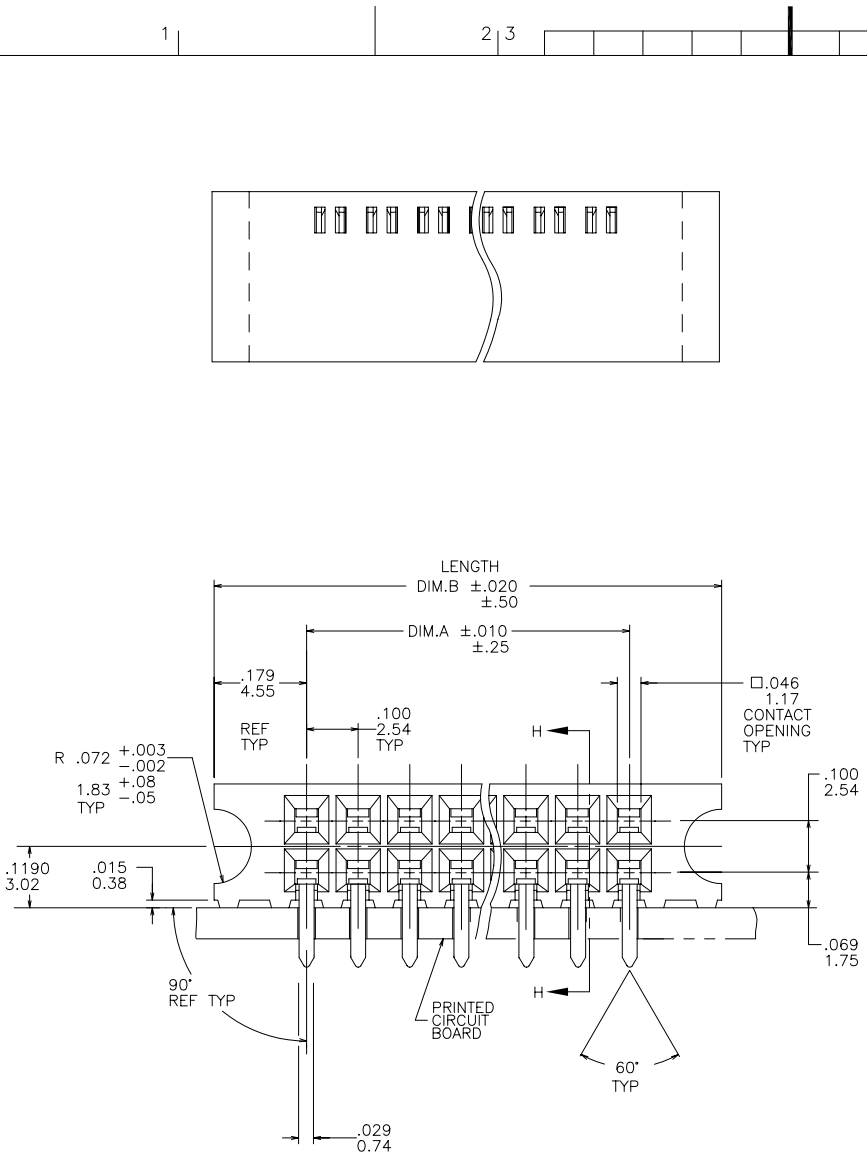




Copyright FCJ

D

form: A3



mat'l. code		surface		tolerance		projection		product family	
-		ISO 1302 <input checked="" type="checkbox"/>		ISO 406				CARD CONN	
				ISO 1101					
ltr		ecn no		date		tolerances unless otherwise specified		title	
A	v94409	MDF	12/8/99	angles		.xx ± 0.1 /.3		GUIDE PIN HCC	
B	v02523	AZ	10/20/00	linear		.xxx ± 0.05 /.13		W/ FIXED LEG	
C	M05-0181	MHT	8/12/05	0° $\pm 2^\circ$.xxxx ± 0.020 /.051		scale 4:1	
D	M06-0117	AEA	06/26/06	dr		M. FETROW 12/8/99		dwg no	
				enr		H. SUNDY 12/8/99		sheet 1 of 4 size	
				chr		H. SUNDY 12/8/99		60029 A3	
				appd		H. SUNDY 12/8/99		type Product Customer Drawing	
sheet index	revision sheet	D	D	D	D	D	D		
		1	2	3	4				

PRODUCT NO
SEE TABLE

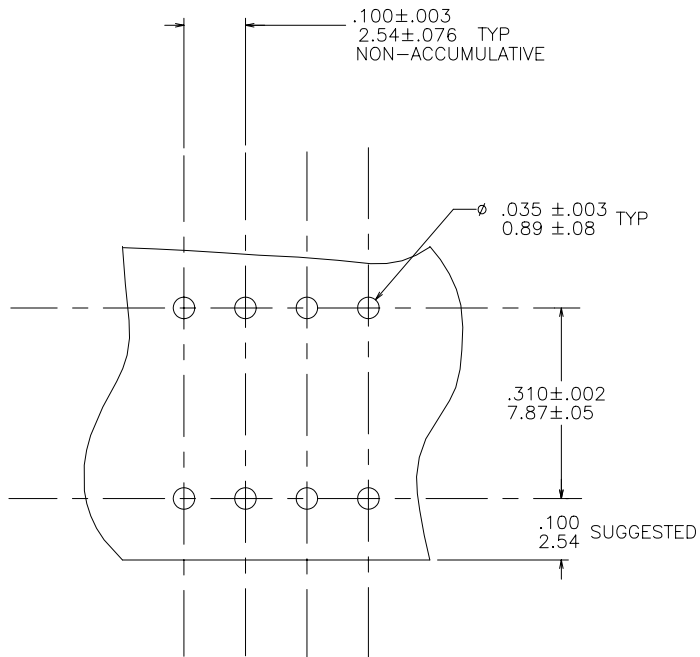


FIGURE 1

NOTES:

1. HOUSING MATERIAL:
FILLED HIGH TEMPERATURE NYLON.
PER UL 94V-0
COLOR: BLACK
2. TERMINAL MATERIAL:
BODY: BRASS. .010/.25 THICK
SPRING: BE-CU. HEAT TREATED
BODY PLATING:
30 MICROINCH/0.76 MICRON GOLD
OVER 50 MICROINCH/1.27 MICRON NICKEL
IN CONTACT AREA
SPRING PLATING: GOLD FLASH
LF BODY PLATING:
100 μ "/2.54 μ Sn OVER 50 μ "/1.27 μ Ni. (NOTE 12)
3. MARK "FCI", PART NUMBER AND DATE CODE.
LEGIBLE ON TUBE LABEL
4. APPLICATION INFORMATION:
A. RECOMMENDED MOUNTING HOLE
PATTERN IS SHOWN IN FIGURE "1"
B. ALL MATING PINS TO BE .025/.64 SQUARE ON
TRUE CENTER OF GIVEN TERMINAL
SPACINGS WITHIN .015/.38 DIA.
C. SUGGESTED MATING PIN LENGTH
.350 \pm .020/8.89 \pm 0.51
5. ADD SUFFIX "P" TO DASH NUMBERS AS FOURTH DIGIT FOR
TAPE AND REEL PACKAGING.
6. TAPE AND REEL PACKAGING PER GES-14-334.
7. TAPE AND REEL PACKAGING FOR 24mm AND SMALLER HAVE
PILOT HOLES ON ONE SIDE OF TAPE ONLY. SIZES ABOVE 24mm
HAVE PILOT HOLES ON BOTH SIDES OF TAPE.
8. TAPE AND REEL PACKAGING FOR 2.835/72mm WIDTH HAVE
A POCKET PITCH OF .787/20mm.
9. ADD "LF" SUFFIX AT THE END OF PART NUMBER FOR LEAD
FREE OPTION.
10. THESE PRODUCT MEETS EUROPEAN UNION DIRECTIVES AND OTHER
COUNTRY REGULATIONS AS DESCRIBED IN GS-22-008
11. THIS PART WILL WITHSTAND EXPOSURE TO 260°C PEAK TEMPERATURE
FOR 20 SECONDS IN A WAVE SOLDER, INFRA-RED OR VAPOR PHASE
SOLDER PROCESS.
12. THIS PRODUCT HAS 100% TIN PLATING IN THE INTERFACE AND
HAS NOT BEEN TESTED FOR WISKER GROWTH IN ALL INTERCONNECT
REQUIREMENTS

FCI
FCIconnect.com

Copyright FCI

mat'l. code		surface		tolerance		projection		product family	
-		ISO 1302 <input checked="" type="checkbox"/>		ISO 406				CARD CONN	
				ISO 1101				title	
ltr		ecn no dr		date		tolerances unless otherwise specified		INCH/MM	
D						.xx \pm .01/.3		GUIDE PIN HCC	
						.xxx \pm .005/.13		W/ FIXED LEG	
						.xxx \pm .0020/.051		scale 4:1	
						0'±2'		dwg no	
				dr		M. FETROW 12/8/99		sheet 2 of 4 size	
				enr		H. SUNDY 12/8/99		60029	
				chr		H. SUNDY 12/8/99		A3	
				appd		H. SUNDY 12/8/99		type	
								Product Customer Drawing	
sheet index		revision sheet							

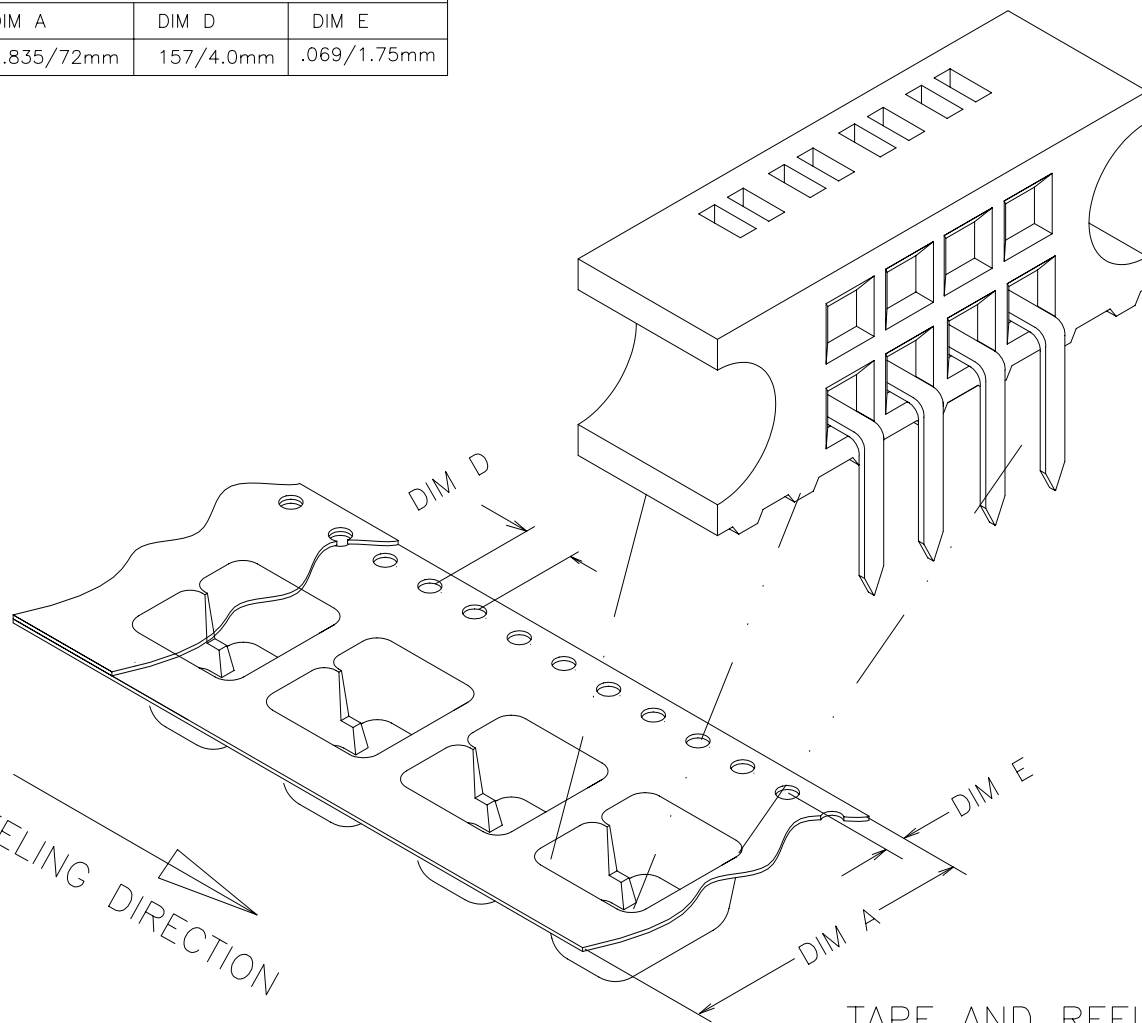
PRODUCT NUMBER	NO. OF POS.	A DIM	B DIM	LEAD FREE OPTION
60029-001 THRU 60029-065				NOTE 9,10
60029-501		UNAVAILABLE		
-502	2X2	.100/2.54	.458/11.63	OBS.
-503	2X3	.200/5.08	.558/14.17	OBS.
-504	2X4	.300/7.62	.658/16.71	OBS.
-505	2X5	.400/10.16	.758/19.25	
-506	2X6	.500/12.70	.858/21.79	
-507	2X7	.600/15.24	.958/24.33	
-508	2X8	.700/17.78	1.058/26.87	
-509	2X9	.800/20.32	1.158/29.41	
-510	2X10	.900/22.86	1.258/31.95	
-511	2X11	1.000/25.4	1.358/34.49	
-512	2X12	1.100/27.94	1.458/37.03	
-513	2X13	1.200/30.48	1.558/39.57	
-514	2X14	1.300/33.02	1.658/42.11	
-515	2X15	1.400/35.56	1.758/44.65	
-516	2X16	1.500/38.10	1.858/47.19	
-517	2X17	1.600/40.64	1.958/49.73	
-518	2X18	1.700/43.18	2.058/52.27	
-519	2X19	1.800/45.72	2.158/54.81	
-520	2X20	1.900/48.26	2.258/57.35	
-521	2X21	2.000/50.80	2.358/59.89	
-522	2X22	2.100/53.34	2.458/62.43	
-523	2X23	2.200/55.88	2.558/64.97	
-524	2X24	2.300/58.42	2.658/67.51	
-525	2X25	2.400/60.96	2.758/70.05	
-526	2X26	2.500/63.50	2.858/72.59	
-527	2X27	2.600/66.04	2.958/75.13	
-528	2X28	2.700/68.58	3.058/77.67	
-529	2X29	2.800/71.12	3.158/80.21	
-530	2X30	2.900/73.66	3.258/82.75	
-531	2X31	3.000/76.20	3.358/85.29	
-532	2X32	3.100/78.74	3.458/87.83	
-533	2X33	3.200/81.28	3.558/90.37	
-534	2X34	3.300/83.82	3.658/92.91	
-535	2X35	3.400/86.36	3.758/95.45	
-536	2X36	3.500/88.90	3.858/97.99	
-537	2X37	3.600/91.44	3.958/100.53	
-538	2X38	3.700/93.98	4.058/103.07	
-539	2X39	3.800/96.52	4.158/105.61	
60029-540	2X40	3.900/99.60	4.258/108.15	NOTE 9,10

PRODUCT NUMBER	NO. OF POS.	A DIM	B DIM	LEAD FREE OPTION
60029-541	2X41	4.000/101.60	4.358/110.69	NOTE 9,10
-542	2X42	4.100/104.14	4.458/113.23	
-543	2X43	4.200/106.68	4.558/115.77	
-544	2X44	4.300/109.22	4.658/118.31	
-545	2X45	4.400/111.76	4.758/120.85	
-546	2X46	4.500/114.30	4.858/123.39	
-547	2X47	4.600/116.84	4.958/125.93	
-548	2X48	4.700/119.38	5.058/128.47	
-549	2X49	4.800/121.92	5.158/131.01	
-550	2X50	4.900/124.46	5.258/133.55	
-551	2X51	5.000/127.00	5.358/136.09	
-552	2X52	5.100/129.54	5.458/138.63	
-553	2X53	5.200/132.08	5.558/141.17	
-554	2X54	5.300/134.62	5.658/143.71	
-555	2X55	5.400/137.16	5.758/146.25	
-556	2X56	5.500/139.70	5.858/148.79	
-557	2X57	5.600/142.24	5.958/151.33	
-558	2X58	5.700/144.78	6.058/153.87	
-559	2X59	5.800/147.32	6.158/156.41	
-560	2X60	5.900/149.86	6.258/158.95	
-561	2X61	6.000/152.40	6.358/161.49	
-562	2X62	6.100/154.94	6.458/164.03	
-563	2X63	6.200/157.48	6.558/166.57	
-564	2X64	6.300/160.02	6.658/169.11	
60029-565	2X65	6.400/162.56	6.758/171.65	
60029-518P	2X18	1.700/43.18	2.058/52.27	NOTE 9,10

Copyright FCI
 FCIconnect.com

mat'l. code		surface		tolerance		projection		product family	
-		ISO 1302 ✓		ISO 406 ISO 1101		⊕		CARD CONN	
ltr		ecn		no		dr		date	
D								title	
								GUIDE PIN HCC W/ FIXED LEG	
								INCH/MM	
								scale 4:1	
								sheet 3 of 4 size	
								60029 A3	
								type Product Customer Drawing	
sheet index		revision sheet							

PRODUCT NO.	TAPE DIM TABLE		
	DIM A	DIM D	DIM E
SEE TABLE	2.835/72mm	157/4.0mm	.069/1.75mm



TAPE AND REEL PACKAGING

mat'l. code		surface		tolerance		projection		product family	
-		ISO 1302		ISO 406		ISO 1101		CARD CONN	
ltr		ecn		no		dr		date	
D									
				tolerances unless otherwise specified		INCH/MM		title	
				.xx±.01/.3				GUIDE PIN HCC	
				.xxx ±.005/.13				W/ FIXED LEG	
				.xxx ±.0020/.051		scale 4:1		dwg no	
				0°±2'				sheet 4 of 4 size	
		dr		M. FETROW		12/8/99		60029	
		enr		H. SUNDY		12/8/99		A3	
		chr		H. SUNDY		12/8/99			
		appd		H. SUNDY		12/8/99		type	
								Product Customer Drawing	
sheet index		revision sheet							



Copyright FCJ