

1

2

3

4

A

B

C

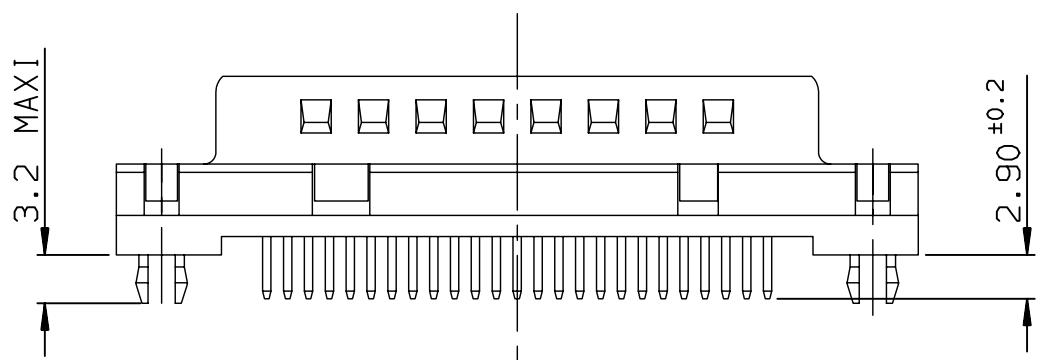
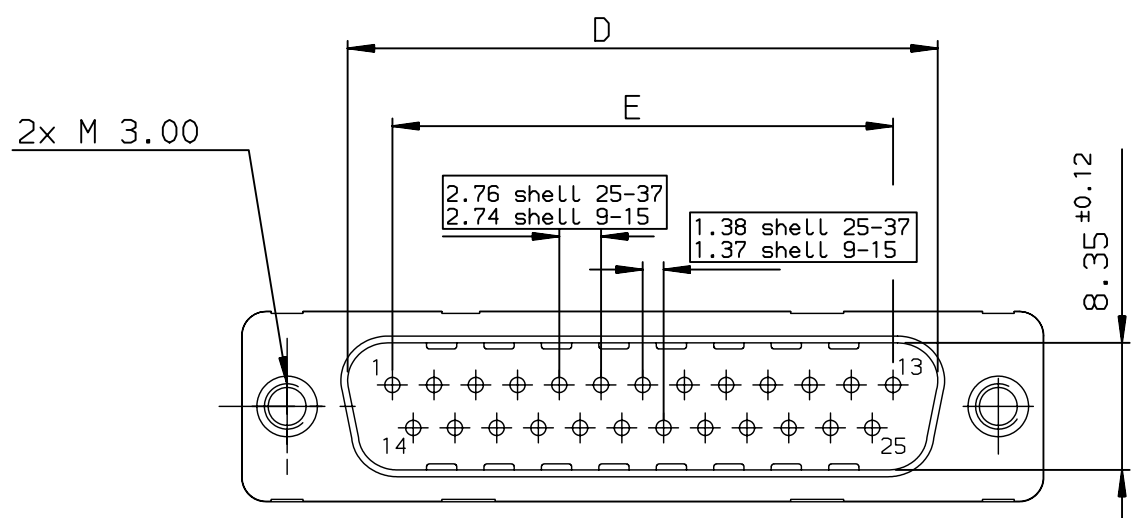
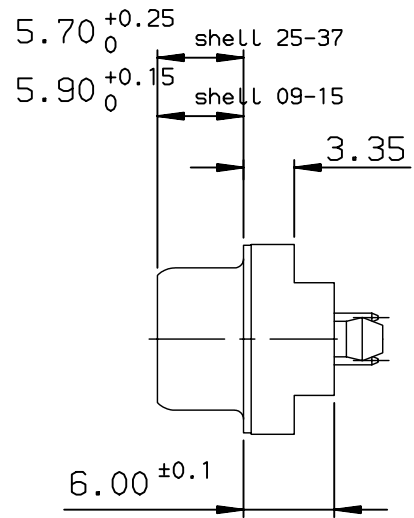
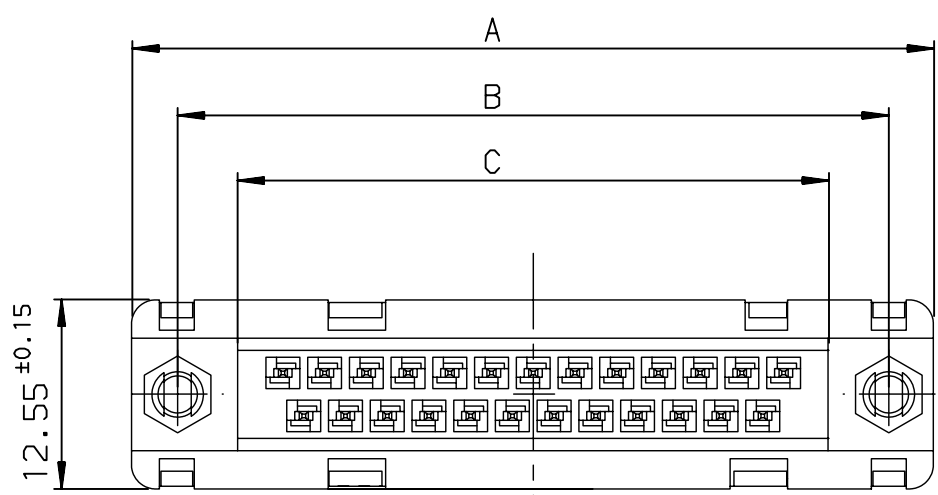
D

A

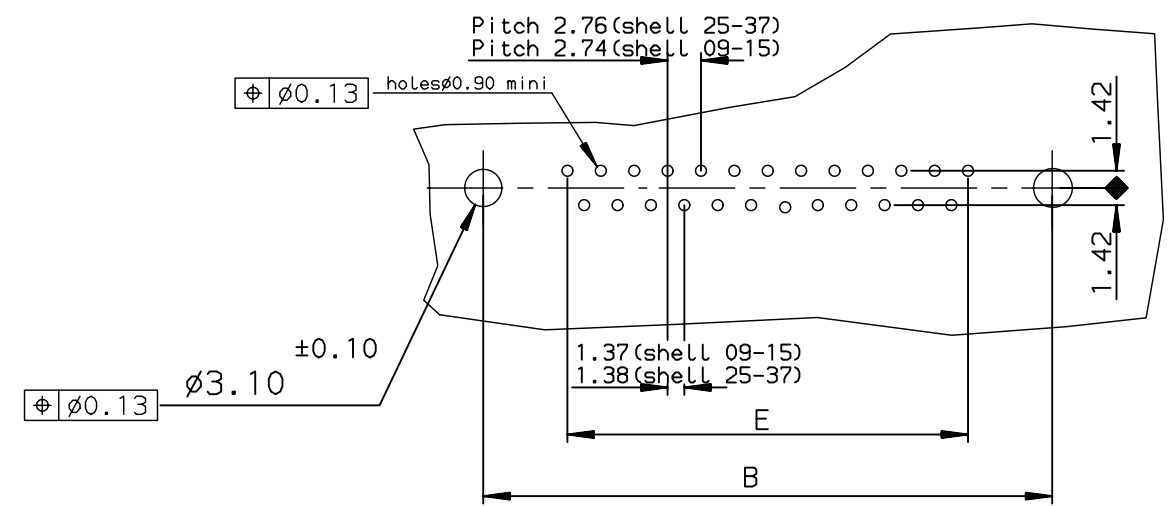
B

C

D



PC card drilling dimensions (after plating)
(thickness 2.40 ± 0.20mm)



SHELL	A±0.38	B±0.12	C±0.10	D±0.25	E±0.07	PART NUMBER
09	30.81	24.99	16.96	16.79	10.96	D09P24A*GL09
15	39.14	33.32	25.18	25.12	19.18	--
25	53.03	47.04	39.12	38.84	33.12	--
37	69.32	63.50	55.68	55.30	49.68	D37P24A*GL09

REQUIREMENTS

Technical characteristics:

- Shell: steel tin plated
- Insulators: self-extinguishing thermoplastic, UL class 94V0
IR or reflow process compatible
- Contacts size 20: phosphor bronze, gold on mating end, bright tin on termination end over nickel on entire contact
- Cycles: >500 for protection 6
>200 for protection 4

Accessories:

- Nuts screw lock: M3.00 with harpoon, tin plated
- retention against torque 0.70N.m minimum

Electrical characteristics:

- max. current rating: 5A
- Test voltage: 1000V
- Rated voltage: 300V
- Contact resistance: ≤10mΩ
- Shell resistance: ≤5mΩ
- Insulation resistance: ≥5000MΩ

Climatic characteristics:

- Operating temperature range: -55°C +125°C

Dimensions:

in accordance with MIL-C-24308C and DIN41652

Plating: 4 -> flash AU
6 -> 0.76µ AU

Connector size 25 drawn
Connectors are packaged in trays : see C01-8646-0519

European Views

www.fciconnect.com		surface ISO 1302 ✓	tolerance std ISO 406 ISO 1101	projection mm
TOLERANCES UNLESS OTHERWISE SPECIFIED				size A3
Dr	M LENOIR	1999/01/20	ANGULAR	
Eng	M LENOIR	1999/01/20	LINEAR	ECN LS06-0208
Chr	M PESSON	1999/01/20	0.XX' ±2'	
Appr	M PESSON	1999/01/20	Product family	Spec ref -
FCi		title MALE CONNECTOR Standard EUROPE		Rev. H
catalog no		dwg no C01-8646-0636		sheet 1 of 1

rev	ecn no	dr	date
G	-	MLE	2000/04/21
H	LS06-0208	LGO	2006/12/12
-	-	-	-
-	-	-	-
-	-	-	-
-	-	-	-

1

2

3

4



Copyright FCI.