

T-47-13

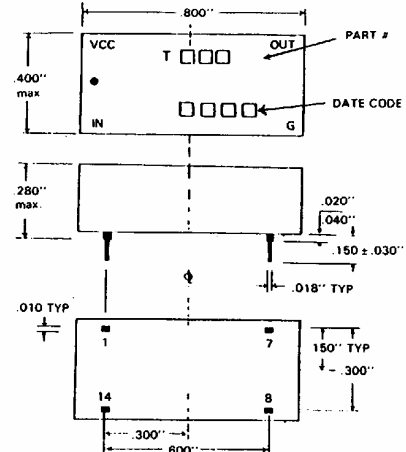
**SPECIFICATIONS:**

- Operating temperature range 0°C to +70°C (-55°C to +125°C on request).
- Supply voltage: 5.0 ± 0.25VDC.
- Supply Current: ICCH 30mA max. ICCL 60mA max.
- Input pulse amplitude: 3.2volts.
- Input pulse width: min 100% of total delay.
- Input pulse PPR: min 3 × pulse width.
- Input rise time: 2.0ns.

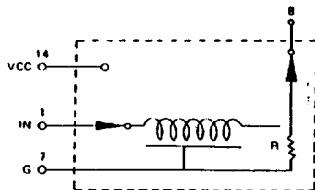
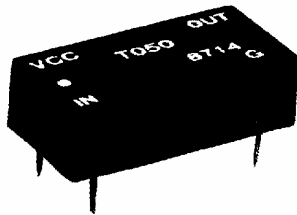
**Notes:**

- (1) Delay measured at 1.5 volts on leading edge only with no loads on output.
- (2) Rise time measured from 0.75 volts to 2.4 volts.
- (3) Others upon request.

**MECHANIC:**



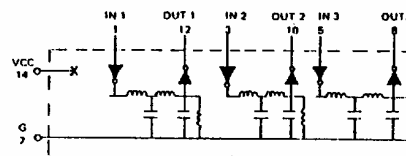
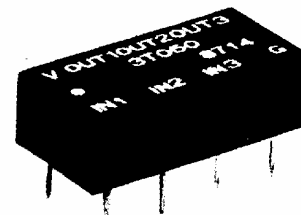
**T**



PART NO.	TOTAL DELAY (ns)	TAP TO TAP (ns)
T010	10±1.5	4
T020	20±1.5	4
T030	30±2	4
T040	40±2	4
T050	50±2.5	4
T060	60±3	4
T070	70±3.5	4
T080	80±4	4
T090	90±4.5	4
T100	100±5	4

PART NO.	TOTAL DELAY (ns)	TAP TO TAP (ns)
T125	125±6.2	4
T150	150±7.5	4
T175	175±8.7	4
T200	200±10	4
T250	200±10	4
T300	250±12.5	4
T350	300±15	4
T400	400±20	4
T450	450±22.5	4
T500	500±25	4

**3T**



PART NO.	TOTAL DELAY (ns)	TAP TO TAP (ns)
3T010	10±1.5	4
3T020	20±1.5	4
3T030	80±4	4
3T040	40±2	4
3T050	50±2.5	4

PART NO.	TOTAL DELAY (ns)	TAP TO TAP (ns)
3T060	60±3	4
3T070	70±3.5	4
3T080	80±4	4
3T090	90±4.5	4
3T100	100±5	4