

1

2

3

4

A

B

C

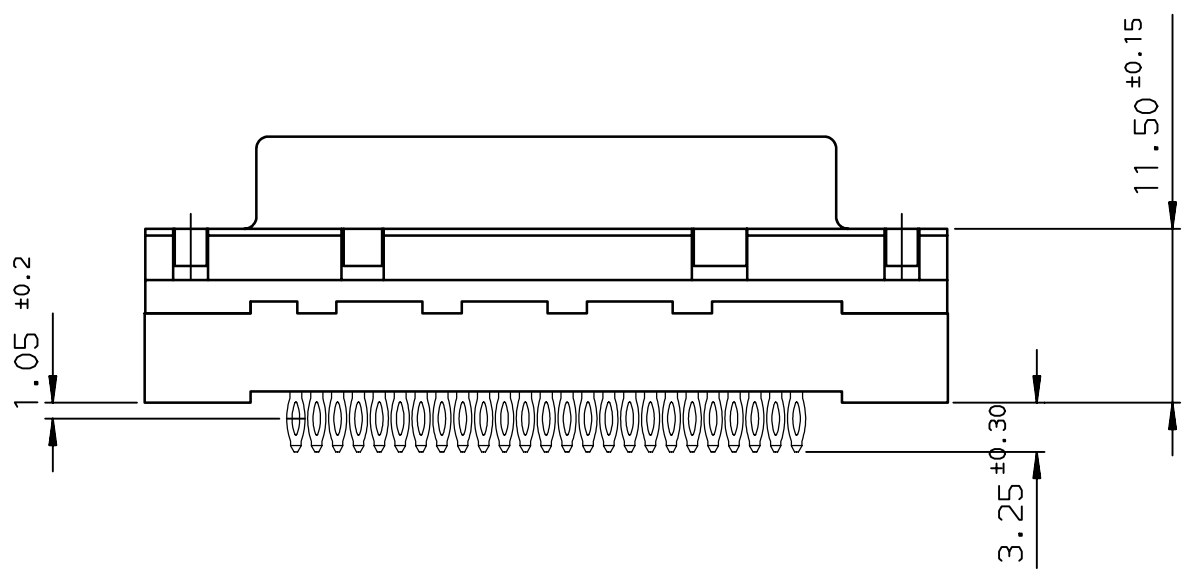
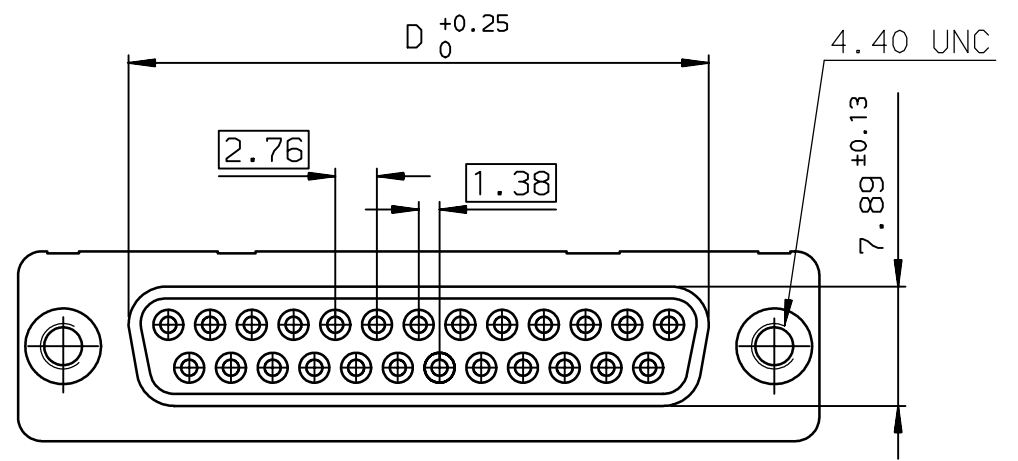
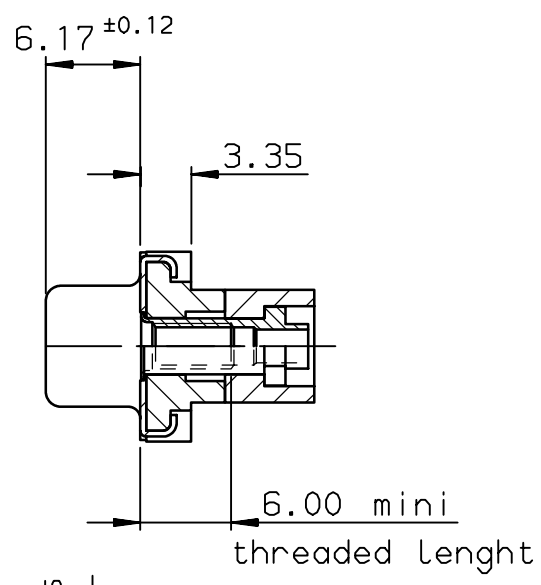
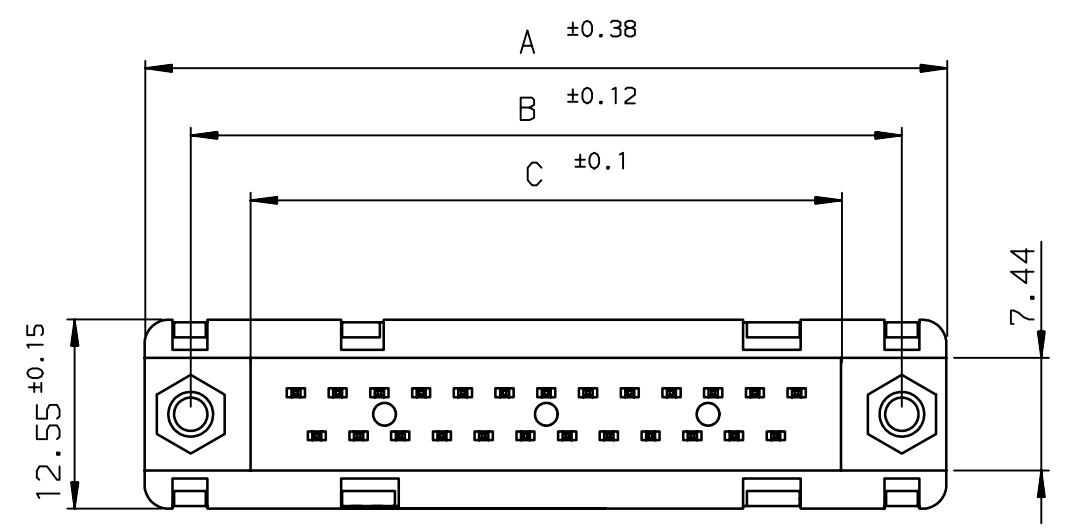
D

A

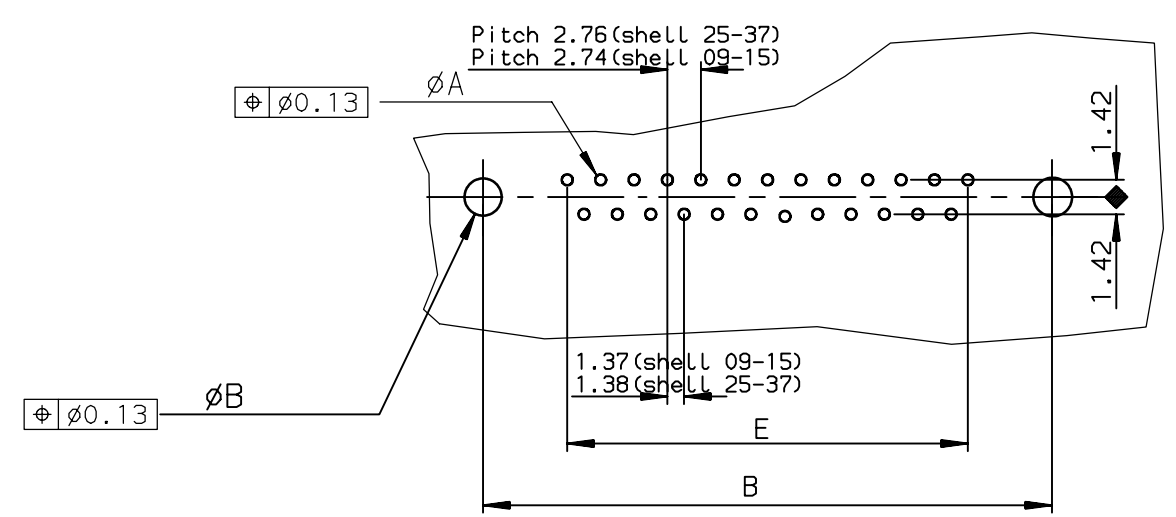
B

C

D



PC board drilling dimensions(after plating)
(thickness ≤ 3.20±0.30mm)



TIN LEAD PART NUMBER

SHELL	A±0.38	B±0.12	C±0.10	D±0.25	E±0.07	PART NUMBER
09	30.81	24.99	16.96	16.21	10.96	D09S92C6PX00
15	39.14	33.32	25.18	24.54	19.18	D15S92C6PX00
25	53.03	47.04	39.12	38.25	33.12	D25S92C6PX00
37	69.32	63.50	55.68	54.71	49.68	-

0.76µ gold

LEAD FREE PART NUMBER

SHELL	A±0.38	B±0.12	C±0.10	D±0.25	E±0.07	PART NUMBER
09	30.81	24.99	16.96	16.21	10.96	D09S92C6PX00LF
15	39.14	33.32	25.18	24.54	19.18	D15S92C6PX00LF
25	53.03	47.04	39.12	38.25	33.12	D25S92C6PX00LF
37	69.32	63.50	55.68	54.71	49.68	-

0.76µ gold

GENERAL CHARACTERISTICS AND ROHS INFORMATIONS:
SEE DRAWING C01-8646-0001

European Views

www.fciconnect.com		surface ISO 1302 ✓	tolerance std ISO 406 ISO 1101	projection mm
TOLERANCES UNLESS OTHERWISE SPECIFIED				
Dr	PESSON	1996/04/04	ANGULAR	0.X ±0.1
Eng	PESSON	1996/04/04	LINEAR	0.XX ±0.1
Chr	LEGARE	1996/04/04	0.XX' ±2'	0.XXX ±0.1
Appr	LEGARE	1996/04/04	Product family	D-SUB
Spec ref -				size A3
Scale 2				ECN LS06-0140
title FEMALE CONNECTOR DELTA D TYPE 92 straight press-fit				Rev. E
catalog no				dwg no C01-8646-0434
CUSTOMER				sheet 1 of 1

rev	ecn no	dr	date
B	-	-	1996/07/24
C	LS05-004	MPE	2005/02/14
D	LS06-0097	LGO	2006/07/29
E	LS06-0140	LGO	2006/09/22
-	-	-	-
-	-	-	-
-	-	-	-

1

2

3

4



Copyright FCI.