

# IP67 COMBINATION D-SUB

Solder pin – Straight – Precision machined contacts – Threaded rear spacer with PCB clip

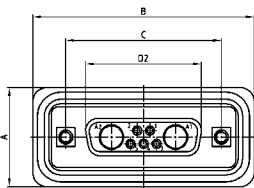


RoHS compliant – CSA listed, File No.: LR 115000-1 – UL listed, File No.: E202784

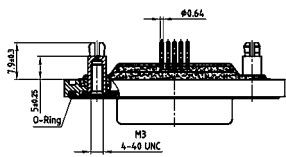
## DESCRIPTION

- Contacts: high power or coaxial contacts
- Mounting style: with 4-40 UNC or M3 threaded rear spacer with PCB clip
- Quality class 3 (also available in quality class 1)
- Shell: Brass tin plated (Stainless steel on request)
- Nickel plated die-cast frame (Black plastic frame on request)
- Suitable hex bolts are supplied loose

## SOCKET CONNECTOR

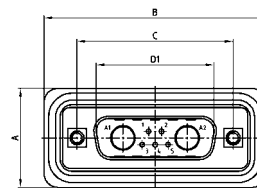
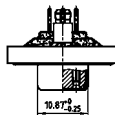
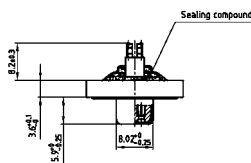


Shell size	A +0.2	B +0.2	C	D2 +0.25
1	21.10	39.40	25.00 <sup>+0.12/-0.13</sup>	16.46
2	21.10	47.70	33.30 <sup>+0.15/-0.10</sup>	24.79
3	21.10	61.40	47.04 <sup>+0.13</sup>	38.50
4	21.10	77.90	63.50 <sup>+0.13</sup>	54.96
5	23.90	75.50	61.10 <sup>+0.14/-0.11</sup>	52.55

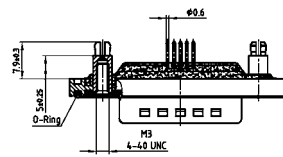


Shell size 1-4

Shell size 5

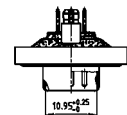
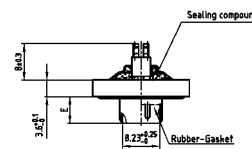


Shell size	A +0.2	B +0.2	C	D1 +0.25	E -0.30
1	21.10	39.40	25.00 <sup>+0.12/-0.13</sup>	16.79	5.82
2	21.10	47.70	33.30 <sup>+0.15/-0.10</sup>	25.12	5.82
3	21.10	61.40	47.04 <sup>+0.13</sup>	38.84	5.69
4	21.10	77.90	63.50 <sup>+0.13</sup>	55.30	5.69
5	23.90	75.50	61.10 <sup>+0.14/-0.11</sup>	52.68	5.69



Shell size 1-4

Shell size 5



## ORDER DATA

SOCKET CONNECTOR		High power contact	Part Number
5W1	Threaded rear spacer PCB clip	20 A	6 005W1SAR 68 E20X
7W2	Threaded rear spacer PCB clip	20 A	6 007W2SAR 68 E20X
11W1	Threaded rear spacer PCB clip	20 A	6 011W1SAR 68 E20X
9W4	Threaded rear spacer PCB clip	20 A	6 009W4SAR 68 E20X
13W3	Threaded rear spacer PCB clip	20 A	6 013W3SAR 68 E20X
17W2	Threaded rear spacer PCB clip	20 A	6 017W2SAR 68 E20X
21W1	Threaded rear spacer PCB clip	20 A	6 021W1SAR 68 E20X
13W6	Threaded rear spacer PCB clip	20 A	6 013W6SAR 68 E20X
17W5	Threaded rear spacer PCB clip	20 A	6 017W5SAR 68 E20X
21WA4	Threaded rear spacer PCB clip	20 A	6 21WA4SAR 68 E20X
25W3	Threaded rear spacer PCB clip	20 A	6 025W3SAR 68 E20X
27W2	Threaded rear spacer PCB clip	20 A	6 027W2SAR 68 E20X
24W7	Threaded rear spacer PCB clip	20 A	6 024W7SAR 68 E20X
36W4	Threaded rear spacer PCB clip	20 A	6 036W4SAR 68 E20X
43W2	Threaded rear spacer PCB clip	20 A	6 043W2SAR 68 E20X
47W1	Threaded rear spacer PCB clip	20 A	6 047W1SAR 68 E20X

PLUG CONNECTOR		High power contact	Part Number
5W1	Threaded rear spacer PCB clip	20 A	6 005W1PAR 68 E20X
7W2	Threaded rear spacer PCB clip	20 A	6 007W2PAR 68 E20X
11W1	Threaded rear spacer PCB clip	20 A	6 011W1PAR 68 E20X
9W4	Threaded rear spacer PCB clip	20 A	6 009W4PAR 68 E20X
13W3	Threaded rear spacer PCB clip	20 A	6 013W3PAR 68 E20X
17W2	Threaded rear spacer PCB clip	20 A	6 017W2PAR 68 E20X
21W1	Threaded rear spacer PCB clip	20 A	6 021W1PAR 68 E20X
13W6	Threaded rear spacer PCB clip	20 A	6 013W6PAR 68 E20X
17W5	Threaded rear spacer PCB clip	20 A	6 017W5PAR 68 E20X
21WA4	Threaded rear spacer PCB clip	20 A	6 21WA4PAR 68 E20X
25W3	Threaded rear spacer PCB clip	20 A	6 025W3PAR 68 E20X
27W2	Threaded rear spacer PCB clip	20 A	6 027W2PAR 68 E20X
24W7	Threaded rear spacer PCB clip	20 A	6 024W7PAR 68 E20X
36W4	Threaded rear spacer PCB clip	20 A	6 036W4PAR 68 E20X
43W2	Threaded rear spacer PCB clip	20 A	6 043W2PAR 68 E20X
47W1	Threaded rear spacer PCB clip	20 A	6 047W1PAR 68 E20X

PCB clip .122"/.31 ± .004"/0.10 mm hole diameter and .063"/1.6 mm circuit board thickness.

For other contact configurations refer to part number creator.

Contact	Code
High power 20 A; D=.080/1.95 mm =	68
High power 20 A; D=.102/2.60 mm =	69
High power 20 A; D=.110/2.85 mm =	70
High power 30 A; D=.130/3.18 mm =	71
High power 40 A; D=.150/3.75 mm =	72