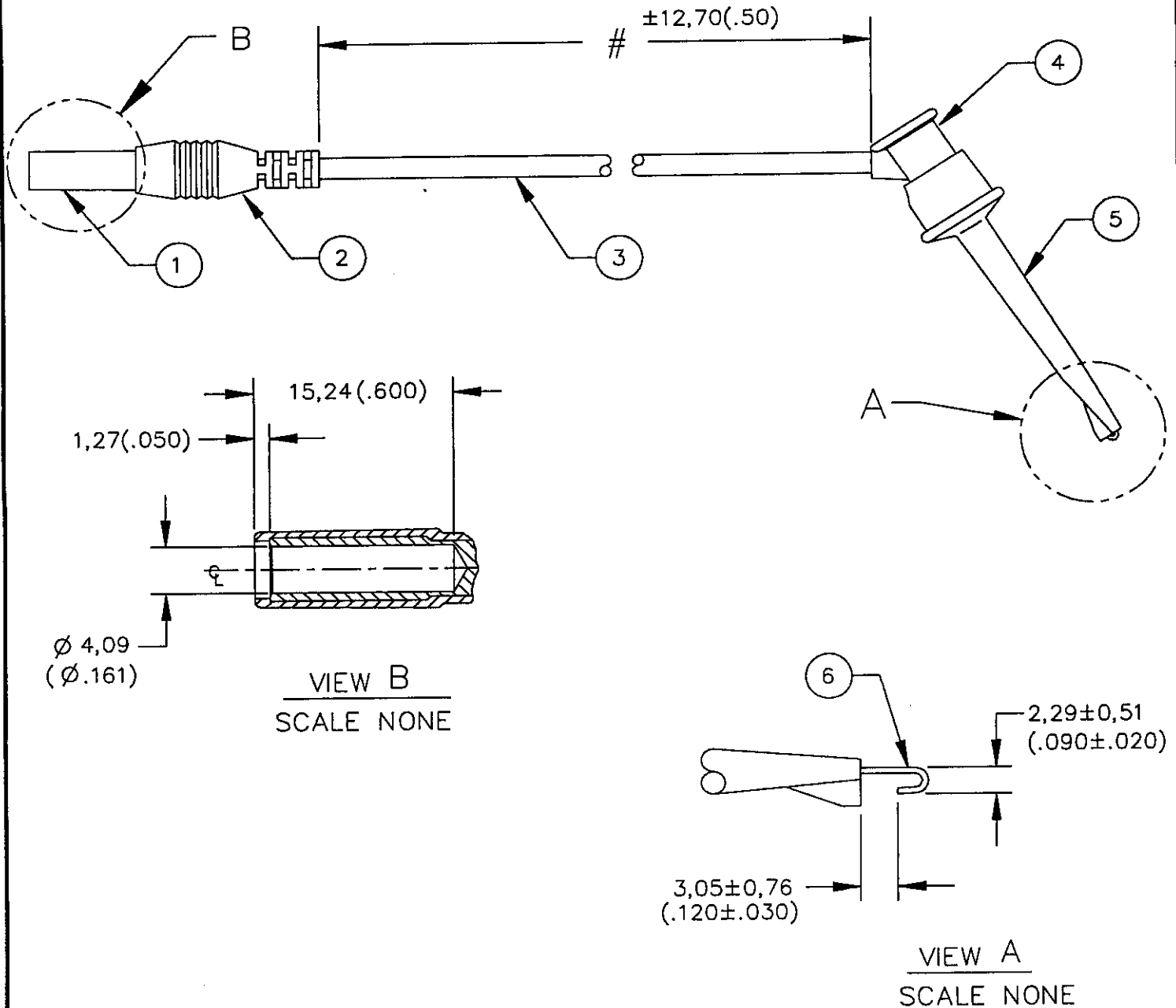


THIS IS ISSUED IN STRICT CONFIDENCE ON CONDITION THAT IT IS NOT USED AS A BASIS FOR MANUFACTURE OR SALE, THAT IT IS NOT COPIED, REPRINTED OR DISCLOSED TO A THIRD PARTY WHOLLY OR IN PART WITHOUT THE PRIOR WRITTEN CONSENT OF ITT POMONA.



UNLESS OTHERWISE SPECIFIED DIMENSIONS ARE IN MILLIMETERS: FRACTIONS DECIMALS ANGLES ±1/32 .X ±2,54 ±P .XX ±0,51 .XXX ±0,127	APPROVALS	DATE	ITT Pomona	1500 EAST NINTH ST. POMONA, CA. 91766	
	DRAWN WCW	AUG 20/93		Tel: (909) 469-2900 FAX: (909) 629-3317	
INCHES ARE IN PARENTHESIS MATERIAL	CHECKED		TITLE	MINIGRABBER® TEST CLIP TO POP JACK	
FINISH	ENGR. <i>J. Lee</i>	8/20/93	SIZE	CAGE CODE	QWC. NO.
CHANGES SINCE PREVIOUS ISSUE NOTED BY: <input type="checkbox"/>	ENGR. MGR. <i>B. House</i>	8/23/93	A	05276	5545
	23 SEP 96		SCALE	1/1	REV. A
					SHEET 1 OF 2

THIS IS ISSUED IN STRICT CONFIDENCE ON CONDITION THAT IT IS NOT USED AS A BASIS FOR MANUFACTURE OR SALE, THAT IT IS NOT COPIED, REPRINTED OR DISCLOSED TO A THIRD PARTY WHOLLY OR IN PART WITHOUT THE PRIOR WRITTEN CONSENT OF ITT POMONA.

I. MATERIAL AND FINISH:

- GRABBER SPRING - STAINLESS STEEL
- GRABBER CONTACT - BERYLLIUM COPPER, GOLD PLATED.
- BARREL - NYLON 6/6.
- ACTUATOR - NYLON 6, GLASS FILLED.
- BANANA JACK INSULATION - NYLON 6,
- BANANA JACK - BRASS, NICKEL PLATED.
- WIRE - 18 AWG, SILICONE.

II. HARDWARE:

- ① BANANA JACK, ② PVC, ③ WIRE, ④ ACTUATOR,
- ⑤ BARREL, ⑥ GRABBER CONTACT.

III. RATING:

ENVIRONMENTAL:

OPERATING TEMP.: +50°C(+122°F) MAX.

ELECTRICAL:

OPERATING CURRENT: 7 AMPS MAX.

MODEL NUMBER

5545-#-##

-2	RED
-0	BLACK
COLOR	

LENGTH OF WIRE IN INCHES.

UNLESS OTHERWISE SPECIFIED DIMENSIONS ARE IN MILLIMETERS: FRACTIONS DECIMALS ANGLES ±1/32 .X ±2.54 ±P .XX ±0.51 .XXX ±0.127	APPROVALS	DATE	ITT Pomona 1500 EAST NINTH ST. POMONA, CA. 91766 Tel: (909) 469-2900 FAX: (909) 629-3517	
	DRAWN WCW	AUG 20/93		
INCHES ARE IN PARENTHESIS	CHECKED		TITLE MINIGRABBER® TEST CLIP TO POP JACK	
MATERIAL	ENGR. <i>J. Lee</i>	3/20/93	SIZE A	CAGE CODE 05276
	ENGR. MGR. <i>G. Hanson</i>	6/23/92	DWG. NO.	5545
CHANGES SINCE PREVIOUS ISSUE NOTED BY: <input type="checkbox"/>			SCALE NONE	REV. A
			SHEET	2 OF 2