

Model name

DSR 50-5-24

Input voltage: 24: 18 ~ 32VDC, 48: 32 ~ 63VDC
 Output voltage: 5 ~ 48V
 Name of series Output power: 30W, 50W, 180W

Features

- Long life and high reliability
Over 10 years lifetime at 40°C, full load
Vibration: 5G max.
- Wide operating temperature range: -20 ~ +71°C
- Input voltage range
DC24V input: DC18 ~ 32V, 48V input: 32 ~ 63V
- Wide variation
DC24V input: 17 models, 30/50/180W
DC48V input: 12 models, 30/50W
- 5 year warranty

5 year warranty

Specifications

1. Input voltage range	DC 24V input: DC 18 ~ 32V DC 48V input: DC 32 ~ 63V
2. Output voltage range	-10% ~ +20%
3. Line regulation	0.4% (DC18 ~ 32V/DC32 ~ 63V, at constant load)
4. Load regulation	0.8% (No load – full load, at constant input voltage)
5. Cooling	Convection cooling
6. Operating ambient temperature (Standard mounting)	-20 ~ +71°C (+61 ~ +70°C: Forced Air Cooling) -20°C: 50%, 0 ~ +50°C: 100%, +60°C: 70%, +71°C: 50%
7. Withstand voltage	Input-output: 1.5kVAC, input-FG: 1.5kVAC, output-FG: 500VAC for 1 min. (DSR180... Input/output-FG: 2.5kVAC, output-FG: 500VAC for 1 min.)
8. Vibration	When not operating 10 ~ 55Hz, amplitude 0.825mm constant (MAX. 5G), Sweep for 1 min., X, Y and Z axes for 1 hour
9. Functions	Over voltage protection, Over current protection, Thermal protection, Remote on/off control Low input protection, Power failure (Low output voltage detection signal) DSR180: Remote sensing, Output current balancing, Switching frequency synchronization Output voltage programmable by external control

Product lineup

Model name	Nominal output voltage	Max. output current	Max. output power	UL	CSA	
DSR30	DSR30-5-24	5V	6.0A	30.0W	Δ	Δ
	DSR30-12-24	12V	2.5A	30.0W	Δ	Δ
	DSR30-15-24	15V	2.0A	30.0W	Δ	Δ
	DSR30-24-24	24V	1.3A	31.2W	Δ	Δ
	DSR30-40-24	40V	0.8A	32.0W	Δ	Δ
	DSR30-48-24	48V	0.7A	33.6W	Δ	Δ
	DSR30-5-48	5V	6.0A	30.0W	Δ	Δ
	DSR30-12-48	12V	2.5A	30.0W	Δ	Δ
	DSR30-15-48	15V	2.0A	30.0W	Δ	Δ
	DSR30-24-48	24V	1.3A	31.2W	Δ	Δ
	DSR30-40-48	40V	0.8A	32.0W	Δ	Δ
	DSR30-48-48	48V	0.7A	33.6W	Δ	Δ

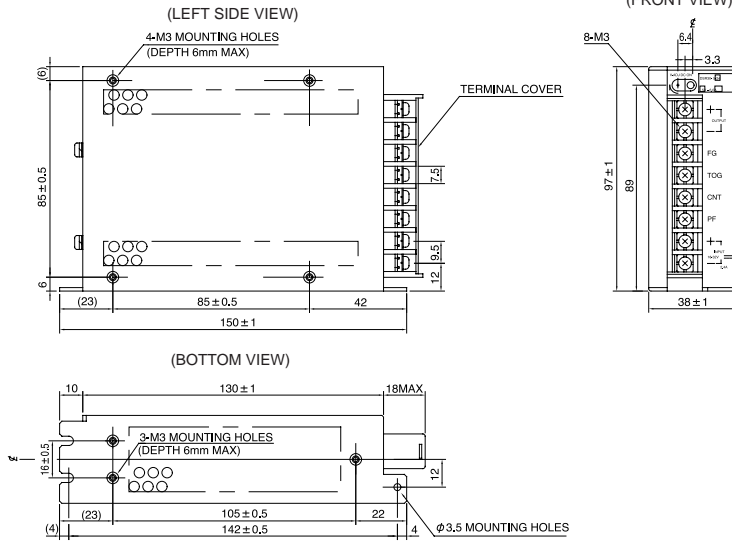
Model name	Nominal output voltage	Max. output current	Max. output power	UL	CSA	
DSR50	DSR50-5-24	5V	10.0A	50.0W	Δ	Δ
	DSR50-12-24	12V	4.3A	51.6W	Δ	Δ
	DSR50-15-24	15V	3.4A	51.0W	Δ	Δ
	DSR50-24-24	24V	2.1A	50.4W	Δ	Δ
	DSR50-40-24	40V	1.3A	52.0W	Δ	Δ
	DSR50-48-24	48V	1.1A	52.8W	Δ	Δ
	DSR50-5-48	5V	10.0A	50.0W	Δ	Δ
	DSR50-12-48	12V	4.3A	51.6W	Δ	Δ
	DSR50-15-48	15V	3.4A	51.0W	Δ	Δ
	DSR50-24-48	24V	2.1A	50.4W	Δ	Δ
	DSR50-40-48	40V	1.3A	52.0W	Δ	Δ
	DSR50-48-48	48V	1.1A	52.8W	Δ	Δ
DSR180	DSR180-5-24	5V	36A	180W	Δ	Δ
	DSR180-6-24	6V	30A	180W	Δ	Δ
	DSR180-12-14	12V	15A	180W	Δ	Δ
	DSR180-24-24	24V	7.5A	180W	Δ	Δ
	DSR180-48-24	48V	3.7A	177.6W	Δ	Δ

- Request customer specification for further details of specifications, outline, characteristics, etc.
Read the instruction manual before usage.
- Contact us about delivery before ordering.

Δ : Conforms to safety standard

DSR-SERIES

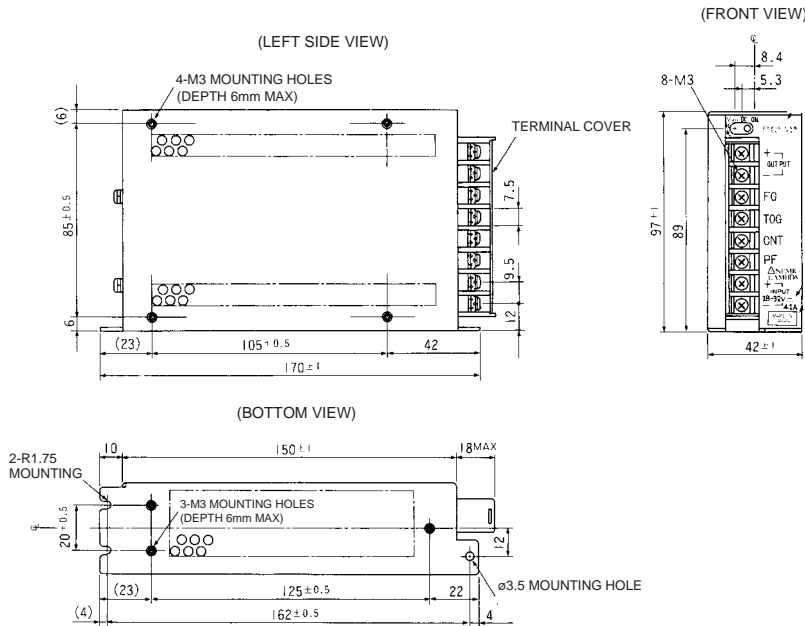
DSR30



Recommended Noise Filter
MAW-1203-22 GO!!

P134
(Unit: mm)

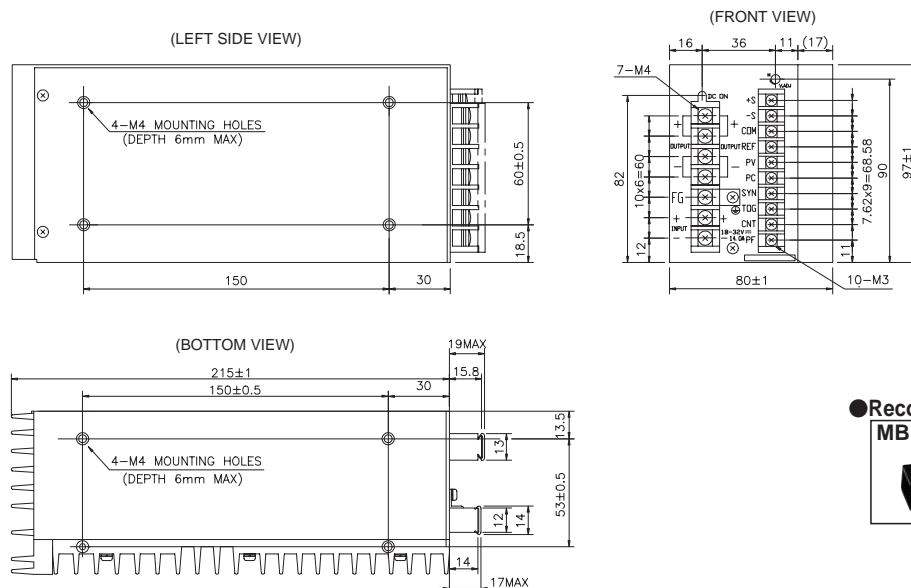
DSR50



Recommended Noise Filter
MAW-1205-22 GO!!

P134
(Unit: mm)

DSR180



Recommended Noise Filter
MB1220 GO!!

P137
(Unit: mm)

Unit Type Power Supply

DSR (Input : 110VDC)-SERIES

Single output 20W ~ 35W

LAMBDA
DENSEI-LAMBDA

Unit Type Power Supply



Model name

DSR 35-5-110

Input voltage: 110: 70 ~ 143VDC
Nominal output voltage: 2 ~ 48V
Name of series: Output power: 20W, 35W

Features

- 110VDC input, Single output
- Long life and high reliability
Over 10 years lifetime at 40°C, full load
Vibration: 5G max.
- Wide operating temperature range: -20 ~ +71°C
- Low input surge current 3.7A

Specifications

1. Input voltage range	DC 70 ~ 143V
2. Output voltage range	±10%
3. Line regulation	0.4% (DC18 ~ 32V/DC32 ~ 63V, at constant load/output 2V : 20mV)
4. Load regulation	0.4% (No load – full load, at constant input voltage/output 2V : 20mV)
5. Cooling	Convection cooling
6. Operating ambient temperature (Standard mounting)	-20 ~ +71°C
7. Withstand voltage	Input-output: 2.5kVAC, input-FG: 2.5kVAC for 1 min.(20mA), Output-FG: 500VAC for 1 min.(100mA)
8. Vibration	When not operating 10 ~ 55Hz, amplitude 0.825mm constant (MAX. 5G), Sweep for 1 min., X, Y and Z axes for 1 hour
9. Functions	Over voltage protection, Over current protection, Thermal protection, Remote on/off control Low input protection, Power failure (Low output voltage detection signal)

Product lineup

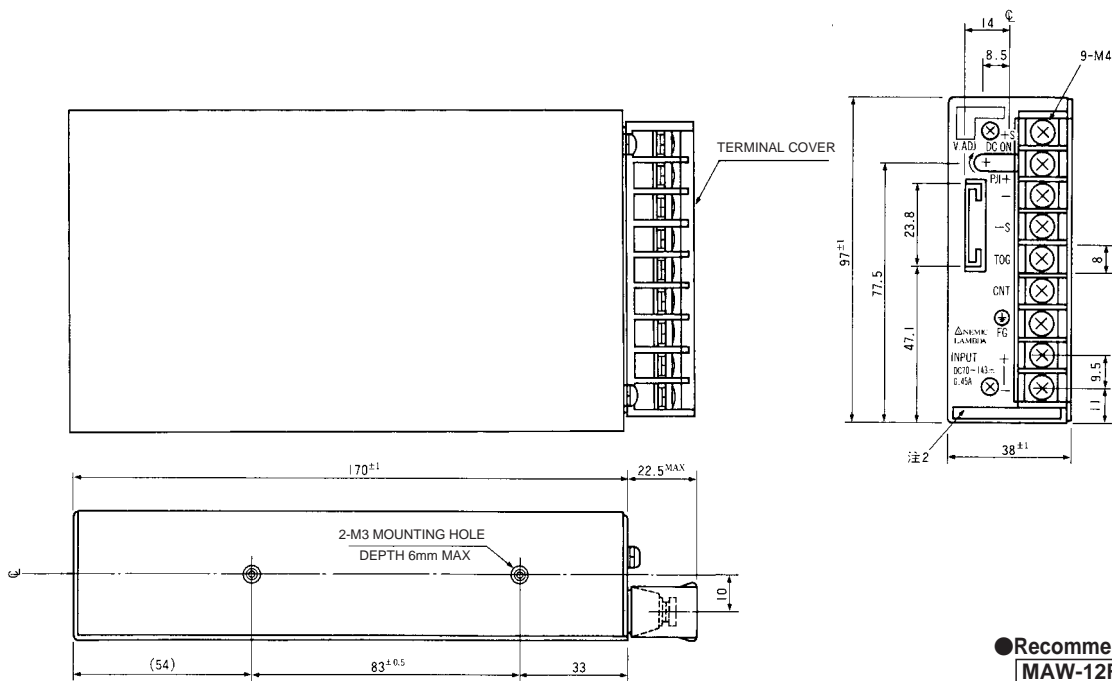
Model name	Nominal output voltage	Max. output current	Max. output power	UL	CSA	
DSR20	DSR20-2-110	2V	4.0A	8.0W	△	△
	DSR20-5-110	5V	4.0A	20.0W	△	△
	DSR20-6-110	6V	3.3A	19.8W	△	△
	DSR20-12-110	12V	1.7A	20.4W	△	△
	DSR20-15-110	15V	1.4A	21.0W	△	△
	DSR20-24-110	24V	0.9A	21.6W	△	△
	DSR20-40-110	40V	0.5A	20.0W	△	△
	DSR20-48-110	48V	0.4A	19.2W	△	△
DSR35	DSR35-2-110	2V	7.0A	14.0W	△	△
	DSR35-5-110	5V	7.0A	35.0W	△	△
	DSR35-6-110	6V	6.0A	36.0W	△	△
	DSR35-12-110	12V	3.0A	36.0W	△	△
	DSR35-15-110	15V	2.6A	39.0W	△	△
	DSR35-24-110	24V	1.8A	43.2W	△	△
	DSR35-40-110	40V	1.0A	40.0W	△	△
	DSR35-48-110	48V	0.9A	43.2W	△	△

- Request customer specification for further details of specifications, outline, characteristics, etc. Read the instruction manual before usage.
- Contact us about delivery before ordering.

△ : Conforms to safety standard

DSR-SERIES

■ DSR20 (Input:110VDC)



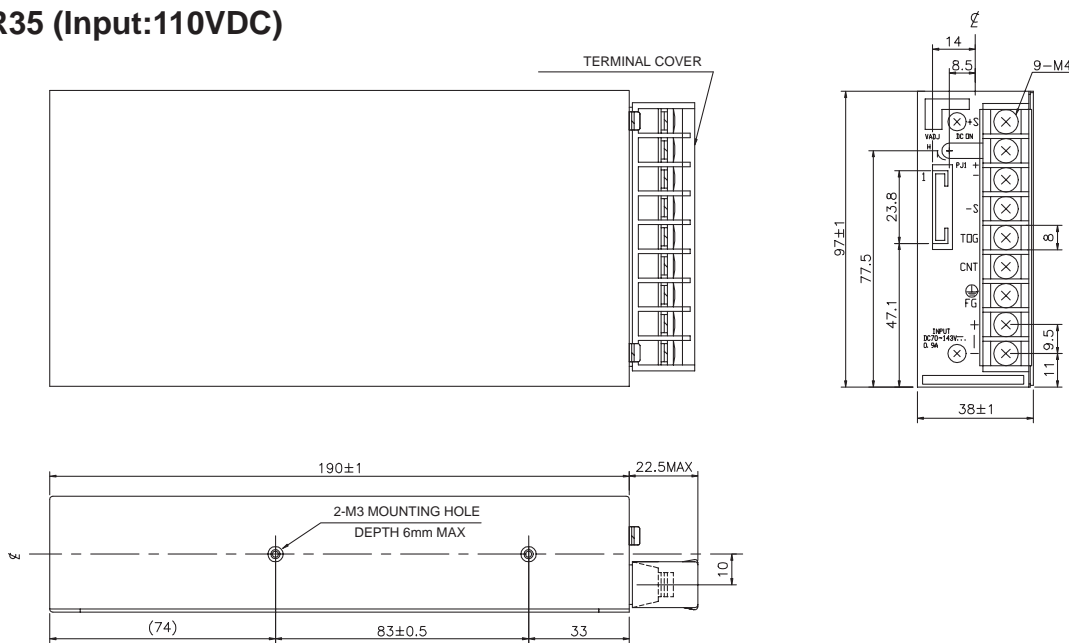
● Recommended Noise Filter



GO!!
P134

(Unit: mm)

■ DSR35 (Input:110VDC)



● Recommended Noise Filter



GO!!
P134

(Unit: mm)