

**MICRO SWITCH**

FREELPORT ILLINOIS U.S.A.  
A DIVISION OF HONEYWELL

FED. MFG. CODE 91929

**SWITCH-TOGGLE**

CATALOG LISTING  
**2TL887 SERIES**

**CHART 1**

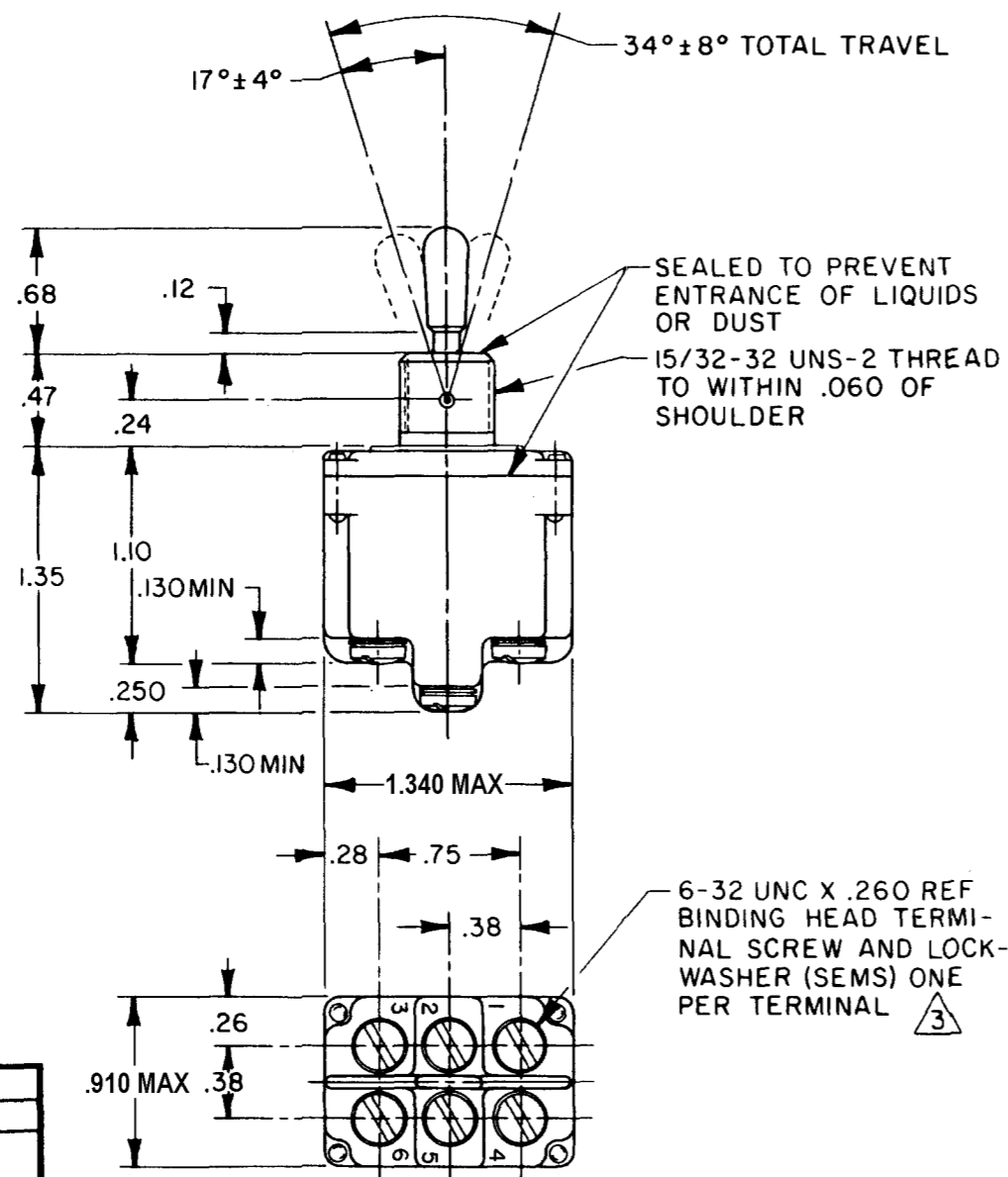
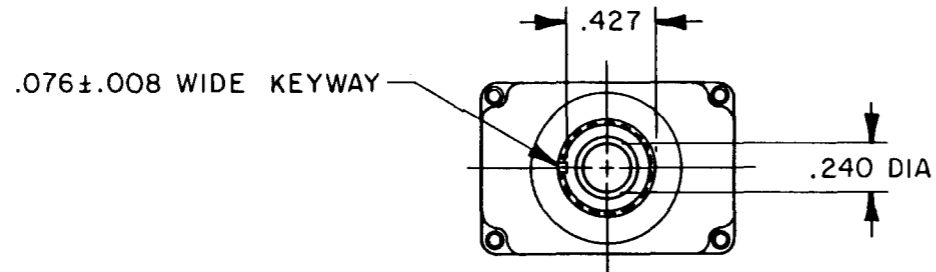
THIS DRAWING COVERS A PROPRIETARY ITEM AND IS THE PROPERTY OF MICRO SWITCH, A DIVISION OF HONEYWELL. THIS DRAWING IS NOT TO BE COPIED OR USED WITHOUT THE APPROVAL OF MICRO SWITCH.

CATALOG LISTING  
**M 2TL887 SERIES CHART 1**  
 PAGE 1 OF 1  
 ISSUE 5  
 MDM  
 05 FEB 04  
 RELEASE NO. PR-14254  
 REPLACES

REVISIONS

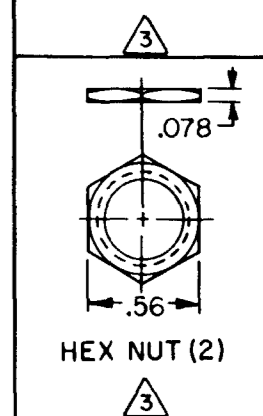
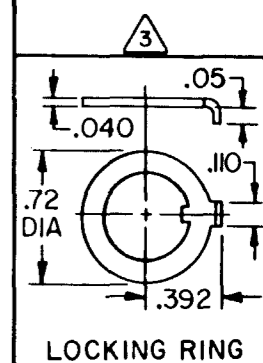
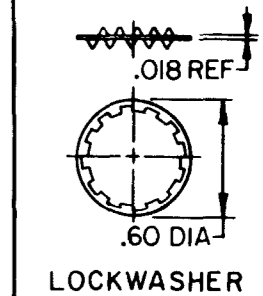
A	CO-79047	23 AUG 94	SAD
B	CO-95307	18 NOV 99	C.S.L.
C	CO-94439	24 NOV 99	C.S.L.
D	0003086	05 FEB 04	RS

FORMTEK  
 FO-5285-1-A  
 DRAWN  
 TSK 7 OCT 85  
 CHECK CEC 8 OCT 85  
 CHECK KJC 8 OCT 85  
 CHECK KJC 24 NOV 99  
 CHECK KJC 18 NOV 99



SCALE FULL  
 DO NOT SCALE PRINT  
 UNLESS OTHERWISE NOTED  
 DIMENSIONS ARE IN INCHES  
**TOLERANCES ARE:**  
 ONE PLACE (.0) ± .030  
 TWO PLACE (.00) ± .015  
 THREE PLACE (.000) ± .005  
 ANGLES ± .005  
 WEIGHT .12 LB APPROX

CATALOG LISTING	CIRCUIT MADE WITH TOGGLE LEVER IN			CURRENT CAPACITY (AMPS)								
	KEYWAY SIDE (1-2,4-5)	CENTER (1-2,4-5)	OPPOSITE KEYWAY (2-3,5-6)	RESISTIVE LOAD DC VOLTS		LAMP LOAD AC VOLTS		INDUCTIVE LOAD				
				28	125	250	125	250	28 VDC	125 VAC	28 VDC	125 VAC
2TL887-1	ON	OFF	ON									
ⓑ	OFF	NONE	ON									
2TL887-3	ON	NONE	ON	20	.75	.5	15	6	7	4	15	15
2TL887-2I	NONE	OFF	ON	(REFER TO L191 FOR UL LISTING)								
2TL887-3I	NONE	ON	ON	(REFER TO L191 FOR UL LISTING)								
2TL887-4	MOM OFF	NONE	ON									
2TL887-5	MOM ON	OFF	ON									
2TL887-6	MOM ON	NONE	OFF									
2TL887-7	MOM ON	OFF	MOM ON	18	.75	.5	11	6	5	2	10	8
ⓑ	MOM ON	NONE	ON	(REFER TO L192 FOR UL LISTING)								
2TL887-5I	NONE	ON	MOM ON	(REFER TO L192 FOR UL LISTING)								
2TL887-6I	MOM ON	OFF	NONE	(REFER TO L192 FOR UL LISTING)								



**NOTES**

- SWITCHES ARE CAPABLE OF WITHSTANDING A TEMPERATURE OF 160°F CONTINUOUSLY AT FULL RATED LOAD
- CIRCUIT DESIGNATION, AND MICRO SWITCH CATALOG LISTING MARKED ON SIDE OF SWITCH
- FURNISHED UNASSEMBLED
- FOR TERMINAL COVER SEE MICRO SWITCH CATALOG LISTING 5PA8
- APPLIES ONLY TO "MOMENTARY ON" POSITIONS
- GOLD PLATED OVER NICKEL PLATED CONTACTS, CARRIERS, BRACKETS AND INSERTS

L191  
 15A 125, 250, 277 VAC  
 1/2 HP 125 VAC;  
 1 HP 250, 277 VAC  
 5A 125 VAC "L"  
 RU Ⓢ CE

L192  
 10A 125, 250, 277 VAC  
 1/4 HP 125 VAC,  
 1/2 HP 250, 277 VAC  
 3A 125 VAC "L"  
 RU Ⓢ CE