



**Non-Insulated Terminals
PC Terminals & Eyelets**

Please refer to Figure 7001

Part No.	Board Thick	Mounting Hole Dia $+0.003$ -0.001	D Nom	L Nom	Swage Tool
7001A	.031	.064	.062	.062	7001
7001B	.062	.064	.062	.094	7001
7001C	.094	.064	.062	.125	7001
7001D	.125	.064	.062	.156	7001

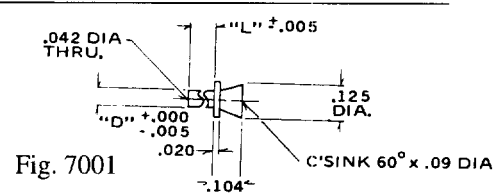


Fig. 7001

Please refer to Figure 7030

Part No.	Board Thick	Mounting Hole Dia $+0.003$ -0.001	D Nom	L Nom	Swage Tool
7030A	.031	.064	.062	.062	7030
7030B	.062	.064	.062	.094	7030
7030C	.094	.064	.062	.125	7030
7030D	.125	.064	.062	.156	7030

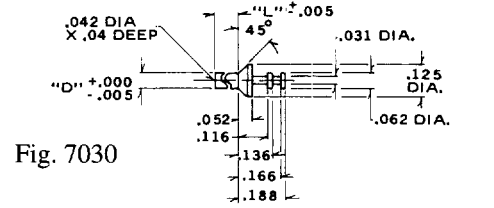


Fig. 7030

Please refer to Figure 7031

Part No.	Board Thick	Mounting Hole Dia $+0.003$ -0.001	D Nom	L Nom	Swage Tool
7031A	.031	.064	.062	.062	7031
7031B	.062	.064	.062	.094	7031
7031C	.094	.064	.062	.125	7031
7031D	.125	.064	.062	.156	7031

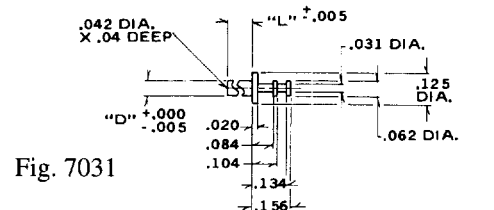


Fig. 7031

Please refer to Figure 7040

Part No.	Board Thick	Mounting Hole Dia $+0.003$ -0.001	D Nom	L Nom	Swage Tool
7040A	.031	.064	.062	.062	7040
7040B	.062	.064	.062	.094	7040
7040C	.094	.064	.062	.125	7040
7040D	.125	.064	.062	.156	7040

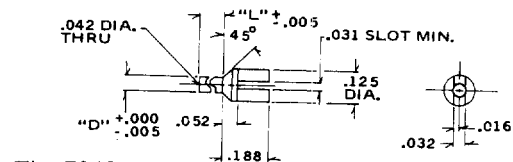


Fig. 7040

Please refer to Figure 7041

Part No.	Board Thick	Mounting Hole Dia $+0.003$ -0.001	D Nom	L Nom	Swage Tool
7041A	.031	.064	.062	.062	7041
7041B	.062	.064	.062	.094	7041
7041C	.094	.064	.062	.125	7041
7041D	.125	.064	.062	.156	7041

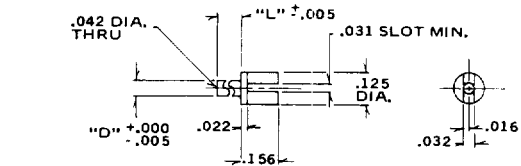


Fig. 7041

Please refer to Figure 7051

Part No.	Board Thick	Mounting Hole Dia $+0.003$ -0.001	D Nom	L Nom	Swage Tool
7051A	.016	.043	.038	.045	7051
7051B	.032	.043	.038	.060	7051
7051C	.062	.043	.038	.092	7051
7051D	.094	.043	.038	.132	7051

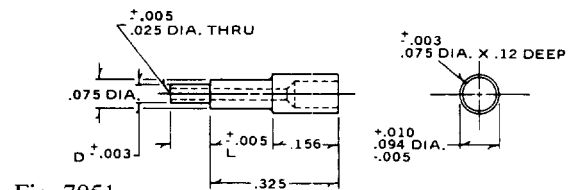


Fig. 7051

Please refer to Figure 7052

Part No.	Board Thick	Mounting Hole Dia $+0.003$ -0.001	D Nom	L Nom	Swage Tool
7052A	.016	.051	.047	.045	7052
7052B	.032	.051	.047	.070	7052
7052C	.062	.051	.047	.100	7552
7052D	.094	.051	.047	.132	7052

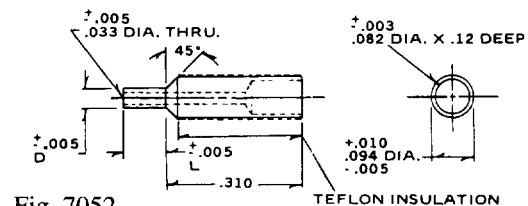


Fig. 7052

Standard Plating Suffix to Part Number Terminal
See Page 93 for all plating options. -7 (Au over Cu)

TOLERANCE: .xxx ±.005, .xx ±.01 (ALL DIMS. BEFORE PLATING)

