

**Motor Run**
**Construction**

- Dielectric: polypropylene film
- Plastic case
- Polyurethane resin

**Features**

- Self-healing properties
- Low dissipation factor
- High insulation resistance

**Typical applications**

For general sine wave applications, mainly as motor run capacitor.

**Terminals**

- B32324 Single Faston 6,3 x 0,8 mm (same side)

**Mounting parts**

- Metal stud (max. torque = 5 Nm)
- Plastic stud (max. torque = 3 Nm)

**Technical data and specifications**

|                         |                        |
|-------------------------|------------------------|
| Standard                | IEC 60252 / EN 60252   |
| Rated capacitance $C_N$ | 2 .. 60 $\mu$ F        |
| Tolerance               | $\pm 5\%$ , $\pm 10\%$ |
| Rated voltage $U_N$     | 250 .. 450 Vac         |
| Rated frequency $f_N$   | 50.. 60 Hz             |
| Life expectancy         | 10.000 h ( Class B )   |

**Maximum ratings**

|                                       |   |
|---------------------------------------|---|
| Maximum permissible voltage $U_{max}$ | $1,1 \times U_N$ ( $U_N$ : rated voltage) |
| Maximum permissible current $I_{max}$ | $1,3 \times I_N$ ( $I_N$ : rated current) |



**Technical data (cont`d)**
**Test data**

|   |                                    |
|---|------------------------------------|
| AC test voltage terminal to terminal $U_{TT}$                   | $2 \times U_N, 60 \text{ s}$       |
| Insulation voltage terminals to case                            | 2000 Vac                           |
| Insulation resistance $R_{is}$ or time constant $\tau$ at 20 °C |                                    |
| Rel. Humidity $\leq 65$ °C (minimum value)                      | 3000 s                             |
| Dissipation factor $\tan\delta$ at 20 °C                        | $\leq 1,0 \times 10^{-3}$ (120 Hz) |
| Maximum rate of voltage rise $du/dt_{max}$                      | 10 V/ $\mu$ s                      |

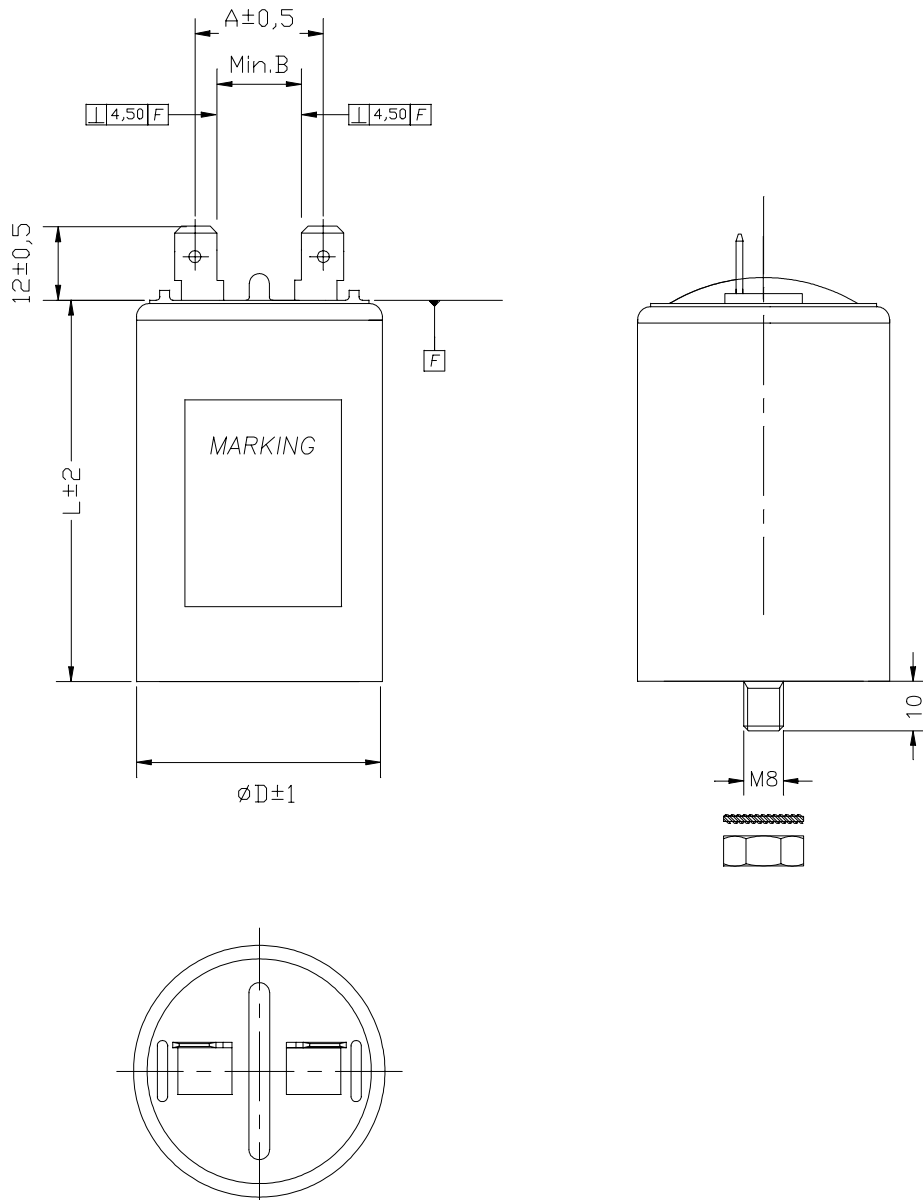
**Climatic data**

|                                    |   |
|------------------------------------|---|
| Climatic category                  | 25/085/21<br>in accordance with IEC 60068-1 |
| Lower category $T_{min}$           | -25 °C                                      |
| Upper category $T_{max}$           | +85 °C                                      |
| Damp heat test $t_{test}$          | 21 days                                     |
| Permitted capacitance $\Delta C/C$ | $\leq 3 \%$                                 |

**Note :**

- 1) It should be noted that presence of harmonics produces over voltage & over current on capacitors. Resonance may cause serious damage to installation if a significant level of total harmonic distortion level exists for voltage or current. In such cases, series reactors must be considered.
- 2) Operating temperature class: In accordance with the reference standards, these temperatures are those measured on the surface on the capacitor

Dimensional drawings



**Ordering codes and packing units**

| U <sub>N</sub><br>Vac | C <sub>N</sub><br>μF | Max. dimensions<br>d x l (mm)<br>B32324 | Ordering code      | Packing unit (pcs.) |
|-----------------------|----------------------|---|--------------------|---------------------|
| 250                   | 4                    | 30 x 62                                 | B32324-A1405-+0\$0 | 112                 |
|                       | 5                    | 30 x 62                                 | B32324-A1505-+0\$0 | 112                 |
|                       | 6                    | 30 x 62                                 | B32324-A1605-+0\$0 | 112                 |
|                       | 7                    | 30 x 62                                 | B32324-A1705-+0\$0 | 112                 |
|                       | 8                    | 30 x 62                                 | B32324-A1805-+0\$0 | 112                 |
|                       | 9                    | 30 x 62                                 | B32324-A1905-+0\$0 | 112                 |
|                       | 10                   | 30 x 62                                 | B32324-A1103-+0\$0 | 112                 |
|                       | 12                   | 30 x 62                                 | B32324-A1126-+0\$0 | 112                 |
|                       | 15                   | 30 x 62                                 | B32324-A1156-+0\$0 | 112                 |
|                       | 20                   | 35 x 62                                 | B32324-A1206-+0\$0 | 84                  |
|                       | 25                   | 35 x 71                                 | B32324-A1256-+0\$0 | 84                  |
|                       | 30                   | 35 x 71                                 | B32324-A1306-+0\$0 | 84                  |
|                       | 35                   | 40 x 71                                 | B32324-A1356-+0\$0 | 45                  |
|                       | 40                   | 40 x 71                                 | B32324-A1406-+0\$0 | 45                  |
|                       | 45                   | 40 x 71                                 | B32324-A1456-+0\$0 | 45                  |
|                       | 50                   | 40 x 98                                 | B32324-A1506-+0\$0 | 45                  |
|                       | 55                   | 40 x 98                                 | B32324-A1556-+0\$0 | 45                  |
| 60                    | 40 x 98              | B32324-A1606-+0\$0                      | 45                 |                     |

**Motor Run**

| U <sub>N</sub><br>Vac | C <sub>N</sub><br>μF | Max. dimensions<br>d x l (mm)<br>B32324 | Ordering code      | Packing unit (pcs.) |
|-----------------------|----------------------|---|--------------------|---------------------|
| 400                   | 2                    | 30 x 62                                 | B32324-A4205-+0\$0 | 112                 |
|                       | 3                    | 30 x 62                                 | B32324-A4305-+0\$0 | 112                 |
|                       | 4                    | 30 x 62                                 | B32324-A4405-+0\$0 | 112                 |
|                       | 5                    | 30 x 62                                 | B32324-A4505-+0\$0 | 112                 |
|                       | 6                    | 30 x 62                                 | B32324-A4605-+0\$0 | 112                 |
|                       | 7                    | 35 x 62                                 | B32324-A4705-+0\$0 | 84                  |
|                       | 8                    | 35 x 62                                 | B32324-A4805-+0\$0 | 84                  |
|                       | 10                   | 35 x 62                                 | B32324-A4106-+0\$0 | 84                  |
|                       | 12                   | 35 x 71                                 | B32324-A4126-+0\$0 | 84                  |
|                       | 15                   | 40 x 71                                 | B32324-A4156-+0\$0 | 45                  |
|                       | 20                   | 40 x 71                                 | B32324-A4206-+0\$0 | 45                  |
|                       | 25                   | 40 x 98                                 | B32324-A4256-+0\$0 | 45                  |
|                       | 30                   | 40 x 98                                 | B32324-A4306-+0\$0 | 45                  |
|                       | 35                   | 45 x 95                                 | B32324-A4356-+0\$0 | 45                  |
|                       | 40                   | 45 x 95                                 | B32324-A4406-+0\$0 | 45                  |
|                       | 45                   | 50 x 95                                 | B32324-A4456-+0\$0 | 32                  |
| 50                    | 50 x 95              | B32324-A4506-+0\$0                      | 32                 |                     |

**Motor Run**

| U <sub>N</sub><br>Vac | C <sub>N</sub><br>μF | Max. dimensions<br>d x l (mm)<br>B32324 | Ordering code      | Packing unit (pcs.) |
|-----------------------|----------------------|---|--------------------|---------------------|
| 450                   | 3                    | 30 x 62                                 | B32324-A6305-+0\$0 | 112                 |
|                       | 6                    | 35 x 62                                 | B32324-A6605-+0\$0 | 84                  |
|                       | 8                    | 35 x 71                                 | B32324-A6805-+0\$0 | 84                  |
|                       | 10                   | 40 x 71                                 | B32324-A6106-+0\$0 | 45                  |
|                       | 12                   | 40 x 71                                 | B32324-A6126-+0\$0 | 45                  |
|                       | 15                   | 45 x 71                                 | B32324-A6156-+0\$0 | 45                  |
|                       | 20                   | 45 x 71                                 | B32324-A6206-+0\$0 | 45                  |
|                       | 25                   | 45 x 95                                 | B32324-A6256-+0\$0 | 45                  |
|                       | 30                   | 45 x 95                                 | B32324-A6306-+0\$0 | 45                  |
|                       | 35                   | 50 x 95                                 | B32324-A6356-+0\$0 | 32                  |
|                       | 40                   | 45 x 120                                | B32324-A6406-+0\$0 | 45                  |
|                       | 45                   | 50 x 120                                | B32324-A6456-+0\$0 | 32                  |
|                       | 50                   | 50 x 120                                | B32324-A6506-+0\$0 | 32                  |

**Notes for ordering code:**

+ Replace for capacitance tolerance

J - ± 5%

K - ± 10%

\$ Replace for construction

1 - Plastic case FRPP (UL94 V-2)

2 - Plastic case PP

3 - Plastic case FRPP and M8 bolt

4 - Plastic case PP and M8 bolt

© EPCOS AG 2000. All Rights Reserved. Reproduction, publication and dissemination of this data sheet, enclosures hereto and the information contained therein without EPCOS' prior express consent is prohibited.

The information contained in this data sheet describes the type of component and shall not be considered as guaranteed characteristics. Purchase orders are subject to the General Conditions for the Supply of Products and Services of the Electrical and Electronics Industry recommended by the ZVEI (German Electrical and Electronic Manufacturers' Association), unless otherwise agreed.