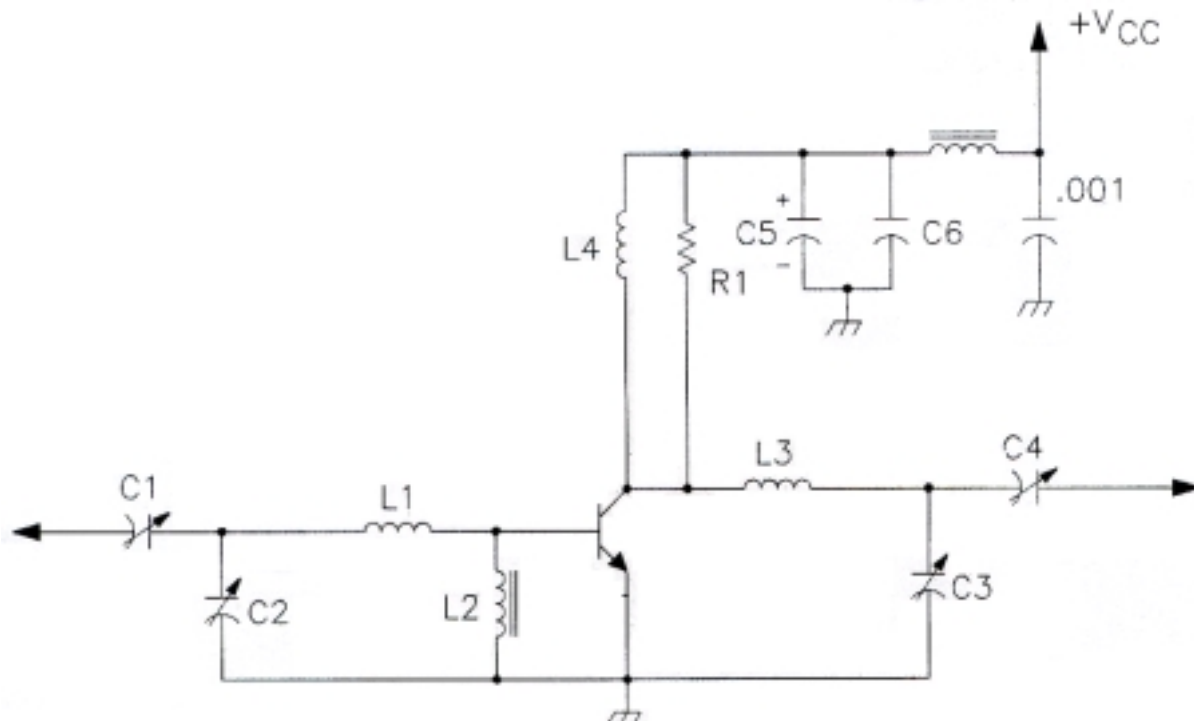


TEST CIRCUIT



- | | | | |
|-------|-----------------------------------|-------|--|
| C1 | : 24 - 200pF Arco 425 | L1 | : 4 Turns, #16 AWG, Tinned, 0.40" I.D. |
| C2,C4 | : 50 - 380pF Arco 465 | L2,L5 | : 1 Turn, #22 AWG, Tinned, formed with VK-200 #4B Ferroxcube |
| C3 | : 9 - 180pF Arco 463 | L4 | : 17 Turns, #18 Enameled Wire Wrapped Around R1 |
| C5 | : 10 μ F, Electrolytic, 35Vdc | R1 | : 390 Ω Resistor (2 Watt) |
| C6 | : 0.01 μ F, 100V, Ceramic | | |

SAFE OPERATING AREA

