

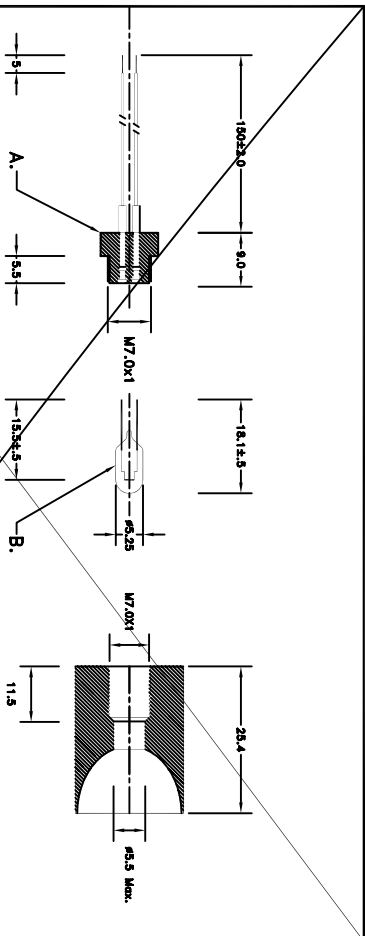
**SPECIFICATIONS:**  
 A. H320-150 HOLDER.  
 B. LAMP 187 OR 188 PER CUSTOMER CHOICE.  
 C. MR6(G)-71 ELLIPSOIDAL REFLECTOR (OPTIONAL GOLD COATED). QTY: 1

**ORDERING INFORMATION:**

**MR6E-187** - ELLIPSOIDAL REFLECTOR EQUIPPED WITH 187 LAMP.  
 4.2V, 1.05A, 3.88 MSCP, 650 HOURS LIFE.  
**MR6E-188** - ELLIPSOIDAL REFLECTOR EQUIPPED WITH 188 LAMP.  
 5.0V, 1.00A, 3.34 MSCP, 10,000 HOURS LIFE.  
**MR6E-187** - GOLD COATED ELLIPSOIDAL REFLECTOR EQUIPPED WITH 187 LAMP.  
 4.2V, 1.05A, 3.88 MSCP, 650 HOURS LIFE.  
**MR6E-188** - GOLD COATED ELLIPSOIDAL REFLECTOR EQUIPPED WITH 188 LAMP.  
 5.0V, 1.00A, 3.34 MSCP, 10,000 HOURS LIFE.

**TOLERANCES: ±0.1mm EXCEPT WHERE IS NOTED.**

SCALE: none	DRAWN BY: VALSIBU
DATE: 08/22/01	APPROVED BY:
<b>MR6(G)-XXX</b>	(187/188 Lamp - Ellipsoidal Reflector Assn.)
DIMENSIONS-MILLIMETERS	Drawing Number: 155-1526



**SPECIFICATIONS:**  
 A. H320-150 HOLDER.  
 B. LAMP 187 OR 188 PER CUSTOMER CHOICE.  
 C. MR6(G)-71 ELLIPSOIDAL REFLECTOR (OPTIONAL GOLD COATED). QTY: 1

**ORDERING INFORMATION:**

**MR6E-187** - ELLIPSOIDAL REFLECTOR EQUIPPED WITH 187 LAMP.  
 4.2V, 1.05A, 3.88 MSCP, 650 HOURS LIFE.  
**MR6E-188** - ELLIPSOIDAL REFLECTOR EQUIPPED WITH 188 LAMP.  
 5.0V, 1.00A, 3.34 MSCP, 10,000 HOURS LIFE.  
**MR6E-187** - GOLD COATED ELLIPSOIDAL REFLECTOR EQUIPPED WITH 187 LAMP.  
 4.2V, 1.05A, 3.88 MSCP, 650 HOURS LIFE.  
**MR6E-188** - GOLD COATED ELLIPSOIDAL REFLECTOR EQUIPPED WITH 188 LAMP.  
 5.0V, 1.00A, 3.34 MSCP, 10,000 HOURS LIFE.

**TOLERANCES: ±0.1mm EXCEPT WHERE IS NOTED.**

SCALE: none	DRAWN BY: VALSIBU
DATE: 08/16/01	APPROVED BY:
<b>MR6(G)-XXX</b>	(187/188 Lamp - Ellipsoidal Reflector Assn.)
DIMENSIONS-MILLIMETERS	Drawing Number: 155-1525