



## ■ Features

- (1) Wide band: High attenuation.  
Band wide: 150kHz ~ 30MHz, 2 stage filter
- (2) Block terminal with cover type  
Simple wire connection, high safety by cover
- (3) Compact, low profile package  
Low profile metal case, 10A type: 26mm

## ■ Safety standard

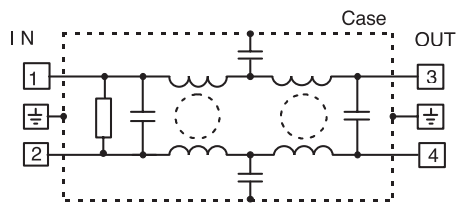
- UL1283, CSA Std. C22. 2 No. 8
  - VDE0565 Teil 3, Teil 3A2
  - EN133200
- (VDE0565 will expire on July 23, 2003.)

## ■ Specifications

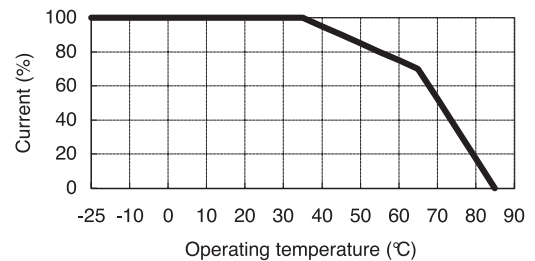
Items	Model	MB1206	MB1210	MB1216	MB1220	MB1236
1	Rated voltage (AC, DC)	250V				
2	Rated current (AC, DC) (Note 1)	6A	10A	16A	20A	36A
3	Test voltage (terminal to case, AC 1 minute)	2500V (20mA) at 25°C, 70% RH				
4	Isolation resistance (terminal to case, 500VDC)	100MΩ min. at 25°C, 70% RH				
5	Leakage current	0.5mA max.				
		1mA max.				
6	DC resistance	140mΩ max.	50mΩ max.	34mΩ max.	20mΩ max.	9mΩ max.
7	Temperature rise	40°C max.				
8	Operating temperature	-25 ~ +85°C				
9	Operating humidity	30% ~ 95% RH (No dewdrop)				
10	Storage temperature	-40 ~ +85°C				
11	Storage humidity	10% ~ 95% RH (No dewdrop)				
12	Vibration	Sweep: 10 ~ 55 ~ 10Hz (for 1 minute), Amplitude: 1.5mm X, Y and Z axes for 2 hours each				
13	Safety standard	Approved by UL1283, CSA C22.2 No. 8 (C-UL), VDE0565 Teil3, Teil3A2 and EN133200 (VDE)				
14	Weight (typ)	190g	220g	310g	530g	660g

(Note) : Value at Ta ≤ 35°C. Refer to the derating curve shown below at Ta > 35°C.

## ■ Circuit



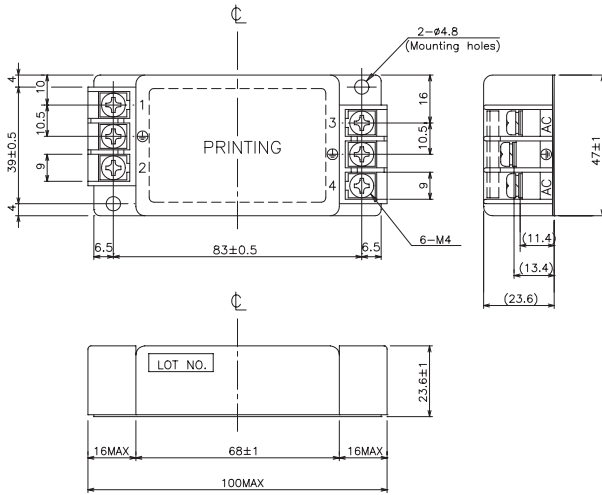
## ■ Derating



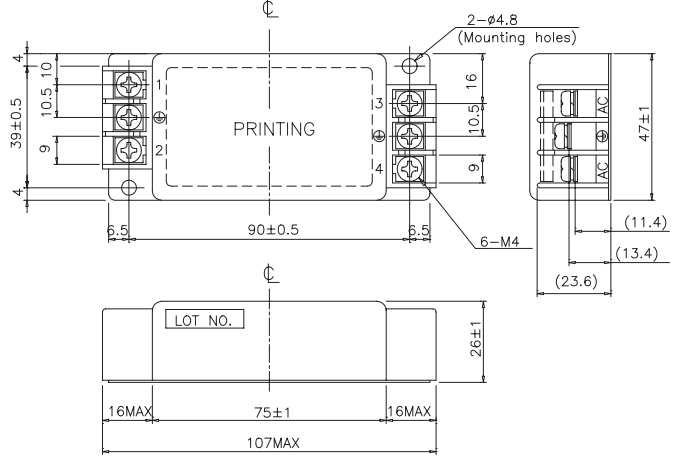
- Request customer specification for further details of specifications, outline, characteristics, etc. Read the instruction manual before usage.
- Contact us about delivery before ordering.

# MB-SERIES

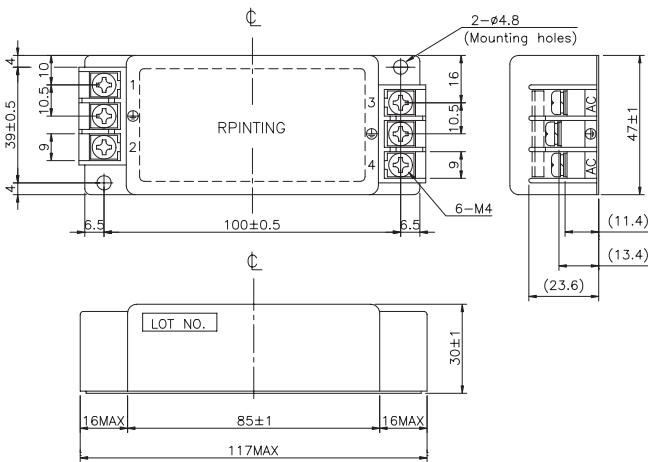
## MB1206



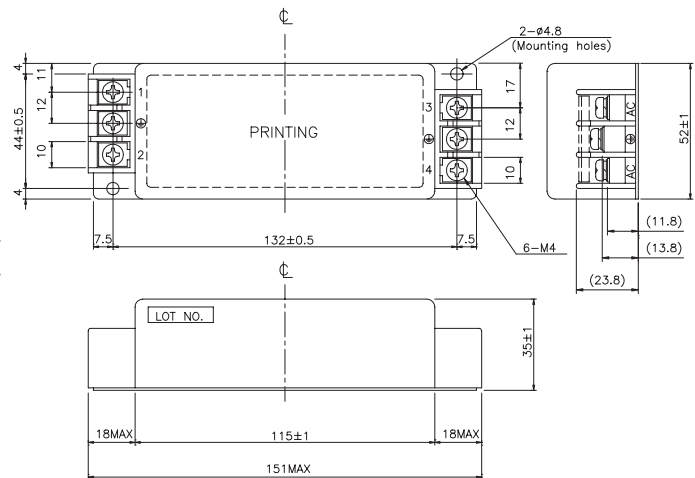
## MB1210



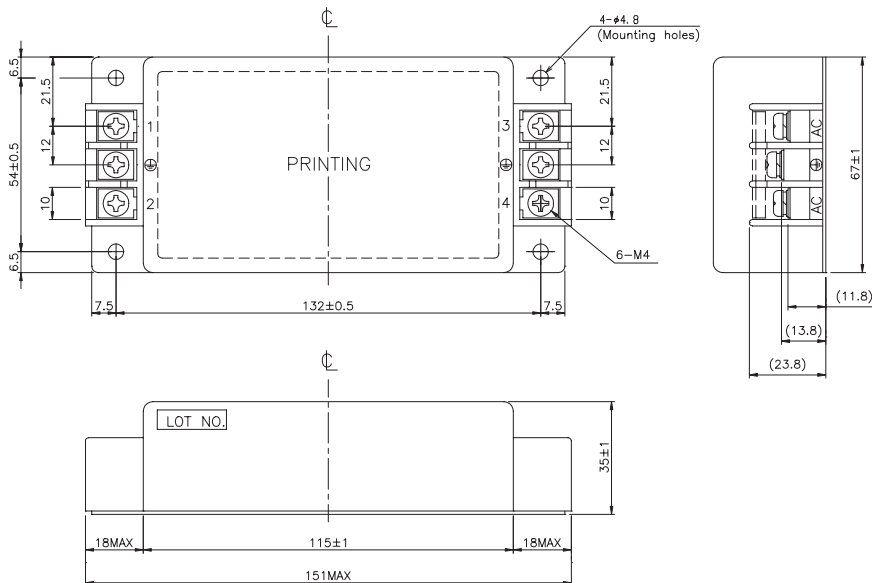
## MB1216



## MB1220



## MB1236



Case: Metal

(Unit: mm)

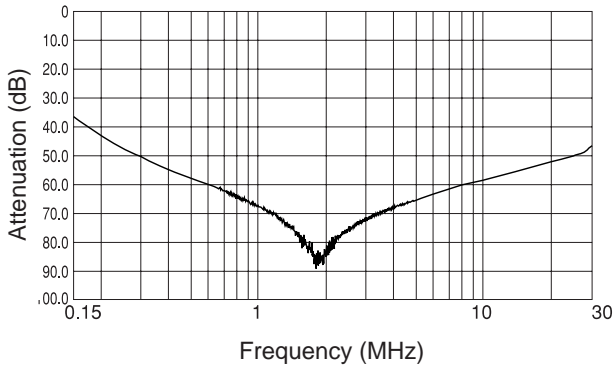
# MB-SERIES

## CHARACTERISTICS

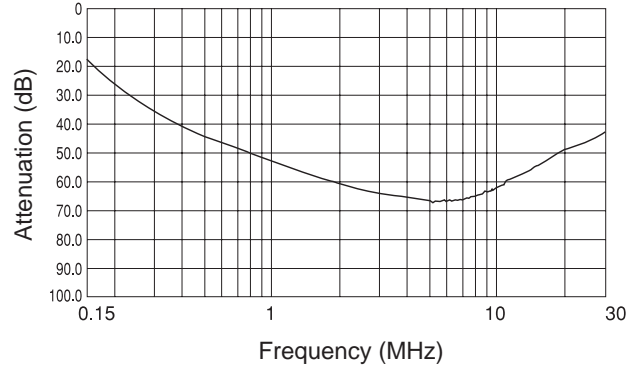
■ Typical Insertion Loss

(1) Asymmetrical

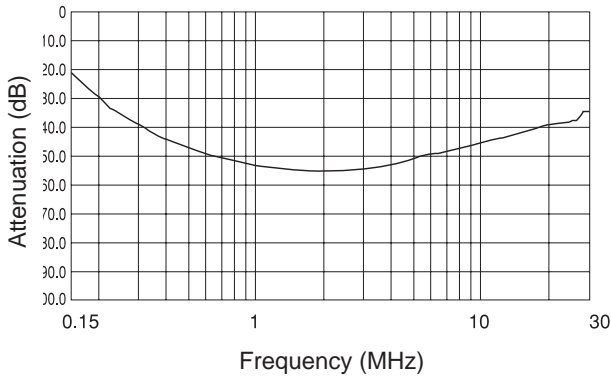
**MB1206**



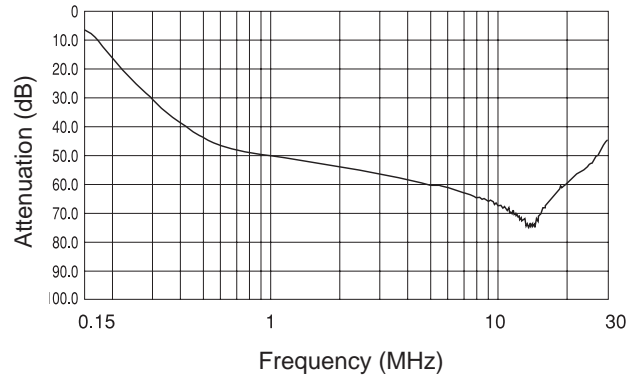
**MB1210**



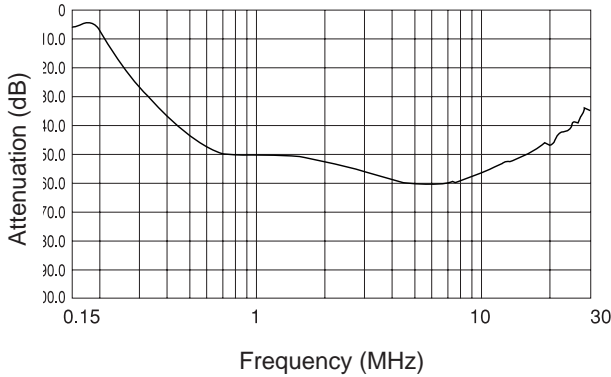
**MB1216**



**MB1220**



**MB1236**



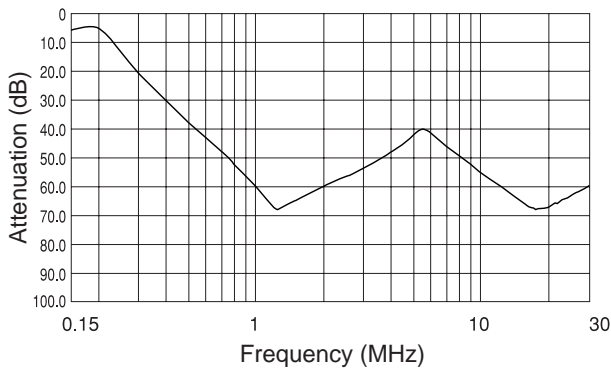
Noise Filter

## CHARACTERISTICS

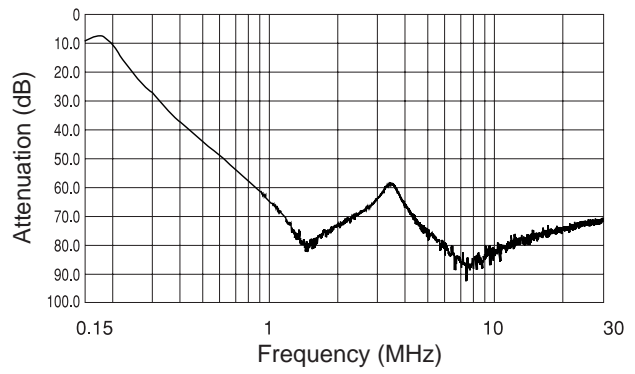
### ■ Typical Insertion Loss

(2) Symmetrical

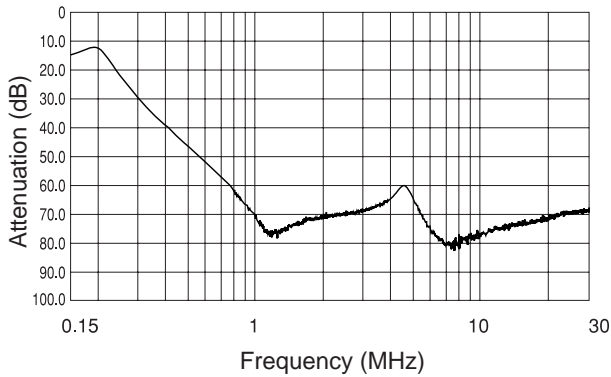
#### MB1206



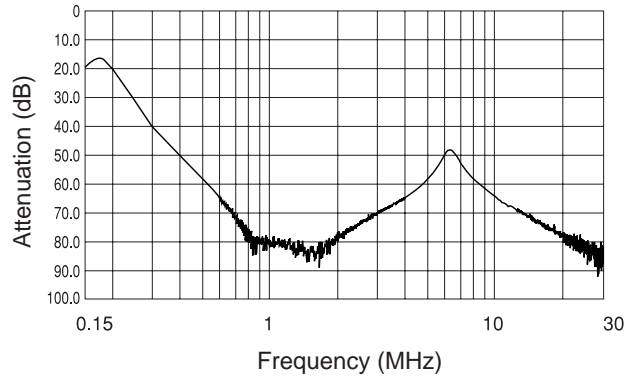
#### MB1210



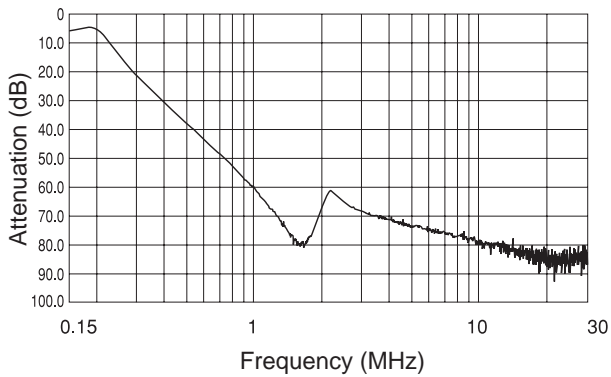
#### MB1216



#### MB1220



#### MB1236



Noise Filter