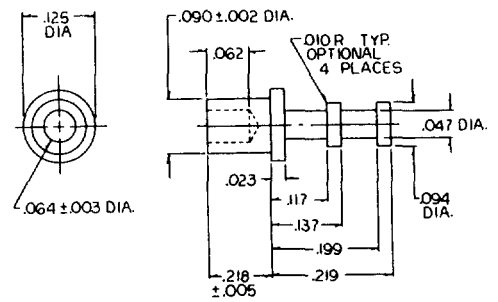
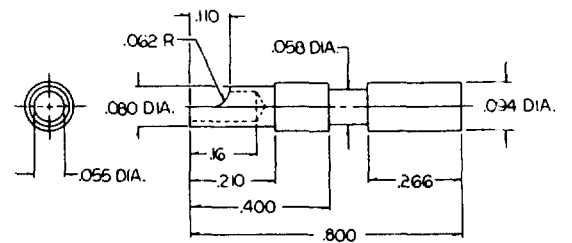




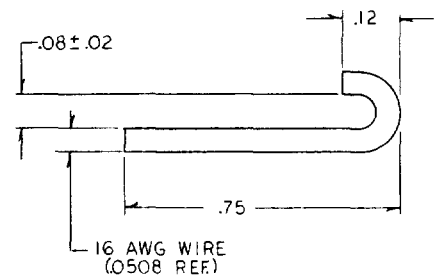
**MS
Terminals**



PART NO. 1558EE



PART NO. 1558S



PART NO. 1273

Standard Plating Suffix to Part Number

See Page 93 for all plating options.

MS
1558 S
1558 EE
1273

Terminal

-33 (Au over Cu)
-7 (Au over Cu)
-1 (Ag over Cu)
-4 (Sb over Cu)

TOLERANCE: .xxx ±.010 .xx ±.016 (ALL DIMS. BEFORE PLATING)