

AMPHENOL PART NUMBER CONFIGURATION:

U65 - X XX - X X 8 XXX

REVISIONS				
SYM	ZONE	ECN, ERN NO.	DATE	APPRD.
B		PROPOSAL	APR16/10	Z.L.

THIS IS A CAD DRAWING. DO NOT MANUALLY REVISE.

INFINITY
RECEPTACLE

STYLE

- B = R/A SMT, 2 LOCATION POSTS AND SOLDER POSTS
- E = R/A SMT, 2 LOCATING POSTS AND SCREW MOUNT HOLES

CONNECTOR TYPE

- 04 = 4X
- 12 = 12X

PLATING

- 1 = 50µ" GOLD
- 2 = 30µ" GOLD
- 3 = GOLD FLASH OVER PALLADIUM-NICKEL (LEAD FREE)
- 4 = 50µ" GOLD (RoHS COMPLIANT)
- 5 = 30µ" GOLD (RoHS COMPLIANT)
- B = 50µ" GOLD (RoHS COMPLIANT)
- C = 30µ" GOLD (RoHS COMPLIANT)

JACK SCREW OPTION

- 0 = SHIPPED LOOSE (REGULAR SCREW)
- 1 = SHIPPED LOOSE (SELF-LOCKING SCREW)
- 2 = NO JACK SCREW (ORDER SEPERATELY)

PACKAGING/SPECIAL

- NO DIGIT = TRAY PACKAGING NO REAR COVER
- C = TRAY PACKAGING WITH REAR COVER (SHIPPED LOOSE)
- T = TAPE & REEL PACKAGING NO REAR COVER
- CT = TAPE & REEL PACKAGING WITH REAR COVER (SHIPPED LOOSE)

KEYING OPTION

- 0 = NO KEYING (STD)
- 1 = KEYING 1, 3 & 7
- 2 = KEYING 1, 4 & 6
- 3 = KEYING 2, 4 & 5
- 4 = KEYING 2, 6 & 7
- 5 = KEYING 3, 5 & 6

MOUNTING STYLE

- SCREW LOCK, 4 SOLDER POSTS OR 4 MOUNTING HOLES

1. MATERIAL:

PLASTIC HOUSING:

HIGH TEMPERATURE RESISTANT NYLON, FLAMMABILITY RATING UL94V-0.

CONTACTS:

PHOSPHOR BRONZE

PLATING OPTION 1 OR 2 (50µ" OR 30µ" GOLD): 50µ" [1.27 µm] OR 30µ" [0.76 µm] MIN. GOLD OVER 50µ" [1.27 µm] MIN. NICKEL ON CONTACT MATING SURFACES. 150µ" [3.81 µm] MIN. TIN-LEAD (90/10) OVER 50µ" [1.27 µm] NICKEL ON CONTACT TAILS.

PLATING OPTION 3 (GOLD FLASH OVER PALLADIUM-NICKEL): 2µ" [0.05 µm] MIN. GOLD OVER 25µ" [0.635 µm] MIN. PALLADIUM-NICKEL ON CONTACT MATING SURFACES. 0.3µ" [0.007 µm] MIN. GOLD OVER 1.2µ" [0.03 µm] MIN. PALLADIUM-NICKEL ON CONTACT TAILS. 50µ" [1.27 µm] MIN. NICKEL UNDER PLATING.

PLATING OPTION 4 OR 5 (RoHS) (50µ" OR 30µ" GOLD): 50µ" [1.27 µm] OR 30µ" [0.76 µm] MIN. GOLD OVER 50µ" [1.27 µm] MIN. NICKEL ON CONTACT MATING SURFACES. 2µ" [0.05 µm] MIN. GOLD OVER 50µ" [1.27 µm] MIN. NICKEL ON CONTACT TAILS.

PLATING OPTION B OR C (RoHS) (50µ" OR 30µ" GOLD): 50µ" [1.27 µm] OR 30µ" [0.76 µm] MIN. GOLD OVER 50µ" [1.27 µm] MIN. NICKEL ON CONTACT MATING SURFACES. 100-150µ" [2.54-3.81 µm] MATTE TIN OVER 50µ" [1.27 µm] MIN. NICKEL ON CONTACT TAILS.

METAL SHELL: DIE CASTING ALLOY

PLATING: 100µ" [2.54 µm] MIN. NICKEL OVER COPPER UNDER LAYER

GASKET: STAINLESS STEEL

JACK SCREW: STEEL

PLATING: 100µ" [2.54 µm] MIN. NICKEL OVER ALL

RECOMMENDED TORQUE: 4-4.5 IN-LBS.

2. TEMPERATURE RANGE:

-40°C TO +85°C

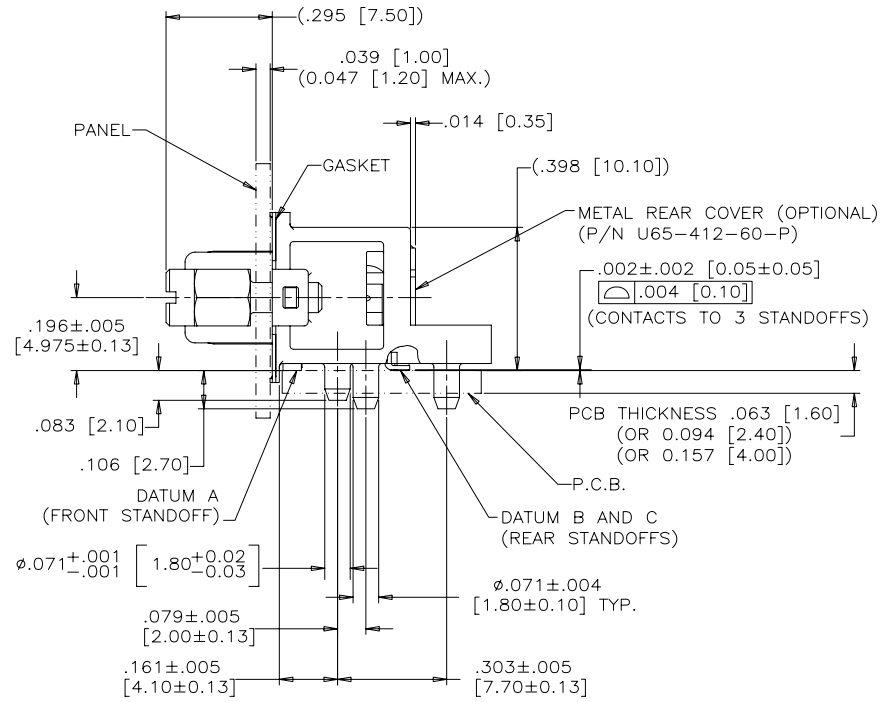
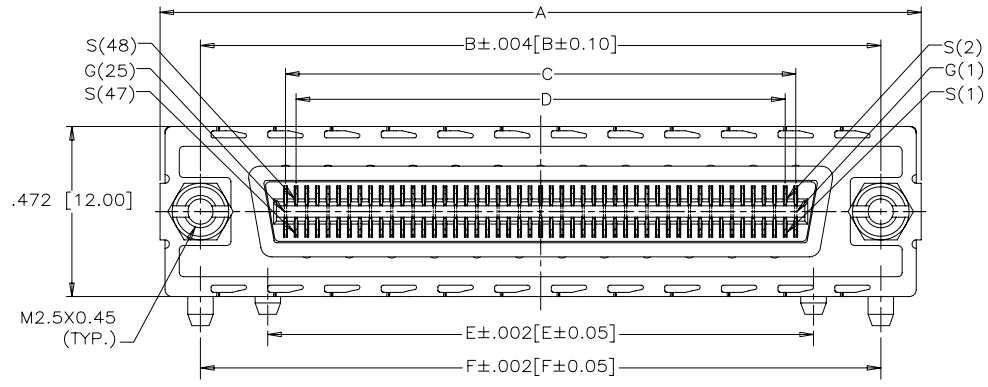
DRAWN	M.D.LONG	DATE	2005/04/28
DESIGNED			
CHECKED	J.SI	DATE	2005/04/28
I. E. APPRD.			
Q. A. APPRD.			
DWG. APPRD.			
ENG. REL. NO.			
REF.			
DIMENSIONS ARE IN		CODE ID. NO.	03554
INCHES [mm]			

Amphenol Canada Corp.			
TITLE			
INFINITY 4X/12X RECEPTACLE, SCREW LOCK STYLE, FIXED BOARD, RIGHT ANGLE SMT			
DWG	DRAWING NO.	REV.	
A	P-U65-XXX-XX8XXX	B	
SCALE	2/1	WT.	-----
SURF.	-----	SHEET	1 OF 4

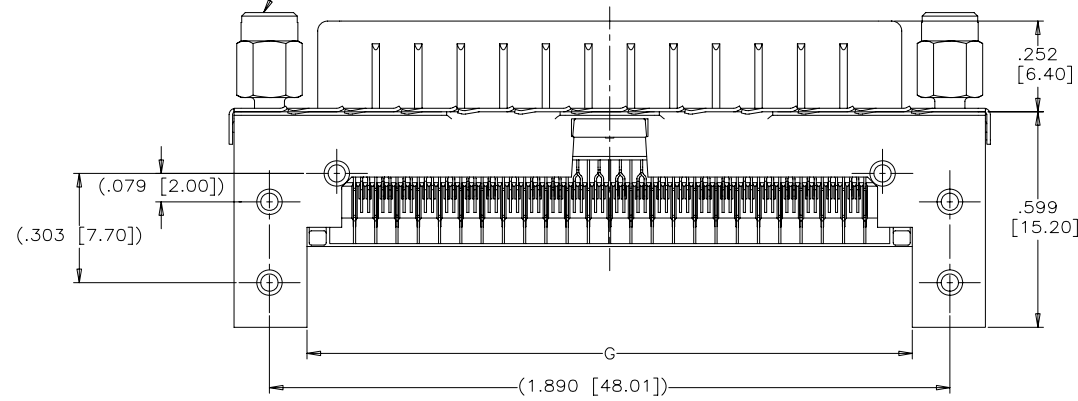
THIS DOCUMENT CONTAINS PROPRIETARY INFORMATION AND SUCH INFORMATION MAY NOT BE DISCLOSED TO OTHERS FOR ANY PURPOSE OR USED FOR MANUFACTURING PURPOSES WITHOUT WRITTEN PERMISSION FROM AMPHENOL CANADA CORP.

REVISIONS				
SYM	ZONE	ECN, ERN NO.	DATE	APPRD.
B		PROPOSAL	APR16/10	Z.L.

THIS IS A CAD DRAWING. DO NOT MANUALLY REVISE.



JACK SCREWS (SHIP LOOSE)
(U65-404-40-P, REGULAR SCREW,
U65-404-41-P, SELF-LOCKING SCREW)
RECCOMENDED TORQUE: 4-4.5 IN-LBS.



PART NUMBER	U65-B04-XXE0XX	U65-B12-XXE0XX
A	1.169 [29.70]	2.114 [53.70]
B	.945 [24.00]	1.890 [48.00]
C	.472 [12.00]	1.417 [36.00]
D	.413 [10.50]	1.358 [34.50]
E	.571 [14.50]	1.516 [38.50]
F	.945 [24.00]	1.890 [48.00]
G	.736 [18.70]	1.681 [42.70]
H	1.063 [27.00]	2.008 [51.00]
K	.776 [19.70]	1.720 [43.70]
m	m = 1 - 8	m = 1 - 24
n	n = 1 - 9	n = 1 - 25

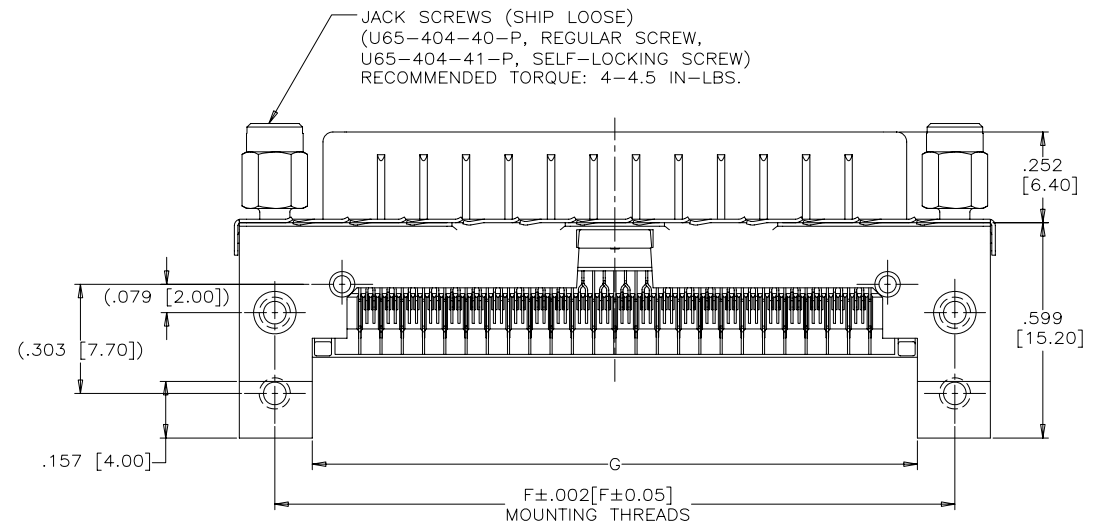
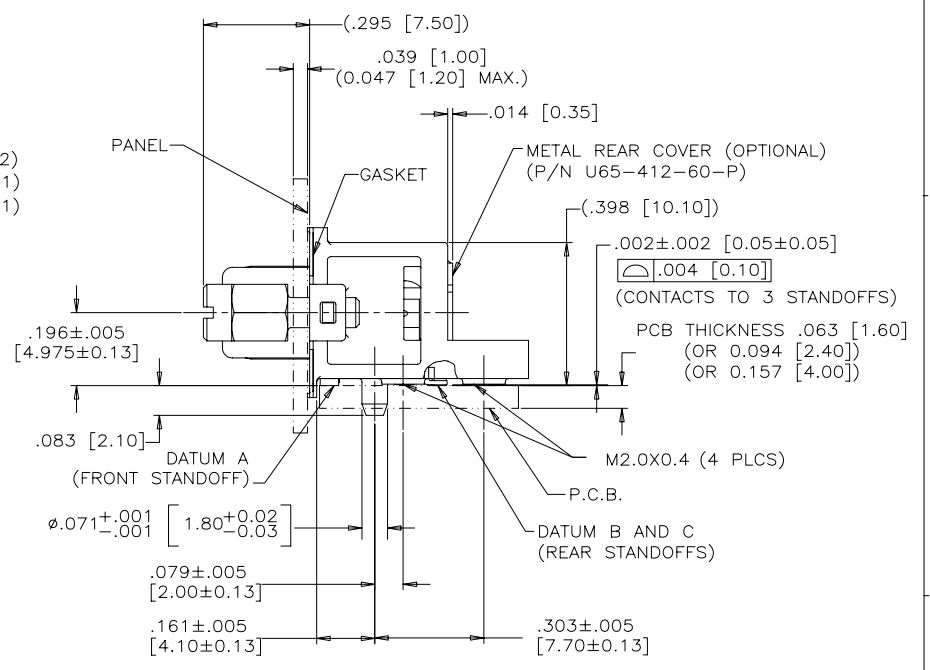
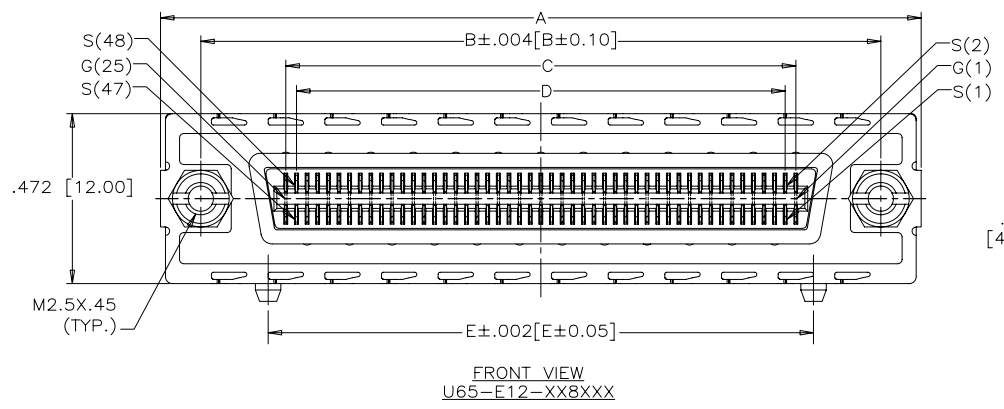
** REFER TO [mm] AS PRIMARY DIMENSIONS.

DRAWN	M.LONG	DATE	2005/04/28	Amphenol Canada Corp.	
DESIGNED					
CHECKED	J.SI	DATE	2005/04/28	TITLE	
I. E. APPRD.					
Q. A. APPRD.				INFINITY 4X/12X RECEPTACLE, SCREW LOCK STYLE, FIXED BOARD, RIGHT ANGLE SMT	
DWG. APPRD.					
ENG. REL. NO.				DWG	DRAWING NO.
REF.				A	P-U65-XXX-XX8XXX
DIMENSIONS ARE IN	CODE ID. NO.			SCALE	WT.
INCHES [mm]	03554			2/1	-----
					SURF. -----
					SHEET 2 OF 4

THIS DOCUMENT CONTAINS PROPRIETARY INFORMATION AND SUCH INFORMATION
MAY NOT BE DISCLOSED TO OTHERS FOR ANY PURPOSE OR USED FOR MANUFACTURING
PURPOSES WITHOUT WRITTEN PERMISSION FROM AMPHENOL CANADA CORP.

REVISIONS				
SYM	ZONE	ECN, ERN NO.	DATE	APPRD.
B		PROPOSAL	APR16/10	Z.L.

THIS IS A CAD DRAWING. DO NOT MANUALLY REVISE.



** REFER TO [mm] AS PRIMARY DIMENSIONS.

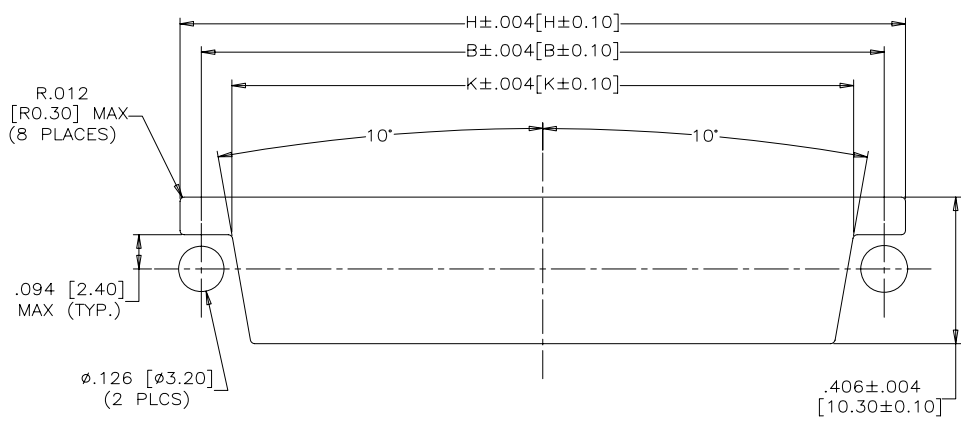
DRAWN	M.LONG	DATE	2005/04/28	Amphenol Canada Corp.	
DESIGNED					
CHECKED	J.SI	DATE	2005/04/28	TITLE INFINITY 4X/12X RECEPTACLE, SCREW LOCK STYLE, FIXED BOARD, RIGHT ANGLE SMT	
I. E. APPRD.					
Q. A. APPRD.					
DWG. APPRD.					
ENG. REL. NO.				DWG	DRAWING NO.
REF.				A	P-U65-XXX-XX8XXX
DIMENSIONS ARE IN	INCHES [mm]	CODE ID. NO.	03554	SCALE	2/1
				WT.	-----
				SURF.	-----
				SHEET 3 OF 4	

THIS DOCUMENT CONTAINS PROPRIETARY INFORMATION AND SUCH INFORMATION MAY NOT BE DISCLOSED TO OTHERS FOR ANY PURPOSE OR USED FOR MANUFACTURING PURPOSES WITHOUT WRITTEN PERMISSION FROM AMPHENOL CANADA CORP.

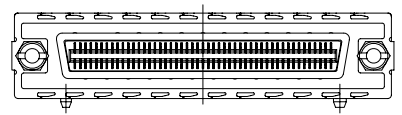
A B C D E F

REVISIONS				
SYM	ZONE	ECN, ERN NO.	DATE	APPRD.
B		PROPOSAL	APR16/10	Z.L.

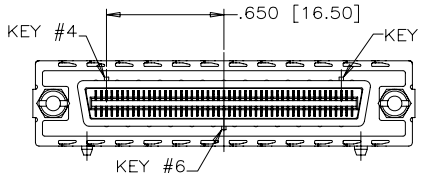
THIS IS A CAD DRAWING. DO NOT MANUALLY REVISE.



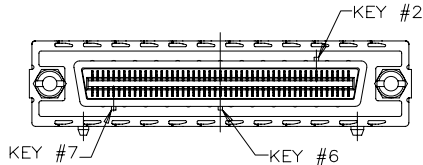
RECOMMENDED PANEL CUTOUT



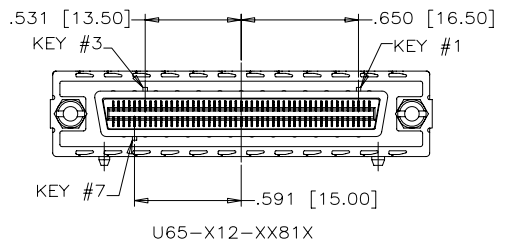
U65-X12-XX80X



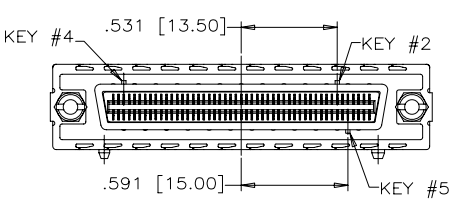
U65-X12-XX82X



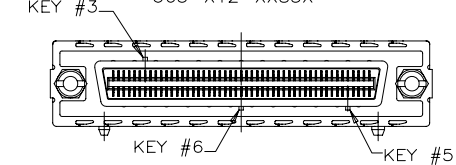
U65-X12-XX84X



U65-X12-XX81X

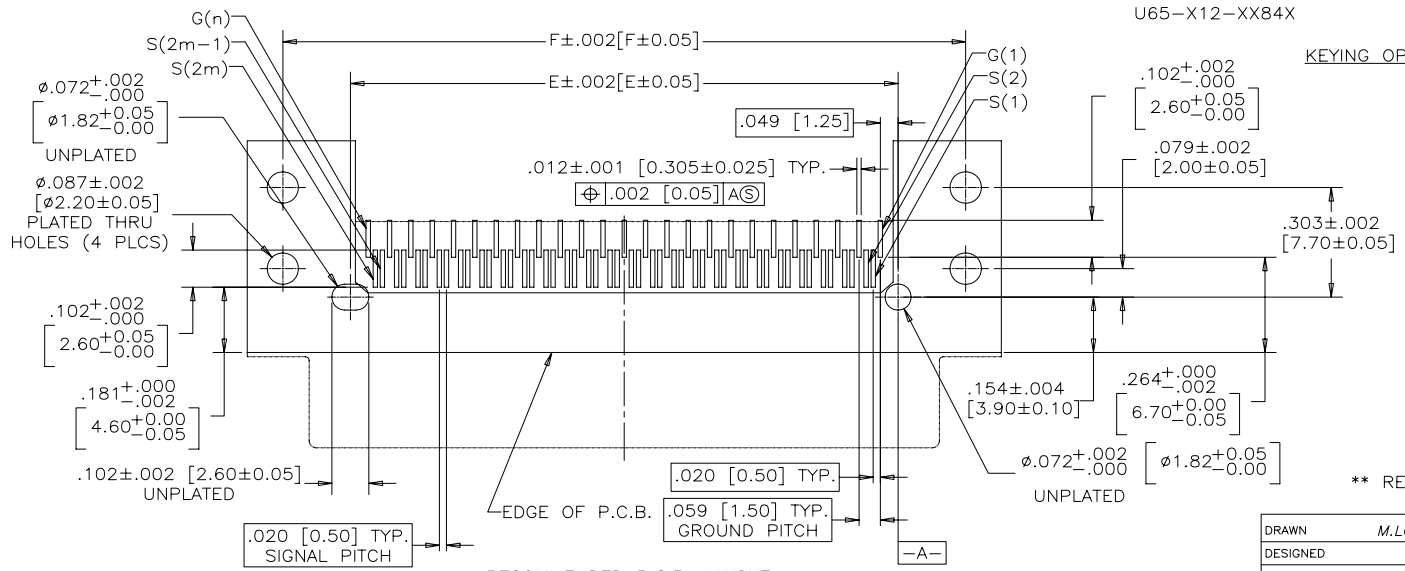


U65-X12-XX83X



U65-X12-XX85X

KEYING OPTIONS AND LOCATION



RECOMMENDED P.C.B. LAYOUT (COMPONENTS SIDE OF BOARD)

** REFER TO [mm] AS PRIMARY DIMENSIONS.

DRAWN	M.LONG	DATE	2005/04/28
DESIGNED			
CHECKED	J.SI	DATE	2005/04/28
I. E. APPRD.			
Q. A. APPRD.			
DWG. APPRD.			
ENG. REL. NO.			
REF.			
DIMENSIONS ARE IN	CODE ID. NO.		
INCHES [mm]	03554		

Amphenol Canada Corp.

TITLE
INFINITY 12X RECEPTACLE, SCREW LOCK STYLE, FIXED BOARD, RIGHT ANGLE SMT

DWG A DRAWING NO. P-U65-XXX-XX8XXX REV. B

SCALE 2/1 WT. SURF. SHEET 4 OF 4

THIS DOCUMENT CONTAINS PROPRIETARY INFORMATION AND SUCH INFORMATION MAY NOT BE DISCLOSED TO OTHERS FOR ANY PURPOSE OR USED FOR MANUFACTURING PURPOSES WITHOUT WRITTEN PERMISSION FROM AMPHENOL CANADA CORP.

A B C D E F