

# Coaxial Frequency Mixer

## ZAD-1H+ ZAD-1H

Level 17 (LO Power +17 dBm) 0.5 to 500 MHz



### Maximum Ratings

Operating Temperature	-55°C to 100°C
Storage Temperature	-55°C to 100°C
RF Power	200mW
IF Current	40mA

### Coaxial Connections

LO	1
RF	3
IF	2

### Features

- low conversion loss, 6.16 dB typ.
- good L-R isolation, 45 dB typ., L-I, 40 dB typ.
- rugged shielded case

### Applications

- VHF/UHF
- instrumentation

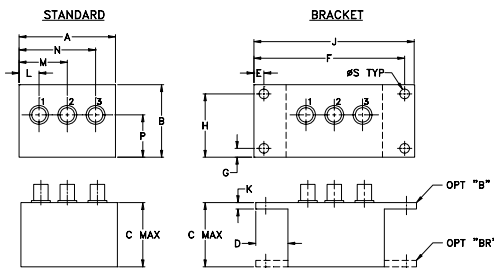
CASE STYLE: M22

Connectors	Model	Price	Qty.
BNC	ZAD-1H(+)	\$48.95 ea.	(1-9)
BRACKET (OPTION "B")		\$5.00	(1+)
BRACKET (OPTION "BR")		\$1.50	(1+)

+ RoHS compliant in accordance with EU Directive (2002/95/EC)

The +Suffix identifies RoHS Compliance. See our web site for RoHS Compliance methodologies and qualifications.

### Outline Drawing



### Outline Dimensions (inch/mm)

A	B	C	D	E	F	G	H
2.25	1.38	1.24	.50	.150	3.100	.138	1.238
57.15	35.05	31.50	12.70	3.81	78.74	3.51	31.45

J	K	L	M	N	P	S	wt
3.25	.10	.40	1.15	1.86	.64	.150	grams
82.55	2.54	10.16	29.21	47.24	16.26	3.81	74.0

### Electrical Specifications

FREQUENCY (MHz)	CONVERSION LOSS (dB)	LO-RF ISOLATION (dB)						LO-IF ISOLATION (dB)									
		L		M		U		L		M		U					
0.5-500	DC-500	6.16	0.08	7.5	8.5	50	45	45	30	35	25	45	35	40	30	30	20

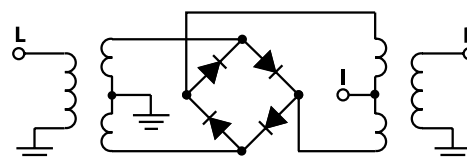
1 dB COMP.: +10 dBm typ.

L = low range [ $f_L$  to  $10 f_L$ ] M = mid range [ $10 f_L$  to  $f_U/2$ ] U = upper range [ $f_U/2$  to  $f_U$ ]  
m = mid band [ $2f_L$  to  $f_U/2$ ]

### Typical Performance Data

Frequency (MHz)		Conversion Loss (dB)	Isolation L-R (dB)	Isolation L-I (dB)	VSWR RF Port (:1)	VSWR LO Port (:1)
RF	LO	LO +17dBm	LO +17dBm	LO +17dBm	LO +17dBm	LO +17dBm
0.50	30.50	7.38	64.73	58.33	1.26	2.93
2.00	32.00	6.29	62.80	57.04	1.13	2.80
10.00	40.00	5.89	58.80	53.94	1.08	2.61
20.00	50.00	5.93	51.76	47.62	1.09	2.57
50.00	80.00	5.91	48.13	44.45	1.10	2.57
81.07	51.07	5.84	43.91	40.75	1.12	2.72
100.00	70.00	5.82	42.51	39.43	1.12	2.57
129.40	99.40	5.85	41.76	38.65	1.14	2.45
161.63	131.63	5.90	39.94	37.09	1.16	2.59
193.86	163.86	5.98	38.70	35.65	1.17	2.39
226.08	196.08	6.10	38.27	35.36	1.18	2.34
258.31	228.31	6.01	37.16	34.23	1.24	2.56
274.42	244.42	5.97	36.62	33.23	1.26	2.43
306.65	276.65	6.07	35.81	32.42	1.26	2.47
338.87	308.87	6.16	34.78	30.96	1.33	2.54
371.10	341.10	6.34	33.92	29.51	1.34	2.45
403.33	373.33	6.42	33.83	28.51	1.36	2.59
435.55	405.55	6.60	34.53	28.16	1.39	2.55
467.78	437.78	6.76	35.55	28.51	1.40	2.52
500.00	470.00	6.85	34.97	28.71	1.42	2.52

### Electrical Schematic



**Mini-Circuits**  
ISO 9001 ISO 14001 CERTIFIED

ALL NEW  
minicircuits.com

P.O. Box 350166, Brooklyn, New York 11235-0003 (718) 934-4500 Fax (718) 332-4661 For detailed performance specs & shopping online see Mini-Circuits web site



The Design Engineers Search Engine Provides ACTUAL Data Instantly From MINI-CIRCUITS At: [www.minicircuits.com](http://www.minicircuits.com)

RF/IF MICROWAVE COMPONENTS

REV. A  
M98898  
ZAD-1H+  
DJ/TD/CP  
070319  
Page 1 of 2

## Performance Charts

