



F1T1 THRU F1T7

1.0 AMP. Fast Recovery Rectifiers

	Voltage Range 50 to 1000 Volts Current 1.0 Ampere
--	--

<p>Features</p> <ul style="list-style-type: none"> ✧ Low forward voltage drop ✧ High current capability ✧ High reliability ✧ High surge current capability <p>Mechanical Data</p> <ul style="list-style-type: none"> ✧ Cases: Molded plastic ✧ Epoxy: UL 94V-0 rate flame retardant ✧ Lead: Axial leads, solderable per MIL-STD-202, Method 208 guaranteed ✧ Polarity: Color band denotes cathode end ✧ High temperature soldering guaranteed: 260°C/10 seconds/.375", (9.5mm) lead lengths at 5 lbs., (2.3kg) tension ✧ Weight: 0.20 gram 	<p>TS-1</p> <p style="text-align: center;">Dimensions in inches and (millimeters)</p>
--	---

Maximum Ratings and Electrical Characteristics

Rating at 25°C ambient temperature unless otherwise specified.

Single phase, half wave, 60 Hz, resistive or inductive load.

For capacitive load, derate current by 20%

Type Number	Symbol	F1T1	F1T2	F1T3	F1T4	F1T5	F1T6	F1T7	Units
Maximum Recurrent Peak Reverse Voltage	V_{RRM}	50	100	200	400	600	800	1000	V
Maximum RMS Voltage	V_{RMS}	35	70	140	280	420	560	700	V
Maximum DC Blocking Voltage	V_{DC}	50	100	200	400	600	800	1000	V
Maximum Average Forward Rectified Current .375" (9.5mm) Lead Length @ $T_A = 55^\circ C$	$I_{(AV)}$	1.0							A
Peak Forward Surge Current, 8.3 ms Single Half Sine-wave Superimposed on Rated Load (JEDEC method)	I_{FSM}	30							A
Maximum Instantaneous Forward Voltage @ 1.0A	V_F	1.2							V
Maximum DC Reverse Current @ $T_A = 25^\circ C$ at Rated DC Blocking Voltage @ $T_A = 100^\circ C$	I_R	5.0 100							μA μA
Maximum Reverse Recovery Time (Note 1)	T_{rr}	150				250	500		nS
Typical Junction Capacitance (Note 2)	C_j	10							pF
Typical Thermal Resistance (Note 3)	$R_{\theta JA}$	100							$^\circ C/W$
Operating Temperature Range	T_J	-65 to +150							$^\circ C$
Storage Temperature Range	T_{STG}	-65 to +150							$^\circ C$

- Notes: 1. Reverse Recovery Test Conditions: $I_F = 0.5A$, $I_R = 1.0A$, $I_{RR} = 0.25A$
 2. Measured at 1 MHz and Applied Reverse Voltage of 4.0 Volts D.C.
 3. Mount on Cu-Pad Size 5mm x 5mm on P.C.B.

RATINGS AND CHARACTERISTIC CURVES (F1T1 THRU F1T7)

FIG.1- MAXIMUM TYPICAL FORWARD CURRENT DERATING CURVE

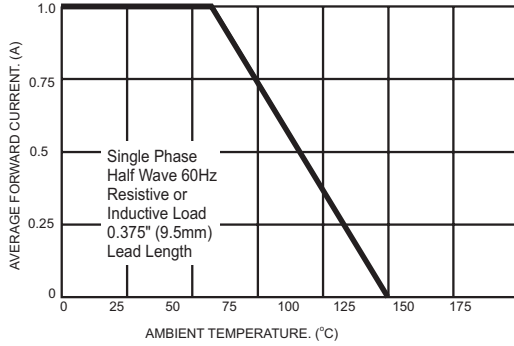


FIG.2- MAXIMUM NON-REPETITIVE FORWARD SURGE CURRENT

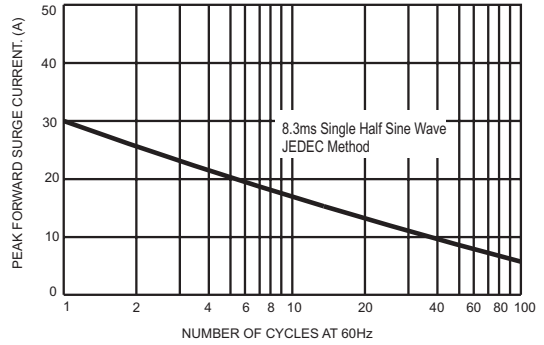


FIG.3- TYPICAL FORWARD CHARACTERISTICS

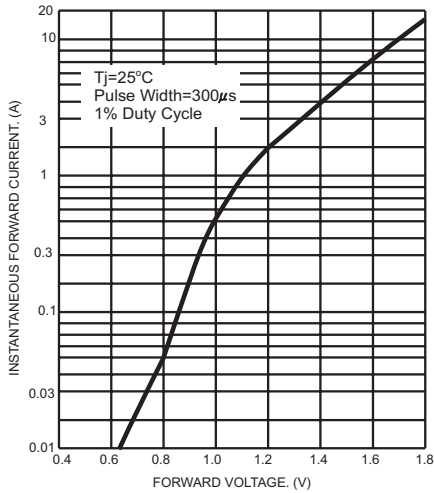


FIG.4- TYPICAL JUNCTION CAPACITANCE

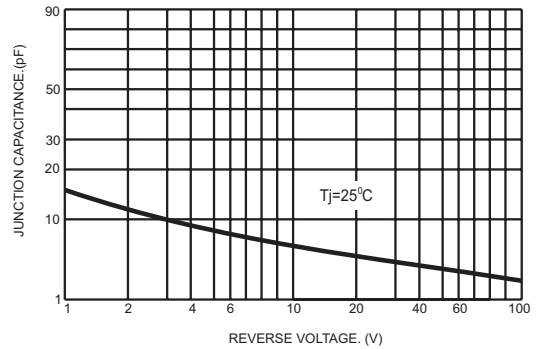
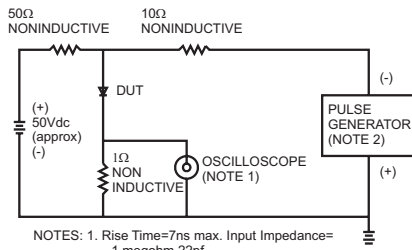


FIG.5- REVERSE RECOVERY TIME CHARACTERISTIC AND TEST CIRCUIT DIAGRAM



- NOTES: 1. Rise Time=7ns max. Input Impedance=1 megohm 22pf
2. Rise Time=10ns max. Source Impedance=50 ohms

