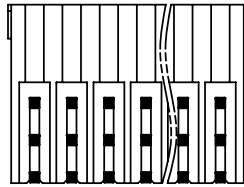
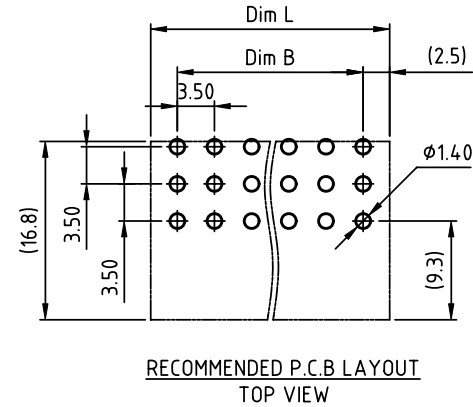
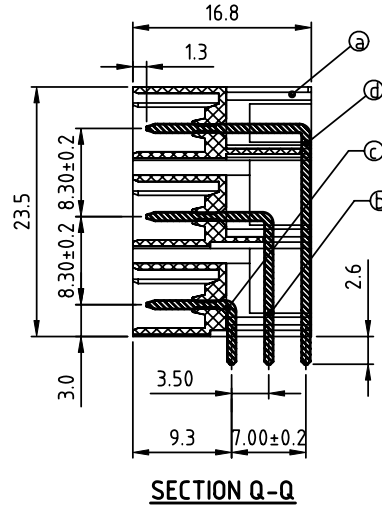
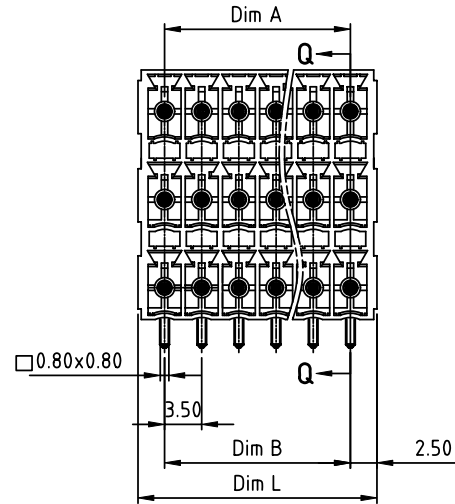


PRODUCT NUMBER	PITCH
K3xx11x1A0J0G	3.50 mm



- Material:
- Item ① Terminal(housing):Thermoplastic(UL94V-0)
 - Item ② Pin1: copper Tin plated
 - Item ③ Pin2: copper Tin plated
 - Item ④ Pin3: copper Tin plated
- Electrical: cULus
- Voltage rating: 160V
 - Current rating: 5.5A
 - Withstanding Voltage: 1.32 KV
 - Operating temperature: -40°C to +115°C
 - Soldering temperature: 260°C ±5°C/5 Sec
 - Safety Approval:

DIMENSION

Dim L	(N/3-1) × 3.5+5.0
Dim A	(N/3-1) × 3.5
Dim B	(N/3-1) × 3.5

N=Number of poles

POLES	Tolerance
3×2P-3×6P	±0.15
3×7P-3×12P	±0.20
3×13P-3×18P	±0.25
3×19p-3×24p	±0.30

PART NO.: K3 xx 1 1 x 1 A0J0 G

- | | | | | |
|---|--------------|---|-------------------|--|
| ↓ | Solid block | 0 | Black (RAL9005) | RoHS compliant (lead<4%) In copper Alloy |
| ↓ | No. of poles | 2 | Red (RAL3001/D) | |
| ↓ | 06 3x2poles | 3 | Orange(RAL2011/P) | |
| ↓ | 09 3x3poles | 4 | Yellow(RAL1018/A) | |
| ↓ | ... | 5 | Green(RAL6018/T) | |
| ↓ | 72 3x24poles | 6 | Blue (RAL5015/A) | |
| | | 8 | Grey(RAL7035/D) | |
| | | 9 | White(RAL1102) | |
| | | C | Green(RAL6018/U) | |

mat'l. code		surface ASME Y14.5	tolerance ASME Y14.5	projection	product family
ltr	ecn no	dr	date	MM	TERMINAL BLOCK
				scale	title
					TERMINAL BLOCK
					PLUGGABLE SOCKET,WITHOUT FLANGE,RIGHT ANGLE
					dwg no
					sheet 1 of 1
					size
					A4
					type
					CUSTOMER Drawing
sheet index	revision	A			
	sheet	1			