

LED Mini-mold Lamps

T-41-21

SHARP ELEK/ MELEC DIV

10E D 8180798 0000459 6

LED Mini-mold Lamps Line-up

Radiation shape (mm)	Lens type				PR Red	TR Red (HL)* ¹	HD Red	HS Sunset orange	HY Yellow	PY Lemon yellow	EG Yellow-green (HL)* ¹	NG Yellow-green	PG Green	Outline dimensions (Fig.)
	Colored diffusion	Colored transparency	Colorless transparency	Milky diffusion										
2φ	●				GL1PR11	GL1TR11	GL1HD11	GL1HS11	GL1HY11	GL1PY11	GL1EG11	GL1NG11	GL1PG11	1
			●		GL1PR21	GL1TR21	GL1HD21	GL1HS21	GL1HY21		GL1EG21	GL1NG21	GL1PG21	
	●				GL1PR111		GL1HD111	GL1HS111	GL1HY111		GL1EG111	GL1NG111	GL1PG111	2
			●		GL1PR211		GL1HD211	GL1HS211	GL1HY211		GL1EG211	GL1NG211	GL1PG211	
	●				GL1PR112		GL1HD112	GL1HS112	GL1HY112		GL1EG112	GL1NG112	GL1PG112	3
			●		GL1PR212		GL1HD212	GL1HS212	GL1HY212		GL1EG212	GL1NG212	GL1PG212	
	●				LT1P11A	LT1T11A	LT1D11A	LT1S11A	LT1H11A	LT1Y11A	LT1E11A	LT1N11A	LT1G11A	1* ²
			●		LT1P21A	LT1T21A	LT1D21A	LT1S21A	LT1H21A		LT1E21A	LT1N21A	LT1G21A	

Absolute Maximum Ratings

(Ta=25°C)

Series	Power dissipation P (mW)	Continuous forward current I _F (mA)	Peak forward current* ³ I _{FM} (mA)	Derating factor		Reverse voltage V _R (V)	Operating temperature Topr (°C)	Storage temperature Tstg (°C)
				DC (mA/°C)	Pulse (mA/°C)			
PR	23	10	50	0.13	0.67	5	-25~+85	-25~+100
TR	66	30	50	0.40	0.67	5	-25~+85	-25~+100
HD	85	30	50	0.40	0.67	5	-25~+85	-25~+100
HS	85	30	50	0.40	0.67	5	-25~+85	-25~+100
HY	50	20	50	0.27	0.67	5	-25~+85	-25~+100
PY	50	20	50	0.27	0.67	5	-25~+85	-25~+100
EG	50	20	50	0.27	0.67	5	-25~+85	-25~+100
NG	50	20	50	0.27	0.67	5	-25~+85	-25~+100
PG	50	20	50	0.27	0.67	5	-25~+85	-25~+100

Electro-optical Characteristics

(Ta=25°C)

Series	Forward voltage V _F (V)		Peak emission wavelength λ _P (nm)	Spectrum radiation bandwidth Δλ (nm)	Conditions I _F (mA)	Reverse current I _R (μA)		Terminal capacitance* ⁴ Ct (pF)
	TYP	MAX				MAX	Conditions V _R (V)	
			TYP	TYP				TYP
PR	1.9	2.3	695	100	5	10	4	55
TR	1.75	2.2	660	20	20	10	4	30
HD	2.0	2.8	635	35	20	10	4	20
HS	2.0	2.8	610	35	20	10	4	15
HY	1.9	2.5	585	30	10	10	4	35
PY	1.95	2.5	568	30	10	10	4	35
EG	1.95	2.5	565	30	10	10	4	35
NG	1.95	2.5	565	30	10	10	4	35
PG	1.95	2.5	555	25	10	10	4	40

*¹ HL: High-luminosity

*² Taping type: Tape width 38mm, 2,000pcs/tape

*³ Duty ratio 1/10, Pulse width 0.1ms

*⁴ V = 0V, f = 1MHz

LED Mini-mold Lamps

SHARP ELEK/ MELEC DIV

T-41-21

10E D

8180798 0000460 2

LED Mini-mold Lamps Luminous Intensity

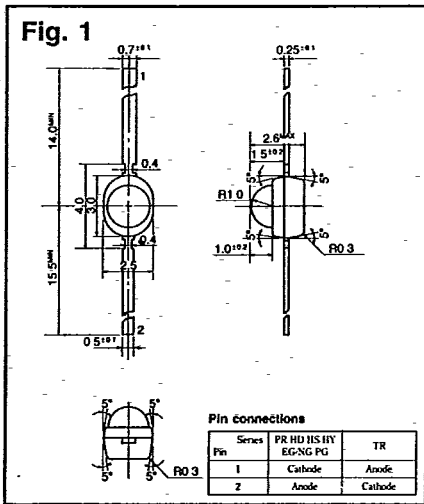
(Note) □□ and □ indicate radiation color symbol. (Ta=25°C)

Radiation shape (mm)	Radiation color Series	PR Red		TR Red (HL)*		HD Red		HS Sunset orange		HY Yellow		PY Lemon-yellow		EG Yellow-green (HL)*		NG Yellow-green		PG Green	
		MIN	TYP	MIN	TYP	MIN	TYP	MIN	TYP	MIN	TYP	MIN	TYP	MIN	TYP	MIN	TYP	MIN	TYP
		Iv (mcd)																	
2φ	GL1□□11	1.0	2.6	6.0	12.0	4.2	8.8	4.0	10.0	1.7	4.5	2.2	4.3	2.2	4.3	1.8	2.5	0.65	1.6
	GL1□□21	1.0	2.6	10.0	19.0	6.8	14.4	4.0	10.0	1.7	4.5	—	—	4.0	8.0	2.5	4.3	0.8	2.0
	GL1□□111	1.0	2.6	—	—	4.2	8.8	4.0	10.0	1.7	4.5	—	—	2.2	4.3	1.8	2.5	0.65	1.6
	GL1□□211	1.0	2.6	—	—	6.8	14.4	4.0	10.0	1.7	4.5	—	—	4.0	8.0	2.5	4.3	0.8	2.0
	GL1□□112	1.0	2.6	—	—	4.2	8.8	4.0	10.0	1.7	4.5	—	—	2.2	4.3	1.8	2.5	0.65	1.6
	GL1□□212	1.0	2.6	—	—	6.8	14.4	4.0	10.0	1.7	4.5	—	—	4.0	8.0	2.5	4.3	0.8	2.0
	LT1□11A	1.0	2.6	6.0	12.0	4.2	8.8	4.0	10.0	1.7	4.5	2.2	4.3	2.2	4.3	1.8	2.5	0.65	1.6
	LT1□21A	1.0	2.6	10.0	19.0	6.8	14.4	4.0	10.0	1.7	4.5	—	—	4.0	8.0	2.5	4.3	0.8	2.0

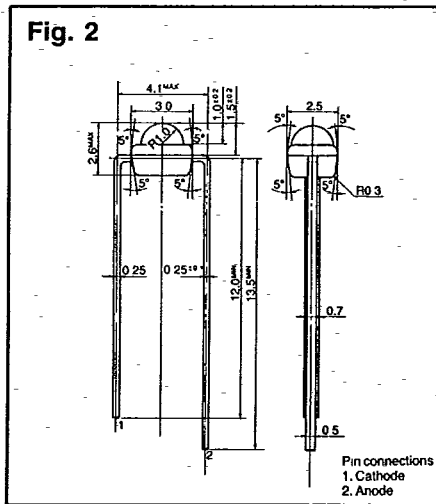
* HL: High-luminosity

Outline Dimensions

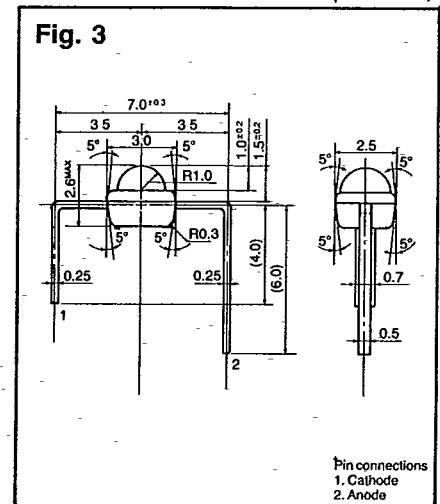
(Unit: mm)



GL1□□11/GL1□□21



GL1□□111/GL1□□211



GL1□□112/GL1□□212

