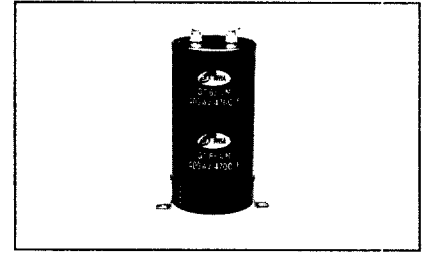


# LARGE ALUMINUM ELECTROLYTIC CAPACITORS

## GT For Inverter Circuits Series

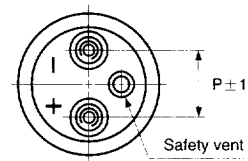
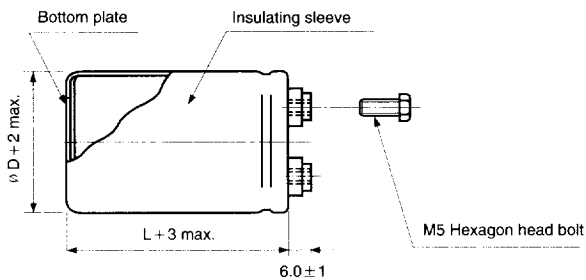
- High reliability
- High ripple current
- Suited for smoothing circuits for general purpose inverters and control circuits for F.A. machines
- Designed for use as input filter capacitor for current U.P.S.



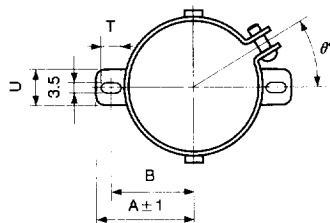
Item	Characteristics	
<b>Operating temperature range</b>	-25 ~ +85°C	
<b>Capacitance tolerance</b>	±20% at 120Hz, 20°C	
<b>Leakage current max.</b>	$I=3\sqrt{CV}$ (μA) (after 5 minutes)	
<b>Dissipation factor</b>	0.25 max. at 120Hz, 20°C	
<b>Load life</b> (after application of the rated voltage for 2000 hours at 85°C)	Leakage current	Less than specified value
	Capacitance change	Within ±20% of initial value
	tanδ	Less than 300% of specified value
<b>Shelf life</b> (after leaving capacitors under no load for 1000 hours at 85°C)	Leakage current	Less than specified value
	Capacitance change	Within ±20% of initial value
	tanδ	Less than 300% of specified value

### ● DRAWING

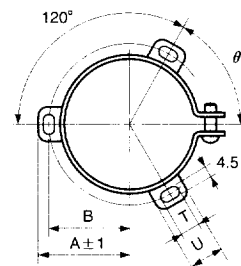
Unit : mm



### ● TWO LEGS ANGLE



### ● THREE LEGS ANGLE



### ● TWO LEGS ANGLE SIZE TABLE

∅ D	B	A	T	U	θ°	P
35	24	29	7	10	30	12.7
51	33.6	39.9	6	14	30	22
63.5	40.8	46.8	6	14	30	28.6

### ● THREE LEGS ANGLE SIZE TABLE

∅ D	B	A	T	U	θ°	P
51	32.9	38.9	7	12	60	22
63.5	38.4	45.3	7	14	60	28.6
76.2	44.5	51.5	8	16	60	31.8
89	50.8	61	8	16	60	31.8

## GT series

### ● DIMENSIONS & MAXIMUM PERMISSIBLE RIPPLE CURRENT

WV Item μF	350			400			450		
	∅ D×L (mm)	Ripple current (A rms)		∅ D×L (mm)	Ripple current (A rms)		∅ D×L (mm)	Ripple current (A rms)	
		40°C 120Hz	85°C 120Hz		40°C 120Hz	85°C 120Hz		40°C 120Hz	85°C 120Hz
180							35 × 60	2.9	1.0
220				35 × 50	3.0	1.1	35 × 60	3.2	1.1
270	35 × 50	3.3	1.2	35 × 50	3.3	1.2	35 × 60	3.6	1.2
330	35 × 50	3.7	1.3	35 × 60	3.9	1.4	35 × 80	4.4	1.5
390	35 × 60	4.3	1.5	35 × 60	4.3	1.5	35 × 80	4.8	1.7
470	35 × 60	4.7	1.6	35 × 80	5.3	1.8	35 × 100	5.8	2.0
560	35 × 80	5.8	2.0	35 × 100	6.3	2.2	35 × 100	6.3	2.2
680	35 × 80	6.4	2.2	35 × 100	7.0	2.4	35 × 120	7.5	2.6
820	35 × 100	7.7	2.7	35 × 120	8.3	2.9	51 × 80	8.0	2.8
1000	35 × 120	9.2	3.2	51 × 80	8.8	3.1	51 × 100	9.6	3.4
1200	51 × 80	9.7	3.4	51 × 80	9.7	3.4	51 × 100	10.6	3.7
1500	51 × 80	10.8	3.8	51 × 100	11.8	4.1	51 × 120	12.7	4.4
1800	51 × 100	12.9	4.5	51 × 120	13.9	4.9	63.5 × 100	13.8	4.8
2200	51 × 120	15.4	5.4	51 × 140	16.4	5.7	63.5 × 120	16.3	5.7
2700	51 × 140	18.2	6.4	63.5 × 120	18.1	6.3	63.5 × 140	19.2	6.7
3300	63.5 × 120	20.0	7.0	63.5 × 140	21.3	7.4	76.2 × 120	20.6	7.2
3900	63.5 × 140	23.1	8.1	63.5 × 160	24.4	8.6	76.2 × 140	23.7	8.3
4700	63.5 × 160	26.8	9.4	76.2 × 140	26.0	9.1	76.2 × 160	27.5	9.6
5600	76.2 × 140	28.4	10.0	76.2 × 160	30.0	10.5	89 × 140	31.3	10.9
6800	76.2 × 160	33.0	11.6	89 × 140	34.5	12.1	89 × 160	36.3	12.7
8200	89 × 140	37.8	13.2	89 × 160	39.8	13.9			
10000	89 × 160	44.0	15.4	89 × 160	44.0	15.4			

### ● PERMISSIBLE RIPPLE CURRENT MULTIPLIERS

Frequency	50Hz	120Hz	300Hz	1kHz	3kHz
Coefficient	0.8	1.0	1.1	1.3	1.4