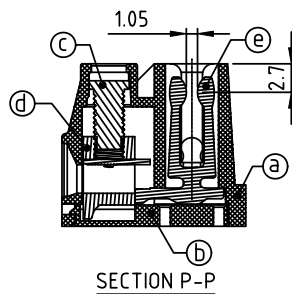
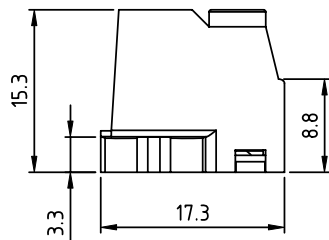
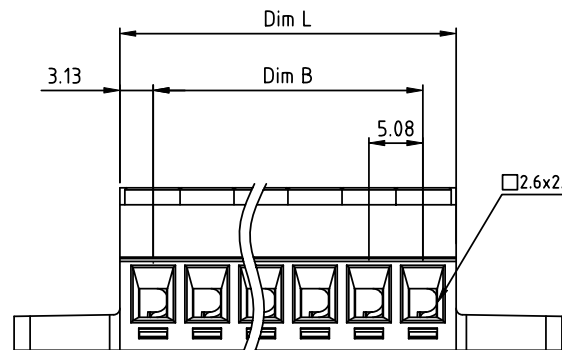
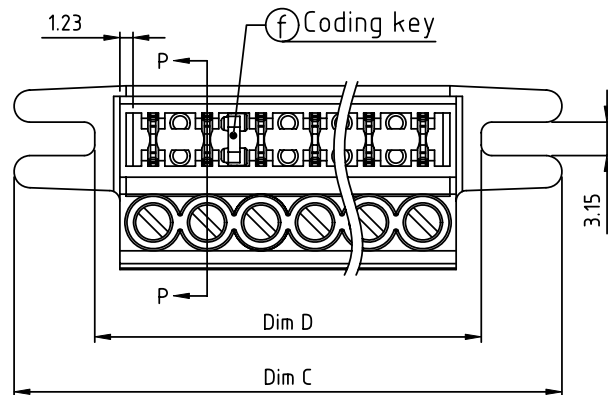


PRODUCT NUMBER	PITCH
K4xx53x000J0G	5.08 mm



Material:

- Item (a) Terminal body: Thermoplastic (UL94V-0)
- Item (b) Terminal cover: Thermoplastic (UL94V-0)
- Item (c) Terminal screw: Steel Zinc plating "-" slot type
- Item (d) Clamp: Zinc alloy, Ni plated
- Item (e) Pin: PhBz, Tin plated
- Item (f) Coding key: PC, Yellow

Electrical cULus

- Voltage rating: 300VAC
- Current rating: 10A
- Solid wire: 14-24 AWG
- Stranded wire: 14-24AWG
- Torque: 4.5 Lb-In
- Screw: M3
- Wire strip length: 6-7mm
- Withstanding Voltage: 1.6KV
- Operating temperature: -40°C to +115°C

N=Number of poles

Dim L	$(N-1) \times 5.08 + 6.26$
Dim B	$(N-1) \times 5.08$
Dim C	$(N-1) \times 5.08 + 26.20$
Dim D	$(N-1) \times 5.08 + 11.0$

Poles	Dim L & B Tol	Dim C & D Tol
3p-6p	±0.15	±0.30
7p-12p	±0.25	±0.50
13p-18p	±0.35	±0.60
19p-24p	±0.40	±0.80

PART NO.: K4 xx 53 x 0 00J0 G

- | | | | |
|--------------|----------|----------------------|--|
| Solid block | 0 | Black (RAL9005) | RoHS compliant
(lead<4%)
In copper Alloy |
| No. of poles | 2 | Red (RAL3001/D) | |
| 03 | 3 poles | 3 Orange (RAL2011/P) | |
| 04 | 4 poles | 4 Yellow (RAL1018/A) | |
| ... | ... | 5 Green (RAL6018/T) | |
| 24 | 24 poles | 6 Blue (RAL5015/A) | |
| | | 8 Grey (RAL7035/D) | |
| | | 9 White (RAL1102) | |
| | | C Green (RAL6018/U) | |

mat'l. code		surface ASME Y14.5 ✓	tolerance ASME Y14.5	projection 	product family TERMINAL BLOCK
ltr	ecn no	dr	date	tolerances unless otherwise specified	title TERMINAL BLOCK PLUGGABLE PLUG, MOUNTING FIXED TYPE
				angles $X \pm 1^\circ$	
				scale MM	dwg no K4xx53x000J0G sheet 1 of 1 size A4
				dr EVIN ZHONG 051214	
				enr EVIN ZHONG 051214	type CUSTOMER Drawing
				chr HANKE FENG 051214	
				appd EVIN ZHONG 051214	
sheet index	revision sheet	A	1		