



10/100 BASE-T SINGLE PORT THROUGH HOLE MAGNETICS

- Meets IEEE 802.3af & ANSI X 3.263
- Thru hole construction
- Many parts are PoE enabled
- Standard operating temp: 0°C to +70°C (see footnote)
- Industrial operating temp: -40°C to +85°C (see footnote)

Electrical Specifications @25°C

Part Number	OCL(uH Min) @100KHz,0.2V With 8mA DC Bias	Turns Ratio (±3%)	Insertion Loss (dB Max) 0.5-100MHz	Return Loss (dB Min)			Cross talk (dB Min)		CMRR (dB Min) 0.5-100MHz	HI-POT (Vrms)
				0.5-30MHz	30.1-60MHz	60.1-80MHz	0.5-40MHz	40.1-100MHz		
AH1201D_	350	1CT:1CT	1.1	18	18-20*log(f/30)	12	35	33-20*log(f/50)	30	1500
AH1202D_	350	1CT:1CT	1.1	18	18-20*log(f/30)	12	35	33-20*log(f/50)	30	1500
AH1203D_	350	1CT:1CT	1.1	18	18-20*log(f/30)	12	35	33-20*log(f/50)	30	1500
AH1204D_	350	1CT:1CT	1.1	18	18-20*log(f/30)	12	35	33-20*log(f/50)	30	1500
AH1205D_	350	1CT:1CT	1.1	18	18-20*log(f/30)	12	35	33-20*log(f/50)	30	1500
AH1206D_	350	1CT:1CT	1.1	18	18-20*log(f/30)	12	35	33-20*log(f/50)	30	1500
AH1207D_	350	1CT:1CT	1.1	18	18-20*log(f/30)	12	35	33-20*log(f/50)	30	1500
AH1208D_	350	1CT:1CT	1.1	18	18-20*log(f/30)	12	35	33-20*log(f/50)	30	1500
AH1209D_	350	1CT:1CT	1.1	18	18-20*log(f/30)	12	35	33-20*log(f/50)	30	1500
AH1210D_	350	1CT:1CT	1.1	18	18-20*log(f/30)	12	35	33-20*log(f/50)	30	1500
AH1211D_	350	1CT:1CT	1.1	18	18-20*log(f/30)	12	35	33-20*log(f/50)	30	1500
AH1213D_	350	1CT:1CT	1.1	18	18-20*log(f/30)	12	35	33-20*log(f/50)	30	1500
AH1215D_	350	1CT:1CT	1.1	18	18-20*log(f/30)	12	35	33-20*log(f/50)	30	1500
AH1216D_	350	1CT:1CT	1.1	18	18-20*log(f/30)	12	35	33-20*log(f/50)	30	1500
AH1217D_	350	1CT:1CT	1.1	18	18-20*log(f/30)	12	35	33-20*log(f/50)	30	1500
AH1218D_	350	1CT:1CT	1.1	18	18-20*log(f/30)	12	35	33-20*log(f/50)	30	1500
AH1219D_	350	1CT:1CT	1.1	18	18-20*log(f/30)	12	35	33-20*log(f/50)	30	1500
AH1220D_	350	1CT:1CT	1.1	18	18-20*log(f/30)	12	35	33-20*log(f/50)	30	1500
AH1221D_	350	1CT:1CT	1.1	18	18-20*log(f/30)	12	35	33-20*log(f/50)	30	1500
AH1222D_	350	1CT:1CT	1.1	18	18-20*log(f/30)	12	35	33-20*log(f/50)	30	1500

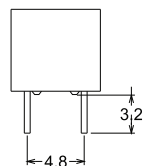
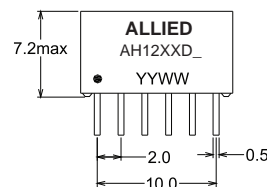
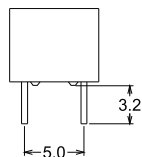
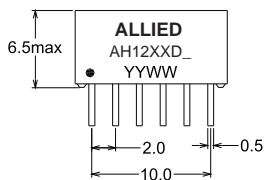
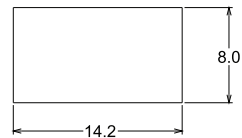
*Complete part number by inserting "S" for Standard Temp or "I" for Industrial Temp.

All specifications subject to change without notice.

MECHANICAL

AH1201D_, AH1203D_, AH1210D_, AH1213D_,
AH1217D_, AH1219D_, AH1220D_, AH1222D_

AH1202D_, AH1204D_, AH1205D_, AH1206D_,
AH1207D_, AH1208D_, AH1209D_, AH1211D_,
AH1215D_, AH1216D_, AH1218D_, AH1221D_



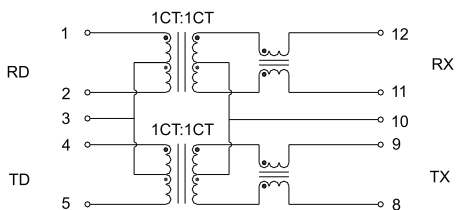
Unless otherwise specified all tolerances are: ±0.25 in mm



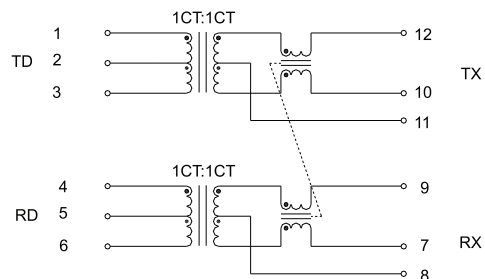
10/100 BASE-T SINGLE PORT THROUGH HOLE MAGNETICS

SCHEMATICS

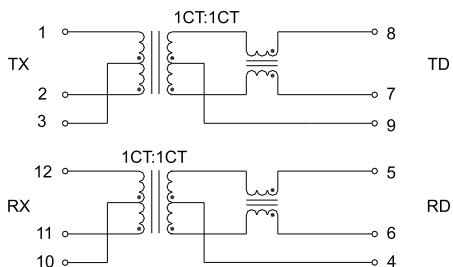
AH1201D_, AH1202D_, AH1213D_



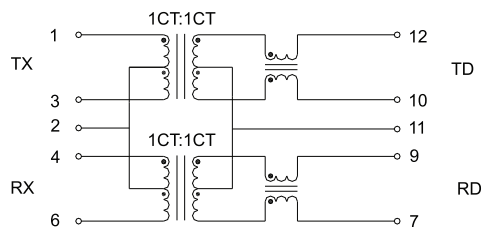
AH1203D_



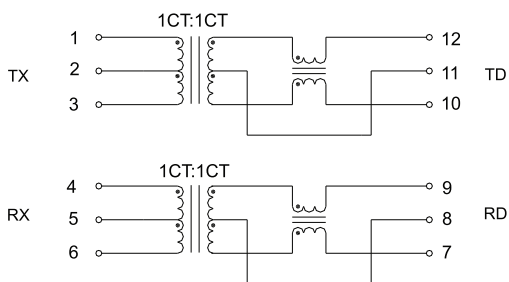
AH1204D_



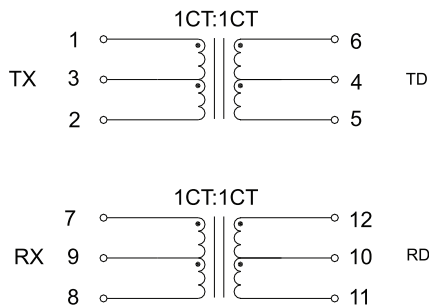
AH1205D_



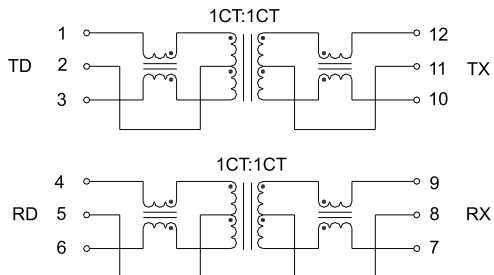
AH1206D_, AH1207D_, AH1222D_



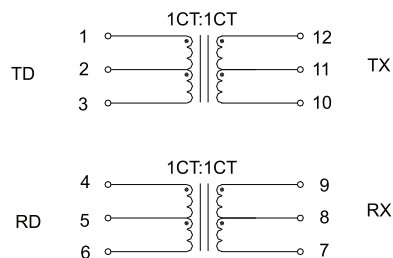
AH1208D_



AH1209D_



AH1210D_, AH1219D_

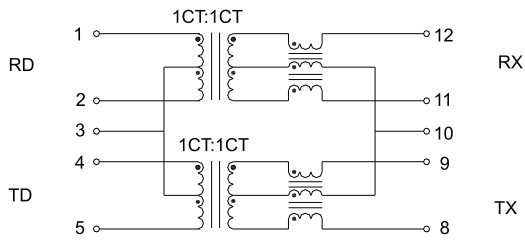




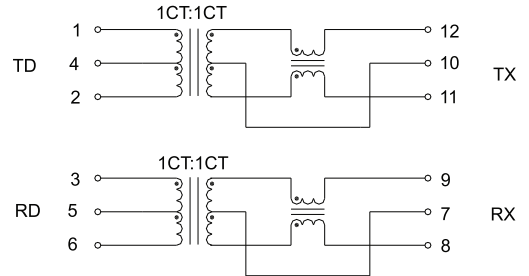
10/100 BASE-T SINGLE PORT THROUGH HOLE MAGNETICS

SCHEMATICS

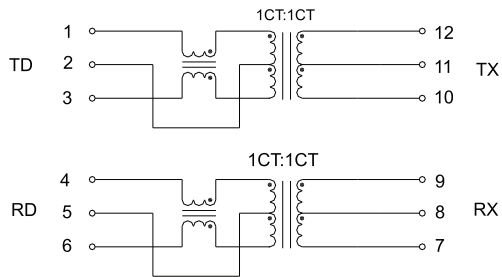
AH1211D_



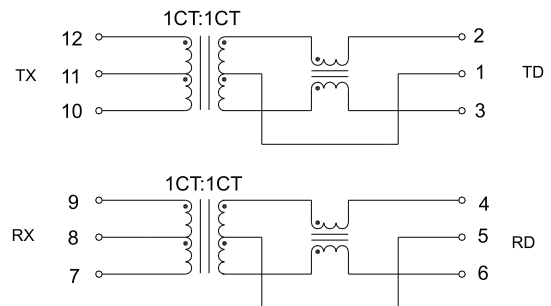
AH1216D_, AH1217D_



AH1215D_, AH1218D_



AH1220D_



AH1221D_

