

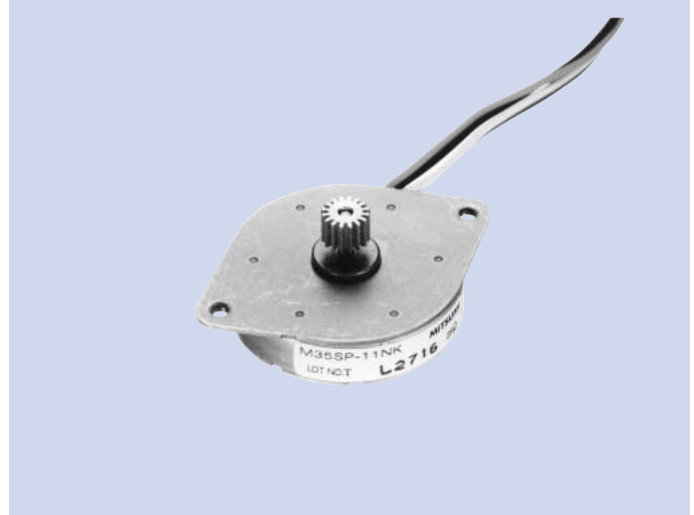
Stepping Motors

M35SP-11NK

OUTLINE

M35SP-11NK, which has the thinnest body among the model series with $\phi 35$ diameter, realizes step angle of 3.75° , high resolution and high speed responsiveness.

It is ideal for use in the small electronic equipment of the future.



FEATURES

1. Thin, high resolution, high output torque.
2. Superior running quietness and stability.
3. Step angle : 3.75° /step.
4. Excellent responsiveness acquired.

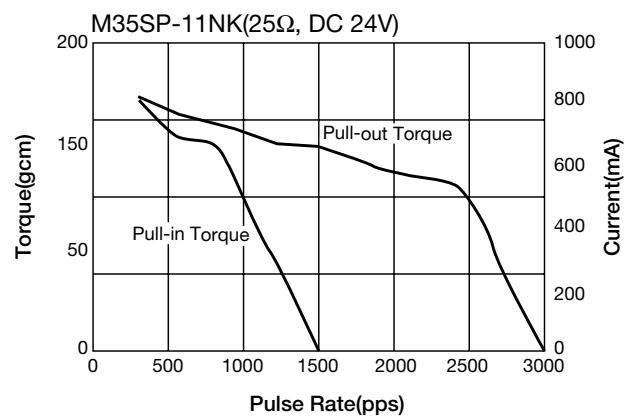
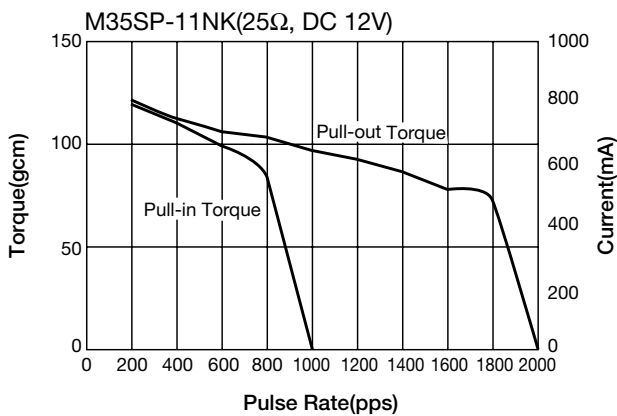
USES

Scanners, printers, etc.

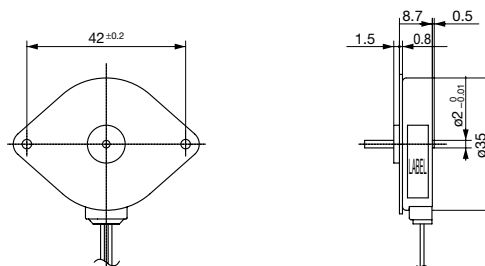
SPECIFICATIONS

Items	M35SP-11NK	
	DC 12V	DC 24V
Rated Voltage	DC 12V	DC 24V
Working Voltage	DC 10.8~13.2V	DC 21.6~26.4V
Rated Current/Phase	200mA(PEAK)	300mA(PEAK)
No. of Phase	2 Phase	2 Phase
Coil DC Resistance	25Ω/phase±7%	25Ω/phase±7%
Step Angle	3.75°/step	3.75°/step
Excitation Method	2-2 Phase excitation(Bipolar driving)	
Insulation Class	Class E insulation	Class E insulation
Holding Torque	14.7mN·m	20mN·m
Pull-out Torque	8.9mN·m/1200pps	12.1mN·m/1800pps
Pull-in Torque	10.8mN·m/400pps	13.8mN·m/600pps
Max. Pull-out Pulse Rate	1900pps	3300pps
Max. Pull-in Pulse Rate	920pps	1250pps

CHARACTERISTICS



DIMENSIONS



Unit : mm, General tolerance : ±0.5