

# SCREW MOUNT DIP SOCKETS IC SERIES

Mates with:  
AP, APS, APO,  
APA, APE, APH

## Highest reliability DIP sockets

IC series DIP sockets feature U.L. rated G.F. polyester body with mounting holes and use precision machined lead sockets for high reliability in the most demanding applications.

### SPECIFICATIONS

**Insulator Material:** Black Glass Filled Polyester  
**Flammability Rating:** UL 94V-0  
**Insulation Resistance:** 5000 megohm @ 500 VDC  
**Temperature Range:** -55°C to +125°C  
**Withstanding Voltage:** 1000 VRMS@60 Hz  
**Contact:** BeCu



**Shell:** Brass except style K  
 Phosphor Bronze  
**Plating:** Au over 50µ" Ni or Sn over 100µ" Cu or 50µ" Ni  
**Current Rating:** 1 amp continuous @ 100 VDC per contact  
**Contact Resistance:** 10 milliohms @ 200 milliamp  
**Socket Retention in Body:** 5 lbs against barb  
**Lead Size Range:** .015" to .022" DIA and most IC leads  
**Insertion Force:** Standard = 9 oz avg, 16 oz max (.017" DIA probe); Low Insertion Force = 2.5 oz avg, 5.5 oz max (.018" DIA probe)  
**Withdrawal Force:** Standard = 2.5 oz avg, 1.5 oz min (after 12 insertions with .017" DIA probe); Low Insertion Force = 2.0 oz avg, 0.35 oz min (after 12 insertions with .018" DIA probe)

**Note:** Some sizes, styles and options are non-standard, non-returnable.

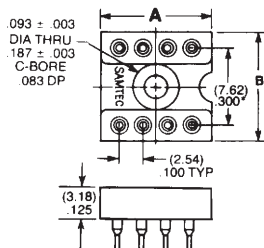
**TYPE SOCKET**  
IC = IC Socket

**ROW SPACING & NO. OF CONTACTS**

- 306 = .300 Row / 6 Contacts
- 308 = .300 Row / 8 Contacts
- 310 = .300 Row / 10 Contacts

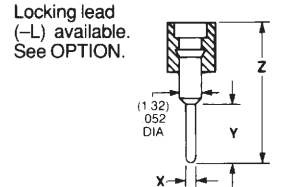
Part No.	A Length	B Width
IC-306	(8.89) .350	(10.16) .400
IC-308	(11.43) .450	(10.16) .400
*IC-310	(13.97) .550	(10.16) .400

\* Mounting hole off center on 10 position.

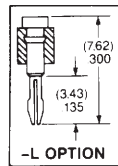


**-S\*, -A\*, -J, or -K**  
= Printed Circuit  
\*For LIF Specify -ZS or -ZA

LEAD STYLE	X DIA	Y TAIL	Z
-S or -ZS	(0.51) .020	(3.18) .125	(7.62) .300
-A or -ZA	(0.51) .020	(4.57) .180	(8.89) .350
-J	(0.64) .025	(10.41) .410	(15.24) .600
-K	(0.89) .035	(12.95) .510	(17.86) .703



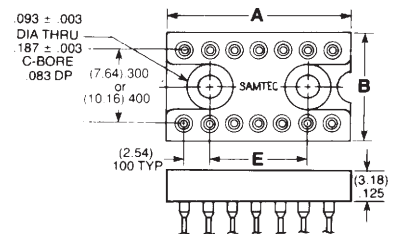
Style S, ZS, A, ZA & J Insertion Depth = .095" to .150"  
 Style S Component Part No. = SC-1P1  
 Style ZS Component Part No. = EZ-1P1  
 Style A Component Part No. = SC-6P1  
 Style ZA Component Part No. = EZ-6P1  
 Style J Component Part No. = SC-1P3  
 Option L Insertion Depth = .095" to .150"  
 Option L Component Part No. = SC-1L1 or EZ-1L1  
 Style K Insertion Depth = .125" to .170"  
 Style K Component Part No. = SC-2P1



Low Insertion Force (LIF) Contacts Available.

- 314 = .300 Row / 14 Contacts
- 316 = .300 Row / 16 Contacts
- 318 = .300 Row / 18 Contacts
- 320 = .300 Row / 20 Contacts
- 324 = .300 Row / 24 Contacts
- 422 = .400 Row / 22 Contacts
- 424 = .400 Row / 24 Contacts

Part No.	A Length	B Width	E Mnt Holes
IC-314	(17.78) .700	(10.16) .400	(10.16) .400
IC-316	(20.32) .800	(10.16) .400	(12.70) .500
IC-318	(22.86) .900	(10.16) .400	(15.24) .600
IC-320	(25.40) 1.000	(10.16) .400	(17.78) .700
IC-324	(30.48) 1.200	(10.16) .400	(22.86) .900
IC-422	(27.94) 1.100	(10.16) .400	(20.32) .800
IC-424	(30.48) 1.200	(12.70) .500	(22.86) .900



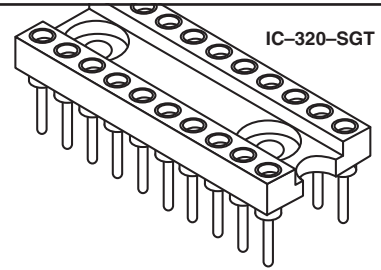
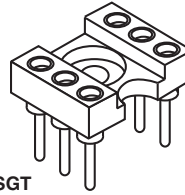
Due to technical progress, all designs, specifications and components are subject to change without notice.

**WWW.SAMTEC.COM**



**MOLD-TO-POSITION PRODUCT**  
 Minimums or set-up charges may apply. Call Samtec.

IC-306-SGT



IC-320-SGT

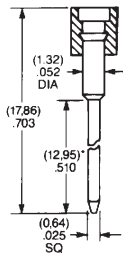
**LEAD STYLE**

**PLATING OPTION**

**OPTION**  
 (Leave Blank for Standard Version)

**-W**

= Wire-Wrap  
 For LIF Specify -ZW



Shorter w/w tail lengths available. See OPTION.

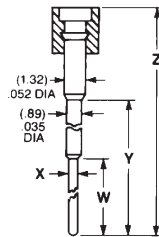
Insertion Depth = .125" to .170"  
 Style W Component Part No. = SC-1W1(1)  
 Style ZW Component Part No. = EZ-1W1(1)  
 Style W-2 Component Part No. = SC-1W1(2)  
 Style ZW-2 Component Part No. = EZ-1W1(2)  
 Style W-3 Component Part No. = SC-1W1(3)  
 Style ZW-3 Component Part No. = EZ-1W1(3)

**-E**

= Elevated  
 For LIF Specify -ZE or -ZH

LEAD STYLE	X DIA	W TAIL	Y	Z
-E or -ZE	(0.51) .020	(4.32) .170	(8.86) .349	(13.77) .543
-ZH	(0.46) .018	(3.81) .150	(12.95) .510	(17.86) .703

Insertion Depth = .125" to .175"  
 Style E Component Part No. = SC-2P3  
 Style ZE Component Part No. = EZ-2P3  
 Style ZH Component Part No. = EZ-2P2



**GG**

= 30µ" Gold Contact  
 10µ" Gold Shell

**GT**

= 30µ" Gold Contact  
 Tin Shell

**TT**

= Tin Contact and Shell  
 (-S, -ZS, -W, -ZW, -A, -H only)

**ST**

= 10µ" Gold Contact  
 Tin Shell  
 (-S & -ZS only)

**-2**

= (9.14) .360  
 Wire-Wrap Tail

**Wire-Wrap Option**

Requires Style -W or -ZW  
 Specify desired suffix for shorter Wire-Wrap tail.

**-3**

= (6.60) .260  
 Wire-Wrap Tail

**-L**

= Locking Socket



Requires Style -S or -ZS and .035"± .003" board hole.  
 Requires GT plating option

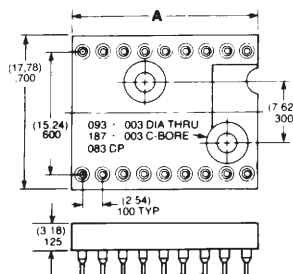
**-610** = .600 Row / 10 Contacts

**-614** = .600 Row / 14 Contacts

**-616** = .600 Row / 16 Contacts

**-618** = .600 Row / 18 Contacts

Part No.	A Length
IC-610	(12.70) .500
IC-614	(17.78) .700
IC-616	(20.32) .800
IC-618	(22.86) .900



**-624** = .600 Row / 24 Contacts

**-628** = .600 Row / 28 Contacts

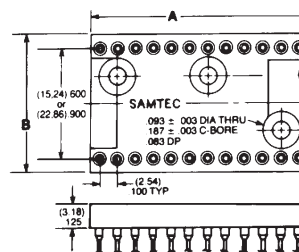
**-632** = .600 Row / 32 Contacts

**-640** = .600 Row / 40 Contacts

**-940** = .900 Row / 40 Contacts

**-950** = .900 Row / 50 Contacts

**-964** = .900 Row / 64 Contacts



Part No.	A Length	B Width
IC-624	(30.48) 1.200	(17.78) .700
IC-628	(35.56) 1.400	(17.78) .700
IC-632	(40.64) 1.600	(17.78) .700
IC-640	(50.80) 2.000	(17.78) .700
*IC-940		
†IC-950	(63.50) 2.500	(26.27) 1.050
IC-964	(81.28) 3.200	

\*IC-940 and IC-950 are non-standard non-returnable.

†Mounting hole off center on 50 positions

Due to technical progress, all designs, specifications and components are subject to change without notice.

**WWW.SAMTEC.COM**