



**Non-Insulated Terminals  
Bifurcated Hollow Sub  
& Micro Miniature**

Please refer to Figure 2005

Part No.	Board Thick	Mounting Hole Dia	+0.003 -0.001	D Nom	L Nom	Swage Tool
2005AA	.015	.064		.062	.037	2005
2005A	.031	.064		.062	.053	2005
2005B	.062	.064		.062	.084	2005
2005C	.094	.064		.062	.115	2005
2005D	.125	.064		.062	.147	2005

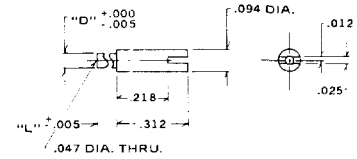


Fig. 2005

Please refer to Figure 2020

Part No.	Board Thick	Mounting Hole Dia	+0.003 -0.001	D Nom	L Nom	Swage Tool
2020AA	.016	.065		.063	.037	2020
2020A	.031	.065		.063	.053	2020
2020B	.062	.065		.063	.084	2020
2020C	.094	.065		.063	.115	2020
2020D	.125	.065		.063	.147	2020

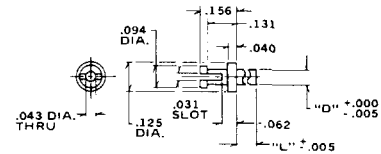


Fig. 2020

**Non-Insulated Terminals  
Bifurcated Hollow Sub  
& Micro Miniature**

Please refer to Figure 2021

Part No.	Board Thick	Mounting Hole Dia	+0.003 -0.001	D Nom	L Nom	Swage Tool
2021A	.031	.065		.063	.053	2021
2021B	.062	.065		.063	.084	2021
2021C	.094	.065		.063	.115	2021
2021D	.125	.065		.063	.147	2021

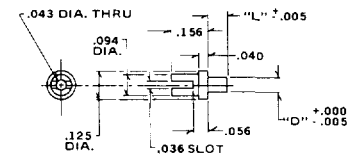


Fig. 2021

Please refer to Figure 2022

Part No.	Board Thick	Mounting Hole Dia	+0.003 -0.001	D Nom	L Nom	Swage Tool
2022AA	.016	.065		.063	.037	2022
2022A	.031	.065		.063	.053	2022
2022B	.062	.065		.063	.084	2022
2022C	.094	.065		.063	.115	2022
2022D	.125	.065		.063	.147	2022

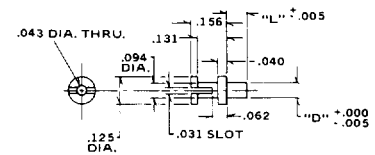


Fig. 2022

Please refer to Figure 2065

Part No.	Board Thick	Mounting Hole Dia	+0.003 -0.001	D Nom	L Nom	Swage Tool
2065A	.031	.034		.032	.053	2065
2065B	.062	.034		.032	.084	2065
2065C	.094	.034		.032	.115	2065
2065D	.125	.034		.032	.147	2065

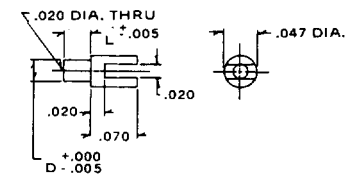


Fig. 2065

**Standard Plating Suffix to Part Number**  
See Page 93 for all plating options.

**Terminal**  
-1 (Ag over Cu)

TOLERANCE: .xxx ±.005, .xx ±.01 (ALL DIMS. BEFORE PLATING)