

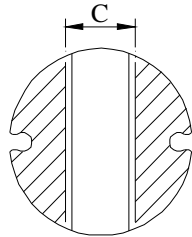
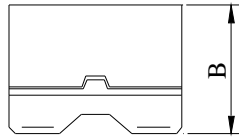
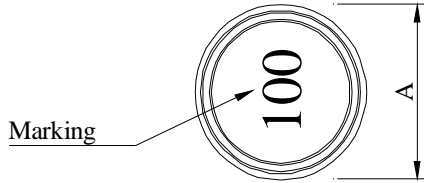
SPECIFICATION FOR APPROVAL

REF :

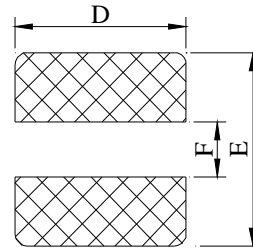
PAGE: 1

PROD. NAME	SHIELDED SMD POWER INDUCTOR	ABC'S DWG NO.	SS1004□□□□L□-□□□
		ABC'S ITEM NO.	

I . CONFIGURATION & DIMENSIONS :

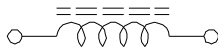


- A : 9.9±0.3 m/m
- B : 4.5±0.3 m/m
- C : 2.9 typ. m/m
- D : 10.0 ref. m/m
- E : 10.0 ref. m/m
- F : 2.8 ref. m/m



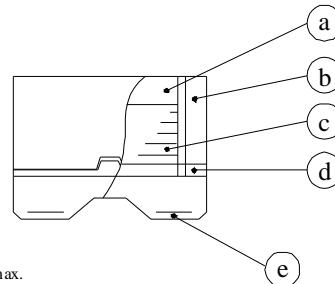
(PCB Pattern)

II . SCHEMATIC DIAGRAM :

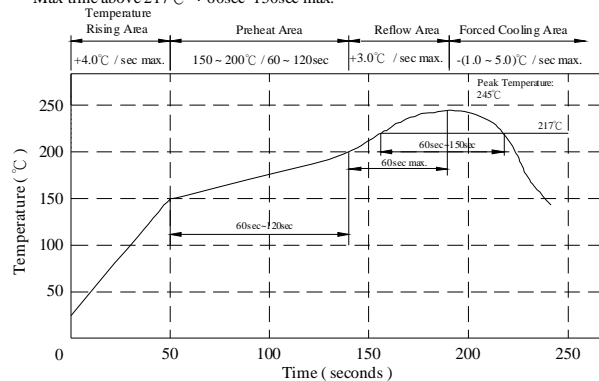


III . MATERIALS :

- a . Core : Ferrite DR core
- b . Core : Ferrite RI core
- c . Wire : Enamelled copper wire (class F)
- d . Plastic : GAP Spacer
- e . Terminal : Ag/Ni/Sn
- f . Remark : Products comply with RoHS' requirements



Peak Temp : 245°C max.
 Max. Peak Temp - 5°C : 30sec max.
 Max time above 217°C : 60sec-150sec max.



IV . GENERAL SPECIFICATION :

- a . Temp. rise : 40°C typ.
- b . Rated current : Base on temp. rise & ΔL / LOA=25% typ.
- c . Storage temp. : -40°C ----+125°C
- d . Operating temp. : -40°C ----+105°C
- e . Resisance to solder heat : 245°C .10 secs.

AR-001A

SPECIFICATION FOR APPROVAL

REF :

PAGE: 2

PROD. NAME	SHIELDED SMD POWER INDUCTOR	ABC'S DWG NO.	SS1004□□□□L□-□□□
		ABC'S ITEM NO.	

V . ELECTRICAL CHARACTERISTICS :

DWG No.	Inductance (μ H)	Q ref.	Test Freq.(Hz)		SRF (MHz) typ.	RDC (Ω) max.	Isat (A)	Irms (A)
			L	Q				
SS1004100ML□-□□□	10 \pm 20%	26	100K	2.520M	30.0	0.035	3.00	3.50
SS1004150ML□-□□□	15 \pm 20%	35	100K	2.520M	26.0	0.058	2.40	2.70
SS1004220ML□-□□□	22 \pm 20%	30	100K	2.520M	20.0	0.065	2.10	2.50
SS1004330ML□-□□□	33 \pm 20%	30	100K	2.520M	15.0	0.095	1.60	2.00
SS1004470YL□-□□□	47 \pm 15%	28	100K	2.520M	12.0	0.132	1.40	1.80
SS1004680YL□-□□□	68 \pm 15%	26	100K	2.520M	10.9	0.180	1.20	1.50
SS1004101YL□-□□□	100 \pm 15%	28	100K	0.796M	9.0	0.270	1.00	1.10
SS1004151YL□-□□□	150 \pm 15%	32	100K	0.796M	6.5	0.420	0.78	0.90
SS1004221YL□-□□□	220 \pm 15%	33	100K	0.796M	5.5	0.590	0.65	0.72
SS1004331YL□-□□□	330 \pm 15%	25	100K	0.796M	4.8	0.800	0.54	0.60
SS1004471KL□-□□□	470 \pm 10%	24	100K	0.796M	3.6	1.200	0.47	0.50
SS1004681KL□-□□□	680 \pm 10%	30	100K	0.796M	2.7	1.680	0.38	0.42
SS1004102KL□-□□□	1000 \pm 10%	65	100K	0.252M	2.1	2.650	0.32	0.35
SS1004152KL□-□□□	1500 \pm 10%	75	100K	0.252M	1.8	4.000	0.22	0.26

1). □ : Packaging information... **A** } Bulk **B** } Taping Reel

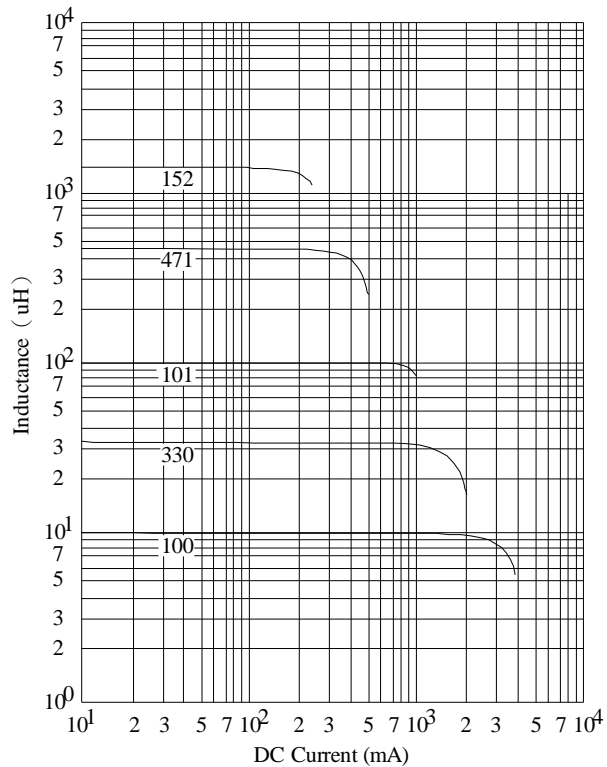
2). "- □□□":Reference code

3).Inductance test freq : 100KHz / 0.1V

4). Irms Base on temp.rise 40°C typ

5). Isat Base on $\Delta L/L0A=25\%$ typ

@ Inductance VS. DC Current Curve



AR-001A



SPECIFICATION FOR APPROVAL

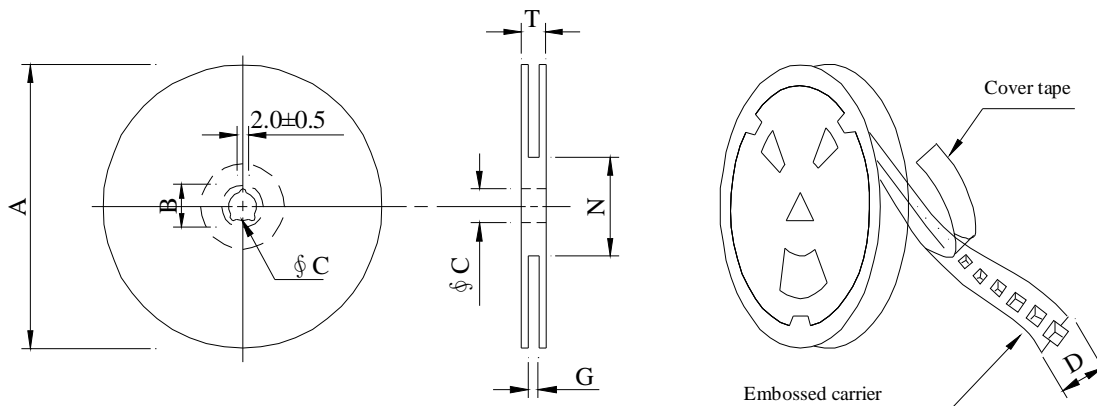
REF :

PAGE: 3

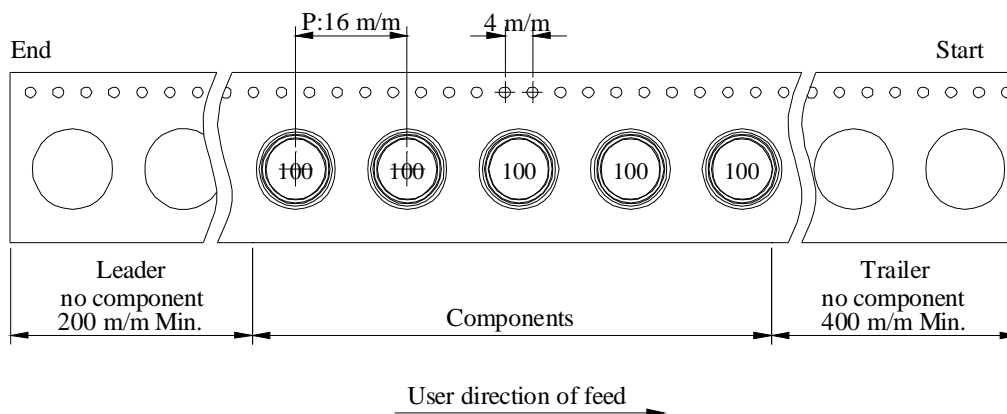
PROD. NAME	SHIELDED SMD POWER INDUCTOR	ABC'S DWG NO.	SS1004□□□□L□-□□□
		ABC'S ITEM NO.	

VI . PACKAGING INFORMATION :

(1) Configuration



※Carrier tape width : D



(2) Dimensions

Unit:m/m

Style	A	B	C	D	G	N	T
13 - 24	330	21±0.8	13±0.5	24	26 ⁺⁰	50 ⁻⁰	30.4

(3) Q'TY & G.W. Per package

Series	Inner : Reel			Outer : Carton		
	QTY (pcs)	G.W. (gw)	Style	QTY (pcs)	G.W. (Kg)	Size (cm)
SS1004	800	1050	13 - 24	3200	4.2	38 x 37 x 22

AR-001A

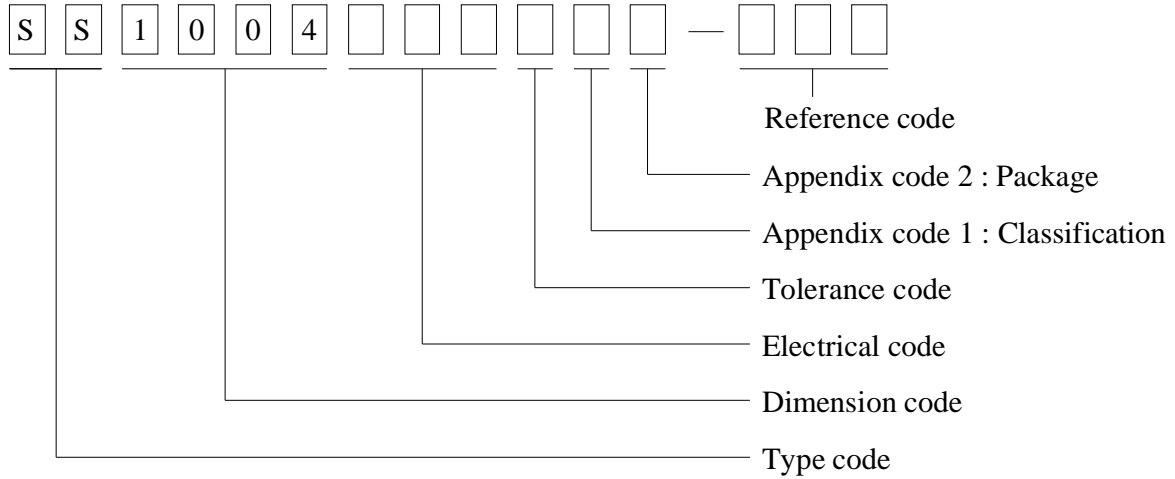
SPECIFICATION FOR APPROVAL

REF :

PAGE: 4

PROD.	SHIELDED SMD	ABC'S DWG NO.	SS1004□□□□L□-□□□
NAME	POWER INDUCTOR	ABC'S ITEM NO.	

VII . DWGING NUMBER EXPRESSION :



Appendix code 1 : Product Classification

- L : Lead Free Standard products comply with RoHS' requirements
- 1 ~ 9 : Lead Free Special products comply with RoHS' requirements

Appendix code 2 : Package Information

Code	Inner package	Inner package Q'TY	Remark
A	T.B.D.	T.B.D.	
B	T / R (Reel package)	800 pcs	

SPECIFICATION FOR APPROVAL

REF :

PAGE: 5

PROD. NAME	SHIELDED SMD POWER INDUCTOR	ABC'S DWG NO. ABC'S ITEM NO.	SS1004□□□□L□-□□□
---------------	--------------------------------	---------------------------------	------------------

VIII . RELIABILITY TEST :

Test item	Specification	Test condition						
Solderability	More than 95% of the terminal electrode shall be covered With fresh solder.	Preheat : 155°C / 4 hours. Solder : Sn96.5 / Ag3 / Cu0.5 or equivalent Solder temp. : 235±5°C Flux : Rosin Dip time : 5±0.5 seconds						
Thermal shock test (Temp. cycle)	Electrical oharacteristics shall not change more than ±20%	<table style="width: 100%; border: none;"> <tr> <td style="text-align: center;">Room temp. 15 minutes</td> <td style="text-align: center;">→</td> <td style="text-align: center;">-40 °C 30 minutes</td> </tr> <tr> <td style="text-align: center;">Room temp. 15 minutes</td> <td style="text-align: center;">→</td> <td style="text-align: center;">+105 °C 30 minutes</td> </tr> </table> <p>Total : 50 cycles</p>	Room temp. 15 minutes	→	-40 °C 30 minutes	Room temp. 15 minutes	→	+105 °C 30 minutes
Room temp. 15 minutes	→	-40 °C 30 minutes						
Room temp. 15 minutes	→	+105 °C 30 minutes						
Humidity Test		Temperature : 40±2°C Humidity : 90±5% Time : 1000 hours						
High temp. Resistance test		Temperature : 105±5°C Applied current : Per spec. Time : 96 hours						

AR-001A



SPECIFICATION FOR APPROVAL

REF :

PAGE: 6

PROD.	SHIELDED SMD	ABC'S DWG NO.	SS1004□□□□L□-□□□
NAME	POWER INDUCTOR	ABC'S ITEM NO.	

IX . UL CARD :

OBMW2 September 8, 2000
Magnet Wire-Component

JUNG SHING WIRE CO LTD E174837
231 CHUNG CHENG RD, SEC 3 JEN-TEH HSIANG, TAINAN
HSIEN TAIWAN

Mtl Dsg	Mark Dsg	BC	Coat Typ	OC	ANSI Type	Temp Class
AIW	---	Polyamideimide	---	---	MW81-C	220
CFUEWB	---	Polyurethane	---	---	MW75C	130
EIAIW	---	Polyesterimide	Polyamideimide	---	MW35C	200
EILOCKY	---	Polyesterimide	Polyamide	---	---	180
EILOCKW	---	Polyesterimide	Modified Epoxy	---	---	200
EIW	---	Polyesterimide	---	---	---	220
EIW-2	---	Polyesterimide	---	---	MW74-C	200
FL.EILOCKY	---	Modified Polyester	Polyamide	---	---	155
LSFFW	---	Polyurethane	---	---	MW79-C	155
LSUEW	---	Polyurethane	---	---	---	130
PEW	---	Polyester	---	---	---	155
PEY	---	Polyester	Nylon	---	MW24-C	155
SF.FLW	---	Modified Polyester	---	---	MW26C	155
SF.EIW	---	Polyesterimide	---	---	MW77C	180
SF.BY@	---	Modified Polyester	Nylon	---	MW27-C	155
SF.FLY@	---	Modified Polyester	Nylon	---	MW27-C	155
SF.BLOCKBS	---	Modified Polyester	Modified Polyamide	---	---	155
SF.EILOCKY#	---	Polyesterimide	Polyamide	---	---	180
SF.EILOCKBS	---	Polyesterimide	Modified Polyamide	---	---	180
SF.BW@	---	Modified Polyester	---	---	MW26C	155
SFFW	---	Polyurethane	---	---	MW79	155

287806002 Page 1 of 2

A not-for-profit organization dedicated to public safety and committed to quality service

Mtl Dsg	Mark Dsg	BC	Coat Typ	OC	ANSI Type	Temp Class
SFFY	---	Polyurethane	Polyamide	---	MW30C	155
UEW-1	---	Polyurethane	---	---	MW2-C	105
UEW-2	---	Polyurethane	---	---	---	130
UEW-4	---	Polyurethane	---	---	MW75C	130
UEY	---	Polyurethane	Nylon	---	MW28-C	130
UEY-2	---	Polyurethane	Polyamide	---	MW28-C	130

287806002 Page 2 of 2

OBMW2E174837
September 8, 2000

@ - May be suffixed by LZ; # - May be suffixed by LZ, EL or LZL.
LZ - Signifies magened wires twisted together; EL - signifies base coated magnet wire laid parallel with top coat applied overall; LZL - signifies base coated magnet wire twisted together and covered with top coat overall.

Marking: Company name or trademarks or 榮星電線, material designation or marked designation on packaed or reel, and Recognized Component Mark.

See General Information Preceding These Recognitions
For use only in equipment where the acceptability of the combination is determined by Underwriters Laboratories Inc.

AR-001A

