



SAW Components

Data Sheet B7745

Data Sheet

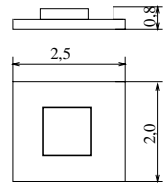
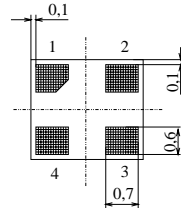
A large, stylized, 3D-rendered graphic of the EPCOS logo. The letters "EPCOS" are rendered in a bold, white, sans-serif font, appearing to be part of a curved, metallic-looking structure. The background is dark and textured, suggesting a globe or a complex surface.

Chip Sized SAW Package DCS4D
Features

- RF filter for mobile telephone UMTS systems, transmit path
- Low insertion loss, low amplitude ripple
- Usable passband 60 MHz
- Package for Surface Mounted Technology (SMT)

Terminals

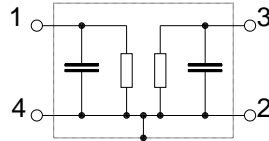
- Gold-plated Ni



Dimensions in mm, approx. weight 0,015 g

Pin configuration

- | | |
|-----|--------|
| 1 | Input |
| 3 | Output |
| 2,4 | Ground |



Type	Ordering code	Marking and Package according to	Packing according to
B7745		C61157-A7-A89	F61074-V8125-Z000

Electrostatic Sensitive Device (ESD)
Maximum ratings

Operating temperature range	T	- 20/ +85	°C	
Storage temperature range	T_{stg}	- 40/ +85	°C	
DC voltage	V_{DC}	3	V	
Input Power max.	P_{IN}	8	dBm	

Data Sheet

Characteristics

Operating temperature range : $T = 25\text{ }^{\circ}\text{C}$
 Terminating source impedance: $Z_S = 50\ \Omega$
 Terminating load impedance: $Z_L = 50\ \Omega$

				min.	typ.	max.	
Center frequency			f_C	—	1950,0	—	MHz
Maximum insertion attenuation			α_{\max}				
	1920,0...	1980,0	MHz	—	2,4	2,6	dB
Amplitude ripple (p-p)			$\Delta\alpha$				
	1920,0...	1980,0	MHz	—	1,0	1,2	dB
Absolute attenuation			α				
	DC..	1000,0	MHz	36	40	—	dB
	1000,0..	1600,0	MHz	35	38	—	dB
	1705,0..	1715,0	MHz	30	34	—	dB
	1805,0..	1880,0	MHz	23	27	—	dB
	2110,0...	2170,0	MHz	28	31	—	dB
	2300,0...	2360,0	MHz	31	34	—	dB
	2490,0...	2550,0	MHz	33	37	—	dB
	2680,0...	2740,0	MHz	35	40	—	dB
	3060,0...	3120,0	MHz	31	35	—	dB
	3840,0...	3960,0	MHz	27	33	—	dB
	4000,0...	6000,0	MHz	20	27	—	dB
Input VSWR							
	1920,0...	1980,0	MHz	—	1,6	1,8	
Output VSWR							
	1920,0...	1980,0	MHz	—	1,8	2,0	

Data Sheet

Characteristics

Operating temperature range : $T = -20$ to $+75$ °C
 Terminating source impedance: $Z_S = 50 \Omega$
 Terminating load impedance: $Z_L = 50 \Omega$

				min.	typ.	max.	
Center frequency			f_C	—	1950,0	—	MHz
Maximum insertion attenuation			α_{\max}				
	1920,0...	1980,0	MHz	—	2,4	2,8	dB
Amplitude ripple (p-p)			$\Delta\alpha$				
	1920,0...	1980,0	MHz	—	1,0	1,4	dB
Absolute attenuation			α				
	DC..	1000,0	MHz	36	40	—	dB
	1000,0..	1600,0	MHz	35	38	—	dB
	1705,0..	1715,0	MHz	30	34	—	dB
	1805,0..	1880,0	MHz	22	26	—	dB
	2110,0...	2170,0	MHz	28	31	—	dB
	2300,0...	2360,0	MHz	31	34	—	dB
	2490,0...	2550,0	MHz	33	37	—	dB
	2680,0...	2740,0	MHz	35	40	—	dB
	3060,0...	3120,0	MHz	31	35	—	dB
	3840,0...	3960,0	MHz	27	33	—	dB
	4000,0...	6000,0	MHz	20	27	—	dB
Input VSWR							
	1920,0...	1980,0	MHz	—	1,7	2,0	
Output VSWR							
	1920,0...	1980,0	MHz	—	1,9	2,2	

Data Sheet

Characteristics

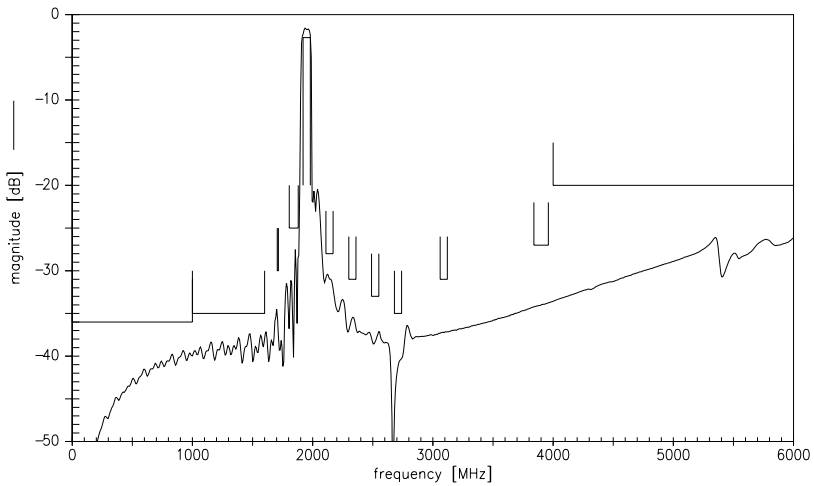
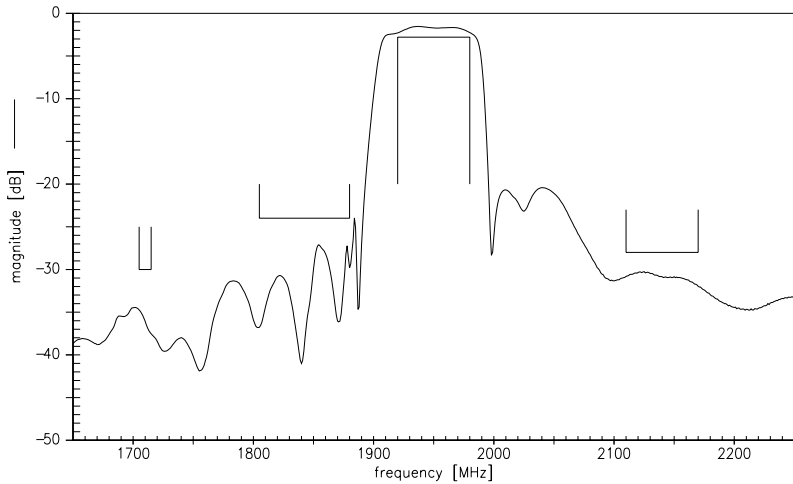
Operating temperature range : $T = -10$ to $+85$ °C
 Terminating source impedance: $Z_S = 50 \Omega$
 Terminating load impedance: $Z_L = 50 \Omega$

					min.	typ.	max.	
Center frequency				f_C	—	1950,0	—	MHz
Maximum insertion attenuation				α_{max}				
	1920,0...	1980,0	MHz		—	2,5	2,9	dB
Amplitude ripple (p-p)				$\Delta\alpha$				
	1920,0...	1980,0	MHz		—	1,1	1,5	dB
Absolute attenuation				α				
	DC..	1000,0	MHz		36	40	—	dB
	1000,0..	1600,0	MHz		35	38	—	dB
	1705,0..	1715,0	MHz		30	34	—	dB
	1805,0..	1880,0	MHz		22	26	—	dB
	2110,0...	2170,0	MHz		28	31	—	dB
	2300,0...	2360,0	MHz		31	34	—	dB
	2490,0...	2550,0	MHz		33	37	—	dB
	2680,0...	2740,0	MHz		35	40	—	dB
	3060,0...	3120,0	MHz		31	35	—	dB
	3840,0...	3960,0	MHz		27	33	—	dB
	4000,0...	6000,0	MHz		20	27	—	dB
Input VSWR								
	1920,0...	1980,0	MHz		—	1,7	2,0	
Output VSWR								
	1920,0...	1980,0	MHz		—	2,0	2,2	

Data Sheet



Transfer function (spec. for 25°C)



Published by EPCOS AG
Surface Acoustic Wave Components Division, SAW MC WT
P.O. Box 80 17 09, D-81617 München

© EPCOS AG 2002. All Rights Reserved. Reproduction, publication and dissemination of this brochure and the information contained therein without EPCOS' prior express consent is prohibited.

The information contained in this brochure describes the type of component and shall not be considered as guaranteed characteristics. Purchase orders are subject to the General Conditions for the Supply of Products and Services of the Electrical and Electronics Industry recommended by the ZVEI (German Electrical and Electronic Manufacturers' Association), unless otherwise agreed.

This brochure replaces the previous edition.

For questions on technology, prices and delivery please contact the Sales Offices of EPCOS AG or the international Representatives.

Due to technical requirements components may contain dangerous substances. For information on the type in question please also contact one of our Sales Offices.