

### General Description

The AAT1150 SwitchReg™ is a member of AnalogicTech™'s Total Power Management™ IC product family. The step-down switching converter is ideal for applications where high efficiency, small size, and low ripple are critical. Able to deliver 1A with internal Power MOSFETs, the current-mode controlled IC provides high efficiency using synchronous rectification. Fully internally compensated, the AAT1150 simplifies system design and lowers external part count.

The AAT1150 is available in MSOP-8 package, rated over -40 to 85°C.

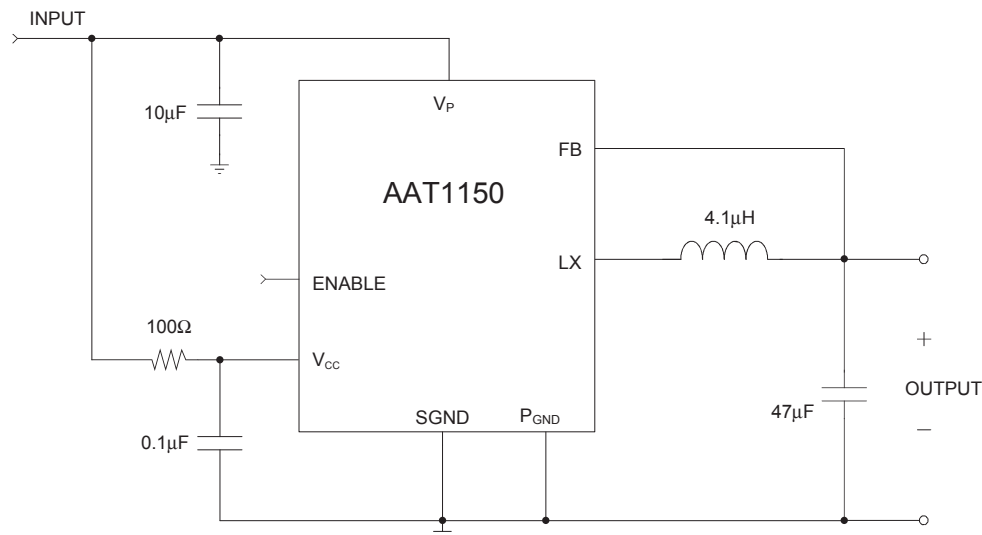
### Features

- $V_{IN}$  Range: 2.7 - 5.5 Volts
- Up to 95% efficiency
- 110 mΩ  $R_{DS(ON)}$  MOSFET switch
- < 1.0  $\mu$ A of Shutdown Current
- 1 MHz Switching Frequency
- Fixed or adjustable  $V_{OUT}$ : 1.0 - 4.2 V
- High accuracy over all conditions:  $\pm 4\%$
- 1.0 Amp Peak Current
- Integrated Power Switches
- Synchronous rectification
- Internally Compensated Current Mode Control
- Constant PWM Mode for low output ripple
- Internal Soft Start
- Current Limit Protection
- Over-Temperature Protection
- MSOP-8 package
- -40 To +85°C Temperature Range

### Applications

- Computer Peripherals
- Set Top Boxes
- Network Cards
- Cable/DSL Modems
- High efficiency conversion from 5V or 3.3V supply

### Typical Application

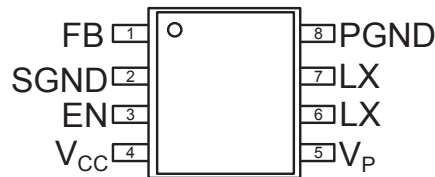


### Pin Descriptions

Pin #	Symbol	Function
1	FB	Feedback input pin. This pin must be connected to the converter's output. It is used to set the output of the converter to regulate to the desired value.
2	SGND	Signal ground.
3	EN	Enable input pin. When connected high, AAT1150 is in normal operation. When connected low, it is powered down. This pin should not be left floating.
4	VCC	Power supply. It supplies power for the internal circuitry.
5	VP	Input Supply Voltage for converter power stage.
6,7	LX	Inductor connection pins. These pins should be connected to the output inductor. Internally, pins 6 & 7 are connected to the drains of the P-channel switch and N-channel synchronous rectifier.
8	PGND	Power ground return for the output stage.

### Pin Configuration

**MSOP-8  
(Top view)**



### Absolute Maximum Ratings ( $T_A=25^\circ\text{C}$ unless otherwise noted)

Symbol	Description	Value	Units
$V_{CC}, V_P$	$V_{CC}, V_P$ to GND	6	V
$V_{LX}$	LX to GND	-0.3 to $V_P+0.3$	V
$V_{FB}$	FB to GND	-0.3 to $V_{CC}+0.3$	V
$V_{EN}$	EN to GND	-0.3 to 6	V
$T_J$	Operating Junction Temperature Range	-40 to 150	$^\circ\text{C}$
$V_{ESD}$	ESD Rating <sup>1</sup> - HBM	3000	V

Note: Stresses above those listed in Absolute Maximum Ratings may cause permanent damage to the device. Functional operation at conditions other than the operating conditions specified is not implied. Only one Absolute Maximum rating should be applied at any one time.

Note 1: Human body model is a 100pF capacitor discharged through a 1.5K resistor into each pin.

### Thermal Characteristics

Symbol	Description	Value	Units
$\Theta_{JA}$	Maximum Thermal Resistance (MSOP-8) <sup>2</sup>	150	$^\circ\text{C}/\text{W}$
$P_D$	Maximum Power Dissipation (MSOP-8, $T_A = 25^\circ\text{C}$ ) <sup>2,3</sup>	667	mW

Note 2: Mounted on a demo board.

Note 3: Derate 6.7mW/ $^\circ\text{C}$  above 25 $^\circ\text{C}$ .

### Recommended Operating Conditions

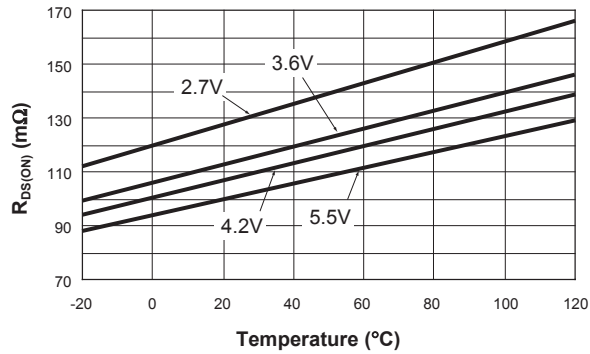
Symbol	Description	Rating	Units
T	Ambient Temperature Range	-40 to +85	$^\circ\text{C}$

**Electrical Characteristics** ( $V_{IN} = V_{CC} = V_P = 5V$ ,  $T_A = -40$  to  $85^\circ C$  unless otherwise noted. Typical values are at  $T_A = 25^\circ C$ )

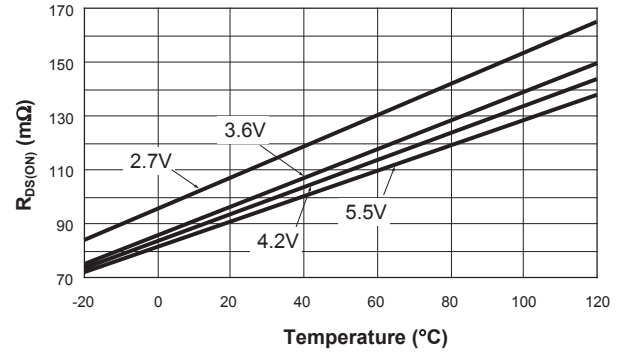
Symbol	Description	Conditions	Min	Typ	Max	Units
$V_{IN}$	Input Voltage Range		2.7		5.5	V
$V_{OUT}$	Output Voltage Tolerance	$V_{IN} = V_{OUT} + 0.3$ to $5.5V$ , $I_{OUT} = 0$ to $1A$	-4.0		4.0	%
$\Delta V_{OUT} (V_{OUT} * \Delta V_{IN})$	Load Regulation	$V_{IN} = 4.2V$ , $I_{LOAD} = 0 - 1A$		3.0		%
$\Delta V_{OUT}/V_{OUT}$	Line Regulation	$V_{IN} = 2.7$ to $5.5V$		0.2		%/V
$V_{UVLO}$	Under Voltage Lockout	$V_{IN}$ Rising			2.5	V
		$V_{IN}$ Falling	1.2			V
$V_{UVLO(HYS)}$	Under Voltage Lockout Hysteresis			250		mV
$I_Q$	Quiescent Supply Current	No Load, $V_{FB} = 0V$		160	300	$\mu A$
$I_{SHDN}$	Shutdown Current	$V_{EN} = 0V$ , $V_{IN} = 5.5V$			1.0	$\mu A$
$I_{LIM}$	Current Limit	$T_A = 25^\circ C$	1.2			A
$R_{DS(ON)L}$	High Side Switch On Resistance	$T_A = 25^\circ C$		110	150	m $\Omega$
$R_{DS(ON)H}$	Low Side Switch On Resistance	$T_A = 25^\circ C$		100	150	m $\Omega$
$\eta$	Efficiency	$V_{IN} = 5V$ , $V_{OUT} = 3.3V$ , $I_{OUT} = 600mA$		93		%
$V_{EN(L)}$	Enable Low Voltage	$V_{IN} = 2.7$ to $5.5V$			0.6	V
$V_{EN(H)}$	Enable High Voltage	$V_{IN} = 2.7$ to $5.5V$	1.4			V
$I_{EN}$	Enable Pin Leakage Current	$V_{EN} = 5.5V$			1.0	$\mu A$
$F_{OSC}$	Oscillator Frequency	$T_A = 25^\circ C$	700	1000	1200	KHz
$T_{SD}$	Over Temp Shutdown Threshold			140		$^\circ C$
$T_{HYS}$	Over Temp Shutdown Hysteresis			15		$^\circ C$

### Typical Characteristics

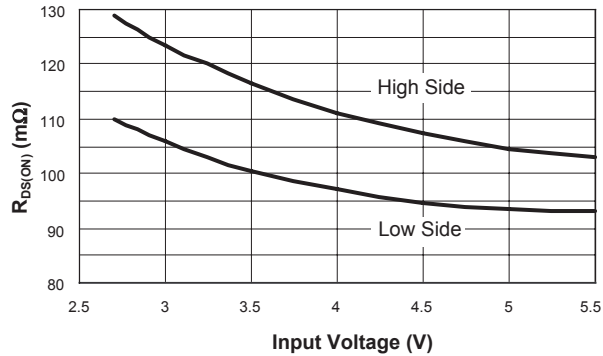
High Side  $R_{DS(ON)}$  vs. Temperature



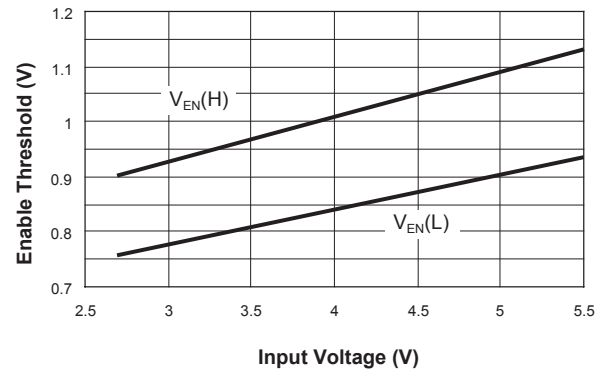
Low Side  $R_{DS(ON)}$  vs. Temperature



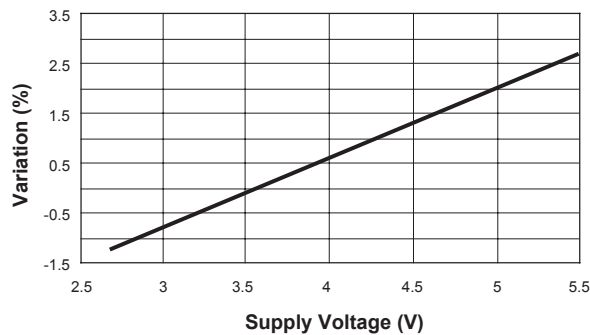
$R_{DS(ON)}$  vs. Input Voltage



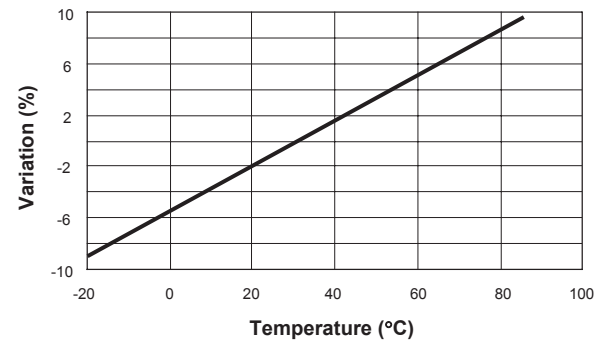
Enable Threshold vs. Input Voltage



Oscillator Frequency Variation vs. Supply Voltage



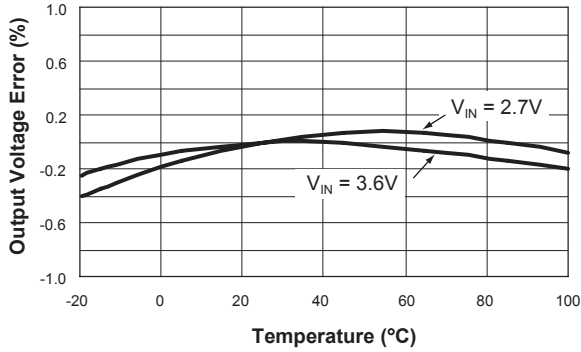
Oscillator Frequency Variation vs. Temperature  
 $V_{IN}=3.6V$



**Typical Characteristics**

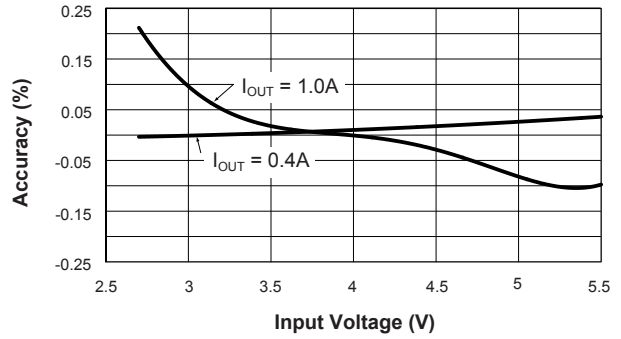
**Output Voltage vs. Temperature**

$I_{OUT}=900mA, V_{OUT}=1.5V$



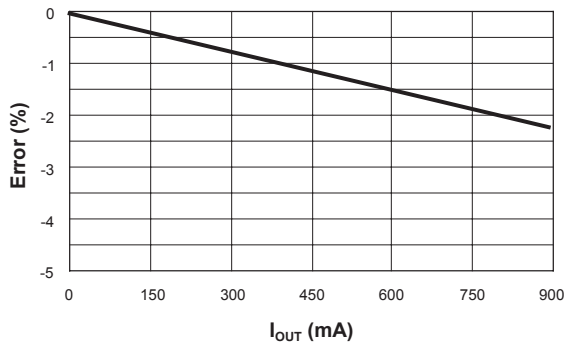
**Line Regulation**

$V_{OUT}=1.5V$



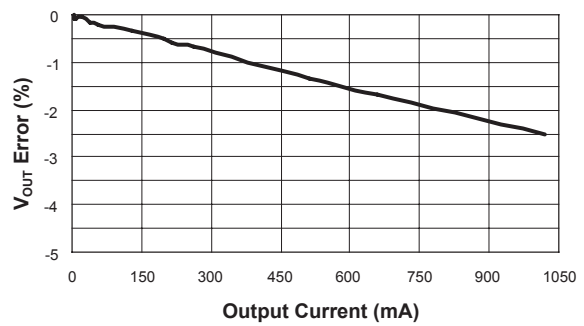
**Load Regulation**

$V_{OUT}= 1.5V, V_{IN}=3.6V$



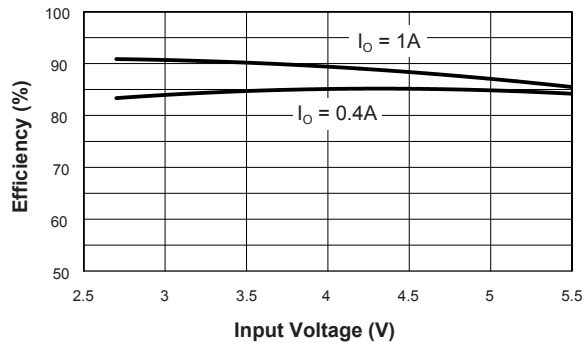
**Load Regulation**

$V_{OUT}=3.3V, V_{IN}=5.0V$



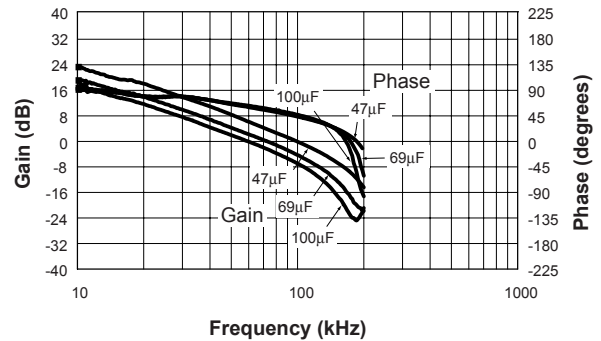
**Efficiency vs. Input Voltage**

$V_{OUT}=1.5V$



**Loop Gain and Phase vs. Output Capacitor**

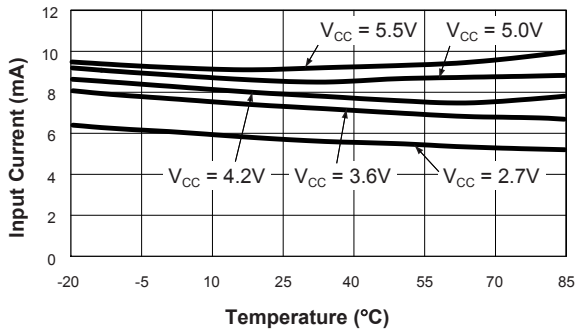
$V_{IN} = 3.6V, I_{OUT} = 0.3A$



### Typical Characteristics

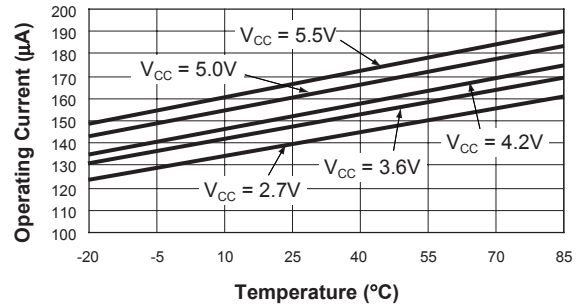
**No Load Input Current vs. Temperature**

$$V_{CC} = V_P$$

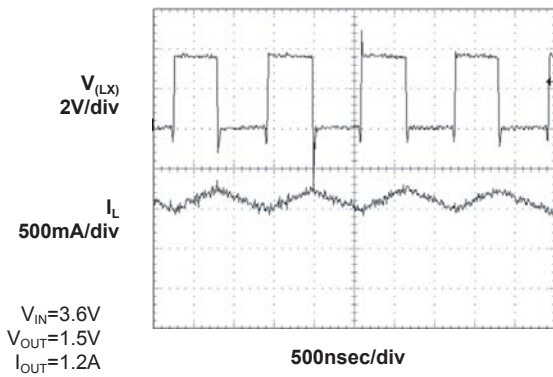


**Non-Switching I<sub>Q</sub> vs. Temperature**

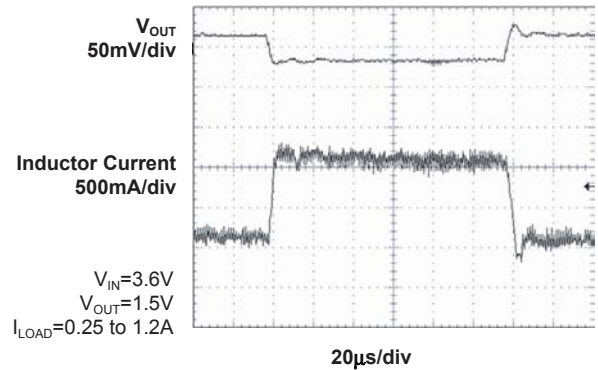
$$FB = 0V, V_P = V_{CC}$$



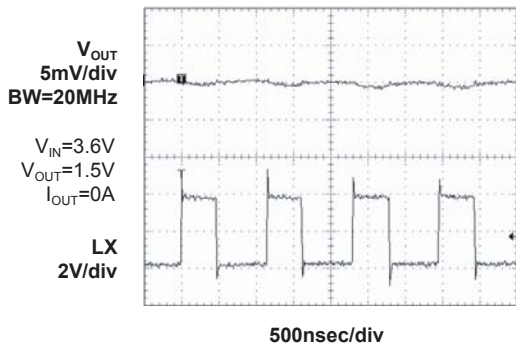
**Switching Waveform**



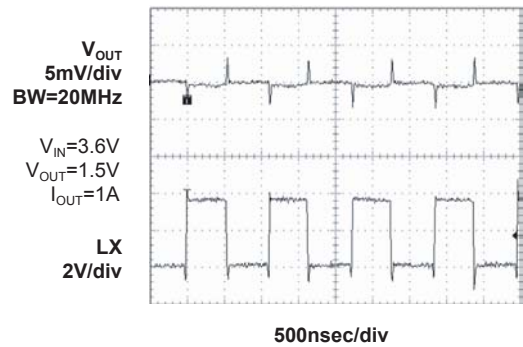
**Transient Response**



**Output Ripple 1.5V, No Load**

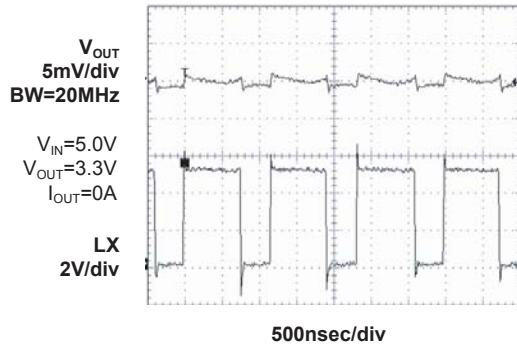


**Output Ripple 1.5V, 1A Load**

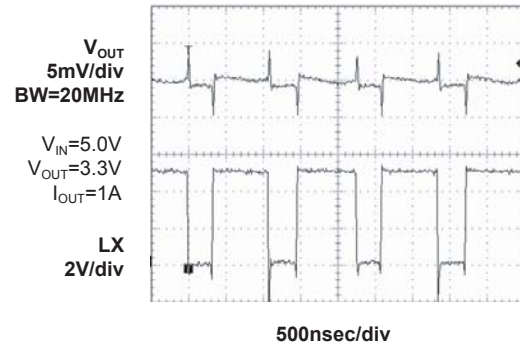


**Typical Characteristics**

**Output Ripple  
3.3V, No Load**

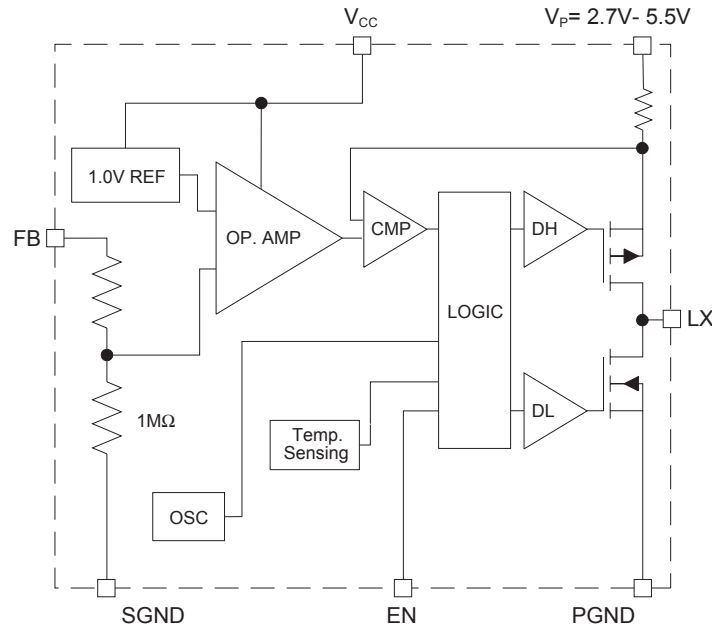


**Output Ripple  
3.3V, 1A Load**





### Functional Block Diagram



### Applications Information

#### 850 kHz 1 Amp DC-DC Synchronous Buck Converter Control Loop

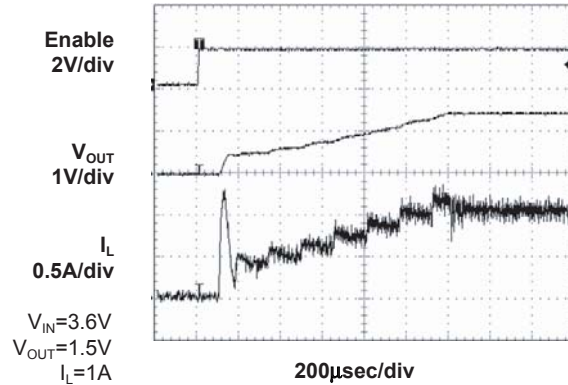
The AAT1150 is a peak current mode buck converter. The inner wide bandwidth loop controls the peak current of the output inductor. The output inductor current is sensed through the P-Channel MOSFET (high side) and is also used for short circuit and overload protection. A fixed slope compensation signal is added to the sensed current to maintain stability. The loop appears as a voltage programmed current source in parallel with the output capacitor.

The voltage error amplifier output programs the current loop for the necessary inductor current to

force a constant output voltage for all load and line conditions. The feedback resistive divider is internal, dividing the output voltage to the error amplifier reference voltage of 1.0V. The error amplifier does not have a large DC gain typical of most error amplifiers. This eliminates the need for external compensation components while still providing sufficient DC loop gain for load regulation. The crossover frequency and phase margin are set by the output capacitor value only.

#### Soft-Start/Enable

Soft start increases the inductor current limit point in discrete steps when the input voltage or enable input is applied. It limits the current surge seen at the input and eliminates output voltage overshoot. The enable input, when pulled low, forces the AAT1150 into a low power non-switching state. The total input current during shutdown is less than 1µA.



**Figure 1: Inrush Limit**

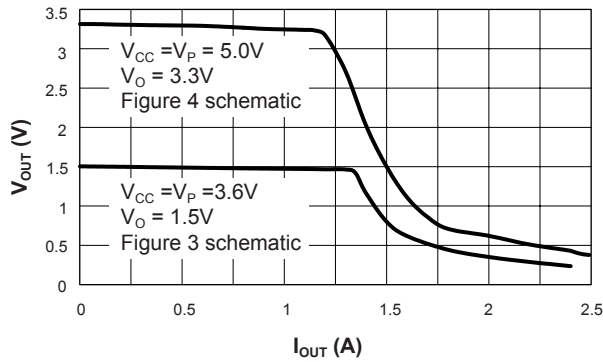
**Power and Signal Source**

Separate small signal ground and power supply pins isolate the internal control circuitry from the noise associated with the output MOSFET switching. The low pass filter R1 and C3 in schematic figures 3 and 4 filters the noise associated with the power switching.

**Current Limit and Over-temperature protection**

For overload conditions the peak input current is limited. Figure 2 displays the VI current limit characteristics. As load impedance decreases and the output voltage falls closer to zero, more power is dissipated internally, raising the device temperature. Thermal protection completely disables switching when internal dissipation becomes excessive, protecting the device from damage. The junction over-temperature threshold is 140°C with 15°C of hysteresis.

**Current Limit Characteristic**



**Figure 2.**

### Inductor

The output inductor is selected to limit the ripple current to some predetermined value, typically 20-40% of the full load current at the maximum input voltage. Manufacturer's specifications list both the inductor DC current rating, which is a thermal limitation, and the peak current rating, which is determined by the saturation characteristics. The inductor should not show any appreciable saturation under all normal load conditions. During over load and short circuit conditions, the average current in the inductor can meet or exceed the  $I_{LIMIT}$  point of the AAT1150 without effecting the converter performance. Some inductors may have sufficient peak and average current ratings yet result in excessive losses due to a high DCR. Always consider the losses associated with the DCR and its effect on the total converter efficiency when selecting an inductor.

For a 1 Amp load and the ripple set to 30% at the maximum input voltage, the maximum peak to peak ripple current is 300 mA. The inductance value required is 3.9 $\mu$ H.

$$L = \frac{V_{OUT}}{I_o \cdot k \cdot F} \cdot \left(1 - \frac{V_{OUT}}{V_{IN}}\right)$$

$$L = \frac{1.5V}{1.0A \cdot 0.3 \cdot 830kHz} \cdot \left(1 - \frac{1.5V}{4.2V}\right)$$

$$L = 3.9\mu H$$

The factor "k" is the fraction of full load selected for the ripple current at the maximum input voltage. The corresponding inductor rms current is:

$$I_{RMS} = \sqrt{\left(I_o^2 + \frac{\Delta I^2}{12}\right)} \approx I_o = 1.0A$$

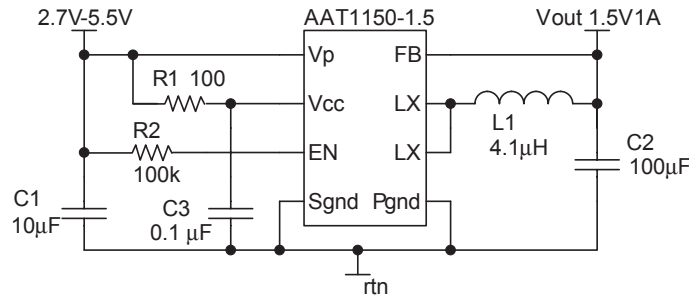
$\Delta I$  is the peak to peak ripple current which is fixed by the inductor selection above. For a peak to peak current of 30% of the full load current the peak current at full load will be 115% of the full load. The 4.1 $\mu$ H inductor selected from the Sumida CDRH5D18 series has a 57 m $\Omega$  DCR and a 1.95 Amp DC current rating. At full load the inductor DC loss is 57mW which amounts to a 3.8% loss in efficiency.

### Input Capacitor

The primary function of the input capacitor is to provide a low impedance loop for the edges of pulsed current drawn by the AAT1150. A low ESR/ESL ceramic capacitor is ideal for this function. To minimize the stray inductance the capacitor should be placed as close as possible to the IC. This keeps the high frequency content of the input current localized, minimizing radiated and conducted EMI while facilitating optimum performance of the AAT1150. Ceramic X5R or X7R capacitors are ideal for this function. The size required will vary depending on the load, output voltage and input voltage source impedance characteristics. A typical value is around 10 $\mu$ F. The input capacitor RMS current varies with the input voltage and the output voltage. The equation for the maximum RMS current in the input capacitor is:

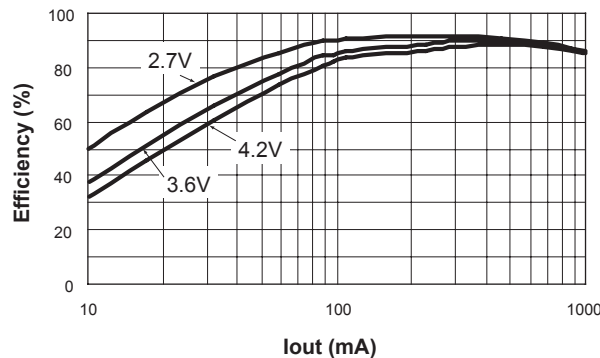
$$I_{RMS} = I_o \cdot \sqrt{\frac{V_o}{V_{IN}} \cdot \left(1 - \frac{V_o}{V_{IN}}\right)}$$

The input capacitor RMS ripple current reaches a maximum when  $V_{IN}$  is two times the output voltage where it is approximately one half of the load current. Losses associated with the input ceramic capacitor are typically minimal and not an issue. The proper placement of the input capacitor can be seen in the reference design layout in figures 6 and 7.



C1 Murata 10μF 6.3V X5R GRM42-6X 5R106K6.3  
 C2 MuRata 100μF 6.3V GRM43-2 X5R 107M 100μF6.3V  
 L1 Sumida CDRH5D18-4R 1μH

**1.5V Efficiency vs. I<sub>OUT</sub>**



**Figure 3: Lithium-Ion to 1.5V converter**

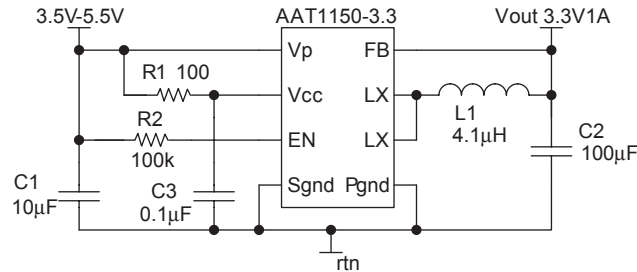
### Output Capacitor

Since there are no external compensation components, the output capacitor has a strong effect on loop stability. Larger output capacitance will reduce the crossover frequency with greater phase margin. For the 1.5V 1A design using the 4.1 μH inductor, a 47μF capacitor provides a stable loop with 35 degrees of phase margin at a crossover frequency of 100 kHz. Doubling the capacitance to 100μF reduces the crossover frequency to half while increasing the phase margin to 60 degrees. In addition to assisting stability, the output capacitor limits the output ripple and provides holdup during large load transitions. A 100uF X5R or X7R ceramic capacitor provides sufficient bulk capacitance to

stabilize the output during large load transitions and has ESR and ESL characteristics necessary for low output ripple. The output capacitor rms ripple current is given by:

$$I_{RMS} = \frac{1}{2 \cdot \sqrt{3}} \cdot \frac{(V_{OUT} + V_{FWD}) \cdot (V_{IN} - V_{OUT})}{L \cdot F \cdot V_{IN}}$$

For a ceramic capacitor the dissipation due to the RMS current of the capacitor is not a concern. Tantalum capacitors, with sufficiently low ESR to meet output voltage ripple requirements, also have an RMS current rating much greater than that actually seen in this application.



C1 Murata 10μF 6.3V X5R GRM42-6X 5R106K6.3  
 C2 MuRata 100μF 6.3V GRM43-2 X5R 107M 100μF 6.3V  
 L1 Sumida CDRH5D18-4R 1μH

### 3.3 Volt Efficiency vs. I<sub>OUT</sub>

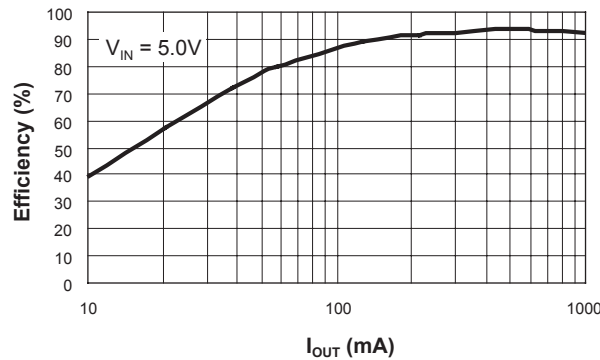


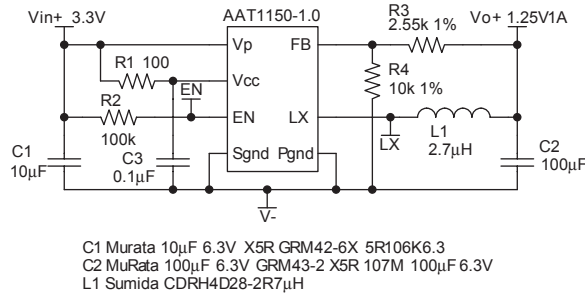
Figure 4: 5V Input to 3.3V Output Converter

### Adjustable Output

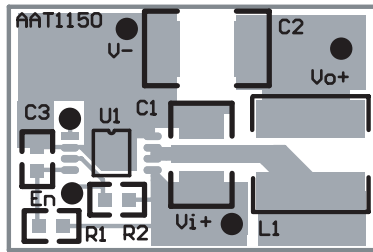
For applications requiring an output other than the fixed outputs available, the 1V version can be programmed externally (see Figure 5). Resistors R3 and R4 force the output to regulate higher than 1 Volt. R4 should be 100 times less than the internal

1 MegOhm resistance of the FB pin. Once R4 is selected R3 can be calculated. For a 1.25V output with R4 set to 10k, R3 is 2.55kΩ.

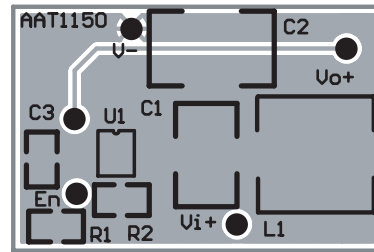
$$R3 = (V_o - 1) \cdot R4 = 0.25 \cdot 10.0k\Omega = 2.55k\Omega$$



**Figure 5: 3.3V to 1.25V converter (Adjustable output)**



**Figure 6: AAT1150 1.5 Volt  
Layout Top Layer**



**Figure 7: AAT1150 1.5 Volt  
Layout Bottom Layer**

### Layout Considerations

Figures 6 and 7 display the suggested PCB layout for the AAT1150. The most critical aspect of the layout is the placement of the input capacitor C1. For proper operation C1 must be placed as close as possible to the AAT1150.

### Thermal Calculations

There are two types of losses associated with the AAT1150 output switching MOSFET, switching losses and conduction losses. The conduction losses are associated with the  $R_{DS(ON)}$  characteristics of the output switching device. At full load, assuming continuous conduction mode (CCM), a simplified form of the total losses is:

$$P_{LOSS} = \frac{I_O^2 \cdot (R_{DS(ON)(H)} \cdot V_O + R_{DS(ON)(L)} \cdot (V_{IN} - V_O))}{V_{IN}} + t_{sw} \cdot F \cdot I_O \cdot V_{IN} + I_Q \cdot V_{IN}$$

Once the total losses have been determined the junction temperature can be derived from the  $\Theta_{JA}$  for the MSOP-8 package.

### Design Example

#### Specifications

$$I_{OUT} = 1.0A$$

$$I_{RIPPLE} = 30\% \text{ of full load at max } V_{IN}$$

$$V_{OUT} = 1.5V$$

$$V_{IN} = 2.7 - 4.2 V \text{ (3.6V nominal)}$$

$$F_s = 830 \text{ kHz}$$

#### Maximum Input Capacitor Ripple:

$$I_{RMS} = I_o \cdot \sqrt{\frac{V_o}{V_{INMAX}} \cdot \left(1 - \frac{V_o}{V_{INMAX}}\right)} = \frac{I_o}{2} = 0.5A_{RMS}$$

$$P = ESR_{COUT} \cdot I_{RMS}^2 = 5m\Omega \cdot 0.5^2 A = 1.25mW$$

#### Inductor Selection:

$$L = \frac{V_{OUT}}{I_o \cdot k \cdot F} \cdot \left(1 - \frac{V_{OUT}}{V_{IN}}\right) = \frac{1.5V}{1.0A \cdot 0.3 \cdot 830kHz} \cdot \left(1 - \frac{1.5V}{4.2V}\right) = 3.9\mu H$$

Select Sumida inductor CDRH5D18 4.1μH 57mΩ 2.0 mm height.

$$\Delta I = \frac{V_o}{L \cdot F} \cdot \left(1 - \frac{V_o}{V_{IN}}\right) = \frac{1.5V}{4.1\mu H \cdot 830kHz} \cdot \left(1 - \frac{1.5V}{4.2V}\right) = 280mA$$

$$I_{PK} = I_{OUT} + \frac{\Delta I}{2} = 1.0A + 0.14A = 1.14A$$

$$P = I_o^2 \cdot DCR = 57mW$$

#### Output Capacitor Dissipation:

$$I_{RMS} = \frac{1}{2 \cdot \sqrt{3}} \cdot \frac{V_{OUT} \cdot (V_{IN} - V_{OUT})}{L \cdot F \cdot V_{IN}} = \frac{1}{2 \cdot \sqrt{3}} \cdot \frac{1.5V \cdot (4.2V - 1.5V)}{4.1\mu H \cdot 830kHz \cdot 4.2V} = 82mA_{RMS}$$

$$P_{ESR} = ESR_{COUT} \cdot I_{RMS}^2 = 5m\Omega \cdot .082^2 A = 33\mu W$$

### AAT1150 Dissipation:

$$P = \frac{I_O^2 \cdot (R_{DSON(H)} \cdot V_O + R_{DSON(L)} \cdot (V_{IN} - V_O))}{V_{IN}} + (t_{sw} \cdot F \cdot I_O + I_Q) \cdot V_{IN}$$

$$= \frac{(0.14\Omega \cdot 1.5V + 0.145\Omega \cdot (3.6V - 1.5V))}{3.6V} + (20\text{nsec} \cdot 830\text{kHz} \cdot 1.0A + 0.3\text{mA}) \cdot 3.6V = 0.203W$$

$$T_{J(MAX)} = T_{AMB} + \Theta_{JA} \cdot P_{LOSS} = 85^\circ\text{C} + 150^\circ\text{C/W} \cdot 0.203W = 115^\circ\text{C}$$

**Table 1: Surface Mount Inductors**

Manufacturer	Part Number	Value	Max DC Current	DCR	Size (mm) L x W x H	Type
TaiyoYuden	NPO5DB4R7M	4.7μH	1.4A	.038	5.9 x 6.1 x 2.8	Shielded
Toko	A914BYW-3R5M-D52LC	3.5μH	1.34A	.073	5.0 x 5.0 x 2.0	Shielded
Sumida	CDRH5D28-4R2	4.2μH	2.2A	.031	5.7 x 5.7 x 3.0	Shielded
Sumida	CDRH5D18-4R1	4.1μH	1.95A	.057	5.7 x 5.7 x 2.0	Shielded
MuRata	LQH55DN4R7M03	4.7μH	2.7A	.041	5.0 x 5.0 x 4.7	Non-shielded
MuRata	LQH66SN4R7M03	4.7μH	2.2A	.025	6.3 x 6.3 x 4.7	Shielded

**Table 2: Surface Mount Capacitors**

Manufacturer	Part Number	Value	Voltage	Temp. Co.	Case
TDK	C4532X5ROJ107M	100μF	6.3V	X5R	1812
MuRata	GRM43-2 X5R 107M 6.3	100μF	6.3V	X5R	1812
MuRata	GRM43-2 X5R 476K 6.3	47μF	6.3V	X5R	1812
MuRata	GRM40 X5R 106K 6.3	10μF	6.3V	X5R	0805
MuRata	GRM42-6 X5R 106K 6.3	10μF	6.3V	X5R	1206



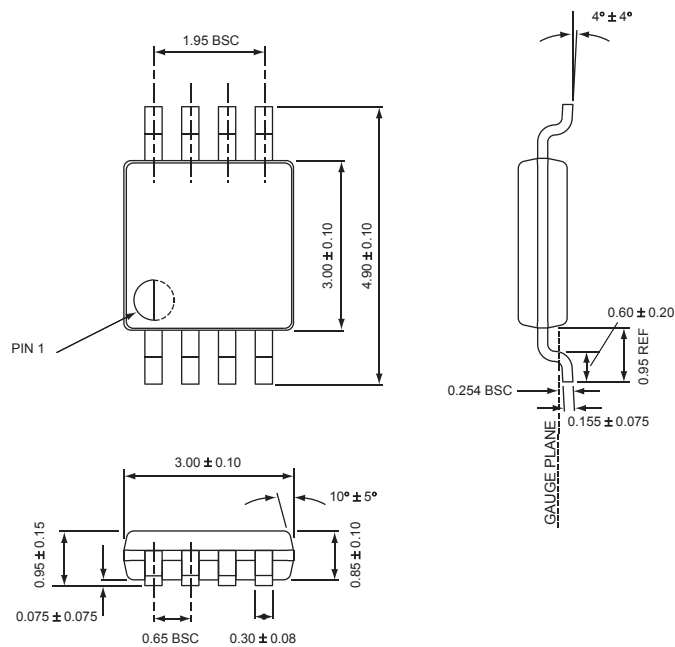
### Ordering Information

Output Voltage	Package	Marking	Part Number (Tape and Reel)
1.0V (Adj $V_{OUT} \geq 1.0V$ )	MSOP-8		AAT1150IKS-1.0-T1
<b>1.5V</b>	<b>MSOP-8</b>		<b>AAT1150IKS-1.5-T1</b>
1.8V	MSOP-8		AAT1150IKS-1.8-T1
2.5V	MSOP-8		AAT1150IKS-2.5-T1
<b>3.3V</b>	<b>MSOP-8</b>		<b>AAT1150IKS-3.3-T1</b>

Note: Sample stock is held on part numbers listed in **bold**. Contact local sales office for custom options.

### Package Information

#### MSOP-8



All dimensions in millimeters.

AnalogicTech cannot assume responsibility for use of any circuitry other than circuitry entirely embodied in an AnalogicTech product. No circuit patent licenses, copyrights, mask work rights, or other intellectual property rights are implied.

AnalogicTech reserves the right to make changes to their products or specifications or to discontinue any product or service without notice, and advise customers to obtain the latest version of relevant information to verify, before placing orders, that information being relied on is current and complete. All products are sold subject to the terms and conditions of sale supplied at the time of order acknowledgement, including those pertaining to warranty, patent infringement, and limitation of liability.

AnalogicTech warrants performance of its semiconductor products to the specifications applicable at the time of sale in accordance with AnalogicTech's standard warranty. Testing and other quality control techniques are utilized to the extent AnalogicTech deems necessary to support this warranty. Specific testing of all parameters of each device is not necessarily performed.

**Advanced Analogic Technologies, Inc.**  
830 E. Arques Avenue, Sunnyvale, CA 94085  
Phone (408) 737-4600  
Fax (408) 737-4611