

# Adaptenuators

50Ω, 3,6,10 dB, DC to 2000 MHz

Type-SMA/BNC  
Type-N/BNC

## Features

- improved interface matching
- wideband, DC-2000 MHz, useable to 4 GHz
- excellent VSWR, 1.1:1 typ.
- excellent flatness, ±0.1 dB typ.
- rugged unibody construction

## Applications

- instrumentation
- provides attenuation and connector type change
- minimizes hardware

## Electrical Specifications

	MODEL NO.	CONNECTOR TYPE		FREQ. (MHz)	ATTENUATION (dB)					VSWR (:1)						CASE STYLE	PRICE \$		
		conn1	conn 2		f <sub>L</sub> -f <sub>U</sub>	Nom.	Flatness*			L	M	U	L	M	U				
							Typ. Max.	Typ. Max.	Typ. Max.									Typ. Max.	Typ. Max.
	SM-BM-3	SMA-Male	BNC-Male	DC-2000	3±0.3	0.05	0.15	0.10	0.20	0.15	0.25	1.1	1.2	1.1	1.2	1.2	1.25	DJ869	19.95
	SM-BM-6	SMA-Male	BNC-Male	DC-2000	6±0.3	0.05	0.15	0.10	0.20	0.15	0.25	1.1	1.2	1.1	1.2	1.2	1.25	DJ869	19.95
	SM-BM-10	SMA-Male	BNC-Male	DC-2000	10±0.3	0.05	0.10	0.10	0.15	0.10	0.20	1.1	1.2	1.1	1.3	1.2	1.25	DJ869	19.95
	SF-BM-3	SMA-Female	BNC-Male	DC-2000	3±0.3	0.05	0.15	0.10	0.20	0.15	0.25	1.1	1.2	1.1	1.2	1.2	1.25	DJ870	19.95
	SF-BM-6	SMA-Female	BNC-Male	DC-2000	6±0.3	0.05	0.15	0.10	0.20	0.15	0.25	1.1	1.2	1.1	1.2	1.2	1.25	DJ870	19.95
	SF-BM-10	SMA-Female	BNC-Male	DC-2000	10±0.3	0.05	0.15	0.10	0.15	0.10	0.20	1.1	1.2	1.1	1.3	1.2	1.25	DJ870	19.95
	SM-BF-3	SMA-Male	BNC-Fem	DC-2000	3±0.3	0.05	0.15	0.10	0.20	0.15	0.25	1.1	1.2	1.1	1.2	1.2	1.25	DJ871	19.95
	SM-BF-6	SMA-Male	BNC-Fem	DC-2000	6±0.3	0.05	0.15	0.10	0.20	0.15	0.25	1.1	1.2	1.1	1.2	1.2	1.25	DJ871	19.95
	SM-BF-10	SMA-Male	BNC-Fem	DC-2000	10±0.3	0.05	0.15	0.10	0.15	0.10	0.20	1.1	1.2	1.1	1.3	1.2	1.25	DJ871	19.95
	SF-BF-3	SMA-Female	BNC-Fem	DC-2000	3±0.3	0.05	0.15	0.10	0.20	0.15	0.25	1.1	1.2	1.1	1.2	1.2	1.25	DJ872	19.95
	SF-BF-6	SMA-Female	BNC-Fem	DC-2000	6±0.3	0.05	0.15	0.10	0.20	0.15	0.25	1.1	1.2	1.1	1.2	1.2	1.25	DJ872	19.95
	SF-BF-10	SMA-Female	BNC-Fem	DC-2000	10±0.3	0.05	0.10	0.10	0.15	0.10	0.20	1.1	1.2	1.1	1.3	1.2	1.25	DJ872	19.95
	NM-BM-3	N-Male	BNC-Male	DC-2000	3±0.3	0.10	0.20	0.20	0.25	0.20	0.30	1.1	1.2	1.1	1.2	1.2	1.30	DJ865	19.95
	NM-BM-6	N-Male	BNC-Male	DC-2000	6±0.3	0.05	0.15	0.15	0.25	0.20	0.25	1.1	1.2	1.1	1.2	1.2	1.25	DJ865	19.95
	NM-BM-10	N-Male	BNC-Male	DC-2000	10±0.3	0.05	0.15	0.15	0.25	0.20	0.25	1.1	1.2	1.1	1.3	1.2	1.25	DJ865	19.95
	NF-BM-3	N-Female	BNC-Male	DC-2000	3±0.3	0.05	0.15	0.10	0.25	0.17	0.25	1.1	1.2	1.1	1.2	1.2	1.25	DJ867	19.95
	NF-BM-6	N-Female	BNC-Male	DC-2000	6±0.3	0.05	0.15	0.10	0.20	0.15	0.25	1.1	1.2	1.1	1.2	1.2	1.25	DJ867	19.95
	NF-BM-10	N-Female	BNC-Male	DC-2000	10±0.3	0.05	0.15	0.10	0.25	0.15	0.30	1.1	1.2	1.1	1.3	1.2	1.25	DJ867	19.95
	NM-BF-3	N-Male	BNC-Fem	DC-2000	3±0.3	0.05	0.15	0.10	0.20	0.15	0.25	1.1	1.2	1.1	1.2	1.2	1.25	DJ866	19.95
	NM-BF-6	N-Male	BNC-Fem	DC-2000	6±0.3	0.05	0.15	0.10	0.20	0.15	0.25	1.1	1.2	1.1	1.2	1.2	1.25	DJ866	19.95
	NM-BF-10	N-Male	BNC-Fem	DC-2000	10±0.3	0.05	0.15	0.15	0.25	0.20	0.30	1.1	1.2	1.1	1.2	1.2	1.25	DJ866	19.95
	NF-BF-3	N-Female	BNC-Fem	DC-2000	3±0.3	0.05	0.15	0.10	0.20	0.15	0.25	1.1	1.2	1.1	1.2	1.2	1.25	DJ868	19.95
	NF-BF-6	N-Female	BNC-Fem	DC-2000	6±0.3	0.05	0.15	0.10	0.20	0.15	0.25	1.1	1.2	1.1	1.2	1.2	1.25	DJ868	19.95
	NF-BF-10	N-Female	BNC-Fem	DC-2000	10±0.3	0.05	0.15	0.10	0.15	0.10	0.20	1.1	1.2	1.1	1.3	1.2	1.25	DJ868	19.95

\* Flatness defined as peak to peak attenuation over band divided by 2

L= DC-500 MHz M= DC-1000 MHz U= DC- f<sub>U</sub> MHz

## Maximum Ratings

Operating Temperature	-55°C to 100°C
Storage Temperature	-55°C to 100°C
Input Power	0.5W Max.

REV. A  
M83075  
N/BNC EE-9890  
SMA/BNC EE-9890  
ADPTENUATOR  
URJ/TD/CP  
020906  
Page 1 of 2



INTERNET <http://www.minicircuits.com>

P.O. Box 350166, Brooklyn, New York 11235-0003 (718) 934-4500 Fax (718) 332-4661

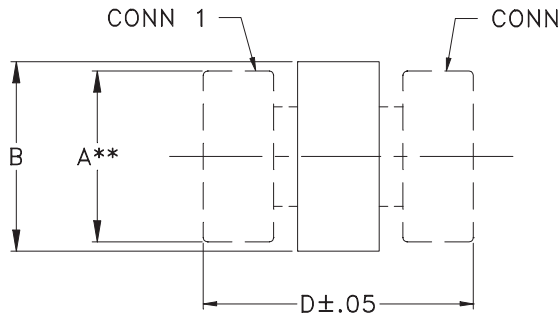
Distribution Centers NORTH AMERICA 800-654-7949 • 417-335-5935 • Fax 417-335-5945 • EUROPE 44-1252-832600 • Fax 44-1252-837010

ISO 9001 CERTIFIED

# Adaptenuators

Type-SMA/BNC  
Type-N/BNC

## Outline Drawing



\*\* DIM IS ACROSS FLATS  
B - OVERALL ADAPTER DIMENSION  
BODY/CONNECTOR SHAPE VARIES

## Outline Dimensions (inch mm)

Case No.	A	B	D	wt. grams
DJ865	.812 20.62	.88 22.35	2.25 57.15	63.8
DJ866	.812 20.62	.88 22.35	2.03 51.56	57.0
DJ867	— —	.73 18.54	2.00 50.80	48.2
DJ868	— —	.73 18.54	1.79 45.47	40.2
DJ869	.312 7.92	.61 15.49	1.89 48.01	25.8
DJ870	— —	.61 15.49	1.69 42.93	24.0
DJ871	.312 7.92	.55 13.97	1.68 42.67	18.8
DJ872	— —	.55 13.97	1.47 37.34	16.2



Mini-Circuits®

INTERNET <http://www.minicircuits.com>

P.O. Box 350166, Brooklyn, New York 11235-0003 (718) 934-4500 Fax (718) 332-4661

Distribution Centers NORTH AMERICA 800-654-7949 • 417-335-5935 • Fax 417-335-5945 • EUROPE 44-1252-832600 • Fax 44-1252-837010

ISO 9001 CERTIFIED