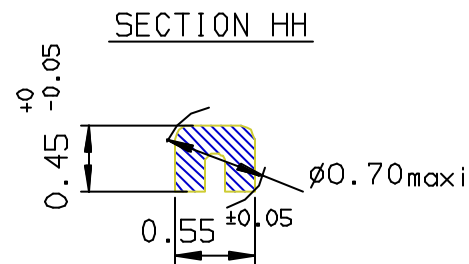
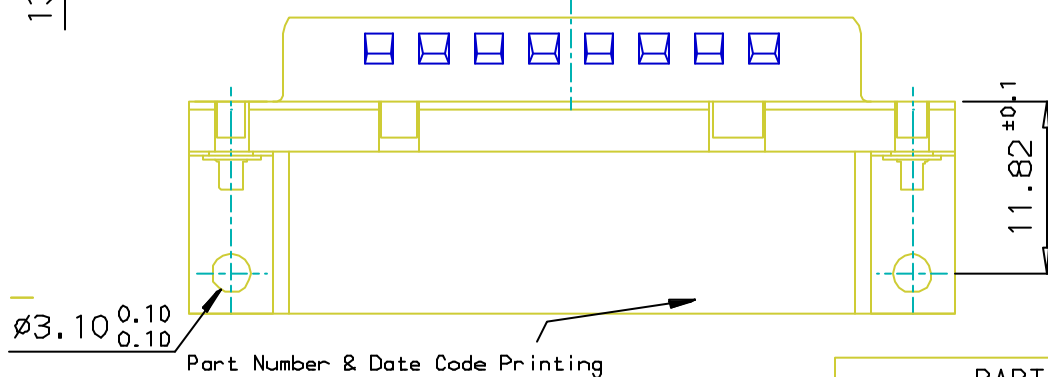
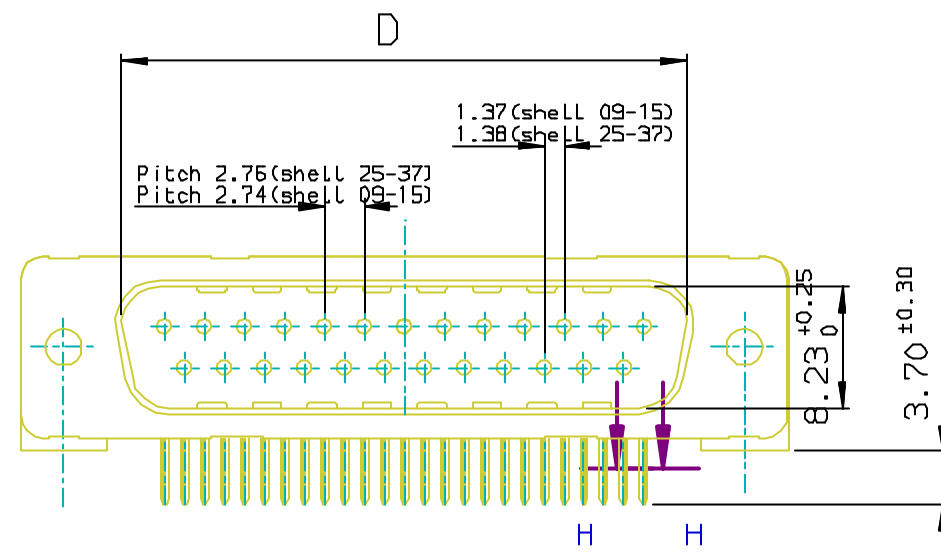
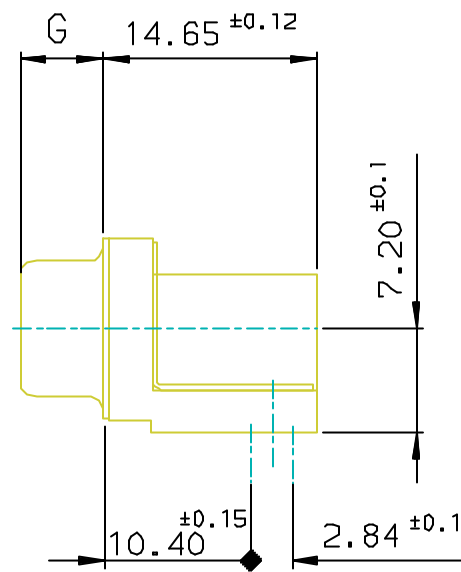
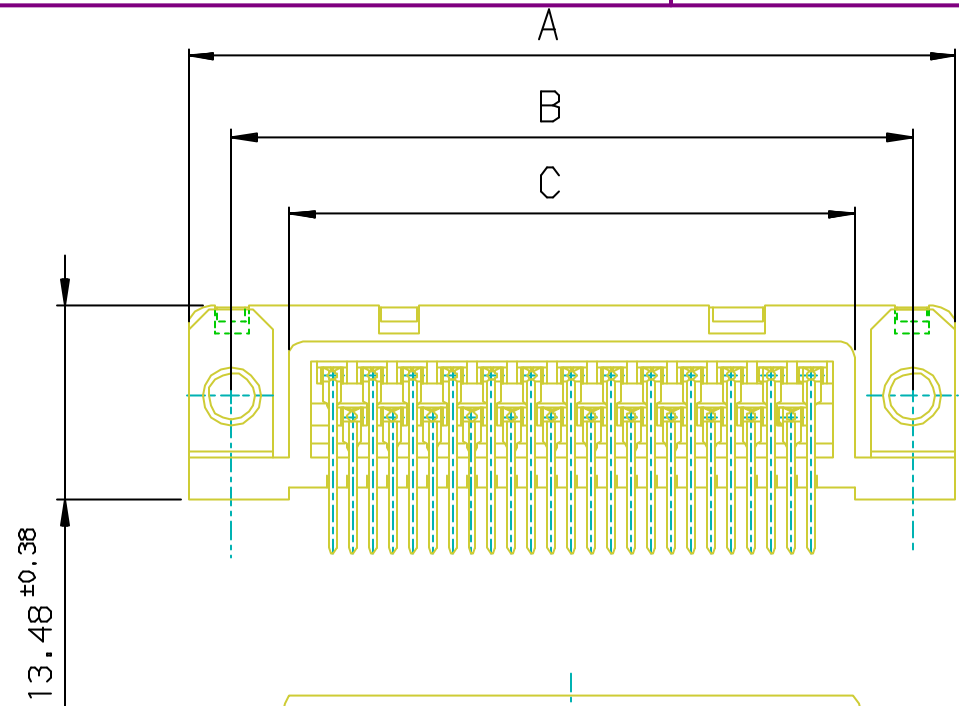
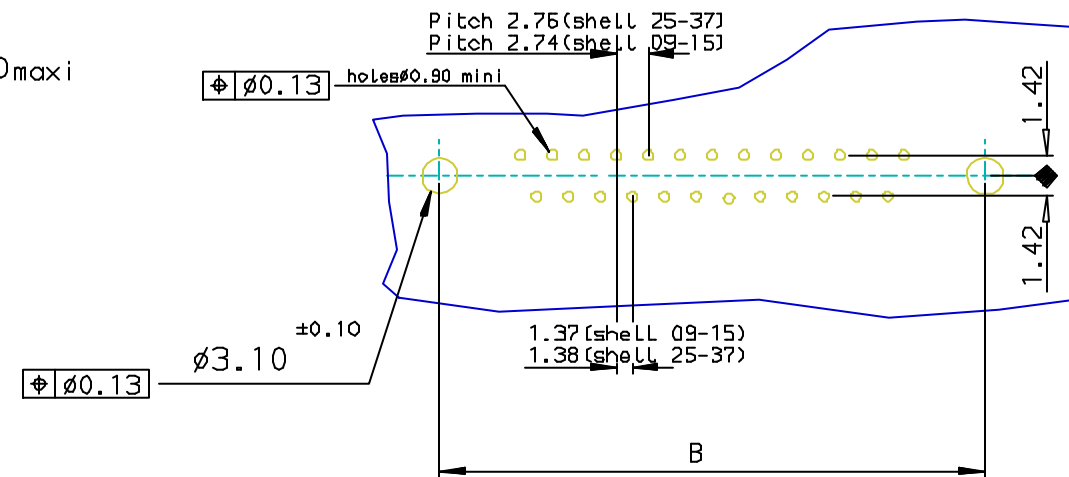




Copyright FCI.



PC card drilling dimensions(after plating)
(thickness 1.60±0.20mm)



SHELL	PART NUMBER					Plating:0.76µ AU	Plating:Flash AU
	A±0.38	B±0.12	C±0.10	D±0.25	G±0.25		
09	30.81	24.99	16.96	16.79	5.90	D09P23B6UA00**	D09P23B4UA00**
15	39.14	33.32	25.18	25.12	5.90	D15P23B6UA00**	D15P23B4UA00**
25	53.03	47.04	39.12	38.84	5.70	D25P23B6UA00**	D25P23B4UA00**
37	69.32	63.50	55.68	55.30	5.70	D37P23B6UA00**	D37P23B4UA00**

REQUIREMENTS

Technical characteristics:

Shell:steel tin/Zinc Cr3 plated
 Insulators:self-extinguishing black polyester,ULclass94V0
 Contacts size 20,brass,gold on mating end,bright tin on termination end over nickel on entire contact
 Cycles :500 for protection 6
 :200 for protection 4

Metal plate for electrical continuity:brass,tin/Zinc Cr3 plated

Electrical characteristics:

max.current rating:5A
 Test voltage:1000V
 Rated voltage:300V
 Contact resistance:<15mΩ
 Shell resistance:<5mΩ
 Insulation resistance:≥5000MΩ

Climatic characteristics:

Operating temperature range:-55°C +125°C

Dimensions:

in accordance with MIL-C-24308

LF FOR LEAD FREE

FOR ROHS DETAILS REFER DWG.NO:C01-8646-0000

European Views

rev	ecn no	dr	date
B	105-0124	JS	2005/07/27
C	106-0074	SK	2006/06/08
-	-	-	-
-	-	-	-
-	-	-	-
-	-	-	-

www.fciconnect.com		surface ISO 1302 ✓	tolerance std ISO 406 ISO 1101	projection mm
TOLERANCES UNLESS OTHERWISE SPECIFIED				
Dr	JOHN SLEEBA	2000/11/21	ANGULAR	LINEAR
Eng	GEORGE VJ	2000/11/21	0.X	±0.1
Chr	GEORGE VJ	2005/07/27	0.XX	±0.1
Appr	KVSD	2005/07/27	0.XXX	±0.1
Product family			D-SUB	
title			Spec ref -	
MALE CONNECT.DELTA D WITH METAL PLATE.			-	
catalog no			DELTA-D	
dwg no			C01-8646-0737	
Rev.			C	
CUSTOMER			sheet 1 of 1	

REV F - 2006-04-17