

# Amphenol

## D Subminiature Interconnects

### DSub SD/G17S Series Solder-pot Type for Low Volume Terminations

Most popular Part Numbers noted below. Both SD and G17S conform to Mil-C-24308. SD is supplied from Europe while G17S is supplied from ASIA.

#### Electrical

Current – 5A  
Voltage – 250VAC/rms 60Hz

#### Mechanical

Durability – 75 Cycles

#### Materials

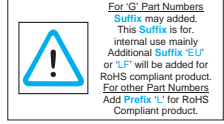
SD – Tin plated Steel  
G17S – Tin/Lead over Nickel plated Carbon Steel  
Insulator – 94V-0 thermoplastic  
Contacts Pin – Brass  
Contacts Sockets – Phosphor Bronze  
Finish – Gold Flash  
Board-locks – P/B  
Screw-locks – Brass

#### Available Upon Request

- ▶ 50 Way Versions
- ▶ Various Contact Finishes: 15µ" Au, 30µ" Au
- ▶ Various Shell Finishes: Zinc Chromate or Nickel
- ▶ Various Screw Locks: #4-40, M3

#### Accessories

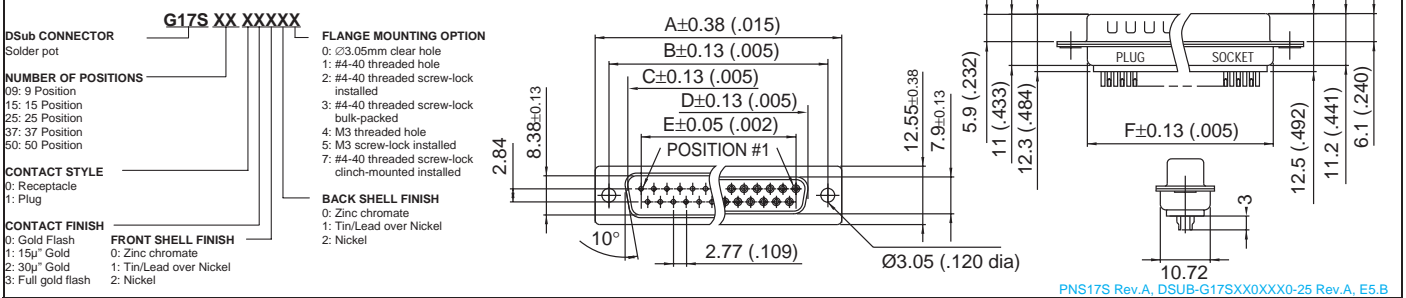
Hoods – Page F-9



Common Parts		SD	G17S	Dimensions (mm)				
Gender	Positions	Part Number:	Part Number:	A	B	C	D	E
Male	9 Way	717SDE09P	G17S0910110	30.84	24.99	16.92	16.24	19.28
	15 Way	717SDA15P	G17S1510110	39.24	33.32	24.70	24.56	27.51
	25 way	717SDB25P	G17S2510110	53.04	47.04	38.96	38.38	41.30
	37 Way	717SDC37P	G17S3710110	69.32	63.50	55.42	54.76	57.71
Female	9 Way	77SDE09S	G17S0900110	30.84	24.99	16.92	16.24	19.28
	15 Way	77SDA15S	G17S1500110	39.24	33.32	24.70	24.56	27.51
	25 way	77SDB25S	G17S2500110	53.04	47.04	38.96	38.38	41.30
	37 Way	77SDC37S	G17S3700110	69.32	63.50	55.42	54.76	57.71

#### Detailed Part Number System

#### Common Part Specifications



### DSub RR/G17R Rear Release Crimp Contact Type for High Volume Termination

Most popular Part Numbers noted below. Both RR and G17R conform to Mil-C-24308. RR is supplied from Europe while G17R is supplied from ASIA.

#### Electrical

Current – 5A  
Voltage – 250VAC/rms 60Hz

#### Accessories

– Hoods Page F-9

#### Materials

RR – Tin plated Steel  
G17R – Tin/Lead over Nickel plated Carbon Steel  
Insulator – 94V-0 thermoplastic  
Contacts Pin – Brass  
Contacts Sockets – Phosphor Bronze  
Finish – Gold Flash  
Durability – 75 Cycles

#### Available Upon Request

- ▶ 50 Way Versions
- ▶ Various Contact Finishes: 15µ" Au, 30µ" Au
- ▶ Various Shell Finishes: Zinc Chromate or Nickel
- ▶ Various Screw Locks: #4-40, M3

#### Tools (RR Series only)

Insertion/Removal Tool- 17D438SP  
Crimp Machine - 970MC  
Crimp Die 20-24AWG - 968MC  
Crimp Die 24-28AWG - 972MC

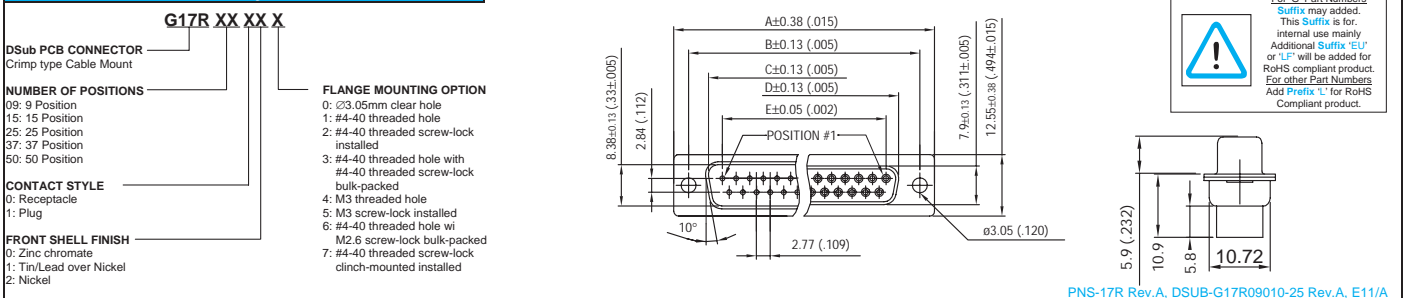
Common Parts		RR	G17R	Dimensions (mm)					
Gender	Positions	Part Number:	Part Number:	A	B	C	D	E	F
Male	9 Way	777RRE09P	G17R091100	30.84	24.99	16.92	16.24	11.09	19.28
	15 Way	777RRA15P	G17R151100	39.24	33.32	24.70	24.56	19.39	27.51
	25 way	777RRB25P	G17R251100	53.04	47.04	38.96	38.38	33.24	41.30
	37 Way	777RRC37P	G17R371100	69.32	63.50	55.42	54.76	49.86	57.71
Female	9 Way	177RRE09S	G17R090100	30.84	24.99	16.92	16.24	11.09	19.28
	15 Way	177RRA15S	G17R150100	39.24	33.32	24.70	24.56	19.39	27.51
	25 way	177RRB25S	G17R250100	53.04	47.04	38.96	38.38	33.24	41.30
	37 Way	177RRC37S	G17R370100	69.32	63.50	55.42	54.76	49.86	57.71

#### Crimp Contacts

Pins for Male Hse.	Part Number:	17RRD1M110G	17RRD2M110G	G17RC10141	G17RC10142	G17RC10143
Sockets for Female Hse.	Part Number:	17RRD1F110G	17RRD2F110G	G17RC00141	G17RC00142	G17RC00143

#### Detailed Part Number System

#### Common Part Specifications



ASF-D/AMTA

PNS-17R Rev.A, DSub-G17R09010-25 Rev.A, E11/A