

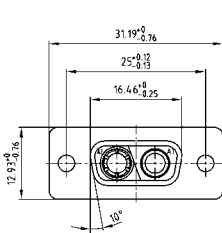
# C-FILTER COMBINATION D-SUB 2W2C

Solder pin – Straight – Precision machined contacts

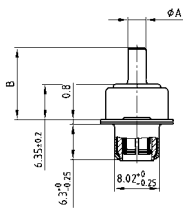


RoHS compliant – UL listed, File No.: E228329

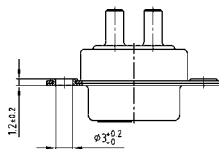
## SOCKET CONNECTOR



Termination code	Current rating	Ø A	B ± 0.3	PCB thickness
48	20A	1.95	9.65	1.6
49	20A	2.60	10.65	1.6
50	20A	2.85	10.05	1.6
51	30A	3.18	12.85	1.6/ 2.3/ 3.2
52	40A	3.75	11.10	1.6/ 2.3/ 3.2



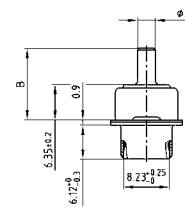
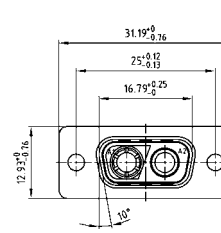
Mounting style: Through-hole



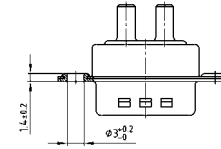
## DESCRIPTION

- Coded design = 1 plug and 1 socket contact
- 707 VDC (other DWV on request)
- Mounting styles:
  - with through-hole Ø .118"/3.0 mm
  - with 4-40 UNC or M3 threaded insert\*
  - with 4-40 UNC or M3 threaded rear spacer\*
  - with 4-40 UNC or M3 threaded rear spacer with PCB clip\*, .291"/7.4\*\*mm
- Quality class 3 (also available in quality class 1)
- Shell: Steel tin plated, optionally brass tin plated
- Consists of selective plated contacts

## PLUG CONNECTOR



Mounting style: Through-hole



## ORDER DATA

SOCKET CONNECTOR				
Type	Mounting style	Ø A	Capacitance	Part Number
2W2C	Through-hole	.080"/1.95	47 nF	2F2C SA 22 S48A10 X
2W2C	Through-hole	.102"/2.60	47 nF	2F2C SA 22 S49A10 X
2W2C	Through-hole	.110"/2.85	47 nF	2F2C SA 22 S50A10 X
2W2C	Through-hole	.130"/3.18	47 nF	2F2C SA 22 S51A10 X
2W2C	Through-hole	.150"/3.75	47 nF	2F2C SA 22 S52A10 X

PLUG CONNECTOR				
Type	Mounting style	Ø A	Capacitance	Part Number
2W2C	Through-hole	.080"/1.95	47 nF	2F2C PA 22 S48A10 X
2W2C	Through-hole	.102"/2.60	47 nF	2F2C PA 22 S49A10 X
2W2C	Through-hole	.110"/2.85	47 nF	2F2C PA 22 S50A10 X
2W2C	Through-hole	.130"/3.18	47 nF	2F2C PA 22 S51A10 X
2W2C	Through-hole	.150"/3.75	47 nF	2F2C PA 22 S52A10 X

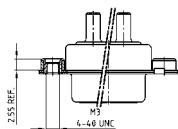
For other capacitance values refer to the part number creator.

Capacitance value	Code
100 nF	28
47 nF	22
12 nF	14
10 nF	12
5 nF	08
1.3 nF	05

# C-FILTER COMBINATION D-SUB 2W2C – Mounting styles

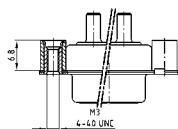
Solder pin – Straight – Precision machined contacts

ORDER DATA



SOCKET CONNECTOR				
Type	Mounting style 4-40 UNC	Ø A	Capacitance	Part Number
2W2C	Threaded insert	.080"/1.95	47 nF	2F2C SA 22 S48A30 X
2W2C	Threaded insert	.102"/2.60	47 nF	2F2C SA 22 S49A30 X
2W2C	Threaded insert	.110"/2.85	47 nF	2F2C SA 22 S50A30 X
2W2C	Threaded insert	.130"/3.18	47 nF	2F2C SA 22 S51A30 X
2W2C	Threaded insert	.150"/3.75	47 nF	2F2C SA 22 S52A30 X

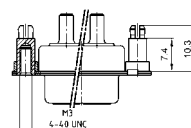
PLUG CONNECTOR				
Type	Mounting style 4-40 UNC	Ø A	Capacitance	Part Number
2W2C	Threaded insert	.080"/1.95	47 nF	2F2C PA 22 S48A30 X
2W2C	Threaded insert	.102"/2.60	47 nF	2F2C PA 22 S49A30 X
2W2C	Threaded insert	.110"/2.85	47 nF	2F2C PA 22 S50A30 X
2W2C	Threaded insert	.130"/3.18	47 nF	2F2C PA 22 S51A30 X
2W2C	Threaded insert	.150"/3.75	47 nF	2F2C PA 22 S52A30 X



SOCKET CONNECTOR				
Type	Mounting style 4-40 UNC	Ø A	Capacitance	Part Number
2W2C	Threaded rear spacer	.080"/1.95	47 nF	2F2C SA 22 S48A50 X
2W2C	Threaded rear spacer	.102"/2.60	47 nF	2F2C SA 22 S49A50 X
2W2C	Threaded rear spacer	.110"/2.85	47 nF	2F2C SA 22 S50A50 X
2W2C	Threaded rear spacer	.130"/3.18	47 nF	2F2C SA 22 S51A50 X
2W2C	Threaded rear spacer	.150"/3.75	47 nF	2F2C SA 22 S52A50 X

PLUG CONNECTOR				
Type	Mounting style 4-40 UNC	Ø A	Capacitance	Part Number
2W2C	Threaded rear spacer	.080"/1.95	47 nF	2F2C PA 22 S48A50 X
2W2C	Threaded rear spacer	.102"/2.60	47 nF	2F2C PA 22 S49A50 X
2W2C	Threaded rear spacer	.110"/2.85	47 nF	2F2C PA 22 S50A50 X
2W2C	Threaded rear spacer	.130"/3.18	47 nF	2F2C PA 22 S51A50 X
2W2C	Threaded rear spacer	.150"/3.75	47 nF	2F2C PA 22 S52A50 X

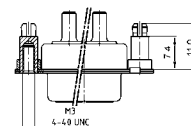
.291" / 7.4 mm for .063" / 1.6 mm circuit board thickness. (Length of spacer .256" / 6.5 mm on request)



SOCKET CONNECTOR				
Type	Mounting style 4-40 UNC	Ø A	Capacitance	Part Number
2W2C	Threaded rear spacer PCB clip	.080"/1.95	47 nF	2F2C SA 22 S48E20 X
2W2C	Threaded rear spacer PCB clip	.102"/2.60	47 nF	2F2C SA 22 S49E20 X
2W2C	Threaded rear spacer PCB clip	.110"/2.85	47 nF	2F2C SA 22 S50E20 X
2W2C	Threaded rear spacer PCB clip	.130"/3.18	47 nF	2F2C SA 22 S51E20 X
2W2C	Threaded rear spacer PCB clip	.150"/3.75	47 nF	2F2C SA 22 S52E20 X

PLUG CONNECTOR				
Type	Mounting style 4-40 UNC	Ø A	Capacitance	Part Number
2W2C	Threaded rear spacer PCB clip	.080"/1.95	47 nF	2F2C PA 22 S48E20 X
2W2C	Threaded rear spacer PCB clip	.102"/2.60	47 nF	2F2C PA 22 S49E20 X
2W2C	Threaded rear spacer PCB clip	.110"/2.85	47 nF	2F2C PA 22 S50E20 X
2W2C	Threaded rear spacer PCB clip	.130"/3.18	47 nF	2F2C PA 22 S51E20 X
2W2C	Threaded rear spacer PCB clip	.150"/3.75	47 nF	2F2C PA 22 S52E20 X

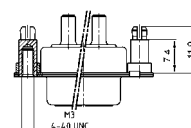
.291" / 7.4 mm for .091" / 2.3 mm circuit board thickness. (Length of spacer .256" / 6.5 mm on request)



SOCKET CONNECTOR				
Type	Mounting style 4-40 UNC	Ø A	Capacitance	Part Number
2W2C	Threaded rear spacer PCB clip	.130"/3.18	47 nF	2F2C SA 22 S51E40 X
2W2C	Threaded rear spacer PCB clip	.150"/3.75	47 nF	2F2C SA 22 S52E40 X

PLUG CONNECTOR				
Type	Mounting style 4-40 UNC	Ø A	Capacitance	Part Number
2W2C	Threaded rear spacer PCB clip	.130"/3.18	47 nF	2F2C PA 22 S51E40 X
2W2C	Threaded rear spacer PCB clip	.150"/3.75	47 nF	2F2C PA 22 S52E40 X

.291" / 7.4 mm for .126" / 3.2 mm circuit board thickness. (Length of spacer .256" / 6.5 mm on request)



SOCKET CONNECTOR				
Type	Mounting style 4-40 UNC	Ø A	Capacitance	Part Number
2W2C	Threaded rear spacer PCB clip	.130"/3.18	47 nF	2F2C SA 22 S51E60 X
2W2C	Threaded rear spacer PCB clip	.150"/3.75	47 nF	2F2C SA 22 S52E60 X

PLUG CONNECTOR				
Type	Mounting style 4-40 UNC	Ø A	Capacitance	Part Number
2W2C	Threaded rear spacer PCB clip	.130"/3.18	47 nF	2F2C PA 22 S51E60 X
2W2C	Threaded rear spacer PCB clip	.150"/3.75	47 nF	2F2C PA 22 S52E60 X

For other capacitance values refer to the part number creator.