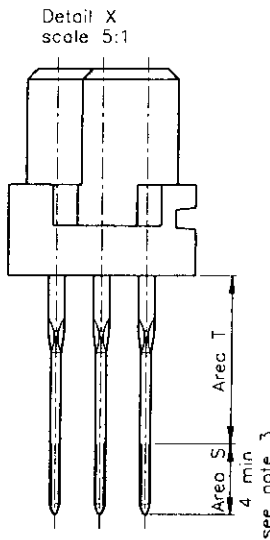
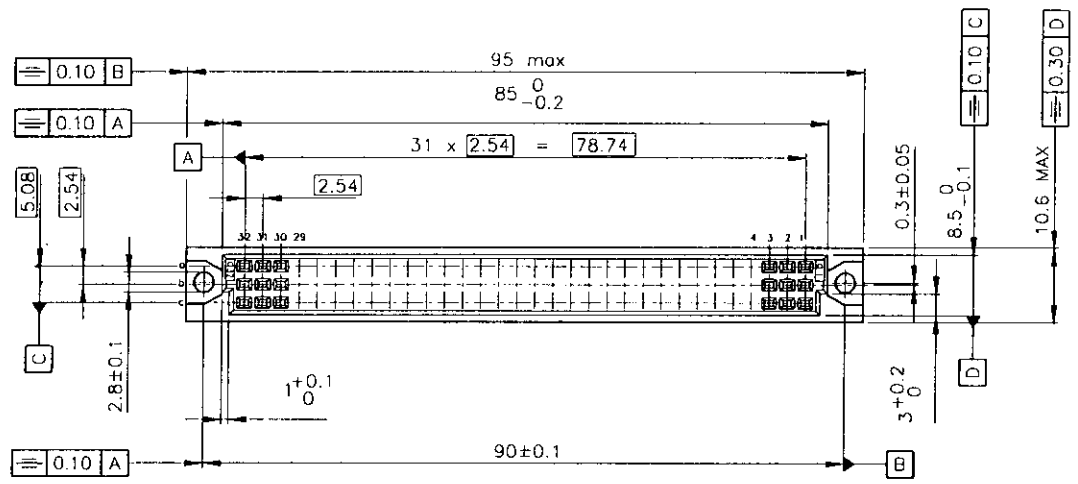
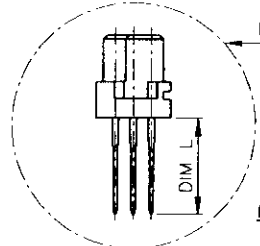
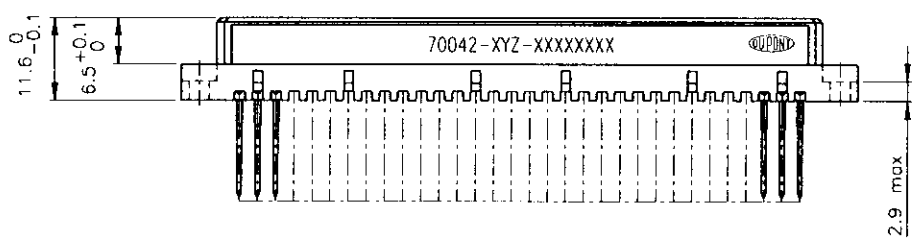


Product number See sheet 2 of 2



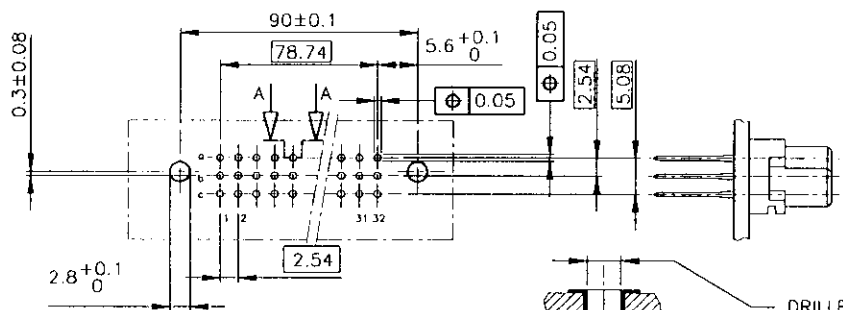
see note 3



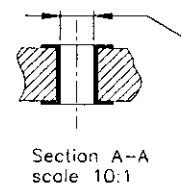
Detail X

NOTES:

- 1 MATERIAL BODY: THERMOPLASTIC POLYESTER 30% GLASS FILLED  
COLOUR GREY, FLAME RETARDANT PER UL-94-V0  
MATERIAL TERMINAL: PHOSPHOR BRONZE
  - 2 FOR PLATING CONTACT AREA FEMALE PART SEE TABLE
  - 3 UNDERPLATING 2 µm Ni ALL OVER
  - 4 CONTACT LENGTH S ONLY FOR REAR PLUG UP  
SEE TA 841.
  - 5 LASER PRINTING CONSISTS OF 70042-XYZ-XXXXXXX
- PRODUCT NUMBER \_\_\_\_\_  
 PLATING CODE \_\_\_\_\_  
 TERMINAL CODE \_\_\_\_\_  
 LOADING CODE \_\_\_\_\_  
 BATCH CODE \_\_\_\_\_



P.C. MOUNTING HOLE PATTERN



DRILLED HOLE  $\phi 1.15 \pm 0.025$  DIAMETER  
 COPPER PLATING 25 µm MIN-75 µm MAX  
 TIN-LEAD PLATING 5 µm MIN-15 µm MAX  
 FINISHED HOLE  $\phi 0.94$  MIN- $\phi 1.09$  MAX DIAMETER

part code		see notes		tolerances unless otherwise specified		CUSTOMER COPY		BERG ELECTRONICS	
lin	rev no	dr	date	linear		projection	hite	PREL DIN FEM PRESS FIT	
A	H10087	MV	910306			$\phi$		product family	BACK PANEL
B	H40089	ML	940204			mm	size	thg no	code
C	T50806	DMA	95.11.02	angles		scale	A2	70042	213
D	F60020	DMA	96.01.09			2:1	sheet		1 of 2
sheet	revision	D	C						
index	sheet	1	7						

PRODUCT NO	PIN "X" PLACED IN POSITION																															REMARKS				
	ROW	1	2	3	4	5	6	7	8	9	10	11	12	13	14	15	16	17	18	19	20	21	22	23	24	25	26	27	28	29	30		31	32		
70042 - XY1	a		X		X		X		X		X		X		X		X		X		X		X		X		X		X		X		X		X	
	b																																			
	c	X		X		X		X		X		X		X		X		X		X		X		X		X		X		X		X		X		
70042 - XY2	a	X		X		X		X		X		X		X		X		X		X		X		X		X		X		X		X		X		
	b																																			
	c	X		X		X		X		X		X		X		X		X		X		X		X		X		X		X		X		X		
70042 - XY3	a	X		X		X		X		X		X		X		X		X		X		X		X		X		X		X		X		X		
	b																																			
	c	X		X		X		X		X		X		X		X		X		X		X		X		X		X		X		X		X		
70042 - XY4	a	X		X		X		X		X		X		X		X		X		X		X		X		X		X		X		X		X		
	b	X		X		X		X		X		X		X		X		X		X		X		X		X		X		X		X		X		
	c	X		X		X		X		X		X		X		X		X		X		X		X		X		X		X		X		X		
70042 - XY5	a	X	X	X	X	X	X	X	X	X	X	X	X	X	X	X	X	X	X	X	X	X	X	X	X	X	X	X	X	X	X	X	X	X		
	b																																			
	c	X	X	X	X	X	X	X	X	X	X	X	X	X	X	X	X	X	X	X	X	X	X	X	X	X	X	X	X	X	X	X	X	X	X	
70042 - XY6	a																																			
	b	X	X	X	X	X	X	X	X	X	X	X	X	X	X	X	X	X	X	X	X	X	X	X	X	X	X	X	X	X	X	X	X	X	X	
	c																																			
70042 - XY7	a																																			
	b	X	X	X	X	X	X	X	X	X	X	X	X	X	X	X	X	X	X	X	X	X	X	X	X	X	X	X	X	X	X	X	X	X	X	
	c	X	X	X	X	X	X	X	X	X	X	X	X	X	X	X	X	X	X	X	X	X	X	X	X	X	X	X	X	X	X	X	X	X	X	X
70042 - XY8	a		X		X		X		X		X		X		X		X		X		X		X		X		X		X		X		X		X	
	b	X		X		X		X		X		X		X		X		X		X		X		X		X		X		X		X		X		X
	c		X		X		X		X		X		X		X		X		X		X		X		X		X		X		X		X		X	
70042 - XY9	a	X	X	X	X	X	X	X	X	X	X	X	X	X	X	X	X	X	X	X	X	X	X	X	X	X	X	X	X	X	X	X	X	X	X	
	b	X	X	X	X	X	X	X	X	X	X	X	X	X	X	X	X	X	X	X	X	X	X	X	X	X	X	X	X	X	X	X	X	X	X	
	c	X	X	X	X	X	X	X	X	X	X	X	X	X	X	X	X	X	X	X	X	X	X	X	X	X	X	X	X	X	X	X	X	X	X	X
70042 - XY0	a	X	X	X	X	X	X	X	X	X	X	X	X	X	X	X	X	X	X	X	X	X	X	X	X	X	X	X	X	X	X	X	X	X	X	
	b	X	X	X	X	X	X	X	X	X	X	X	X	X	X	X	X	X	X	X	X	X	X	X	X	X	X	X	X	X	X	X	X	X	X	
	c	X	X	X	X	X	X	X	X	X	X	X	X	X	X	X	X	X	X	X	X	X	X	X	X	X	X	X	X	X	X	X	X	X	X	X

NOTE:

THERE IS NO CONTACT AREA S ON SHORT TAILS LENGTH L = 5 mm

-6YZ	2 μm Au min	2-5 μm SnPb	1-3 μm SnPb
-5YZ	1 μm Au min	2-5 μm SnPb	1-3 μm SnPb
-4YZ	0.5 μm Au min	2-5 μm SnPb	1-3 μm SnPb
-3YZ	2 μm Au min	1.25 μm Au min	0.03 μm Au min
-2YZ	1 μm Au min	0.8 μm Au min	0.03 μm Au min
-1YZ	0.5 μm Au min	0.4 μm Au min	0.03 μm Au min
PLATING CODE X	CONTACT AREA FEMALE PART	CONTACT AREA S FRONT AND REAR SIDE	AREA T

-X2Z	13
-X1Z	5
TERMINAL CODE Y	DIM L

part code		tolerances unless otherwise specified		CUSTOMER COPY		BERG ELECTRONICS	
itr	ecn no	dr	date	linear		projection	title
A	H10087	MAN	910306				PREL DIN FEM
B	H40089	MLO	940204				PRESS FIT
C	F60020	OMA	96.01.09	angles		mm	product family BACK PANEL
		eng	J. vd Hovdt	871001			code 21.3
		eng	M. Loman	940203			size dwg no
		ctr	M. Loman	871001		scale N/A	A2 70042
		app	M. Loman	940203			sheet 2 of
steel index	revision	sheet					