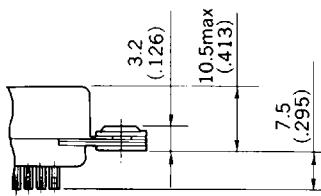
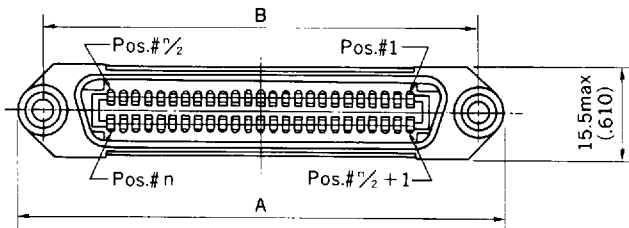


# 57 Series

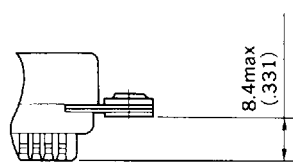


## ● Receptacles

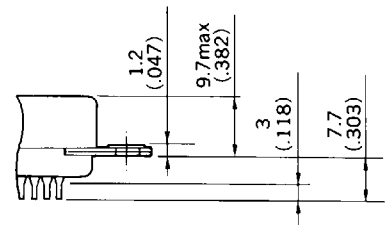
Unit:mm(inch)



Solder cup type



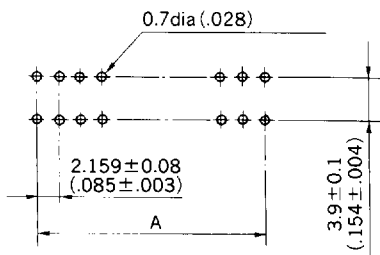
High-barrier type



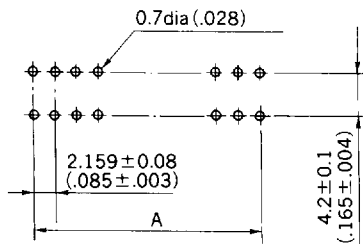
Dip solder type  
(less float bushing)

NO. OF CONT'S	With float bushing		less float bushing		A	B
	3.1(.122)dia mounting hole		4.6(.181)dia mounting hole			
	Solder cup	High-barrier	Solder cup	Dip solder		
14	57-2014×	57-2014×R	57-2014×-D25	57-2014×-8	43.9 (1.728)	36.0 (1.417)
24	57-2024×	57-2024×R	57-2024×-D25	57-2024×-8	54.7 (2.154)	46.8 (1.843)
36	57-2034×	57-2036×R	57-2036×-D25	57-2036×-9	67.7 (2.665)	59.7 (2.350)
50	57-2050×	57-2050×R	57-2050×-D25	57-2050×-31	82.8 (3.260)	74.9 (2.949)
64	—	57-20640	—	—	98.0 (3.858)	90.0 (3.543)

## PCB mounting dimensions



Plug



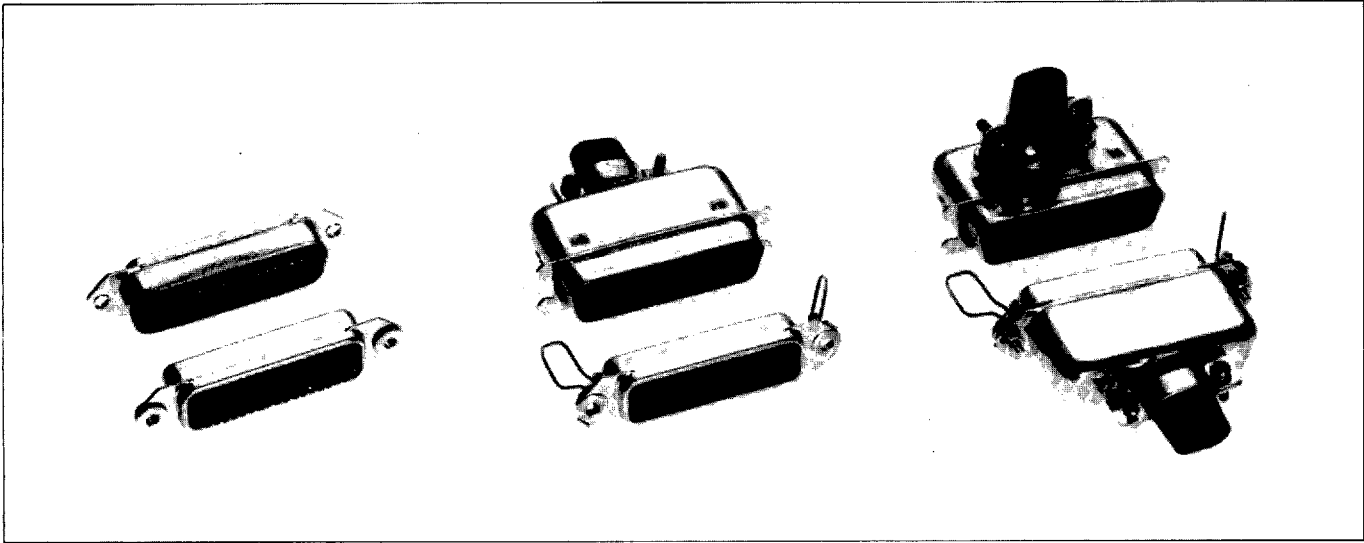
Receptacle

NO. OF CONT'S	A±0.12(±.005)
14	12.96 (.510)
24	23.76 (.935)
36	36.72 (1.446)
50	51.84 (2.041)

# 57 Series



## Basic version of ribbon connectors Solder type



### FEATURES

- Stable connection by self-wiping and self-cleaning mechanism
- Available in various styles
- UL recognized (File No.E72124)
- Intermateable with 57 family connectors

### SPECIFICATIONS

Rated voltage .....500V AC/700V DC  
Rated current .....5A/contact  
Dielectric withstanding ...1200V AC (r.m.s.)  
voltage 1 minute  
Insulation resistance .....1000M $\Omega$  min.  
at 500V DC  
Wire accommodation .....Solid : 22 AWG max.  
Stranded : 24 AWG max.

### MATERIAL/FINISH

Contact .....Copper alloy/Gold plate  
Shell .....Brass/Nickel plate  
Insulator .....Diallyl phthalate resin  
(UL94V-0)  
Spring latch .....Stainless steel

## Ordering Information

**57-10 36 0 R-xxx**

### CONNECTOR STYLE

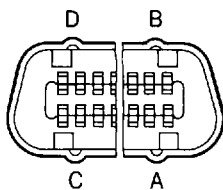
- 10 : Rack and Panel Plug
- 20 : Rack and Panel receptacle
- 30 : Cable plug,  
top cable entry
- 40 : Panel receptacle with spring  
latches
- 50 : Cable plug,  
side cable entry
- 60 : Cable receptacle with  
spring latches

### NO. OF CONTACTS

- 14, 24, 36, 50
- 64 (high barrier only)

### KEY POSITION

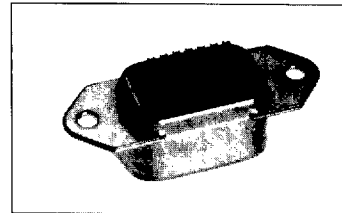
- 0 : No key
- 1 : "A" position
- 2 : "B" position
- 3 : "C" position
- 4 : "D" position



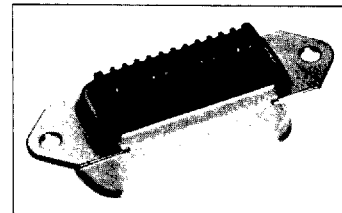
### DEVIATION

### HOUSING STYLE

- NO designation : Solder cup and dip solder type  
64 contacts...high barrier
- R : High barrier type



Standard solder cup type



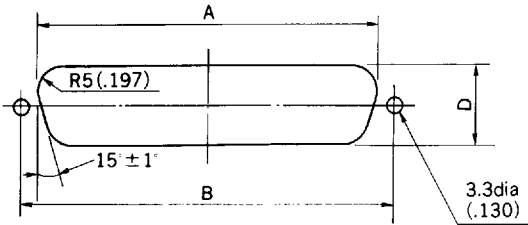
High barrier type

# 57 Series

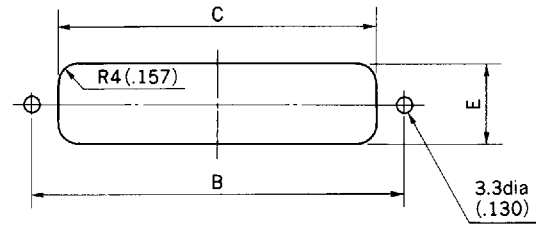


## Panel cut out dimensions

Unit:mm(inch)



Rear mounting



Front mounting

### Plug

NO. OF CONT'S	A	B	C	D	E
14	29.3 (1.154)	36.0 (1.417)	23.9 (.941)	15.5min (.610)	14.7min (.579)
24	40.1 (1.579)	46.8 (1.843)	34.7 (1.366)		
36	53.0 (2.087)	59.7 (2.350)	47.7 (1.878)		
50	68.2 (2.685)	74.9 (2.949)	62.8 (2.472)		
64	83.3 (3.280)	90.0 (3.543)	78.1 (3.075)		

### Receptacle

NO. OF CONT'S	A	B	C	D	E
14	29.3 (1.154)	36.0 (1.417)	25.3 (.996)	15.5min (.610)	16.2min (.638)
24	40.1 (1.579)	46.8 (1.843)	36.1 (1.421)		
36	53.0 (2.087)	59.7 (2.350)	49.0 (1.929)		
50	68.2 (2.685)	74.9 (2.949)	64.1 (2.524)		
64	83.3 (3.280)	90.0 (3.543)	79.5 (3.130)		

## Mated dimensions-Rack and Panel connectors

