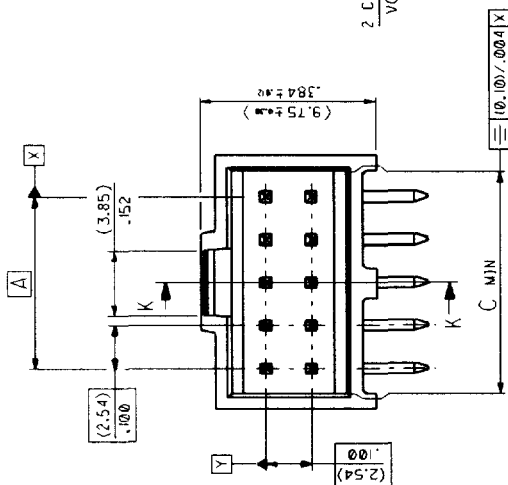
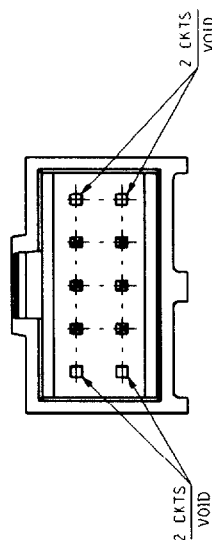
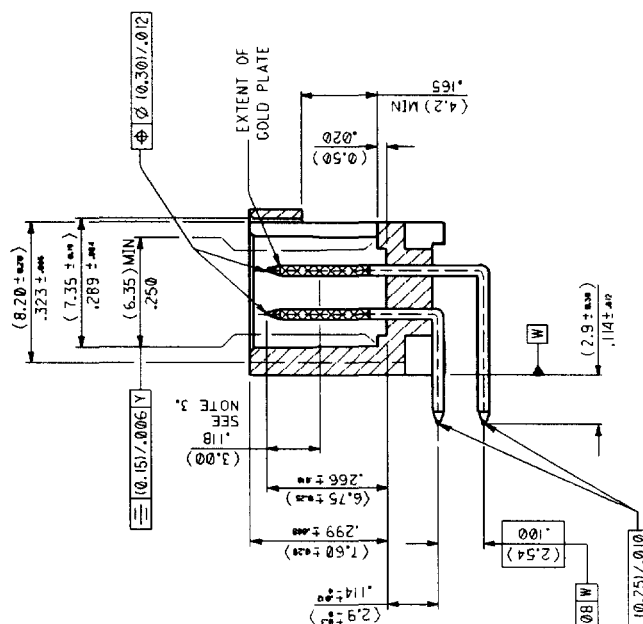


SEE CHART
SDA-9013B

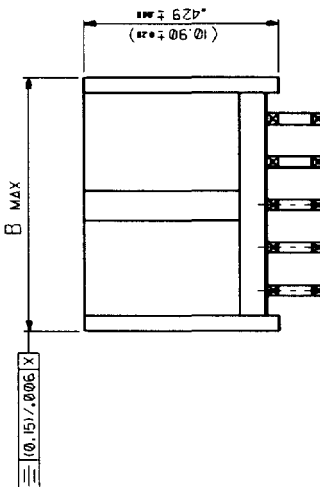
HSG CKT SIZE	A	B	C
6	(5.08)	(10.34)	(17.92)
8	(7.62)	(12.88)	(10.46)
10	(10.16)	(15.42)	(13.00)
12	(12.70)	(17.96)	(15.54)
14	(15.24)	(20.50)	(18.08)
16	(17.78)	(23.04)	(20.62)
18	(20.32)	(25.58)	(23.16)
20	(22.86)	(28.12)	(25.70)
22	(25.40)	(30.66)	(28.24)
24	(27.94)	(33.20)	(30.78)
26	(30.48)	(35.74)	(33.32)
28			
30	(35.56)	(40.82)	(38.40)
32			
34	(40.64)	(45.90)	(43.48)
36			
38	(45.72)	(50.98)	(48.56)
40	(48.26)	(53.52)	(51.10)
42			
44	(53.34)	(58.60)	(56.18)
46			
48			
50	(60.96)	(66.22)	(63.80)
52			
54	(66.04)	(71.30)	(68.88)
56			
58			
60	(73.66)	(78.92)	(76.50)
62			
64	(78.74)	(84.00)	(81.58)
66			
68	(83.82)	(89.08)	(86.66)



VERSION WITH VOIDS



SECTION K K

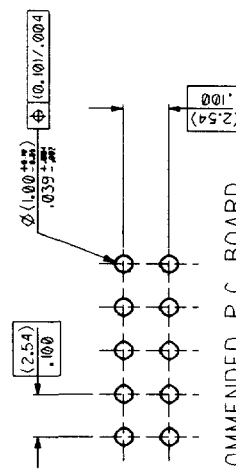


NOTES

- MATERIAL:-
- PIN:- (0.635)/Ø25 S.O. BRASS WIRE.
 - HOUSING:- 15% GLASS FILLED POLYESTER
 - III 94 V-Ø COLOUR BLACK

2.FOR PLATING VERSIONS AND VOID VERSIONS
SEE SHEET 2.

3. MEASUREMENT POINT FOR MINIMUM PLATING THICKNESS.

RECOMMENDED P.C. BOARD
HOLE PATTERN

FOR PREVIOUS DRAWING ISSUES SEE MRL.	K	SEE SHEET 1.	REVISIONS	DIMENSIONS SHOWN IN PARENTS (INCH) UNLESS OTHERWISE SPECIFIED TELEPHONE SYMBOLS IN PARENTS	D DATE 1 1/2 2 1/2 3 1/2 4 1/2 5 1/2 6 1/2 7 1/2 8 1/2 9 1/2 10 1/2 11 1/2 12 1/2 13 1/2 14 1/2 15 1/2 16 1/2 17 1/2 18 1/2 19 1/2 20 1/2 21 1/2 22 1/2 23 1/2 24 1/2 25 1/2 26 1/2 27 1/2 28 1/2 29 1/2 30 1/2 31 1/2 32 1/2 33 1/2 34 1/2 35 1/2 36 1/2 37 1/2 38 1/2 39 1/2 40 1/2 41 1/2 42 1/2 43 1/2 44 1/2 45 1/2 46 1/2 47 1/2 48 1/2 49 1/2 50 1/2 51 1/2 52 1/2 53 1/2 54 1/2 55 1/2 56 1/2 57 1/2 58 1/2 59 1/2 60 1/2 61 1/2 62 1/2 63 1/2 64 1/2 65 1/2 66 1/2 67 1/2 68 1/2 69 1/2 70 1/2 71 1/2 72 1/2 73 1/2 74 1/2 75 1/2 76 1/2 77 1/2 78 1/2 79 1/2 80 1/2 81 1/2 82 1/2 83 1/2 84 1/2 85 1/2 86 1/2 87 1/2 88 1/2 89 1/2 90 1/2 91 1/2 92 1/2 93 1/2 94 1/2 95 1/2 96 1/2 97 1/2 98 1/2 99 1/2 100 1/2	D DATE 1 1/2 2 1/2 3 1/2 4 1/2 5 1/2 6 1/2 7 1/2 8 1/2 9 1/2 10 1/2 11 1/2 12 1/2 13 1/2 14 1/2 15 1/2 16 1/2 17 1/2 18 1/2 19 1/2 20 1/2 21 1/2 22 1/2 23 1/2 24 1/2 25 1/2 26 1/2 27 1/2 28 1/2 29 1/2 30 1/2 31 1/2 32 1/2 33 1/2 34 1/2 35 1/2 36 1/2 37 1/2 38 1/2 39 1/2 40 1/2 41 1/2 42 1/2 43 1/2 44 1/2 45 1/2 46 1/2 47 1/2 48 1/2 49 1/2 50 1/2 51 1/2 52 1/2 53 1/2 54 1/2 55 1/2 56 1/2 57 1/2 58 1/2 59 1/2 60 1/2 61 1/2 62 1/2 63 1/2 64 1/2 65 1/2 66 1/2 67 1/2 68 1/2 69 1/2 70 1/2 71 1/2 72 1/2 73 1/2 74 1/2 75 1/2 76 1/2 77 1/2 78 1/2 79 1/2 80 1/2 81 1/2 82 1/2 83 1/2 84 1/2 85 1/2 86 1/2 87 1/2 88 1/2 89 1/2 90 1/2 91 1/2 92 1/2 93 1/2 94 1/2 95 1/2 96 1/2 97 1/2 98 1/2 99 1/2 100 1/2	DIMENSIONS SHOWN IN PARENTS (INCH) UNLESS OTHERWISE SPECIFIED TELEPHONE SYMBOLS IN PARENTS	D DATE 1 1/2 2 1/2 3 1/2 4 1/2 5 1/2 6 1/2 7 1/2 8 1/2 9 1/2 10 1/2 11 1/2 12 1/2 13 1/2 14 1/2 15 1/2 16 1/2 17 1/2 18 1/2 19 1/2 20 1/2 21 1/2 22 1/2 23 1/2 24 1/2 25 1/2 26 1/2 27 1/2 28 1/2 29 1/2 30 1/2 31 1/2 32 1/2 33 1/2 34 1/2 35 1/2 36 1/2 37 1/2 38 1/2 39 1/2 40 1/2 41 1/2 42 1/2 43 1/2 44 1/2 45 1/2 46 1/2 47 1/2 48 1/2 49 1/2 50 1/2 51 1/2 52 1/2 53 1/2 54 1/2 55 1/2 56 1/2 57 1/2 58 1/2 59 1/2 60 1/2 61 1/2 62 1/2 63 1/2 64 1/2 65 1/2 66 1/2 67 1/2 68 1/2 69 1/2 70 1/2 71 1/2 72 1/2 73 1/2 74 1/2 75 1/2 76 1/2 77 1/2 78 1/2 79 1/2 80 1/2 81 1/2 82 1/2 83 1/2 84 1/2 85 1/2 86 1/2 87 1/2 88 1/2 89 1/2 90 1/2 91 1/2 92 1/2 93 1/2 94 1/2 95 1/2 96 1/2 97 1/2 98 1/2 99 1/2 100 1/2	DIMENSIONS SHOWN IN PARENTS (INCH) UNLESS OTHERWISE SPECIFIED TELEPHONE SYMBOLS IN PARENTS	D DATE 1 1/2 2 1/2 3 1/2 4 1/2 5 1/2 6 1/2 7 1/2 8 1/2 9 1/2 10 1/2 11 1/2 12 1/2 13 1/2 14 1/2 15 1/2 16 1/2 17 1/2 18 1/2 19 1/2 20 1/2 21 1/2 22 1/2 23 1/2 24 1/2 25 1/2 26 1/2 27 1/2 28 1/2 29 1/2 30 1/2 31 1/2 32 1/2 33 1/2 34 1/2 35 1/2 36 1/2 37 1/2 38 1/2 39 1/2 40 1/2 41 1/2 42 1/2 43 1/2 44 1/2 45 1/2 46 1/2 47 1/2 48 1/2 49 1/2 50 1/2 51 1/2 52 1/2 53 1/2 54 1/2 55 1
--	---	--------------	-----------	--	--	--	--	--	--	---

730-1203

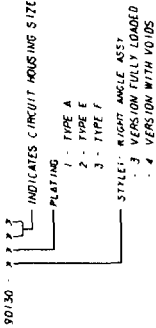
SEE CHART
SDA-90/08

NO OF CAT TYPE	MSG SIZE	PART NUMBER		PART NUMBER		PART NUMBER		PART NUMBER	
		PLATING TYPE A	PLATING TYPE E	PLATING TYPE A	PLATING TYPE E	PLATING TYPE A	PLATING TYPE E	PLATING TYPE A	PLATING TYPE E
6	6	90/30-3106	90/30-3206	90/30-3106	90/30-3206	90/30-3106	90/30-3206	90/30-3106	90/30-3206
8	8	90/30-3108	90/30-3208	90/30-3108	90/30-3208	90/30-3108	90/30-3208	90/30-3108	90/30-3208
10	10	90/30-3110	90/30-3210	90/30-3110	90/30-3210	90/30-3110	90/30-3210	90/30-3110	90/30-3210
12	12	90/30-3112	90/30-3212	90/30-3112	90/30-3212	90/30-3112	90/30-3212	90/30-3112	90/30-3212
14	14	90/30-3114	90/30-3214	90/30-3114	90/30-3214	90/30-3114	90/30-3214	90/30-3114	90/30-3214
16	16	90/30-3116	90/30-3216	90/30-3116	90/30-3216	90/30-3116	90/30-3216	90/30-3116	90/30-3216
18	18	90/30-3118	90/30-3218	90/30-3118	90/30-3218	90/30-3118	90/30-3218	90/30-3118	90/30-3218
20	20	90/30-3120	90/30-3220	90/30-3120	90/30-3220	90/30-3120	90/30-3220	90/30-3120	90/30-3220
22	22	90/30-3122	90/30-3222	90/30-3122	90/30-3222	90/30-3122	90/30-3222	90/30-3122	90/30-3222
24	24	90/30-3124	90/30-3224	90/30-3124	90/30-3224	90/30-3124	90/30-3224	90/30-3124	90/30-3224
26	26	90/30-3126	90/30-3226	90/30-3126	90/30-3226	90/30-3126	90/30-3226	90/30-3126	90/30-3226
28	28	90/30-3128	90/30-3228	90/30-3128	90/30-3228	90/30-3128	90/30-3228	90/30-3128	90/30-3228
30	30	90/30-3130	90/30-3230	90/30-3130	90/30-3230	90/30-3130	90/30-3230	90/30-3130	90/30-3230
32	32	90/30-3132	90/30-3232	90/30-3132	90/30-3232	90/30-3132	90/30-3232	90/30-3132	90/30-3232
34	34	90/30-3134	90/30-3234	90/30-3134	90/30-3234	90/30-3134	90/30-3234	90/30-3134	90/30-3234
36	36	90/30-3136	90/30-3236	90/30-3136	90/30-3236	90/30-3136	90/30-3236	90/30-3136	90/30-3236
38	38	90/30-3138	90/30-3238	90/30-3138	90/30-3238	90/30-3138	90/30-3238	90/30-3138	90/30-3238
40	40	90/30-3140	90/30-3240	90/30-3140	90/30-3240	90/30-3140	90/30-3240	90/30-3140	90/30-3240
42	42	90/30-3142	90/30-3242	90/30-3142	90/30-3242	90/30-3142	90/30-3242	90/30-3142	90/30-3242
44	44	90/30-3144	90/30-3244	90/30-3144	90/30-3244	90/30-3144	90/30-3244	90/30-3144	90/30-3244
46	46	90/30-3146	90/30-3246	90/30-3146	90/30-3246	90/30-3146	90/30-3246	90/30-3146	90/30-3246
48	48	90/30-3148	90/30-3248	90/30-3148	90/30-3248	90/30-3148	90/30-3248	90/30-3148	90/30-3248
50	50	90/30-3150	90/30-3250	90/30-3150	90/30-3250	90/30-3150	90/30-3250	90/30-3150	90/30-3250
52	52	90/30-3152	90/30-3252	90/30-3152	90/30-3252	90/30-3152	90/30-3252	90/30-3152	90/30-3252
54	54	90/30-3154	90/30-3254	90/30-3154	90/30-3254	90/30-3154	90/30-3254	90/30-3154	90/30-3254
56	56	90/30-3156	90/30-3256	90/30-3156	90/30-3256	90/30-3156	90/30-3256	90/30-3156	90/30-3256
58	58	90/30-3158	90/30-3258	90/30-3158	90/30-3258	90/30-3158	90/30-3258	90/30-3158	90/30-3258
60	60	90/30-3160	90/30-3260	90/30-3160	90/30-3260	90/30-3160	90/30-3260	90/30-3160	90/30-3260
62	62	90/30-3162	90/30-3262	90/30-3162	90/30-3262	90/30-3162	90/30-3262	90/30-3162	90/30-3262
64	64	90/30-3164	90/30-3264	90/30-3164	90/30-3264	90/30-3164	90/30-3264	90/30-3164	90/30-3264
66	66	90/30-3166	90/30-3266	90/30-3166	90/30-3266	90/30-3166	90/30-3266	90/30-3166	90/30-3266
68	68	90/30-3168	90/30-3268	90/30-3168	90/30-3268	90/30-3168	90/30-3268	90/30-3168	90/30-3268

VERSION FULLY LOADED

VERSION WITH VOIDS

NOTES:
1. FOR ASSY SEE SHEET 3.
2. FOR PLATING DETAILS SEE SDCS 99000 0003



SEE SHEET 1
FINDOAR 00-00/25

MS 10/09/97
10/09/97
10/09/97
C - GRID III
DUAL ROW RIGHT ANGLE
SHROUDED HEADER
SEE CHART SDA-90/09 4 OF 5

LEVEL CHART

1	17	33	49
2	18	34	50
3	19	35	51
4	20	36	52
5	21	37	53
6	22	38	54
7	23	39	55
8	24	40	56
9	25	41	57
10	26	42	58
11	27	43	59
12	28	44	60
13	29	45	61
14	30	46	62
15	31	47	63
16	32	48	