

VXE4 Surface Mount Crystals

Package Options **E4** = 6 x 3.5 x 1.1 mm tall 4 pads

Frequency Range 9.68MHz to 100MHz

Mode **1** = Fundamental (9.68 to 40 MHz)
 3 = 3rd Overtone (40 to 100 MHz)

Stability Options

- A** = ±100 PPM -20°C to +70°C
- B** = ±50 PPM -20°C to +70°C
- C** = ±100 PPM -40°C to +85°C
- D** = ±50 PPM -40°C to +85°C
- E** = ±25 PPM -20°C to +70°C
- G** = ±10 PPM -20°C to +70°C
- H** = ±5 PPM -10°C to +60°C

Load **0** = Series Resonant

Capacitance

- 1** = 16 pF
- 2** = 20 pF
- 4** = 18 pF
- 5** = 10 pF
- 6** = 30 pF

Calibration Tolerance ±25 PPM at + 25°C

Equivalent Series Resistance <60 Ohms

Shunt Capacitance 7 pF Maximum

Drive Level 10 to 100 uW

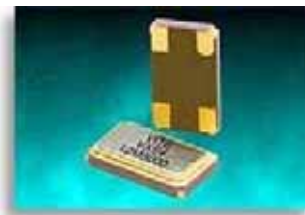
Aging <5 ppm/1st year at +25°C

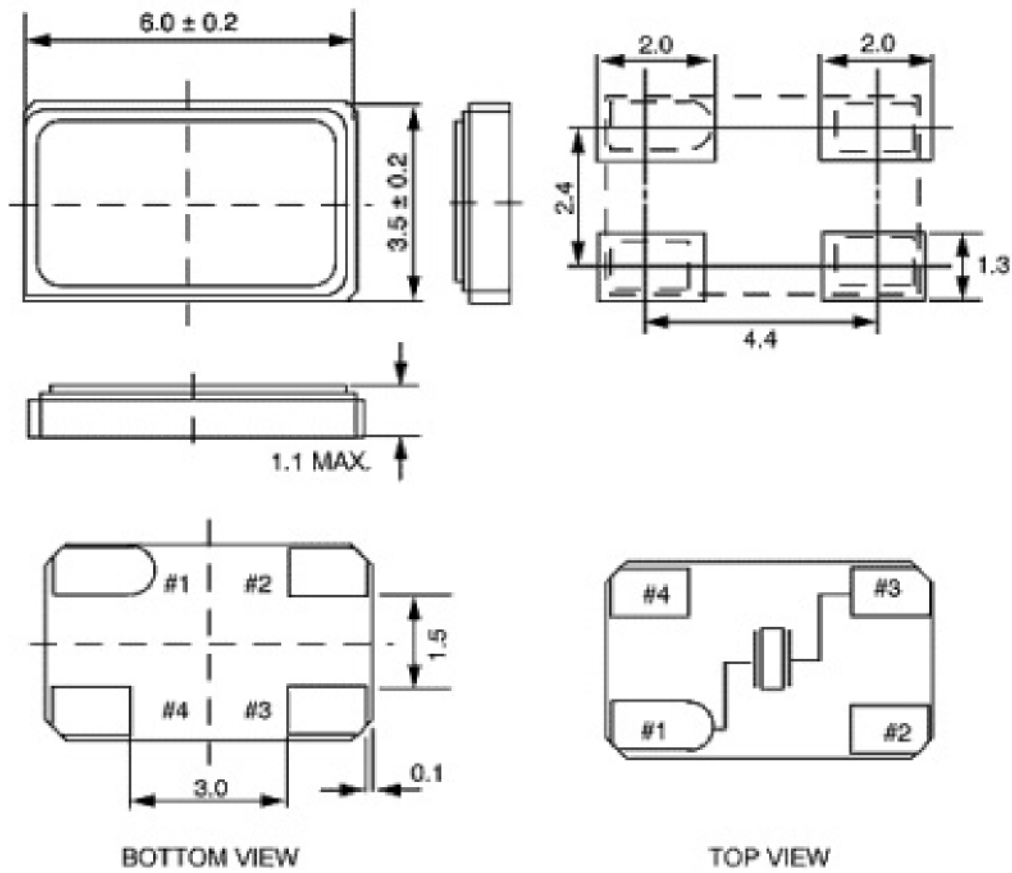
Typical P/N **VXE4-3B2-56M448**

V = VITE
X = Crystal
E4 = 6.0 x 3.5 x 1.1 mm package
3 = 3rd Overtone
B = ±50 PPM
2 = 20 pF load

[Generate your own part number!](#)

We welcome your custom requests and will issue a custom part number for items that are not listed.





#4 = GROUND □ □ #3 = CRYSTAL
 #1 = CRYSTAL ▭ ▭ #2 = GROUND

Dimensions in mm.