

SPECIFICATIONS

Mechanical

Contact Retention Force: 0.5Kg min.

Electrical

Current Rating: 1A

Contact Resistance: 20mΩ max.

Dielectrical Withstanding Voltage: 1000V

Insulation Resistance: 10000MΩ min.

Physical

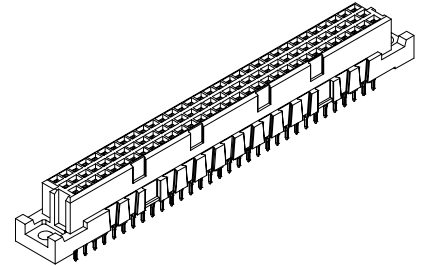
Housing: PBT, UL 94-0, Gray White

Contact: Phosphor Bronze

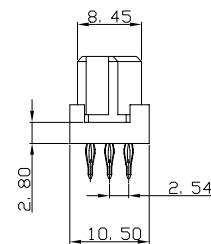
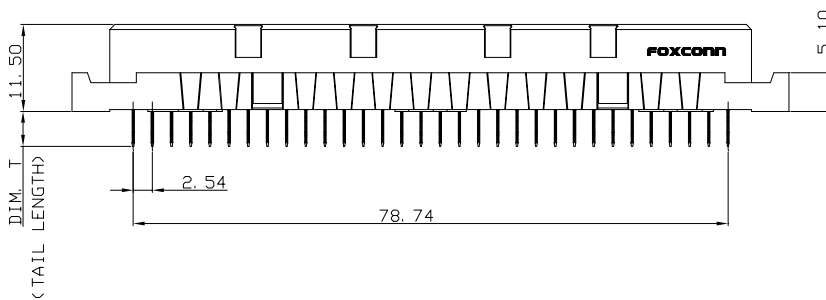
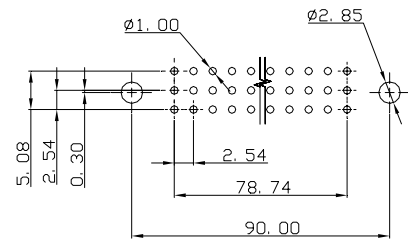
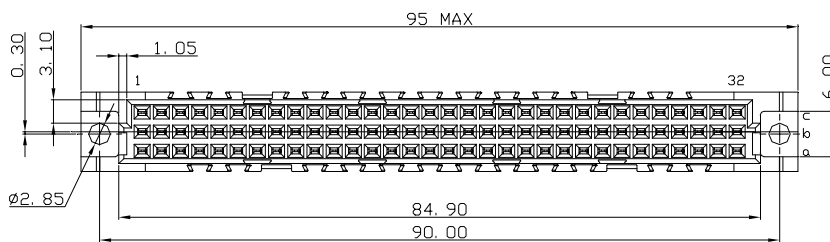
Plating: See "ORDERING INFORMATION"

DIN41612 CONNECTOR

**RZ Series,
Fixed board, style C
Receptacle, Press Fit Type
2.54mm Pitch
3 Rows**



DRAWING



ORDERING INFORMATION

PRODUCT NO.: RZ 2 3 0 9 6 * - P C 9 0 1 - **

POS. NO.:

096=096 pos.

Mating Area Plating:

3=0.76um(30u")Min. gold plating

C=0.76um(30u")Min. FPT plating,

gold flash included

K=0.38um(15u")Min. FPT plating,

gold flash included

Tail Style:

P=Press Fit

Lead Free Code:

N=None

F=Lead Free

Package Type:

A=Tube

4=Tray

Tail length(Dim T):

9=4.6mm