

# MICRO ELECTRONICS

**B2A16LY**

**LED BACKLIGHT  
FOR LCD DISPLAY**

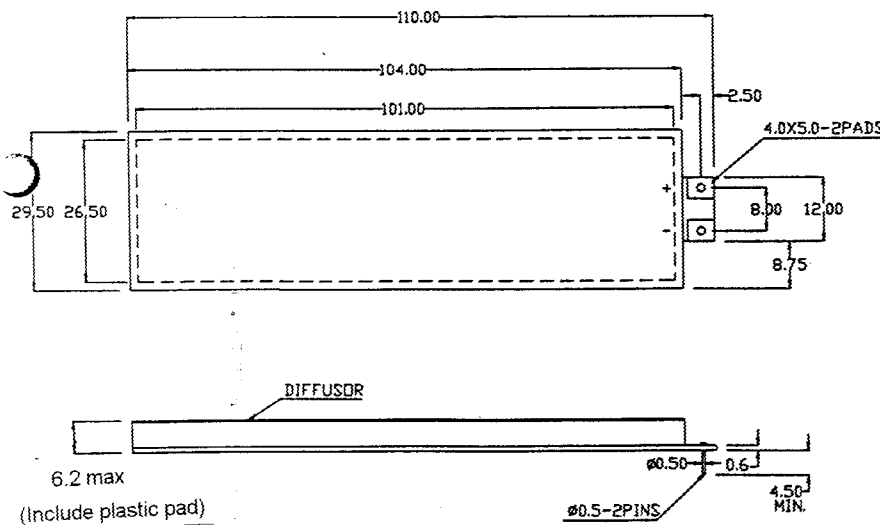
## ABSOLUTE MAXIMUM RATINGS

Forward Current	IF	640mA
Reverse Voltage	VR	10V
Operating Temperature	Topr	-20 to +70°C
Storage Temperature	Tstg	-30 to +80°C

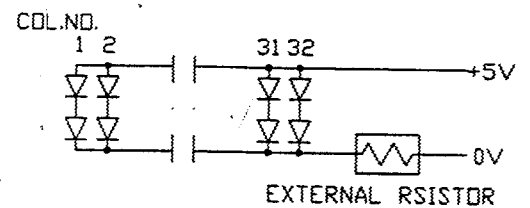
## ELECTRO-OPTICAL CHARACTERISTICS (Ta=25°C)

PARAMETER	SYMBOL	MIN	TYP	MAX	UNIT	CONDITIONS
Forward Voltage	VF	3.6	4.0	5.2	V	IF=320mA
Reverse Current	IR			80	μA	VR=10V
Peak Wavelength	λp		565		nm	IF=320mA
Spectral Line Half Width	Δλ		40		nm	IF=320mA
Brightness	B	60			cd/m <sup>2</sup>	IF=320mA

## MECHANICAL OUTLINE



## CIRCUIT DIAGRAM



**MICRO ELECTRONICS LTD.**

38, Hung To Road, Microtron Building, Kwun Tong, Kowloon, Hong Kong.

Kwun Tong P.O. Box 69477 Hong Kong. Fax No. 2341 0321 Telex: 43510 Micro Hk. Tel: 2343 0181-5