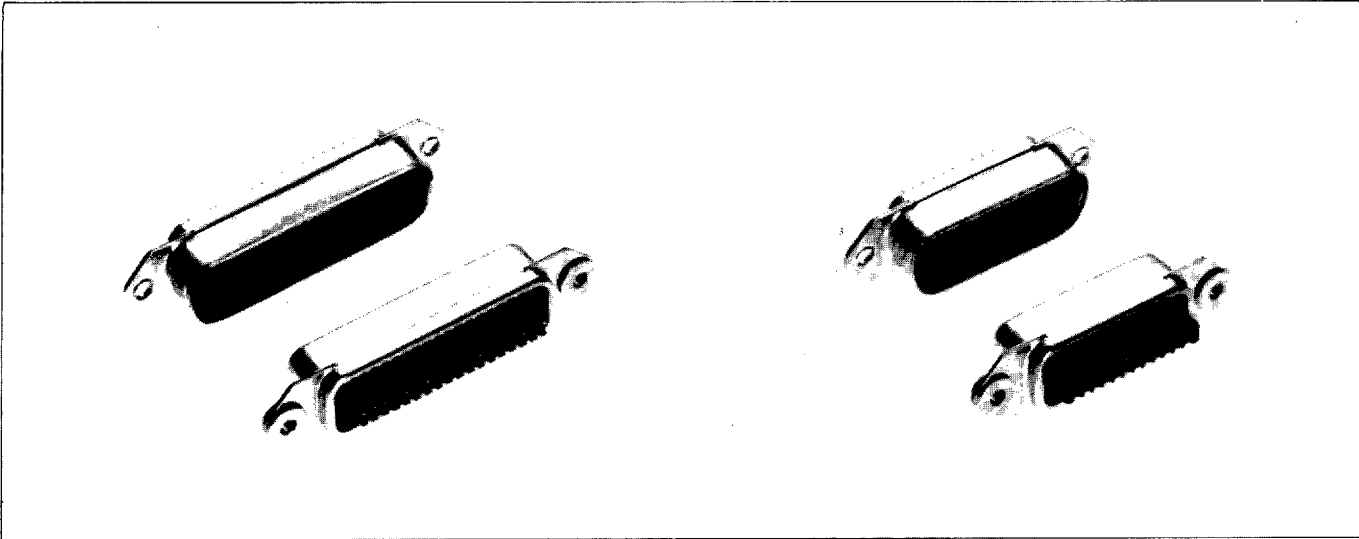


57 Series

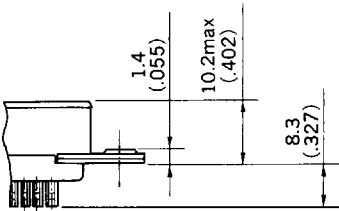
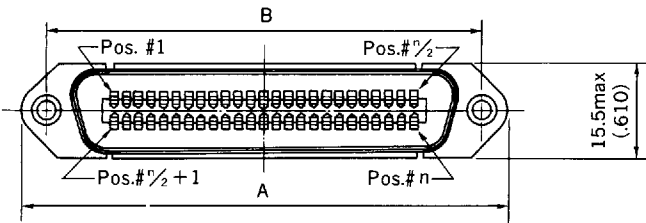


Rack and Panel

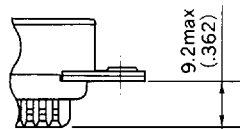
Unit:mm(inch)



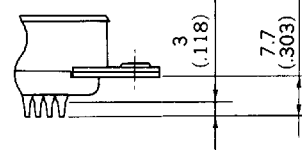
● Plugs



Solder cup type



High-barrier type



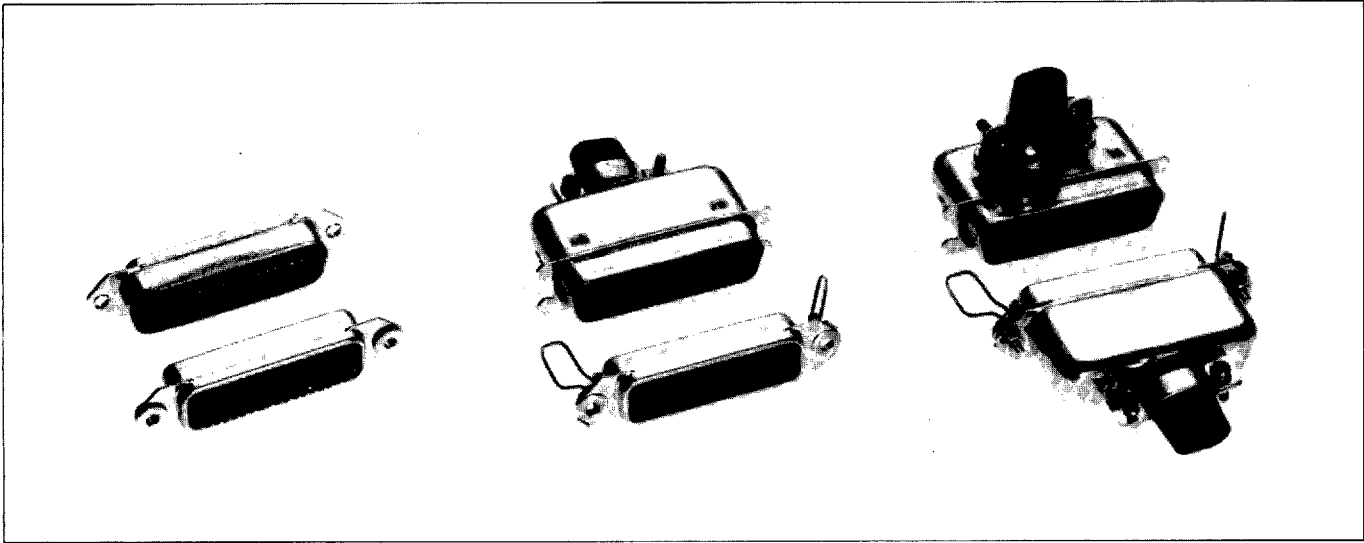
Dip solder type

NO. OF CONT'S	3.05(.120)dia mounting hole			4.6(.181)dia mounting hole Solder cup	A	B
	Solder cup	High-barrier	Dip solder			
14	57-1014×	57-1014×R	57-1014×-4	57-1014×-D38	43.9 (1.728)	36.0 (1.417)
24	57-1024×	57-1024×R	57-1024×-3	57-1024×-D38	54.7 (2.154)	46.8 (1.843)
36	57-1036×	57-1036×R	57-1036×-13	57-1036×-D38	67.7 (2.665)	59.7 (2.350)
50	57-1050×	57-1050×R	57-1050×-27	57-1050×-D38	82.8 (3.260)	74.9 (2.949)
64	—	57-10640	—	—	98.0 (3.858)	90.0 (3.543)

57 Series



Basic version of ribbon connectors Solder type



FEATURES

- Stable connection by self-wiping and self-cleaning mechanism
- Available in various styles
- UL recognized (File No.E72124)
- Intermateable with 57 family connectors

SPECIFICATIONS

Rated voltage500V AC/700V DC
Rated current5A/contact
Dielectric withstanding ...1200V AC (r.m.s.)
voltage 1 minute
Insulation resistance1000M Ω min.
at 500V DC
Wire accommodationSolid : 22 AWG max.
Stranded : 24 AWG max.

MATERIAL/FINISH

ContactCopper alloy/Gold plate
ShellBrass/Nickel plate
InsulatorDiallyl phthalate resin
(UL94V-0)
Spring latchStainless steel

Ordering Information

57-10 36 0 R-xxx

CONNECTOR STYLE

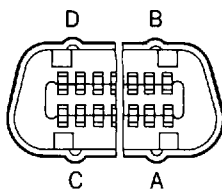
- 10 : Rack and Panel Plug
- 20 : Rack and Panel receptacle
- 30 : Cable plug,
top cable entry
- 40 : Panel receptacle with spring
latches
- 50 : Cable plug,
side cable entry
- 60 : Cable receptacle with
spring latches

NO. OF CONTACTS

- 14, 24, 36, 50
- 64 (high barrier only)

KEY POSITION

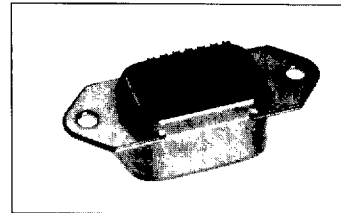
- 0 : No key
- 1 : "A" position
- 2 : "B" position
- 3 : "C" position
- 4 : "D" position



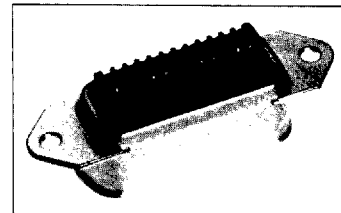
DEVIATION

HOUSING STYLE

- NO designation : Solder cup and dip solder type
64 contacts...high barrier
- R : High barrier type



Standard solder cup type



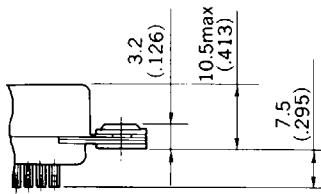
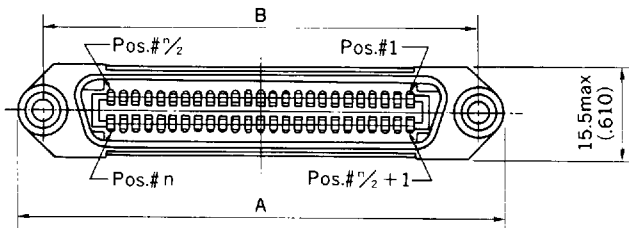
High barrier type

57 Series

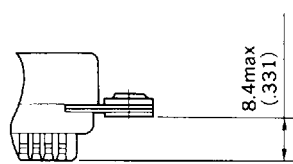


● Receptacles

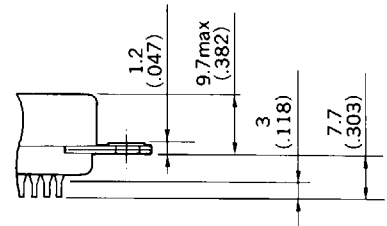
Unit:mm(inch)



Solder cup type



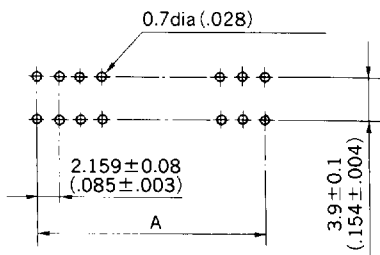
High-barrier type



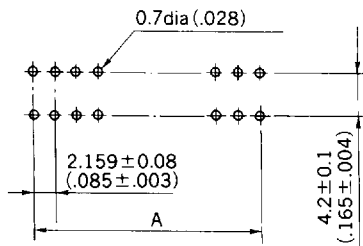
Dip solder type
(less float bushing)

NO. OF CONT'S	With float bushing		less float bushing		A	B
	3.1(.122)dia mounting hole		4.6(.181)dia mounting hole			
	Solder cup	High-barrier	Solder cup	Dip solder		
14	57-2014×	57-2014×R	57-2014×-D25	57-2014×-8	43.9 (1.728)	36.0 (1.417)
24	57-2024×	57-2024×R	57-2024×-D25	57-2024×-8	54.7 (2.154)	46.8 (1.843)
36	57-2034×	57-2036×R	57-2036×-D25	57-2036×-9	67.7 (2.665)	59.7 (2.350)
50	57-2050×	57-2050×R	57-2050×-D25	57-2050×-31	82.8 (3.260)	74.9 (2.949)
64	—	57-20640	—	—	98.0 (3.858)	90.0 (3.543)

PCB mounting dimensions



Plug



Receptacle

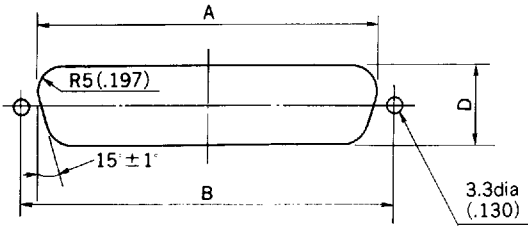
NO. OF CONT'S	A±0.12(±.005)
14	12.96 (.510)
24	23.76 (.935)
36	36.72 (1.446)
50	51.84 (2.041)

57 Series

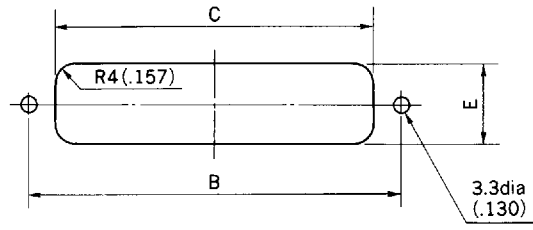


Panel cut out dimensions

Unit:mm(inch)



Rear mounting



Front mounting

Plug

NO. OF CONT'S	A	B	C	D	E
14	29.3 (1.154)	36.0 (1.417)	23.9 (.941)	15.5min (.610)	14.7min (.579)
24	40.1 (1.579)	46.8 (1.843)	34.7 (1.366)		
36	53.0 (2.087)	59.7 (2.350)	47.7 (1.878)		
50	68.2 (2.685)	74.9 (2.949)	62.8 (2.472)		
64	83.3 (3.280)	90.0 (3.543)	78.1 (3.075)		

Receptacle

NO. OF CONT'S	A	B	C	D	E
14	29.3 (1.154)	36.0 (1.417)	25.3 (.996)	15.5min (.610)	16.2min (.638)
24	40.1 (1.579)	46.8 (1.843)	36.1 (1.421)		
36	53.0 (2.087)	59.7 (2.350)	49.0 (1.929)		
50	68.2 (2.685)	74.9 (2.949)	64.1 (2.524)		
64	83.3 (3.280)	90.0 (3.543)	79.5 (3.130)		

Mated dimensions-Rack and Panel connectors

