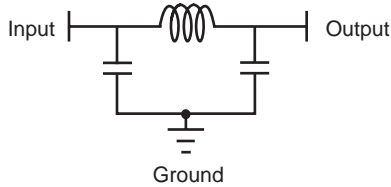


# Explosion Proof Filters

## Ceramic Pi Filter for Explosion Proof Equipment According to EN 50 020

### Circuit Schematic



### Typical Electrical Characteristics

- Working Voltage . . . . . 250 VDC
- Test Voltage . . . . . 1500 VDC 1 Min.  
1060 VAC 1 Min.
- Feed-thru Current . . . . . Max. 10A
- Insulation Resistance . . . . . Min.  $10^4$  MOhm
- Capacitance (total) . . . . . 4nF -0/+100%
- Inductance. . . . . 1000nH -50/+100%
- Soldering Conditions . . . . . Max. 250°C
- Marking . . . . . None
- Operating Temperature. . . . -55°C to +85°C

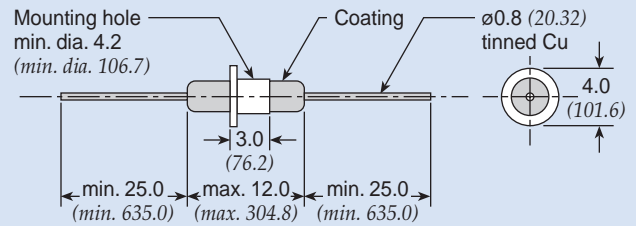
### Part Numbers

- Solder Mount: 1113243-1
- Bushing Mount: 1112522-1
- Bushing Mount with Nut: 5-1112522-1

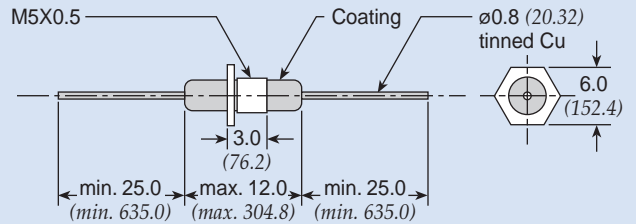


Explosion Proof Filters

### Solder Mount Type



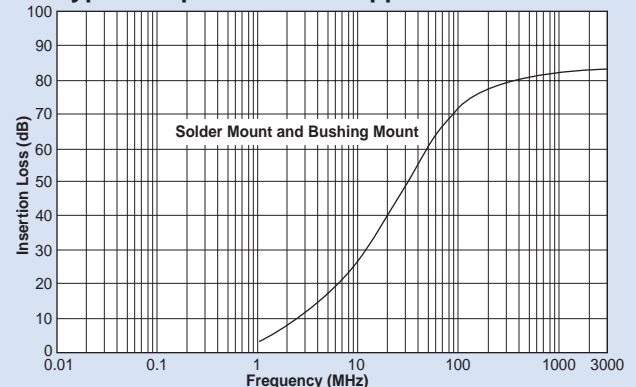
### Bushing Mount Type



Dimensions in inches (mm)

### Pi Insertion Loss

#### Typical Explosion Proof Applications



# Explosion Proof Filters for Industrial Processing Equipment

## Ceramic Pi Filter for Explosion Proof Equipment According to EN 50 020

### Bushing Mount (Figure 1)

Part Number: 1112523-1

Part Number with Nut: 5-1112523-1

### Typical Electrical Characteristics

- Working Voltage . . . . . 350 VDC
- Test Voltage . . . . . 1700 VDC 1 min.  
1060 VAC 1 min.
- Feed-thru  
Current . . . . . Max. 10A
- Insulation  
Resistance . . . . . Min.  $10^4$  MOhm
- Capacitance (total) . . . . . 1600 pF -20/+80%
- Inductance . . . . . 1000nH -50/+100%
- Soldering  
Conditions . . . . . Max. 250°C
- Marking . . . . . None
- Operating Temperature . . . . -55°C to +85°C

### Bushing Mount (Figure 2)

Part Number: 1112529-1

Part Number with Nut: 5-1112529-1

### Typical Electrical Characteristics

- Working Voltage . . . . . 250 VDC
- Test Voltage . . . . . 1500 VDC 1 Min.  
1060 VAC 1 Min.
- Feed-thru  
Current . . . . . Max. 10A
- Insulation  
Resistance . . . . . Min.  $10^4$  MOhm
- Capacitance (total) . . . . . 4nF -0/+100%
- Inductance . . . . . 1000nH -50/+100%
- Soldering  
Conditions . . . . . Max. 250°C
- Marking . . . . . None
- Operating Temperature . . . . -55°C to +125°C

