



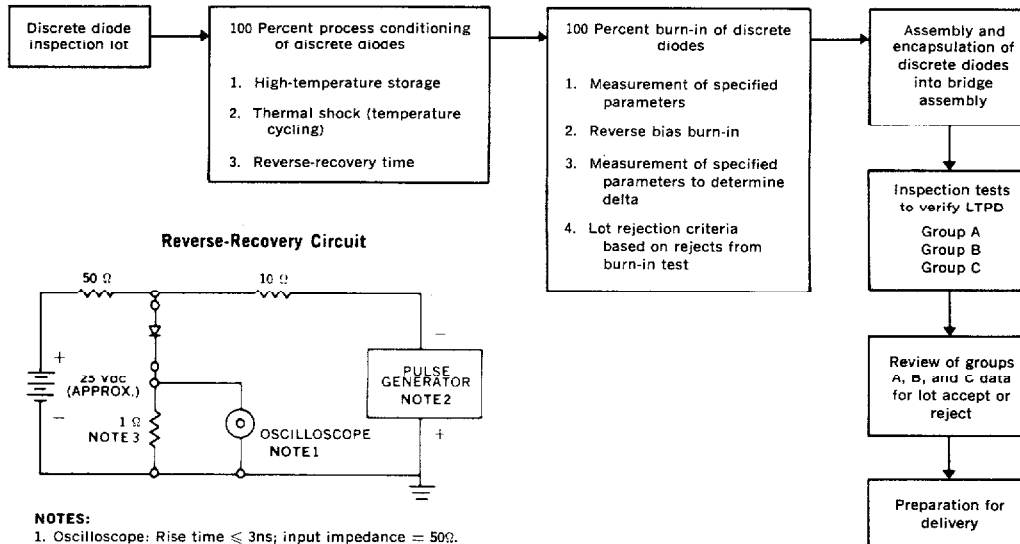
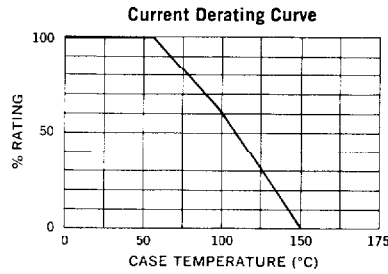
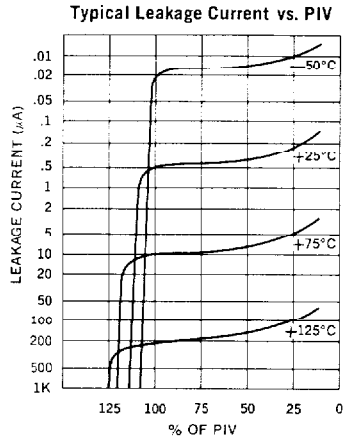
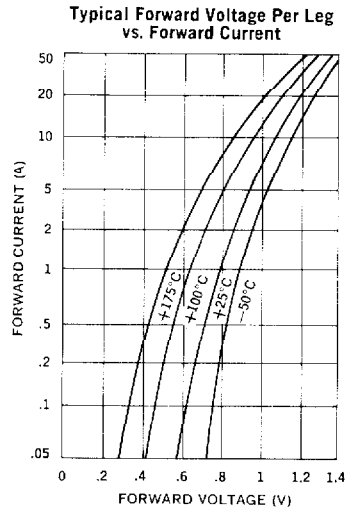
Electrical Specifications (at 25°C unless noted)

Type	PIV Per Leg	Peak Forward Voltage Drop*		Maximum Reverse Recovery Time†	Maximum Leakage Current Per Leg @ PIV	
		Minimum	Maximum		T <sub>C</sub> = 25°C	T <sub>C</sub> = 100°C
	Volts			μS	μA	μA
JAN SPA25 JAN SPB25 JAN SPC25 JAN SPD25	100 200 400 600	0.9V	1.4V	2	2	150
		@ 39A(pk)				

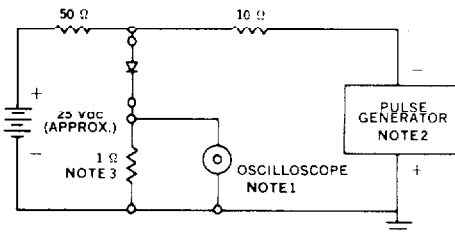
3

\*Peak forward voltage drop is measured at a pulse width of 8.3ms.

†Measured in a reverse recovery circuit switching from 0.5A forward to 1.0A reverse current recovery to 0.5A.



Reverse-Recovery Circuit



- NOTES:**
- Oscilloscope: Rise time ≤ 3ns; input impedance = 50Ω.
  - Pulse Generator: Rise time ≤ 8ns; source impedance 10Ω.
  - Current viewing resistor, non-inductive, coaxial recommended.