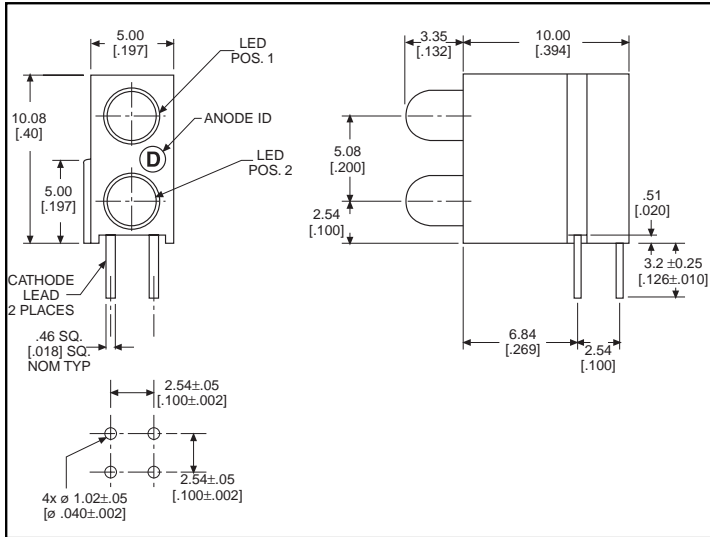




**3mm
LED CBI® Circuit Board Indicator
DIN 41494 Bi-Level**

**Dialight
553-XXXX-400**



Standard Polarity shown in drawing: Cathode left

Benefits

- **DIN 41494 compatible**
- Available in a variety of LEDs
- Standoffs on housing facilitate PC board cleaning
- Bi-level design conserves board space
- Single PC Board insertion 2 LEDs
- Black housing enhances contrast
- High reliability - life measured in years
- Housing meets UL 94V-0
- Vibration and shock resistant
- Housing assures proper LED alignment

Custom Combinations

- Contact factory for information on custom bi-level arrays and color combinations.

LED Data

- For absolute maximum ratings and other electrical/optical data refer to LED data sheets

PART NO.

COLOR*

HIGH EFFICIENCY - LED TYPE 01

- 553-0111-400 Red
- 553-0122-400 Green
- 553-0133-400 Yellow
- 553-0177-400 Orange

LOW CURRENT - LED TYPE 02

- 553-0211-400 Red
- 553-0222-400 Green
- 553-0233-400 Yellow

RESISTOR 5V - LED TYPE 03

- 553-0311-400 Red
- 553-0322-400 Green
- 553-0333-400 Yellow

BI-COLOR - LED TYPE 07

- 553-0711-400 Red/Green
- 553-0744-400 Yellow/Green

NON-DIFFUSED - LED TYPE 22

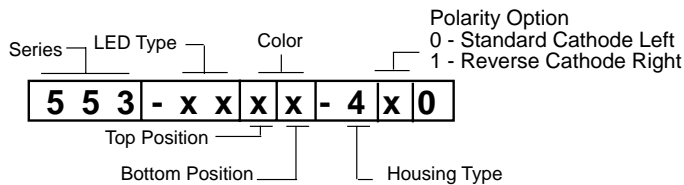
- 553-2211-400 Red
- 553-2222-400 Green
- 553-2233-400 Yellow

* Top-Bottom LED

REVERSE POLARITY OPTION AVAILABLE
See Part Number Ordering Code below.



PART NUMBER ORDERING CODE



Color = 0) Blank 1) Red or Red/Green Bi-Color 2) Green 3) Yellow 4) Yellow/Green Bi-Color 7) Orange



CLICK HERE

To Construct Custom Color Combinations of This Part

553-XXXX-400

(DIN 41494 compatible)

Typical Operating Characteristics ($T_A=25^\circ\text{C}$)

See LED data sheet for additional information

HIGH EFFICIENCY

Part Number	Color	Peak Wavelength nm	I_V mcd	V_F Volts	Test Current (mA)	Viewing Angle $2\Theta_{1/2}$	LED Data sheet	Page #
553-0111-400	Red	635	10	2*	10	60°	521-9216	4-53
553-0122-400	Green	565	12.6	2.1*	10	60°	521-9210	4-53
553-0133-400	Yellow	583	10	2.2	10	60°	521-9211	4-53
553-0177-400	Orange	600	7	2.2*	10	60°	521-9498	4-53

* $I_F=20\text{mA}$

LOW CURRENT

Part Number	Color	Peak Wavelength nm	I_V mcd	V_F Volts	Test Current (mA)	Viewing Angle $2\Theta_{1/2}$	LED Data sheet	Page #
553-0211-400	Red	635	1.8	1.8	2	50°	521-9324	4-55
553-0222-400	Green	565	1.6	1.8	2	50°	521-9326	4-55
553-0233-400	Yellow	583	1.6	1.9	2	50°	521-9325	4-55

INTEGRAL RESISTOR, 5V

Part Number	Color	Peak Wavelength nm	I_V mcd	Test Voltage	Forward Current (mA)	Viewing Angle $2\Theta_{1/2}$	LED Data sheet	Page #
553-0311-400	Red	635	4	5	10	60°	521-9215	4-54
553-0322-400	Green	565	8	5	12	60°	521-9323	4-54
553-0333-400	Yellow	583	8	5	10	60°	521-9322	4-54

BI-COLOR

Bicolor data shown as red/green or yellow/green

Part Number	Color	Peak Wavelength nm	I_V mcd	V_F Volts	Test Current (mA)	Viewing Angle $2\Theta_{1/2}$	LED Data sheet	Page #
553-0711-400	Red/Green	635/565	5	2	10	50°	521-9459	4-58
553-0744-400	Yellow/Green	585/565	4.3/6.3	2.1*/2.1*	10	80°	521-9478	4-57

* $I_F = 20\text{mA}$

NON-DIFFUSED

Part Number	Color	Peak Wavelength nm	I_V mcd	V_F Volts	Test Current (mA)	Viewing Angle $2\Theta_{1/2}$	LED Data sheet	Page #
553-2211-400	Red	635	12	2.2	10	45°	521-9432	4-56
553-2222-400	Green	565	12	2.3	10	45°	521-9430	4-56
553-2233-200	Yellow	583	12	2.2	10	45°	521-9431	4-56

CBI ARRAYS .200 PITCH

Dialight offers its Multiarray to reduce insertions and to assure indicator alignment. Multiarrays mount indicators on .200 centers. These assemblies are available in arrays of 2 to 6. See pages 4-43 and 4-44 for information. Call factory for information on .185 pitched arrays.

