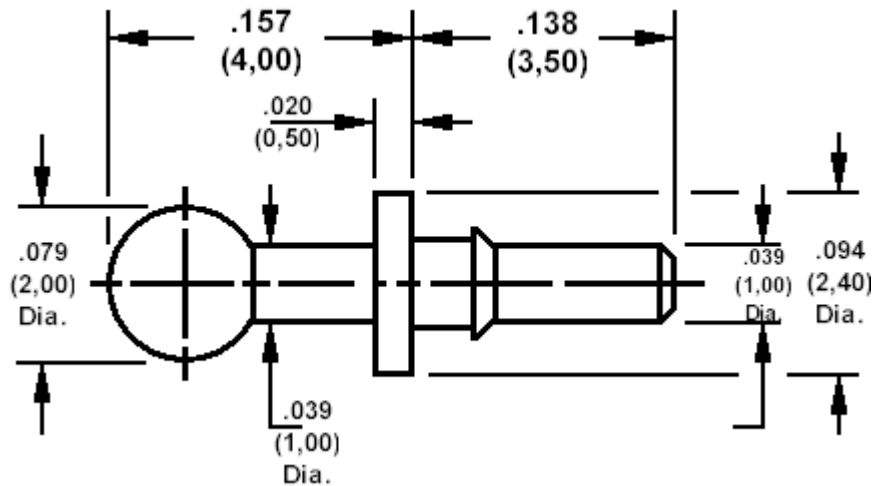


460-8450 Connectaball, barb type press mount

Recommended mounting hole $.051 (1,30) \pm .002 (0,05)$



How to order code

460-8450-01-YY-00

Basic Part No YY = plating finish

MATERIALS					
Component	Material	Finish			
		-01	-03	-93	-04
Terminal	Brass	Silver	Gold over Nickel		Tin
			50µ" (1,25µM) Au	10µ" (0,25µM) Au	

TOOLING	
Anvil	435-8053-01-00-00
Punch	435-8054-01-00-00

Minimum board thickness $.055 (1,40)$