

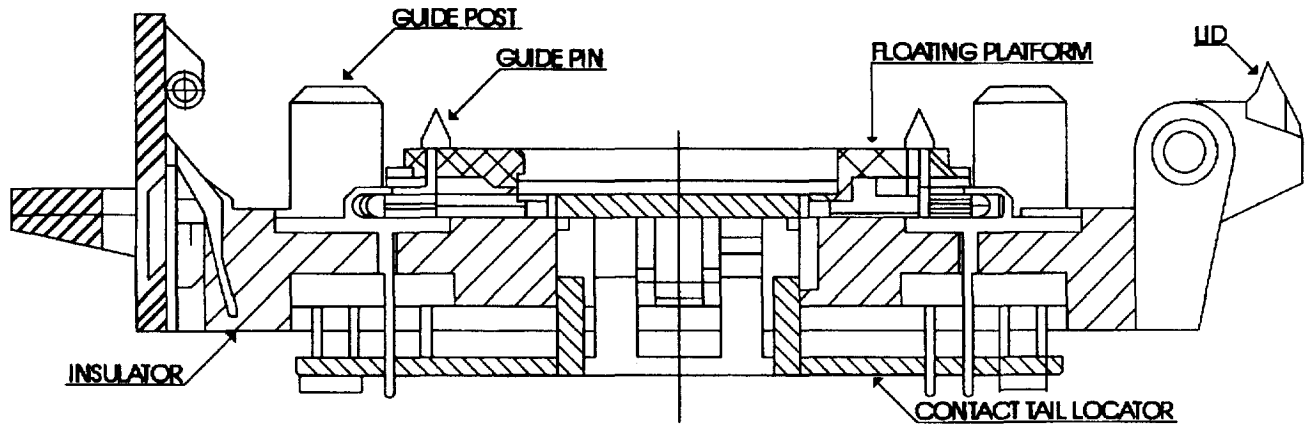
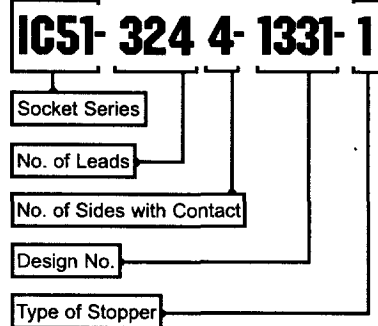
# IC51 Series

### Characteristics

Insulation Resistance:	1,000M $\Omega$ minimum at 500 VDC
Withstanding Voltage:	500 VAC for 1 minute
Contact Resistance:	30m $\Omega$ max. at 10mA/20mV (Initial)
Operating Temperature:	-40°C ~ +170°C

### Material

Insulator:	PEI (Glass Filled)
Contact:	Beryllium Copper
Plating:	Gold over Nickel



# IC51 Series

## TAB Sockets

TAB Sockets			
Part Number	Tape Size	Pitch	Remarks
IC51-1964-1190-1	35mm	0.5mm	
IC51-2444-1191-1	35mm	0.4mm	
IC51-1327-1	35mm	0.381mm	
IC51-3244-1333-1	35mm	0.3mm	
IC51-3244-1333-2	35mm	0.3mm	Matching Carriers are TAB-35032 & TAB-35037
IC51-3884-1429-1	35mm	0.25mm	
IC51-3244-1	48mm	0.4mm	
IC51-4364-1334-1	48mm	0.3mm	
IC51-3244-1331-2	48mm	0.4mm	Matching Carrier is TAB-48041
IC51-5324-1551	48mm	0.25mm	
IC51-5324-1551-2	48mm	0.25mm	Matching Carrier is TAB-48041
IC51-4364-1467-1	70mm	0.5mm	
IC51-5484-1468-1	70mm	0.4mm	

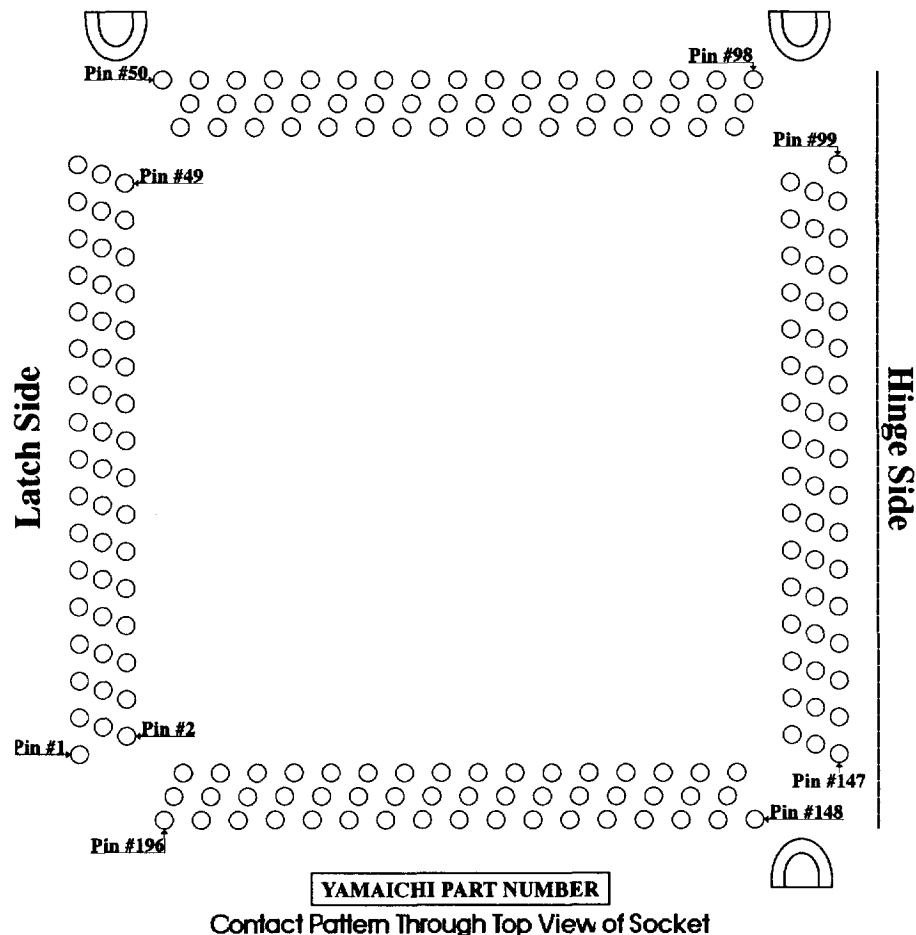
## Carriers

Carriers					
Part Number	Tape Size	Window Size	Super	Wide	Carrier Style
TAB-35006	35mm	24mm	√		Hinge Type
TAB-35013	35mm	25.4mm	√		1 Pc. Type
TAB-35015	35mm	24mm	√		Sandwich Type
TAB-35028	35mm	24.5mm	√		Hinge Type
TAB-35031	35mm	25.4mm	√		Hinge Type
TAB-35032	35mm	40mm	√		Hinge Type
TAB-35037	35mm	40mm	√		1 Pc. Type
TAB-48017	48mm	32.8mm	√		Sandwich Type
TAB-48018	48mm	32.8mm		√	Sandwich Type
TAB-48029	48mm	33mm	√		Hinge Type
TAB-48033	48mm	33mm		√	Hinge Type
TAB-48041	48mm	40mm		√	1 Pc. type
TAB-70009	70mm	52mm		√	1 Pc. type
TAB-70019	70mm	52mm	√		2 Pc. type
TAB-70022	70mm	52mm		√	Sandwich type
TAB-70030	70mm	52mm	√		Hinge type
TAB-70034	70mm	52mm		√	Hinge type

# DEPOPULATION LAYOUT

## IC51 Series

196 Pins, 35mm, 0.5 Pitch Socket



**Convention:**

- Shade Circles To Indicate Required Contact Positions.
- Rule Line to Confirm Required Socket Outline.  
Socket Outline Should Always Appear in the Top Left Corner.

Number of Leads
_____

This Depopulation Layout Corresponds to 3 Sockets.

1. IC51-1964-1990-1
2. IC51-1964-1990-2
3. IC51-1964-1990-3

**35mm TAB Sockets**  
Come in the Following:

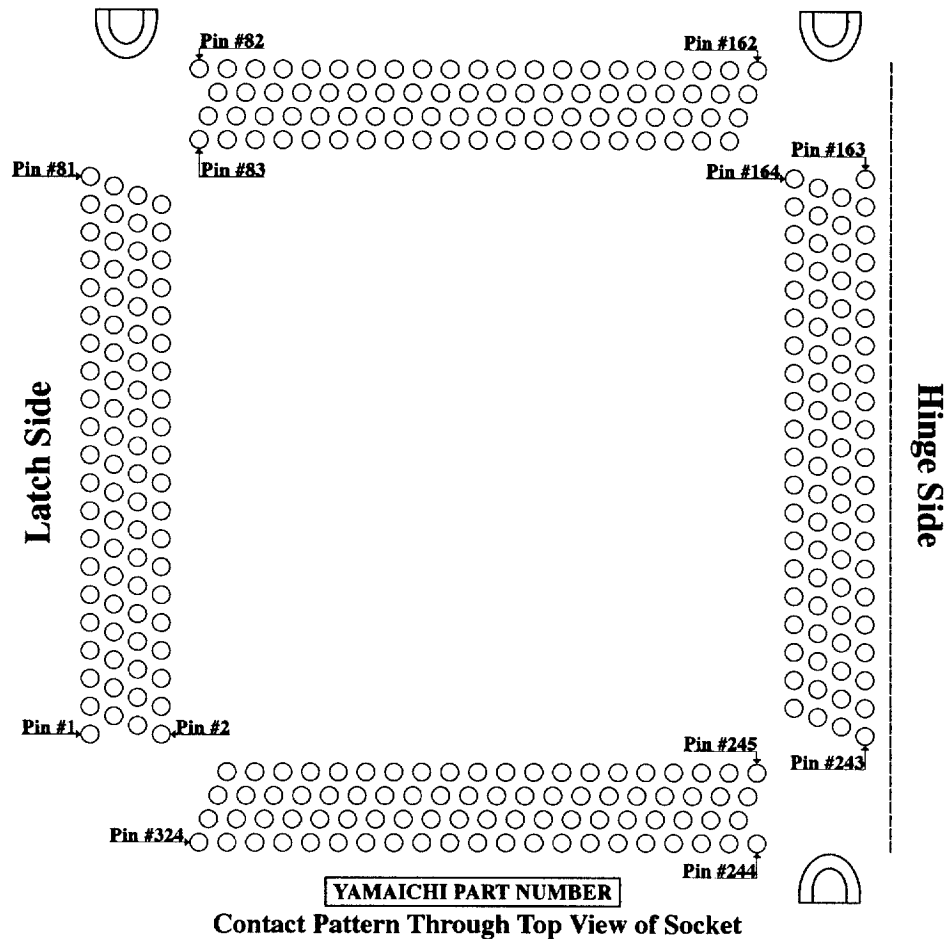
188 Leads	0.381 Pitch
196 Leads	0.5 Pitch
244 Leads	0.4 Pitch
324 Leads	0.3 Pitch
388 Leads	0.25 Pitch

*All layouts are Different. Please Contact Yamaichi for Correct Layout.*

# DEPOPULATION LAYOUT

## IC51 Series

324 Pins, 48mm, 0.4 Pitch Socket



**48mm TAB Sockets Come in the Following:**

324 Leads	0.4 Pitch
436 Leads	0.3 Pitch
532 Leads	0.25 Pitch

All layouts are Different. Please Contact Yamaichi for Correct Layout.

**Convention:**

- Shade Circles To Indicate Required Contact Positions.
  - Rule Line to Confirm Required Socket Outline.
- Socket Outline Should Always Appear in the Top Left Corner.

Number of Leads

---

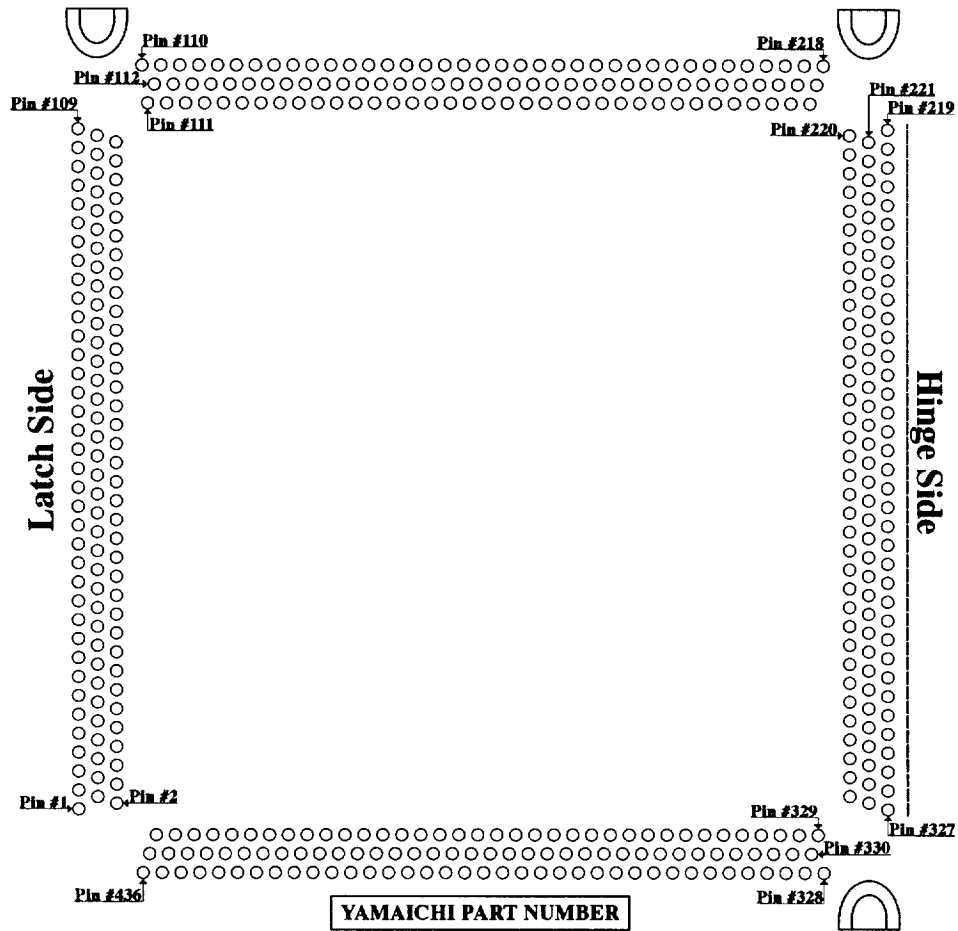
This Depopulation Layout Corresponds to 2 Sockets.

1. IC51-3244-1331-1
2. IC51-3244-1331-2

# DEPOPULATION LAYOUT

# IC51 Series

436 Pins, 70mm, 0.5 Pitch Socket



Contact Pattern Through Top View of Socket

**Convention:**

- Shade Circles To Indicate Required Contact Positions.
- Rule Line to Confirm Required Socket Outline.  
Socket Outline Should Always Appear in the Top Left Corner.

Number of Leads

---

This Depopulation Layout Corresponds to 1 Socket.

1. IC51-4364-1467-1

**70mm TAB Sockets Come in the Following:**

436 Leads      0.5 Pitch  
584 Leads      0.4 Pitch

All layouts are Different. Please Contact Yamaichi for Correct Layout.