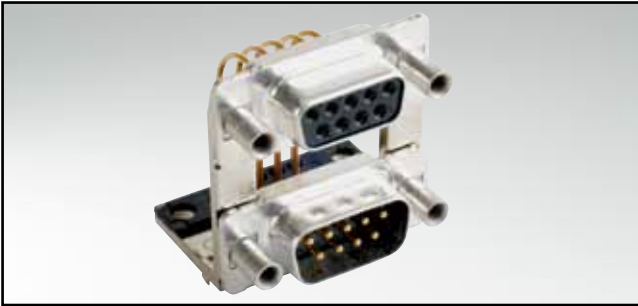


D-SUB STANDARD – DUAL PORT

Solder pin – Angled – Precision machined contacts – .625" / 15.88 mm Connector spacing



RoHS compliant – CSA listed, File No.: LR 115000-1 – UL listed, File No.: E202784

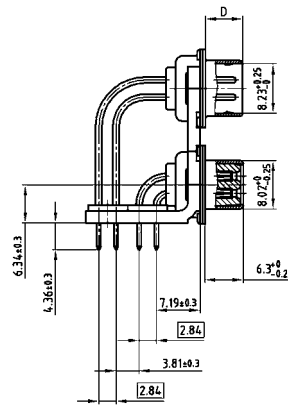
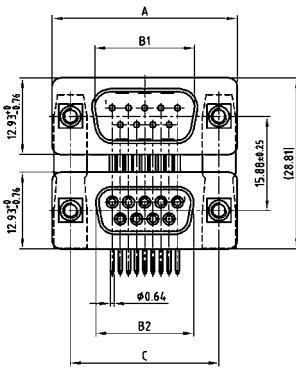
DESCRIPTION

- Variations: pin – pin; socket – socket; pin – socket
- Mounting styles:
 - with mounting bracket and 4-40 UNC or M3 threaded insert
 - with mounting bracket and 4-40 UNC or M3 front spacer
 - with mounting bracket, PCB clip and 4-40 UNC or M3 threaded insert
 - with mounting bracket, PCB clip and 4-40 UNC or M3 front spacer
- Quality class 3 (also available in quality class 1)
- Shell: Steel tin plated (brass tin plated or stainless steel available on request)

PRODUCT DRAWING

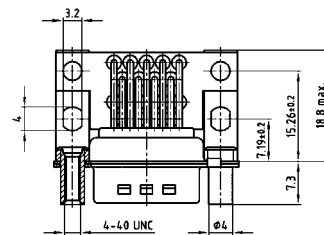
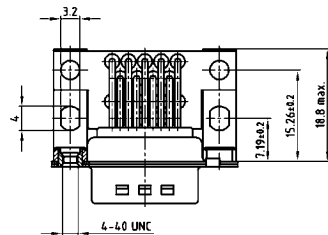
| No. of pos. | A -0.76 | B1 +0.25 | B2 -0.25 | C | D -0.30 |
|-------------|---------|----------|----------|----------------------|---------|
| 2X 09 | 31.19 | 16.79 | 16.46 | 25.00 +0.12 | 6.12 |
| 2X 15 | 39.52 | 25.12 | 24.79 | 33.30 +0.15 +0.10 | 6.12 |
| 2X 25 | 53.42 | 38.84 | 38.50 | 47.04 +0.13 | 5.99 |
| 2X 37 | 69.70 | 55.30 | 54.96 | 63.50 +0.13 | 5.99 |

Graphically representation of only one variant!



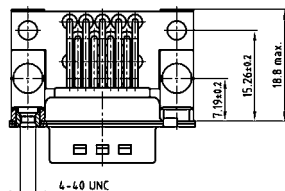
Mounting style: Threaded insert

Mounting style: Front spacer



Mounting style: PCB clip, threaded insert

Mounting style: PCB clip, front spacer

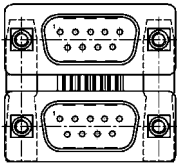


D-SUB STANDARD – DUAL PORT VARIATIONS

Solder pin – Angled – Precision machined contacts – .625" / 15.88 mm Connector spacing

ORDER DATA

PCB layout: Kat1U5A

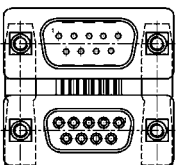


Variation:
plug upper –
plug bottom

| No. of pos. | Mounting style 4-40 UNC | Part Number |
|-------------|----------------------------|---------------|
| 09 / 09 | Threaded insert | 163 A 15199 X |
| 15 / 15 | Threaded insert | 163 A 15209 X |
| 25 / 25 | Threaded insert | 163 A 15219 X |
| 37 / 37 | Threaded insert | 163 A 15229 X |
| 09 / 09 | Front spacer | 163 A 15359 X |
| 15 / 15 | Front spacer | 163 A 15369 X |
| 25 / 25 | Front spacer | 163 A 15379 X |
| 37 / 37 | Front spacer | 163 A 15389 X |
| 09 / 09 | PCB clip / Threaded insert | 163 A 19969 X |
| 15 / 15 | PCB clip / Threaded insert | 163 A 19979 X |
| 25 / 25 | PCB clip / Threaded insert | 163 A 19989 X |
| 37 / 37 | PCB clip / Threaded insert | 163 A 19999 X |
| 09 / 09 | PCB clip / Front spacer | 163 A 19329 X |
| 15 / 15 | PCB clip / Front spacer | 163 A 19339 X |
| 25 / 25 | PCB clip / Front spacer | 163 A 19349 X |
| 37 / 37 | PCB clip / Front spacer | 163 A 19359 X |

| No. of pos. | Mounting style M3 | Part Number |
|-------------|----------------------------|---------------|
| 09 / 09 | Threaded insert | 163 A 15279 X |
| 15 / 15 | Threaded insert | 163 A 15289 X |
| 25 / 25 | Threaded insert | 163 A 15299 X |
| 37 / 37 | Threaded insert | 163 A 15309 X |
| 09 / 09 | Front spacer | 163 A 15439 X |
| 15 / 15 | Front spacer | 163 A 15449 X |
| 25 / 25 | Front spacer | 163 A 15459 X |
| 37 / 37 | Front spacer | 163 A 15469 X |
| 09 / 09 | PCB clip / Threaded insert | 163 A 20049 X |
| 15 / 15 | PCB clip / Threaded insert | 163 A 20059 X |
| 25 / 25 | PCB clip / Threaded insert | 163 A 20069 X |
| 37 / 37 | PCB clip / Threaded insert | 163 A 20079 X |
| 09 / 09 | PCB clip / Front spacer | 163 A 19409 X |
| 15 / 15 | PCB clip / Front spacer | 163 A 19419 X |
| 25 / 25 | PCB clip / Front spacer | 163 A 19429 X |
| 37 / 37 | PCB clip / Front spacer | 163 A 19439 X |

PCB layout: Kat1U6A

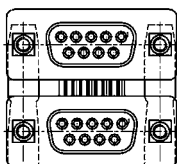


Variation:
plug upper –
socket bottom

| No. of pos. | Mounting style 4-40 UNC | Part Number |
|-------------|----------------------------|---------------|
| 09 / 09 | Threaded insert | 163 A 15239 X |
| 15 / 15 | Threaded insert | 163 A 15249 X |
| 25 / 25 | Threaded insert | 163 A 15259 X |
| 37 / 37 | Threaded insert | 163 A 15269 X |
| 09 / 09 | Front spacer | 163 A 15399 X |
| 15 / 15 | Front spacer | 163 A 15409 X |
| 25 / 25 | Front spacer | 163 A 15419 X |
| 37 / 37 | Front spacer | 163 A 15429 X |
| 09 / 09 | PCB clip / Threaded insert | 163 A 20009 X |
| 15 / 15 | PCB clip / Threaded insert | 163 A 20019 X |
| 25 / 25 | PCB clip / Threaded insert | 163 A 20029 X |
| 37 / 37 | PCB clip / Threaded insert | 163 A 20039 X |
| 09 / 09 | PCB clip / Front spacer | 163 A 19369 X |
| 15 / 15 | PCB clip / Front spacer | 163 A 19379 X |
| 25 / 25 | PCB clip / Front spacer | 163 A 19389 X |
| 37 / 37 | PCB clip / Front spacer | 163 A 19399 X |

| No. of pos. | Mounting style M3 | Part Number |
|-------------|----------------------------|---------------|
| 09 / 09 | Threaded insert | 163 A 15319 X |
| 15 / 15 | Threaded insert | 163 A 15329 X |
| 25 / 25 | Threaded insert | 163 A 15339 X |
| 37 / 37 | Threaded insert | 163 A 15349 X |
| 09 / 09 | Front spacer | 163 A 15479 X |
| 15 / 15 | Front spacer | 163 A 15489 X |
| 25 / 25 | Front spacer | 163 A 15499 X |
| 37 / 37 | Front spacer | 163 A 15509 X |
| 09 / 09 | PCB clip / Threaded insert | 163 A 20089 X |
| 15 / 15 | PCB clip / Threaded insert | 163 A 20099 X |
| 25 / 25 | PCB clip / Threaded insert | 163 A 20109 X |
| 37 / 37 | PCB clip / Threaded insert | 163 A 20119 X |
| 09 / 09 | PCB clip / Front spacer | 163 A 19449 X |
| 15 / 15 | PCB clip / Front spacer | 163 A 19459 X |
| 25 / 25 | PCB clip / Front spacer | 163 A 19469 X |
| 37 / 37 | PCB clip / Front spacer | 163 A 19479 X |

PCB layout: Kat1U6A

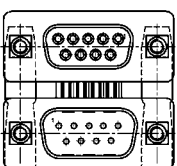


Variation:
socket upper –
socket bottom

| No. of pos. | Mounting style 4-40 UNC | Part Number |
|-------------|----------------------------|---------------|
| 09 / 09 | Threaded insert | 164 A 15609 X |
| 15 / 15 | Threaded insert | 164 A 15619 X |
| 25 / 25 | Threaded insert | 164 A 15629 X |
| 37 / 37 | Threaded insert | 164 A 15639 X |
| 09 / 09 | Front spacer | 164 A 15769 X |
| 15 / 15 | Front spacer | 164 A 15779 X |
| 25 / 25 | Front spacer | 164 A 15789 X |
| 37 / 37 | Front spacer | 164 A 15799 X |
| 09 / 09 | PCB clip / Threaded insert | 164 A 20409 X |
| 15 / 15 | PCB clip / Threaded insert | 164 A 20419 X |
| 25 / 25 | PCB clip / Threaded insert | 164 A 20429 X |
| 37 / 37 | PCB clip / Threaded insert | 164 A 20439 X |
| 09 / 09 | PCB clip / Front spacer | 164 A 19759 X |
| 15 / 15 | PCB clip / Front spacer | 164 A 19769 X |
| 25 / 25 | PCB clip / Front spacer | 164 A 19779 X |
| 37 / 37 | PCB clip / Front spacer | 164 A 19789 X |

| No. of pos. | Mounting style M3 | Part Number |
|-------------|----------------------------|---------------|
| 09 / 09 | Threaded insert | 164 A 15689 X |
| 15 / 15 | Threaded insert | 164 A 15699 X |
| 25 / 25 | Threaded insert | 164 A 15709 X |
| 37 / 37 | Threaded insert | 164 A 15719 X |
| 09 / 09 | Front spacer | 164 A 15849 X |
| 15 / 15 | Front spacer | 164 A 15859 X |
| 25 / 25 | Front spacer | 164 A 15869 X |
| 37 / 37 | Front spacer | 164 A 15879 X |
| 09 / 09 | PCB clip / Threaded insert | 164 A 20489 X |
| 15 / 15 | PCB clip / Threaded insert | 164 A 20499 X |
| 25 / 25 | PCB clip / Threaded insert | 164 A 20509 X |
| 37 / 37 | PCB clip / Threaded insert | 164 A 20519 X |
| 09 / 09 | PCB clip / Front spacer | 164 A 19839 X |
| 15 / 15 | PCB clip / Front spacer | 164 A 19849 X |
| 25 / 25 | PCB clip / Front spacer | 164 A 19859 X |
| 37 / 37 | PCB clip / Front spacer | 164 A 19869 X |

PCB layout: Kat1U6A



Variation:
socket upper –
plug bottom

| No. of pos. | Mounting style 4-40 UNC | Part Number |
|-------------|----------------------------|---------------|
| 09 / 09 | Threaded insert | 164 A 15649 X |
| 15 / 15 | Threaded insert | 164 A 15659 X |
| 25 / 25 | Threaded insert | 164 A 15669 X |
| 37 / 37 | Threaded insert | 164 A 15679 X |
| 09 / 09 | Front spacer | 164 A 15809 X |
| 15 / 15 | Front spacer | 164 A 15819 X |
| 25 / 25 | Front spacer | 164 A 15829 X |
| 37 / 37 | Front spacer | 164 A 15839 X |
| 09 / 09 | PCB clip / Threaded insert | 164 A 20449 X |
| 15 / 15 | PCB clip / Threaded insert | 164 A 20459 X |
| 25 / 25 | PCB clip / Threaded insert | 164 A 20469 X |
| 37 / 37 | PCB clip / Threaded insert | 164 A 20479 X |
| 09 / 09 | PCB clip / Front spacer | 164 A 19799 X |
| 15 / 15 | PCB clip / Front spacer | 164 A 19809 X |
| 25 / 25 | PCB clip / Front spacer | 164 A 19819 X |
| 37 / 37 | PCB clip / Front spacer | 164 A 19829 X |

| No. of pos. | Mounting style M3 | Part Number |
|-------------|----------------------------|---------------|
| 09 / 09 | Threaded insert | 164 A 15729 X |
| 15 / 15 | Threaded insert | 164 A 15739 X |
| 25 / 25 | Threaded insert | 164 A 15749 X |
| 37 / 37 | Threaded insert | 164 A 15759 X |
| 09 / 09 | Front spacer | 164 A 15889 X |
| 15 / 15 | Front spacer | 164 A 15899 X |
| 25 / 25 | Front spacer | 164 A 15909 X |
| 37 / 37 | Front spacer | 164 A 15919 X |
| 09 / 09 | PCB clip / Threaded insert | 164 A 20529 X |
| 15 / 15 | PCB clip / Threaded insert | 164 A 20539 X |
| 25 / 25 | PCB clip / Threaded insert | 164 A 20549 X |
| 37 / 37 | PCB clip / Threaded insert | 164 A 20559 X |
| 09 / 09 | PCB clip / Front spacer | 164 A 19879 X |
| 15 / 15 | PCB clip / Front spacer | 164 A 19889 X |
| 25 / 25 | PCB clip / Front spacer | 164 A 19899 X |
| 37 / 37 | PCB clip / Front spacer | 164 A 19909 X |

PCB clip .122"/3.1 ± .004"/0.10 mm hole diameter and .063"/1.6 mm circuit board thickness