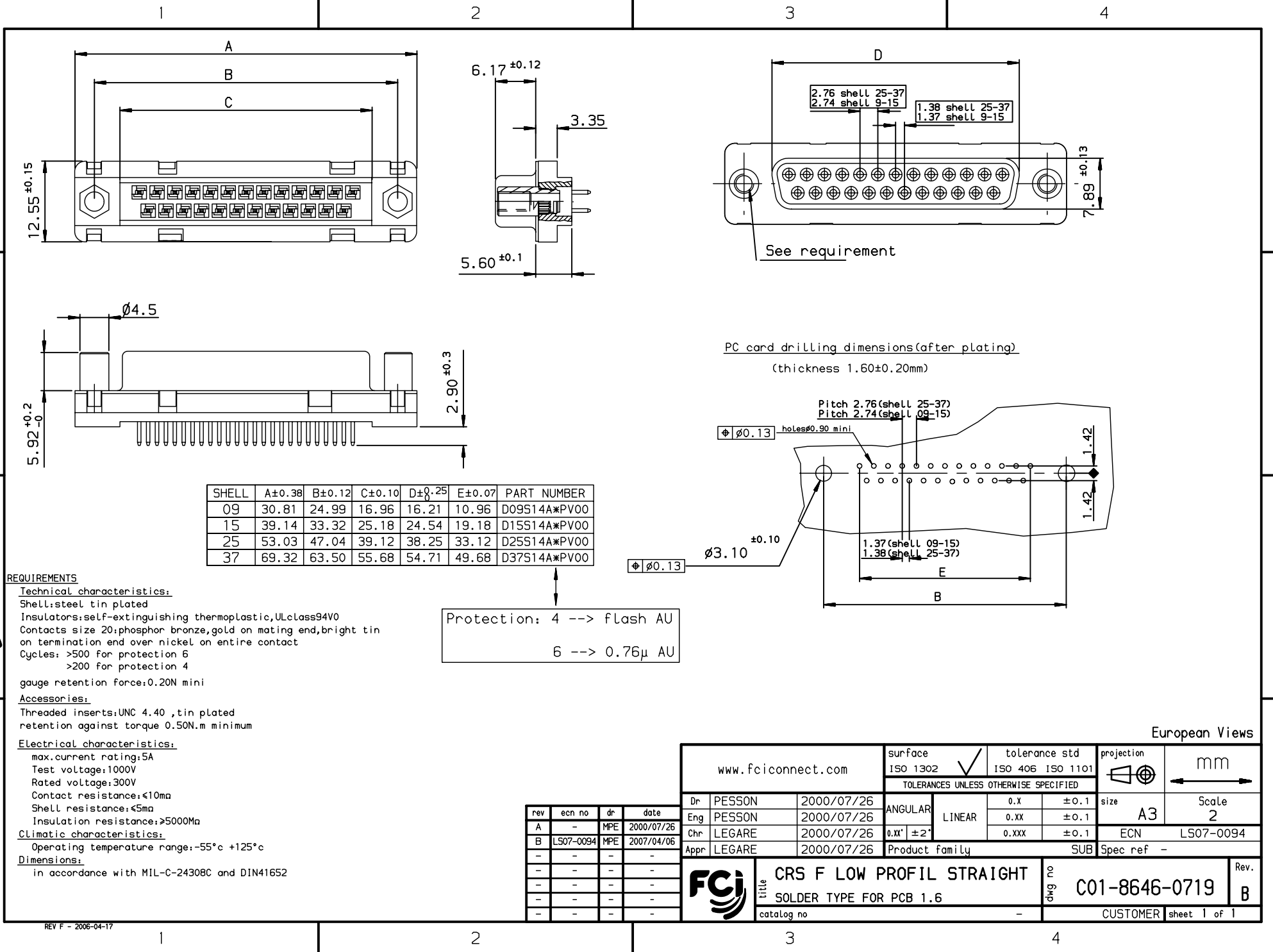


Copyright FCI, FCI



| SHELL | A±0.38 | B±0.12 | C±0.10 | D±0.25 | E±0.07 | PART NUMBER |
|-------|--------|--------|--------|--------|--------|--------------|
| 09 | 30.81 | 24.99 | 16.96 | 16.21 | 10.96 | D09S14A*PV00 |
| 15 | 39.14 | 33.32 | 25.18 | 24.54 | 19.18 | D15S14A*PV00 |
| 25 | 53.03 | 47.04 | 39.12 | 38.25 | 33.12 | D25S14A*PV00 |
| 37 | 69.32 | 63.50 | 55.68 | 54.71 | 49.68 | D37S14A*PV00 |

REQUIREMENTS

Technical characteristics:
 Shell: steel tin plated
 Insulators: self-extinguishing thermoplastic, UL class 94V0
 Contacts size 20: phosphor bronze, gold on mating end, bright tin on termination end over nickel on entire contact
 Cycles: >500 for protection 6
 >200 for protection 4

gauge retention force: 0.20N mini

Accessories:

Threaded inserts: UNC 4.40, tin plated
 retention against torque 0.50N.m minimum

Electrical characteristics:

max. current rating: 5A
 Test voltage: 1000V
 Rated voltage: 300V
 Contact resistance: <10ma
 Shell resistance: <5ma
 Insulation resistance: >5000Ma

Climatic characteristics:

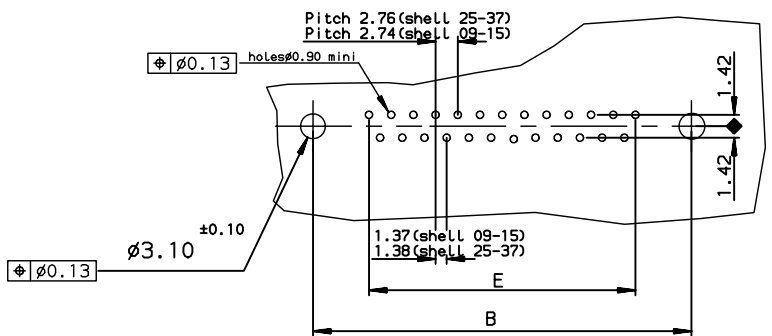
Operating temperature range: -55°C +125°C

Dimensions:

in accordance with MIL-C-24308C and DIN41652

Protection: 4 --> flash AU
 6 --> 0.76µ AU

PC card drilling dimensions (after plating)
 (thickness 1.60±0.20mm)



| rev | ecn no | dr | date |
|-----|-----------|-----|------------|
| A | - | MPE | 2000/07/26 |
| B | LS07-0094 | MPE | 2007/04/06 |
| - | - | - | - |
| - | - | - | - |
| - | - | - | - |
| - | - | - | - |

| | | | | | |
|---------------------------------------|--------|------------|------------------------------------|-----------------------------------|-------------------------|
| www.fciconnect.com | | | surface ISO 1302 ✓ | tolerance std ISO 406 ISO 1101 | projection mm |
| TOLERANCES UNLESS OTHERWISE SPECIFIED | | | | | |
| Dr | PESSON | 2000/07/26 | ANGULAR | 0.X | ±0.1 |
| Eng | PESSON | 2000/07/26 | | LINEAR | 0.XX |
| Chr | LEGARE | 2000/07/26 | 0.XX' ±2' | 0.XXX | ±0.1 |
| Appr | LEGARE | 2000/07/26 | | Product family | SUB |
| FCI | | | title CRS F LOW PROFIL STRAIGHT | | dwg no C01-8646-0719 |
| | | | SOLDER TYPE FOR PCB 1.6 | | |
| catalog no | | | CUSTOMER | | sheet 1 of 1 |

REV F - 2006-04-17