

Termination SMA

NEW!
ANNE-50X

50Ω DC to 20 GHz



CASE STYLE: LL561
CONNECTOR: SMA MALE

Features

- wideband coverage, DC to 20 GHz
- return loss, 40 dB typ. up to 4 GHz and 30 dB typ. 10 to 20 GHz
- rugged construction

Applications

- cellular communications
- satellite communications
- test set-up
- defense & radar

Electrical Specifications $T_{AMB}=25^{\circ}C$

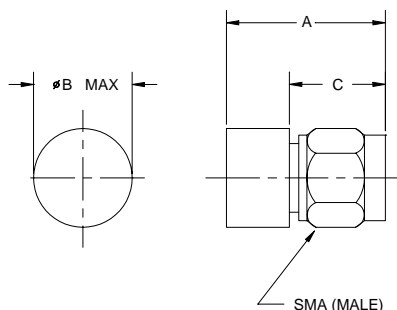
MODEL NO.	FREQUENCY (GHz) f_L - f_U	IMPEDANCE (OHMS)	RETURN LOSS (dB) Min.				POWER* RATING (W)	PRICE \$ Qty. (1-9)
			DC-8 GHz	8-12 GHz	12-18 GHz	18-20 GHz		
ANNE-50X	DC-20	50	30	26	24	22	1.0	13.95

*at 50°C, derate linearly to 350mW at 100°C

Maximum Ratings

Operating Temperature	-55°C to 100°C
Storage Temperature	-55°C to 100°C

Outline Drawing

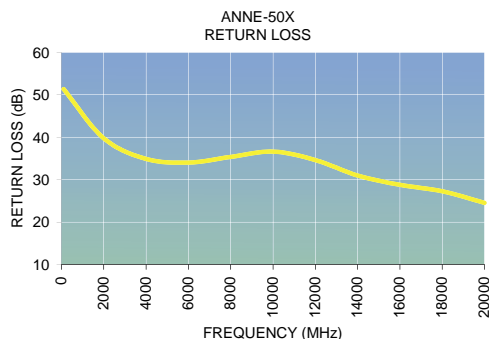


Outline Dimensions (inch/mm)

A	B	C	wt. grams
.58	.37	.35	4.0
14.73	9.40	8.89	

Typical Performance Data

Freq. (MHz)	Return Loss (dB)	
	Avg.	Sigma
100.00	51.34	6.32
2000.00	39.76	2.09
4000.00	34.90	1.61
6000.00	34.04	1.75
8000.00	35.38	2.46
10000.00	36.62	2.66
12000.00	34.63	3.39
14000.00	30.99	2.53
16000.00	28.79	2.66
18000.00	27.29	3.49
20000.00	24.54	3.54



Distribution Centers NORTH AMERICA 800-654-7949 • 417-335-5935 • Fax 417-335-5945 • EUROPE 44-1252-832600 • Fax 44-1252-837010

Mini-Circuits ISO 9001 & ISO 14001 Certified

INTERNET <http://www.minicircuits.com>

P.O. Box 350166, Brooklyn, New York 11235-0003 (718) 934-4500 Fax (718) 332-4661

REV. C
M95419
ED-11192A
ANNE-50X
TD/RS/CP
041116