

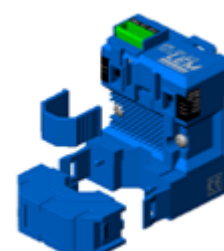
AC Current transducer APR-B420L

Split core transducer for the electronic measurement distorted AC waveforms current, with galvanic isolation between the primary (High power) and the secondary circuits (Electronic circuit). Switch selectable ranges and True RMS 4-20mA current output.



Preliminary

$I_{PN} = 10 \dots 400 \text{ A}$



Electrical data

Primary Nominal Current I_{PN} (A.t.RMS)	Analogue Output Signal I_{OUT} (mA)	Type
10,25,50	4-20	APR 50 B420L
50,75,100	4-20	APR 100 B420L
100,150,200	4-20	APR 200 B420L
200,300,400	4-20	APR 400 B420L

R_L	Load resistance	< 350	Ω
V_C	Supply voltage (loop powered)	+24	V DC
V_d	R.m.s. voltage for AC isolation test, 50/60Hz, 1 mn	5	kV
	Limitation of output current	< 25	mA

Accuracy-Dynamic performance data

X	Accuracy @ $I_{PN}, T_A = 25^\circ\text{C}$ (without offset)	< ± 1	% of I_{PN}
e_L	Linearity ($0 \dots \pm I_{PN}$)	< ± 0.5	% of I_{PN}
I_{OE}	Electrical offset current, $T_A = 25^\circ\text{C}$	4	mA
I_{OT}	Thermal drift of I_{OE}	± 1	$\mu\text{A/K}$
T_{ceG}	Thermal drift of the gain (% of reading)	± 0.1	%/K
t_r	Response time @ 90% of I_p	< 1000	ms
f	Frequency bandwidth (-3 dB)	10 .. 6000	Hz

General data

T_A	Ambient operating temperature	-20 .. +60	$^\circ\text{C}$
T_S	Ambient storage temperature	-20 .. +85	$^\circ\text{C}$
m	Mass	90	g
	Protection type	IP20	
	Reliable isolation according to EN50178, EN61010	300	V AC
	Creepage distance	> 5.5	mm
	EMC in accordance with EN50082-2		
	Plastic according to UL94V0, CTI 1		

Notes : Installation and maintenance should be done with power supply disconnected.

Features

- VFD and SCR waveforms current measurement
- True RMS output
- Split core type
- Loop powered 4-20mA current output
- DIN mounting & Panel mounting
- Eliminates insertion loss
- Switch selectable ranges

Advantages

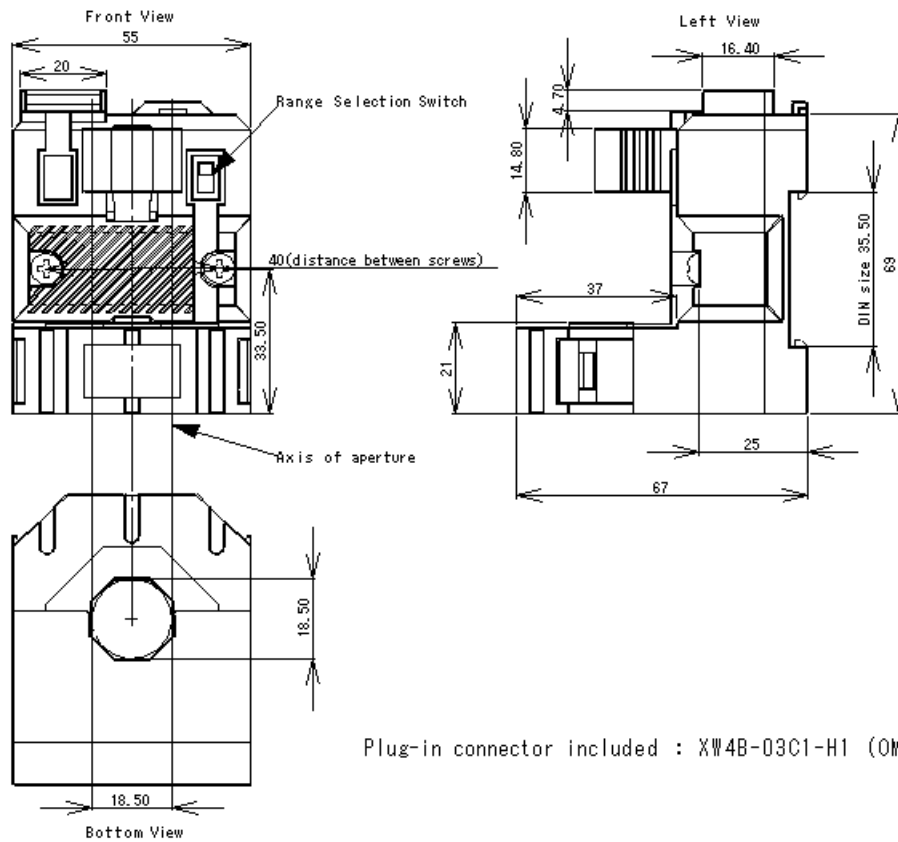
- Large aperture for cable up to $\varnothing 18\text{mm}$
- High isolation between primary and secondary circuits
- Easy to mount

Applications

- VFD Controlled Loads:
VFD output indicates how the motor and attached load are operating.
- SCR Controlled Loads:
Accurate measurement of phase angle fired or burst fired (time proportioned) SCRs. Current measurement gives faster response than temperature measurement.
- Switching Power Supplies and Electronic Ballasts:
True RMS sensing is the most accurate way to measure power supply or ballast input power.

Dimensions AP(R)-B420L

(unit : mm, 1mm = 0.0394 inch)



Plug-in connector included : XW4B-03C1-H1 (OMRON)

Mechanical characteristics

- General tolerance ± 1 mm
- Primary aperture $\varnothing 18.5$ mm
- Panel mounting 2 holes $\varnothing 4.0$ mm
- Distance between holes 40.0 mm

For panel mounting, replace M4 screws by new one (not supplied) with appropriate length to panel's thickness.

Connections

- Wires up to 2 mm \varnothing

